



# CHICAGO AVENUE STREETScape HONORING DR. PERCY L. JULIAN

SEPTEMBER 9, 2025

**SITE ASSESSMENT**

**EXISTING SITE FEATURES**



EXISTING BENCH



EXISTING RECEPTACLE



EXISTING PLANTER



EXISTING BIKE RACK

**EXISTING CONDITIONS**



EAST AVE.



HARVEY AVE.



LOMBARD AVE.



HUMPHREY AVE.



## COMMUNITY ENGAGEMENT SUMMARY

- TO GATHER FEEDBACK FROM THE COMMUNITY AND STAKEHOLDERS, THE PROJECT TEAM FACILITATED (5) IN-PERSON EVENTS, AN ONLINE SURVEY, AND AN OPEN HOUSE.
- THE COMMUNITY SHARED THEIR PREFERENCES IN REGARDS TO OPPORTUNITIES, AESTHETICS, AND DESIGN. THE TEAM GATHERED THIS INFORMATION THROUGH IMAGES AND WRITTEN QUESTIONS.
- USING THIS FEEDBACK, THREE CONCEPT “PILLARS” WERE CREATED – NARRATIVE, SITE DESIGN, AND BRANDING – TO REPRESENT DIFFERENT FACETS OF THE FINAL DESIGN.
- THE TEAM ALSO HAD AN IN-PERSON MEETING WITH FAITH JULIAN TO UNDERSTAND HER PREFERENCES ON HOW TO REPRESENT HER FATHER.



# FINAL CONCEPT DESIGN

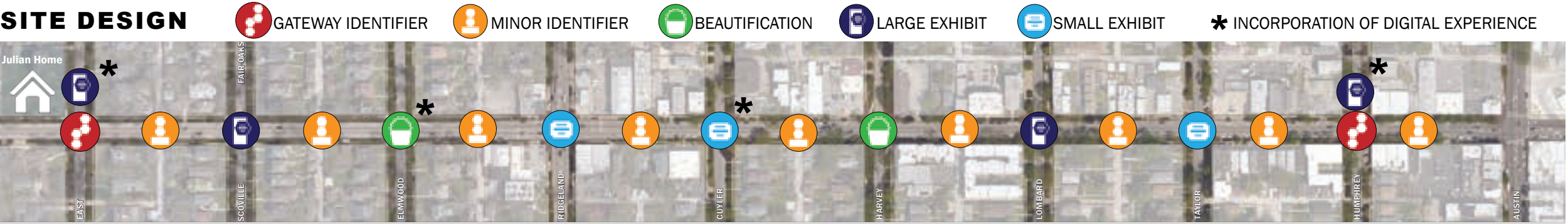
## BRANDING



## NARRATIVE



## SITE DESIGN



PROPOSED SITE PALETTE



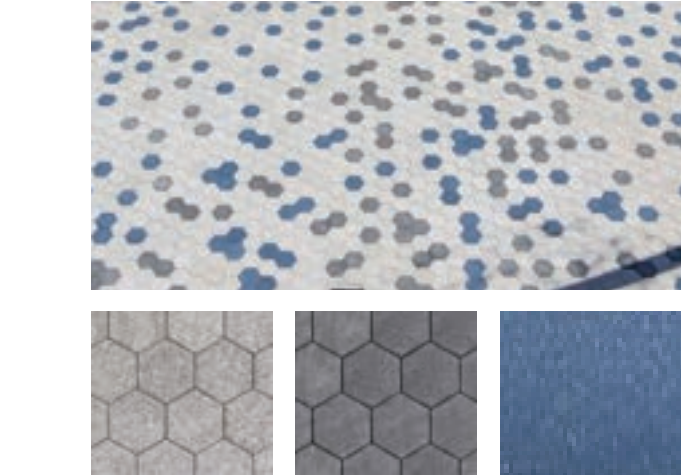
LANDSCAPEFORMS  
LAKESIDE BENCH



LANDSCAPEFORMS  
CENTRAL PARK RECEPTACLE



LANDSCAPEFORMS  
QUARTZ PLANTER



UNILOCK HEX PAVER



## GATEWAY



- 3-SIDED GATEWAY INCLUDING DECORATIVE HEXAGON SCULPTURES
- MATERIALS: FAUX WOOD STRUCTURE, CONCRETE BASE, TRANSPARENT POLYCARBONATE PANELS, POWDER-COATED KINETIC SCULPTURE
- SIZE: 12-FT HEIGHT, 3-FT X 3-FT BASE





## LARGE EXHIBIT



- 3-SIDED EXHIBIT, INCLUDING INFORMATIONAL PANELS AND ARTISTIC COLLAGE
- MATERIALS: FAUX WOOD STRUCTURE, CONCRETE BASE, POLYCARBONATE PANELS, POWDER-COATED KINETIC SCULPTURE
- SIZE: 12-FT HEIGHT, 3-FT X 3-FT BASE



But Julian's anger cooled—he was, Jarrett said, “steaming on racism, individuals”—and he soon chose avenues more befitting his stature. He started modestly, joining the fair-housing movement in Oak Park. But working on a larger canvas, leading a national fundraising campaign Legal Defense and Education Fund and giving interviews and speed-decried the plight of the Black man in America. “Branded, first,” Julian railed in one





**SMALL EXHIBIT**



- HORIZONTAL SIGNAGE
- MATERIALS: CORTEN STEEL WITH POLYCARBONATE INFORMATION PANEL
- SIZE: 6-FT WIDE X 3-FT TALL X 1.5-FT DEEP





## MINOR IDENTIFIERS



- SCULPTURAL PANELS WITH ZONE SIGNAGE
- MATERIALS: POLYCARBONATE SCULPTURE PANEL, POWDER-COATED ALUMINUM ZONE SIGN
- SIZE: 4-FT TALL X 6-FT WIDE





# MINOR IDENTIFIERS

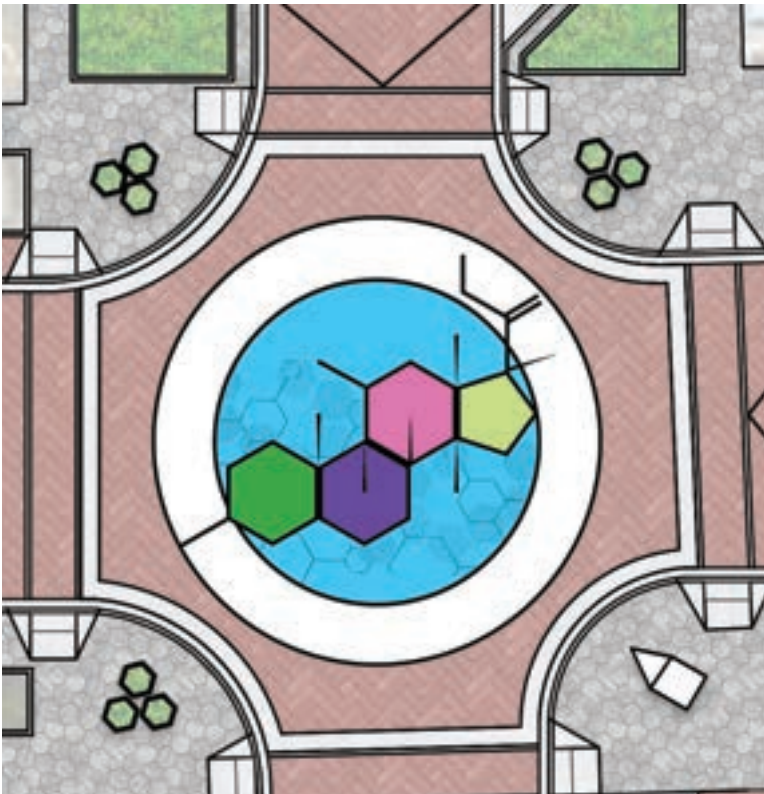


## PEDESTRIAN HORIZONTAL IDENTIFIER



- PAVEMENT INLAY
- MATERIALS: MOSAIC TILES
- SIZE: 4-FT X 4-FT

## VEHICULAR HORIZONTAL IDENTIFIER



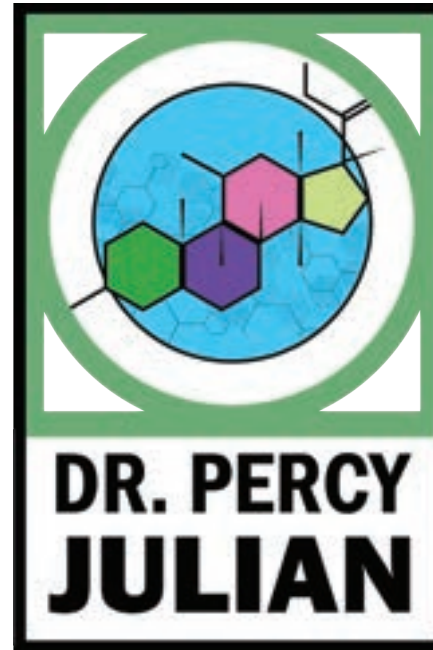
- ROADWAY MEDALLION
- MATERIALS: ACRYLIC PAVEMENT COATING AND UNIT PAVERS
- SIZE: 50-FT X 50-FT



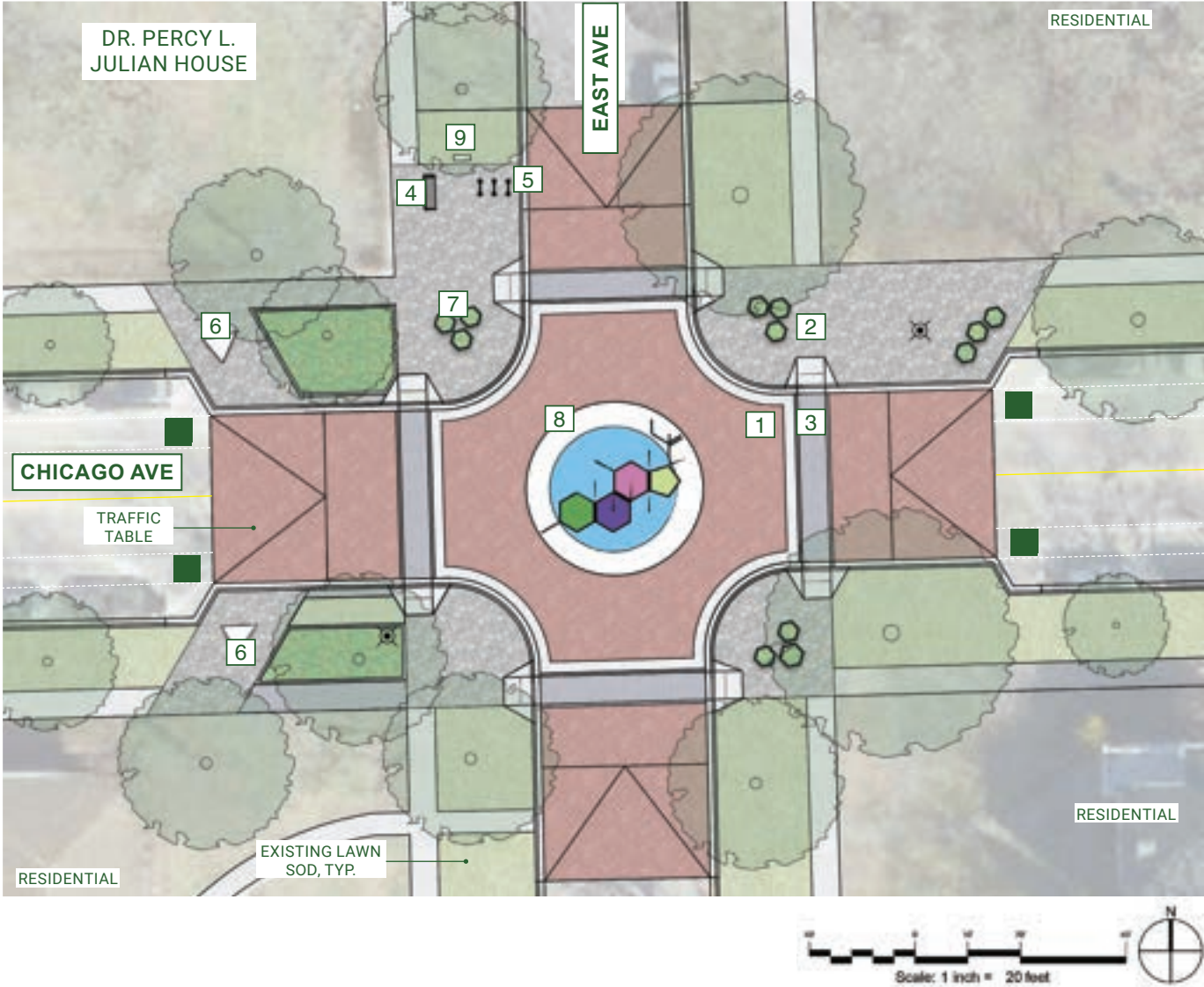
## MINOR IDENTIFIERS



- LIGHT POLE IDENTIFIER
- MATERIALS: PAINTED ALUMINUM WITH MOUNTING BRACKETS
- SIZE: 3-FT TALL X 2-FT WIDE



# INTERSECTION ENLARGEMENT: EAST AVENUE



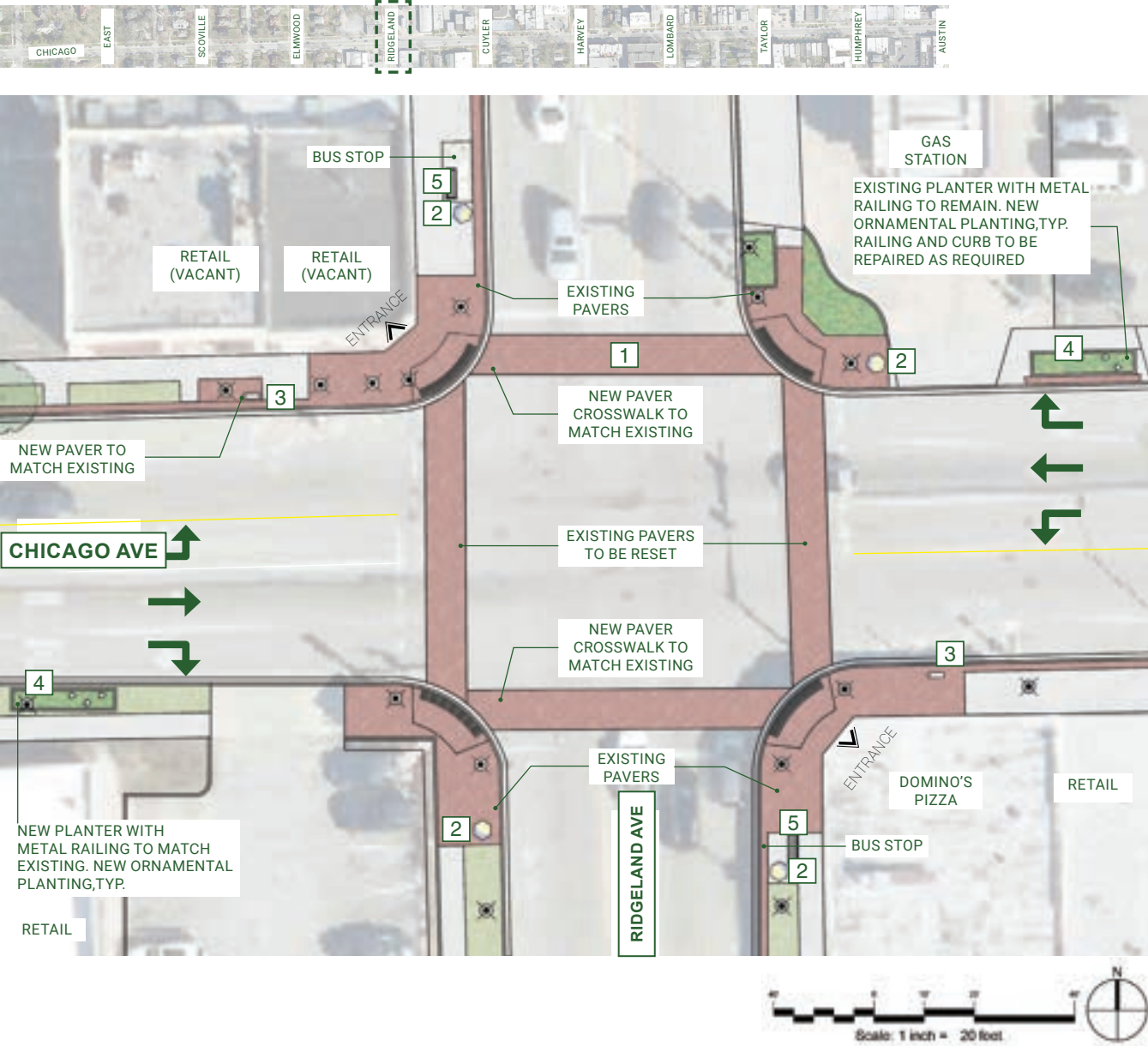
## LEGEND

- 1 PAVEMENT, TYPE 1, CLAY PAVERS RED COLOR
- 2 PAVEMENT, TYPE 2, UNILOCK HEX PAVER
- 3 PAVEMENT, TYPE 3, CLAY PAVERS BLUE COLOR
- 4 BENCH
- 5 BICYCLE RACKS
- 6 LARGE EXHIBIT
- 7 PLANTERS WITH OPPORTUNITIES FOR INSCRIPTIONS OR ICONOGRAPHY
- 8 CENTRAL MEDALLION IN PAVEMENT
- 9 SMALL EXHIBIT

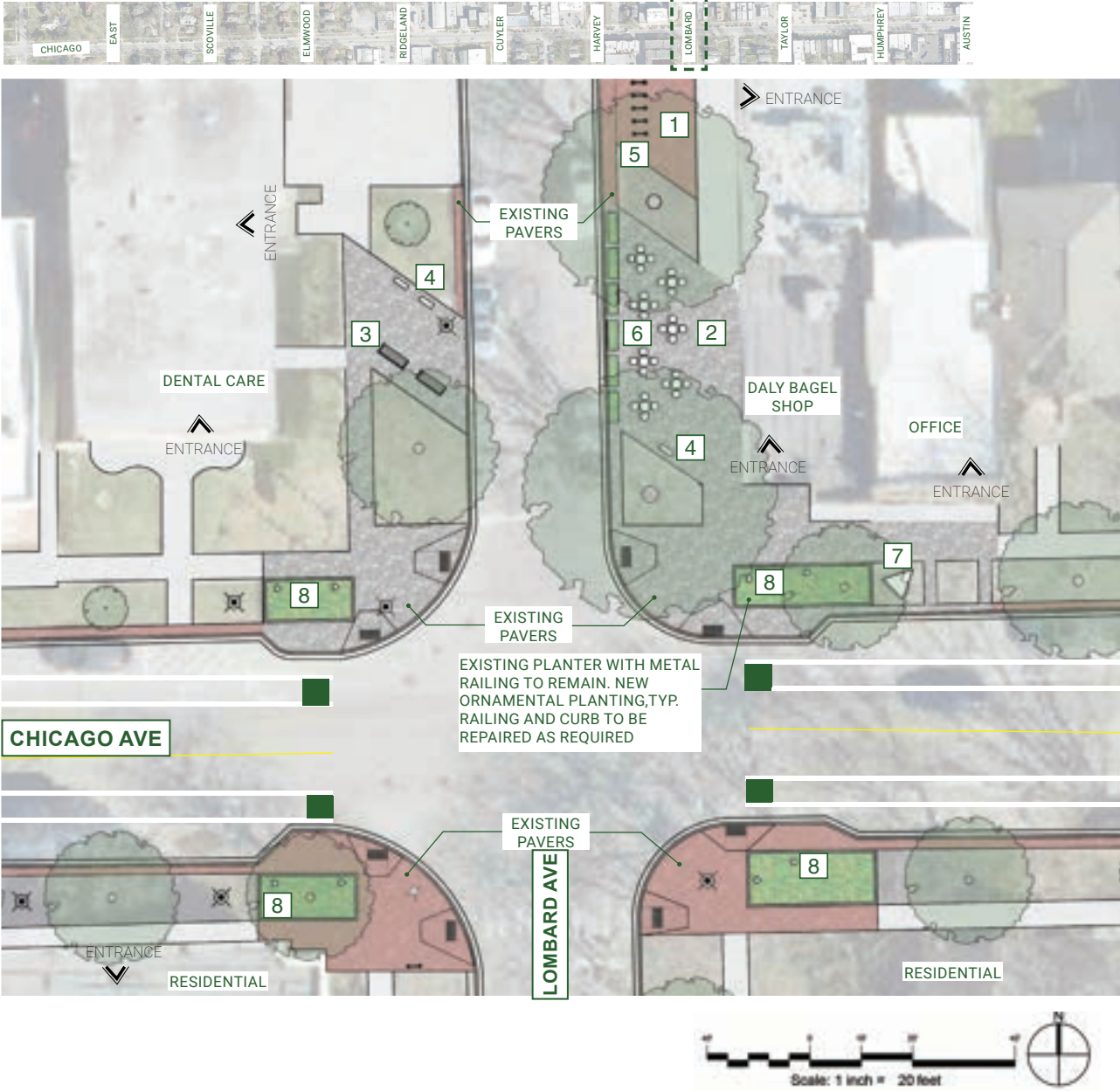




# INTERSECTION ENLARGEMENT: RIDGELAND AVENUE



# INTERSECTION ENLARGEMENT: LOMBARD AVENUE



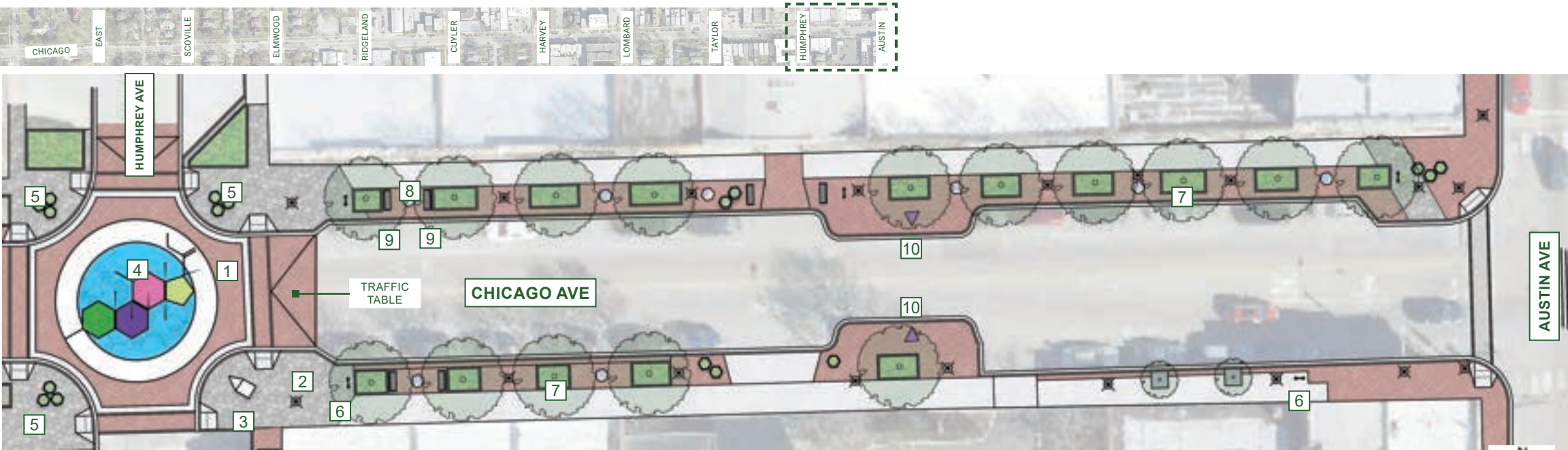
## LEGEND

- 1 PAVEMENT, TYPE 1, CLAY PAVERS RED COLOR
- 2 PAVEMENT, TYPE 2, UNILOCK HEX PAVER
- 3 BENCH
- 4 SMALL EXHIBIT
- 5 BICYCLE RACKS
- 6 OUTDOOR DINING AREA
- 7 LARGE EXHIBIT
- 8 MINOR IDENTIFIER - VERTICAL



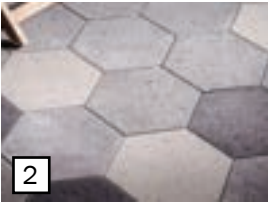


# INTERSECTION ENLARGEMENT: HUMPHREY AVENUE



## LEGEND

- 1 PAVEMENT, TYPE 1, CLAY PAVERS RED COLOR
- 2 PAVEMENT, TYPE 2, UNILOCK HEX PAVER
- 3 EXISTING ART SCULPTURE
- 4 CENTRAL MEDALLION IN PAVEMENT
- 5 PLANTERS WITH OPPORTUNITIES FOR INSCRIPTION OR ICONOGRAPHY
- 6 BICYCLE RACKS
- 7 MINOR IDENTIFIER - VERTICAL
- 8 MINOR IDENTIFIER - HORIZONTAL
- 9 BENCH
- 10 GATEWAY - MODIFIED LARGE EXHIBIT





## AUGMENTED REALITY OPPORTUNITY: NAVIGATIONAL



- INFORMATION ENCOURAGES USERS TO EXPLORE THE CORRIDOR AND GREATER OAK PARK
- HIGHLIGHTS AVAILABLE BOTH PHYSICAL AND DIGITAL EXHIBITS ALONG THE CORRIDOR



## AUGMENTED REALITY OPPORTUNITY: IMMERSIVE



- DIGITAL ART EXHIBITS RELATED TO DR. JULIAN VIEWED THROUGH MOBILE DEVICE
- CAN SUPPORT NEARBY EXHIBITS
- OPPORTUNITY FOR COMMUNITY OR LOCAL ARTIST TO EXPRESS THEMSELVES



## AUGMENTED REALITY OPPORTUNITY: INFORMATIONAL



- ALLOWS VISITORS TO SEE MULTI-MEDIA INFORMATION NOT SHOWN ON SIGNAGE THROUGH THEIR DEVICES
- PLANNED EXHIBIT ROTATION TO COVER MORE TOPICS
- ACCESSIBILITY FEATURES SUCH AS AUDIO DESCRIPTIONS FOR VISUALLY / HEARING IMPAIRED



# THANK YOU



CHICAGO AVENUE STREETSCAPE  
SEPTEMBER 9, 2025

