

Village of Oak Park
Fleet Replacement Fund
2024 - 2028

Project:

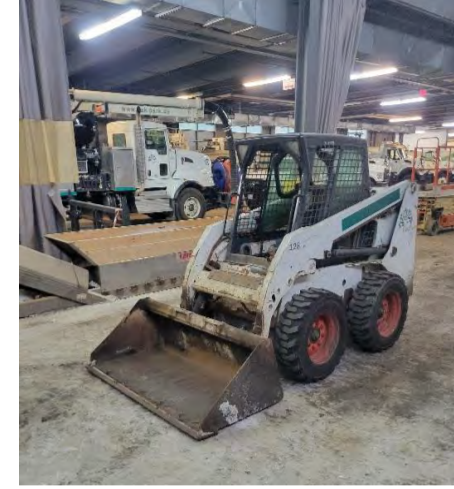
Public Works Vehicle Replacement

General Priority Code: A

Climate Priority Code: High

General Category: Machinery and Equipment

Climate Impact Areas(s): Transportation; Community Health & Environmental Quality; Parks, Plants & Biodiversity



Description:

Replacement or rebuilding of Public Works Department vehicles. This category does not include Public Works vehicles assigned to the Water & Sewer Division or Environmental Services Division.

Justification:

Equipment and vehicles that are past their cost effective lives and have exceeded the evaluation criteria for retention are a financial burden on the Village of Oak Park. The Department is proposing to rebuild vehicles, where cost effective, and wear has not been detrimental to the chassis or engine. As more services are being brought in house equipment will be used more than in the past. Newer equipment will help keep downtime to a minimum. Staff will evaluate the feasibility and opportunity to transition to full electric vehicles for every purchase. Staff will present the Board with the possible option and cost in alignment with the Village Climate Ready Oak Park Plan Goal: TS01 - Reduce Vehicle Emissions.

Current Status:

Replacement Schedule:

2024 - 2008 P/U w/plow (\$65,000), Three Updated spreader boxes for tandem axle trucks (\$55,000 each), **2002 Asphalt truck (\$300,000)**, 2005 Small loader (\$90,000).
2025- 2016&2017 Five Admin vehicles (\$38,000 each), 2005 Single axle dump truck w/chipper box w/plow, (\$200,000), 2005 Front end loader (\$350,000), 2005 Tandem axle dump truck w/plow (\$250,000), 1982 Air compressor trailer (\$30,000), Snow melter trailer (\$100,000 from PW \$100,000 from Parking Services)
2026 - 2002 Semi Road Tractor (\$300,000), 2016 P/U w/Plow (\$70,000), 2005 Small loader (\$95,000), 2005 Front End Loader (\$350,000)
2027 - 2016&2017 Two Admin vehicles (\$40,000 each), 2003 Service truck (\$80,000), 2000 Large Aerial truck (\$350,000), 2005 Tree stumper (\$70,000), 2016 One ton truck w/plow (\$170,000), 2016 Multi purpose tractor (\$100,000), 2015&2012 P/U w/plow (\$70,000 each), 1999 Portable air compressor (\$35,000)
2028 - 2000 Passenger van (\$60,000), Two 2016 P/U w/plow (\$70,000 each), Two Tandem Axle Dump trucks w/salter/plow (\$300,000 each), 2017 One ton truck w/plow (\$175,000)

Funding Sources	Account Number	Actuals		Budget		Year End		Recommended Budget			
		FY 2021	FY 2022	FY 2023	FY 2023	Estimate	FY 2024	FY 2025	FY 2026	FY 2027	FY 2028
Interfund Transfer CIP #3095	3032.41300.101.491495	-	454,000	896,841	1,072,841	770,000	620,000	1,120,000	815,000	1,025,000	975,000
Parking Operating Revenues	Various	-	-	-	-	-	-	100,000	-	-	-
Total:		-	454,000	896,841	1,072,841	770,000	620,000	1,220,000	815,000	1,025,000	975,000
Expenditures											
Vehicle Purchase	3032.43900.858.570750	-	252,462	896,841	1,072,841	770,000	620,000	1,120,000	815,000	1,025,000	975,000
Vehicle Replacement	5060.43770.786.570750	-	-	-	-	-	-	100,000	-	-	-
Total:		-	252,462	896,841	1,072,841	770,000	620,000	1,220,000	815,000	1,025,000	975,000



NASPO PRICE QUOTE

No. 12132023-334

2600 W SALZBURG
FREELAND, MI 48623
Phone: (989) 495 – 9332
Fax: (989) 495 – 9342

Requested By: Midwest – Oak Park
Village of Oak Park
201 South Boulevard
Oak Park, IL 60302

Quote Date	Quote Good Through	Freight Terms	Requested By	Payment Terms
02/14/2024	02/29/2024	FOB Midland, MI	MPE	Net 30 Days

Qty	Item No	Description	Price
1		<p>8TTRK 8 TON Patch Truck Diesel Fired Dual Burner unit. Hydraulic loading and unloading doors Battery charger package Smart Control package including: voltmeter, VIP, 7-day timer, temperature gauge, hour meter, and diagnostic package. Dumping frame Onboard hydraulics - utilizing existing PTO Shovel apron Skirting kit and bumper Hopper access platform Platform railings Ladder - 2 step Tool box - lane side Pylon holders Tool holders Federal Signal lighting kit, including: stop/tail/turn/reverse, markers, arrow board, work lights for hopper, platform and rear of machine, and beacon. Additional loading door lever near truck cab Backup camera Fire extinguisher DOT reflective tape DOT compliance kit: flare, triangles, etc. Mounted on chassis</p>	\$150,094.00
		<p>Discount NASPO CONTRACT</p>	-\$15,009.00

Paint Color Falcon Red	Included
Warranty Two Year Factory	Included
Falcon CCMFG 5 Year Combustion Chamber Maintenance Free Guaranty	Included
Manual Operator, Parts and Service Manual (Electronic)	Included
Training On-site Operation and Service Training	Included
Options	
0037 50-Gallon Heated/Insulated Tack Tank w/ Dedicated Burner - Gravity Feed Withdrawal Via Molasses Valve at the Bottom of the Tank (Same Burner Type as Hopper Burner(s) and For Water Based Tack or Rejuvenator Only)	\$9,072.00
0080 Spray System - Viking HL32 Pump, 10- Gallon Flush Tank and Spray Wand w/ 1/2" Hoses (For Water Based Tack or Rejuvenator Only and Requires Heated Tack Tank Option)	\$5,860.00
NJP0099g Electric wash down system with hose reel	\$2,246.00
NJP1099B Spoils Bin mounted on frame Curb Side	\$1,218.00
Discount NASPO CONTRACT	-\$1,840.00
Freight Oak Park, IL to Freeland, MI Round trip	\$1,350.00
PDI, TRAINING	\$2,700.00
M2 106 Plus Freightliner with 40,000# Tandem Rear Axle Per Emailed Spec labeled FalconMY2025 Oak Park	\$111,833.00
Plus Applicable Sales Tax	

Why Falcon?

It's Versatile

- Recycle leftover asphalt, chunks and millings (a dual burner unit is required to recycle millings)
- Transport asphalt and keep it hot all day and hold it overnight
- Heat and re-heat cold patch

It's Cost-Effective

- When used as a hot box, it eliminates asphalt waste that occurs in the back of an unheated truck bed
- When used as a recycler, it recycles leftover asphalt and asphalt chunks torn up from the pavement
- Independently certified 92% fuel efficiency – uses less than 3 gallons of fuel per 8-hour shift

It's Reliable

- VIP Technology (patent pending) – Protects burner components by automatically preventing burner from operating with low battery voltage
- A Falcon is designed to allow the burner to run while in tow - preventing material from cooling while being transported
- Heat management system is engineered to provide even hopper temperatures – eliminating material scorching from hot spots and material hardening from cold spots
- Standard 2-year machine warranty and lifetime frame warranty

It's a Falcon

Truck Chassis Availability is Q4 2024

Completed Truck Patcher delivery is Q1 2025

Order must be placed no later than February 29,2024

SUBTOTAL
TAX
TOTAL

\$267,524.00
\$0.00
\$267,524.00

Accepted By

Accepted Date

Prepared for:
Ric Simon
FALCON ASPHALT REPAIR
EQUIPMENT
2600 W Salzburg Road
Freeland, MI 48623
Phone: 989-495-9332

Prepared by:
Mike Denno
D & K TRUCK COMPANY
3020 Snow Rd
LANSING, MI 48917
Phone: 517-449-2329
Mobile:
E-Mail: mdenno@dktruck.com

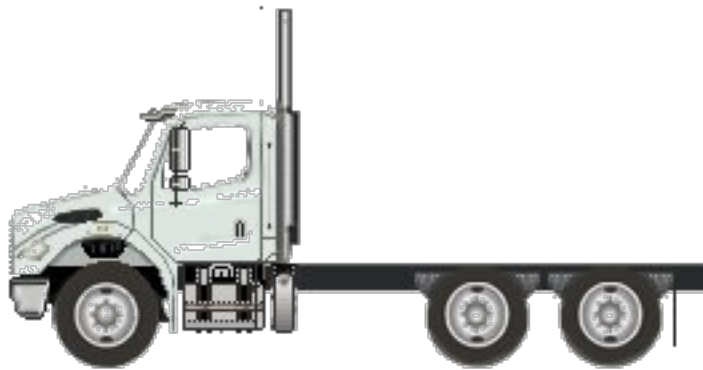
A proposal for



Prepared by
D & K TRUCK COMPANY
Mike Denno

Feb 06, 2024

Freightliner M2 106 Plus



Components shown may not reflect all spec'd options and are not to scale

Prepared for:
 Ric Simon
 FALCON ASPHALT REPAIR
 EQUIPMENT
 2600 W Salzburg Road
 Freeland, MI 48623
 Phone: 989-495-9332

Prepared by:
 Mike Denno
 D & K TRUCK COMPANY
 3020 Snow Rd
 LANSING, MI 48917
 Phone: 517-449-2329
 Mobile:
 E-Mail: mdenno@dktruck.com

S P E C I F I C A T I O N P R O P O S A L

Data Code	Description	Weight Front	Weight Rear	Retail Price
Price Level				
PRL-28M	M2 PRL-28M (EFF:MY25 ORDERS)			STD
Data Version				
DRL-028	SPECPRO21 DATA RELEASE VER 028			N/C
Vehicle Configuration				
001-172	M2 106 PLUS CONVENTIONAL CHASSIS	5,709	3,450	\$114,401.00
004-225	2025 MODEL YEAR SPECIFIED			STD
002-004	SET BACK AXLE - TRUCK			STD
019-004	STRAIGHT TRUCK PROVISION, NON-TOWING			STD
003-001	LH PRIMARY STEERING LOCATION			STD
General Service				
AA1-002	TRUCK CONFIGURATION			STD
AA6-002	DOMICILED, USA (EXCLUDING CALIFORNIA AND CARB OPT-IN STATES)			N/C
99D-027	EPA EMISSIONS CERTIFICATION FOR REGISTRATION OUTSIDE CARB STATES - EPA CLEAN IDLE (INCLUDES 6X4 INCH LABEL ON LOWER FORWARD OF DRIVER DOOR)			N/C
AF2-998	NONE			N/C
A85-011	CONSTRUCTION SERVICE			N/C
A84-1RO	ROAD AND HIGHWAY MAINTENANCE BUSINESS SEGMENT			N/C
AA4-013	MOIST BULK COMMODITY			N/C
AA5-002	TERRAIN/DUTY: 100% (ALL) OF THE TIME, IN TRANSIT, IS SPENT ON PAVED ROADS			STD
AB1-008	MAXIMUM 8% EXPECTED GRADE			STD
AB5-001	SMOOTH CONCRETE OR ASPHALT PAVEMENT - MOST SEVERE IN-TRANSIT (BETWEEN SITES) ROAD SURFACE			STD
995-091	MEDIUM TRUCK WARRANTY			STD
A66-99D	EXPECTED FRONT AXLE(S) LOAD : 13220.0 lbs			



Prepared for:
 Ric Simon
 FALCON ASPHALT REPAIR
 EQUIPMENT
 2600 W Salzburg Road
 Freeland, MI 48623
 Phone: 989-495-9332

Prepared by:
 Mike Denno
 D & K TRUCK COMPANY
 3020 Snow Rd
 LANSING, MI 48917
 Phone: 517-449-2329
 Mobile:
 E-Mail: mdenno@dktruck.com

Data Code	Description	Weight Front	Weight Rear	Retail Price
A68-99D	EXPECTED REAR DRIVE AXLE(S) LOAD : 40000.0 lbs			
A63-99D	EXPECTED GROSS VEHICLE WEIGHT CAPACITY : 53220.0 lbs			

Truck Service

AA3-005	FLATBED/PLATFORM/STAKE BODY			N/C
AF3-999	FALCON ASPHALT REPAIR EQUIPMENT			N/C
AF7-99D	EXPECTED BODY/PAYLOAD CG HEIGHT ABOVE FRAME "XX" INCHES : 32.0 in			

Engine

101-3BR	CUM L9 360 HP @ 2200 RPM; 2200 GOV RPM, 1150 LB-FT @ 1200 RPM	640	30	\$16,665.00
---------	--	-----	----	-------------

Electronic Parameters

79A-065	65 MPH ROAD SPEED LIMIT			N/C
79B-013	CRUISE CONTROL SPEED LIMIT 5 MPH LOWER THAN ROAD SPEED LIMIT			N/C
79W-024	CRUISE CONTROL BUTTON PTO CONTROL			N/C
79X-003	PTO SPEED 1 SETTING - 800 RPM			N/C
80G-002	PTO MINIMUM RPM - 700			N/C
80J-002	REGEN INHIBIT SPEED THRESHOLD - 5 MPH			N/C
80S-003	PTO 1, DASH SWITCH, ENGAGE BEFORE DRIVING			N/C

Engine Equipment

99C-024	EPA 2010/GHG 2024 CONFIGURATION			STD
13E-001	STANDARD OIL PAN			STD
105-001	ENGINE MOUNTED OIL CHECK AND FILL			STD
014-099	SIDE OF HOOD AIR INTAKE WITH FIREWALL MOUNTED DONALDSON AIR CLEANER			STD
124-1D7	DR 12V 160 AMP 28-SI QUADRAMOUNT PAD ALTERNATOR WITH REMOTE BATTERY VOLT SENSE			STD
292-235	(2) DTNA GENUINE, FLOODED STARTING, MIN 2000CCA, 370RC, THREADED STUD BATTERIES	10		\$13.00
290-017	BATTERY BOX FRAME MOUNTED			STD
281-001	STANDARD BATTERY JUMPERS			STD
282-001	SINGLE BATTERY BOX FRAME MOUNTED LH SIDE UNDER CAB			STD
291-017	WIRE GROUND RETURN FOR BATTERY CABLES WITH ADDITIONAL FRAME GROUND RETURN			STD



Prepared for:
 Ric Simon
 FALCON ASPHALT REPAIR
 EQUIPMENT
 2600 W Salzburg Road
 Freeland, MI 48623
 Phone: 989-495-9332

Prepared by:
 Mike Denno
 D & K TRUCK COMPANY
 3020 Snow Rd
 LANSING, MI 48917
 Phone: 517-449-2329
 Mobile:
 E-Mail: mdenno@dktruck.com

Data Code	Description	Weight Front	Weight Rear	Retail Price
289-001	NON-POLISHED BATTERY BOX COVER			STD
293-058	POSITIVE LOAD DISCONNECT WITH CAB MOUNTED CONTROL SWITCH MOUNTED OUTBOARD DRIVER SEAT	2		\$206.00
295-029	POSITIVE AND NEGATIVE POSTS FOR JUMPSTART LOCATED ON FRAME NEXT TO STARTER	2		\$88.00
306-015	PROGRESSIVE LOW VOLTAGE DISCONNECT AT 12.3 VOLTS FOR DESIGNATED CIRCUITS			STD
107-032	CUMMINS TURBOCHARGED 18.7 CFM AIR COMPRESSOR WITH INTERNAL SAFETY VALVE			STD
108-002	STANDARD MECHANICAL AIR COMPRESSOR GOVERNOR			STD
131-013	AIR COMPRESSOR DISCHARGE LINE			STD
152-041	ELECTRONIC ENGINE INTEGRAL SHUTDOWN PROTECTION SYSTEM			STD
128-076	CUMMINS ENGINE INTEGRAL BRAKE WITH VARIABLE GEOMETRY TURBO ON/OFF	20		STD
016-1C2	RH OUTBOARD UNDER STEP MOUNTED HORIZONTAL AFTERTREATMENT SYSTEM ASSEMBLY WITH RH B-PILLAR MOUNTED VERTICAL TAILPIPE	30	25	\$823.00
28F-014	ENGINE AFTERTREATMENT DEVICE, AUTOMATIC OVER THE ROAD REGENERATION AND VIRTUAL REGENERATION REQUEST SWITCH IN CLUSTER			STD
239-020	10 FOOT 00 INCH (120 INCH+0/-5.9 INCH) EXHAUST SYSTEM HEIGHT			N/C
237-1CR	RH CURVED VERTICAL TAILPIPE B-PILLAR MOUNTED ROUTED FROM STEP			N/C
23U-001	6 GALLON DIESEL EXHAUST FLUID TANK			STD
30N-003	100 PERCENT DIESEL EXHAUST FLUID FILL			STD
43X-002	LH MEDIUM DUTY STANDARD DIESEL EXHAUST FLUID TANK LOCATION			STD
23Y-001	STANDARD DIESEL EXHAUST FLUID PUMP MOUNTING			STD
43Y-001	STANDARD DIESEL EXHAUST FLUID TANK CAP			STD
242-011	ALUMINUM AFTERTREATMENT DEVICE/MUFFLER/TAILOPIPE SHIELD(S)			N/C
273-058	AIR POWERED ON/OFF ENGINE FAN CLUTCH			STD
276-001	AUTOMATIC FAN CONTROL WITHOUT DASH SWITCH, NON ENGINE MOUNTED			STD
110-003	CUMMINS SPIN ON FUEL FILTER			STD
118-008	COMBINATION FULL FLOW/BYPASS OIL FILTER			N/C



Prepared for:
 Ric Simon
 FALCON ASPHALT REPAIR
 EQUIPMENT
 2600 W Salzburg Road
 Freeland, MI 48623
 Phone: 989-495-9332

Prepared by:
 Mike Denno
 D & K TRUCK COMPANY
 3020 Snow Rd
 LANSING, MI 48917
 Phone: 517-449-2329
 Mobile:
 E-Mail: mdenno@dktruck.com

Data Code	Description	Weight Front	Weight Rear	Retail Price
266-101	900 SQUARE INCH ALUMINUM RADIATOR	15		N/C
103-039	ANTIFREEZE TO -34F, OAT (NITRITE AND SILICATE FREE) EXTENDED LIFE COOLANT			STD
171-007	GATES BLUE STRIPE COOLANT HOSES OR EQUIVALENT			STD
172-001	CONSTANT TENSION HOSE CLAMPS FOR COOLANT HOSES			STD
270-016	RADIATOR DRAIN VALVE			STD
168-002	LOWER RADIATOR GUARD			STD
138-011	PHILLIPS-TEMRO 1000 WATT/115 VOLT BLOCK HEATER	4		\$92.00
140-022	CHROME ENGINE HEATER RECEPTACLE MOUNTED UNDER LH DOOR			\$6.00
134-001	ALUMINUM FLYWHEEL HOUSING			STD
132-004	ELECTRIC GRID AIR INTAKE WARMER			STD
155-058	DELCO 12V 38MT HD STARTER WITH INTEGRATED MAGNETIC SWITCH			N/C

Transmission

342-582	ALLISON 3000 RDS AUTOMATIC TRANSMISSION WITH PTO PROVISION	200	60	\$6,785.00
---------	--	-----	----	------------

Transmission Equipment

343-339	ALLISON VOCATIONAL PACKAGE 223 - AVAILABLE ON 3000/4000 PRODUCT FAMILIES WITH VOCATIONAL MODELS RDS, HS, MH AND TRV			N/C
84B-012	ALLISON VOCATIONAL RATING FOR ON/OFF HIGHWAY APPLICATIONS AVAILABLE WITH ALL PRODUCT FAMILIES			N/C
84C-023	PRIMARY MODE GEARS, LOWEST GEAR 1, START GEAR 1, HIGHEST GEAR 6, AVAILABLE FOR 3000/4000 PRODUCT FAMILIES ONLY			N/C
84D-023	SECONDARY MODE GEARS, LOWEST GEAR 1, START GEAR 1, HIGHEST GEAR 6, AVAILABLE FOR 3000/4000 PRODUCT FAMILIES ONLY			N/C
84E-017	S5 PERFORMANCE LIMITING PRIMARY SHIFT SCHEDULE, AVAILABLE FOR 3000/4000 PRODUCT FAMILIES ONLY			N/C
84F-016	S5 PERFORMANCE LIMITING SECONDARY SHIFT SCHEDULE, AVAILABLE FOR 3000/4000 PRODUCT FAMILIES ONLY			N/C
84G-014	2200 RPM PRIMARY MODE SHIFT SPEED			N/C
84H-014	2200 RPM SECONDARY MODE SHIFT SPEED			N/C



Prepared for:
 Ric Simon
 FALCON ASPHALT REPAIR
 EQUIPMENT
 2600 W Salzburg Road
 Freeland, MI 48623
 Phone: 989-495-9332

Prepared by:
 Mike Denno
 D & K TRUCK COMPANY
 3020 Snow Rd
 LANSING, MI 48917
 Phone: 517-449-2329
 Mobile:
 E-Mail: mdenno@dktruck.com

Data Code	Description	Weight Front	Weight Rear	Retail Price
84J-000	ENGINE BRAKE RANGE PRESELECT RECOMMENDED BY DTNA AND ALLISON, THIS DEFINED BY ENGINE AND VOCATIONAL USAGE			STD
84K-000	ENGINE BRAKE RANGE ALTERNATE PRESELECT RECOMMENDED BY DTNA AND ALLISON, THIS DEFINED BY ENGINE AND VOCATIONAL USAGE			STD
84N-200	FUEL SENSE 2.0 DISABLED - PERFORMANCE - TABLE BASED			STD
84U-000	DRIVER SWITCH INPUT - DEFAULT - NO SWITCHES			STD
353-073	QUICKFIT BODY LIGHTING CONNECTOR UNDER CAB, WITH CAP			\$125.00
362-823	CUSTOMER INSTALLED CHELSEA 280 SERIES PTO			N/C
363-001	PTO MOUNTING, LH SIDE OF MAIN TRANSMISSION ALLISON			N/C
341-018	MAGNETIC PLUGS, ENGINE DRAIN, TRANSMISSION DRAIN, AXLE(S) FILL AND DRAIN			STD
345-078	HEAVY DUTY ELECTRONIC TRANSMISSION SHIFT CONTROL, COLUMN MOUNTED			N/C
97G-004	TRANSMISSION PROGNOSTICS - ENABLED 2013			N/C
370-015	WATER TO OIL TRANSMISSION COOLER, IN RADIATOR END TANK			STD
346-003	TRANSMISSION OIL CHECK AND FILL WITH ELECTRONIC OIL LEVEL CHECK			N/C
35T-001	SYNTHETIC TRANSMISSION FLUID (TES-295 COMPLIANT)			STD

Front Axle and Equipment

400-1A7	DETROIT DA-F-13.3-3 13,300# FF1 71.5 KPI/3.74 DROP SINGLE FRONT AXLE			\$253.00
402-020	MERITOR 15X4 Q+ CAM FRONT BRAKES			STD
403-002	NON-ASBESTOS FRONT BRAKE LINING			STD
419-023	CONMET CAST IRON FRONT BRAKE DRUMS			(\$12.00)
427-001	FRONT BRAKE DUST SHIELDS	5		\$49.00
409-006	FRONT OIL SEALS			STD
408-001	VENTED FRONT HUB CAPS WITH WINDOW, CENTER AND SIDE PLUGS - OIL			STD
416-022	STANDARD SPINDLE NUTS FOR ALL AXLES			STD
405-002	MERITOR AUTOMATIC FRONT SLACK ADJUSTERS			STD
536-050	TRW THP-60 POWER STEERING			STD



Prepared for:
 Ric Simon
 FALCON ASPHALT REPAIR
 EQUIPMENT
 2600 W Salzburg Road
 Freeland, MI 48623
 Phone: 989-495-9332

Prepared by:
 Mike Denno
 D & K TRUCK COMPANY
 3020 Snow Rd
 LANSING, MI 48917
 Phone: 517-449-2329
 Mobile:
 E-Mail: mdenno@dktruck.com

Data Code	Description	Weight Front	Weight Rear	Retail Price
539-003	POWER STEERING PUMP			STD
534-015	2 QUART SEE THROUGH POWER STEERING RESERVOIR			STD
40T-002	CURRENT AVAILABLE SYNTHETIC 75W-90 FRONT AXLE LUBE			\$17.00
Front Suspension				
620-1D8	13,300# TAPERLEAF FRONT SUSPENSION	75		\$313.00
619-005	MAINTENANCE FREE RUBBER BUSHINGS - FRONT SUSPENSION			STD
410-001	FRONT SHOCK ABSORBERS			STD
Rear Axle and Equipment				
420-1K3	MT-40-14X 40,000# R-SERIES TANDEM REAR AXLE		2,500	\$9,922.00
421-586	5.86 REAR AXLE RATIO			N/C
424-001	IRON REAR AXLE CARRIER WITH STANDARD AXLE HOUSING			STD
386-073	MXL 17T MERITOR EXTENDED LUBE MAIN DRIVELINE WITH HALF ROUND YOKES			\$141.00
388-073	MXL 17T MERITOR EXTENDED LUBE INTERAXLE DRIVELINE WITH HALF ROUND YOKES			N/C
878-045	(1) INTERAXLE LOCK VALVE FOR TANDEM DRIVE AXLES			N/C
87A-005	INDICATOR LIGHT FOR EACH INTERAXLE LOCKOUT SWITCH			N/C
423-020	MERITOR 16.5X7 Q+ CAST SPIDER CAM REAR BRAKES, DOUBLE ANCHOR, FABRICATED SHOES			\$26.00
433-002	NON-ASBESTOS REAR BRAKE LINING			STD
434-005	BRAKE CAMS AND CHAMBERS ON FORWARD SIDE OF DRIVE AXLE(S) WITH AUXILIARY SUPPORT BRACKETS			STD
451-001	CAST IRON OUTBOARD REAR BRAKE DRUMS		-20	STD
425-002	REAR BRAKE DUST SHIELDS		10	\$130.00
440-006	REAR OIL SEALS			STD
426-101	WABCO TRISTOP D LONGSTROKE 2-DRIVE AXLE SPRING PARKING CHAMBERS		20	N/C
428-002	MERITOR AUTOMATIC REAR SLACK ADJUSTERS			STD
41T-002	CURRENT AVAILABLE SYNTHETIC 75W-90 REAR AXLE LUBE			STD



Prepared for:
 Ric Simon
 FALCON ASPHALT REPAIR
 EQUIPMENT
 2600 W Salzburg Road
 Freeland, MI 48623
 Phone: 989-495-9332

Prepared by:
 Mike Denno
 D & K TRUCK COMPANY
 3020 Snow Rd
 LANSING, MI 48917
 Phone: 517-449-2329
 Mobile:
 E-Mail: mdenno@dktruck.com

Data Code	Description	Weight Front	Weight Rear	Retail Price
Rear Suspension				
622-218	AIRLINER 40,000# EXTRA DUTY REAR SUSPENSION		255	\$1,272.00
621-007	AIRLINER HIGH POSITION RIDE HEIGHT			STD
431-005	RESTRAINED AXLE SEATS IN AXLE CLAMP GROUP			STD
624-016	51 INCH AXLE SPACING			N/C
888-078	IGNITION CONTROLLED ELECTRIC DUMP SWITCH FOR AIR SUSPENSION WITH STATE RETENTION AND GAUGE			\$147.00
87D-012	REAR AIR SUSPENSION DUMP VALVE AUTOFILL >5 MPH WITH INDICATOR LIGHT			N/C
910-001	SINGLE AIR REAR SUSPENSION LEVELING VALVE			STD
623-002	TRANSVERSE CONTROL RODS			STD
439-005	REAR SHOCK ABSORBERS - TWO AXLES (TANDEM) (AIR RIDE SUSPENSION)			N/C
Pusher / Tag Equipment				
429-998	NO PUSHER/TAG BRAKE DUST SHIELDS			STD
Brake System				
018-002	AIR BRAKE PACKAGE			STD
490-100	WABCO 4S/4M ABS			(\$166.00)
871-001	REINFORCED NYLON, FABRIC BRAID AND WIRE BRAID CHASSIS AIR LINES			STD
904-001	FIBER BRAID PARKING BRAKE HOSE			STD
412-001	STANDARD BRAKE SYSTEM VALVES			STD
46D-002	STANDARD AIR SYSTEM PRESSURE PROTECTION SYSTEM			STD
413-002	STD U.S. FRONT BRAKE VALVE			STD
432-003	RELAY VALVE WITH 5-8 PSI CRACK PRESSURE, NO REAR PROPORTIONING VALVE			STD
480-088	WABCO SYSTEM SAVER HP WITH INTEGRAL AIR GOVERNOR AND HEATER			STD
483-004	WABCO OIL COALESCING FILTER FOR AIR DRYER			\$11.00
479-012	AIR DRYER MOUNTED UNDER HOOD			N/C
460-1AU	STEEL AIR TANKS MOUNTED AFT INSIDE AND/OR BELOW FRAME JUST FORWARD OF REAR SUSPENSION, NO TRIPLE OR TORPEDO TANKS			\$16.00
477-004	PULL CABLES ON ALL AIR RESERVOIR(S)			\$3.00



Prepared for:
 Ric Simon
 FALCON ASPHALT REPAIR
 EQUIPMENT
 2600 W Salzburg Road
 Freeland, MI 48623
 Phone: 989-495-9332

Prepared by:
 Mike Denno
 D & K TRUCK COMPANY
 3020 Snow Rd
 LANSING, MI 48917
 Phone: 517-449-2329
 Mobile:
 E-Mail: mdenno@dktruck.com

Data Code	Description	Weight Front	Weight Rear	Retail Price
Trailer Connections				
481-998	NO TRAILER AIR HOSE			STD
476-998	NO AIR HOSE HANGER			STD
310-998	NO TRAILER ELECTRICAL CABLE			STD
Wheelbase & Frame				
545-507	5075MM (200 INCH) WHEELBASE			N/C
546-100	11/32X3-1/2X10-3/16 INCH STEEL FRAME (8.73MMX258.8MM/0.344X10.19 INCH) 120KSI	100	90	\$413.00
552-039	1825MM (72 INCH) REAR FRAME OVERHANG			N/C
55W-007	FRAME OVERHANG RANGE: 71 INCH TO 80 INCH	-20	90	N/C
AC8-99D	CALC'D BACK OF CAB TO REAR SUSP C/L (CA) : 134.25 in			
AE8-99D	CALCULATED EFFECTIVE BACK OF CAB TO REAR SUSPENSION C/L (CA) : 131.25 in			
AE4-99D	CALC'D FRAME LENGTH - OVERALL : 310.68 in			
FSS-0LH	CALCULATED FRAME SPACE LH SIDE : 74.79 in			N/C
FSS-0RH	CALCULATED FRAME SPACE RH SIDE : 76.88 in			N/C
553-001	SQUARE END OF FRAME			STD
550-001	FRONT CLOSING CROSSMEMBER			STD
559-001	STANDARD WEIGHT ENGINE CROSSMEMBER			STD
561-001	STANDARD CROSSMEMBER BACK OF TRANSMISSION			STD
562-001	STANDARD MIDSHIP #1 CROSSMEMBER(S)			STD
572-001	STANDARD REARMOST CROSSMEMBER			STD
565-002	HEAVY DUTY SUSPENSION CROSSMEMBER		30	N/C
Chassis Equipment				
556-1AP	THREE-PIECE 14 INCH PAINTED STEEL BUMPER WITH COLLAPSIBLE ENDS	30		\$65.00
558-001	FRONT TOW HOOKS - FRAME MOUNTED	15		\$74.00
574-011	SINGLE LICENSE PLATE BUMPER MOUNTING ON LH SIDE			STD
585-042	BETTS B-25 PAINTED MUDFLAP BRACKETS		15	\$75.00
590-001	BLACK MUDFLAPS		15	\$42.00
586-024	FENDER AND FRONT OF HOOD MOUNTED FRONT MUDFLAPS			STD
551-007	GRADE 8 THREADED HEX HEADED FRAME FASTENERS			STD



Prepared for:
 Ric Simon
 FALCON ASPHALT REPAIR
 EQUIPMENT
 2600 W Salzburg Road
 Freeland, MI 48623
 Phone: 989-495-9332

Prepared by:
 Mike Denno
 D & K TRUCK COMPANY
 3020 Snow Rd
 LANSING, MI 48917
 Phone: 517-449-2329
 Mobile:
 E-Mail: mdenno@dktruck.com

Data Code	Description	Weight Front	Weight Rear	Retail Price
44Z-005	EXTERIOR HARNESSSES WRAPPED IN ABRASION TAPE, SECONDARY COVERING, & CONNECTOR PROTECTION			\$945.00
607-001	CLEAR FRAME RAILS FROM BACK OF CAB TO FRONT REAR SUSPENSION BRACKET, BOTH RAILS OUTBOARD			\$218.00
Fifth Wheel				
578-998	NO FIFTH WHEEL			STD
Fuel Tanks				
204-215	50 GALLON/189 LITER SHORT RECTANGULAR ALUMINUM FUEL TANK - LH	20		\$348.00
218-005	RECTANGULAR FUEL TANK(S)			STD
215-005	PLAIN ALUMINUM/PAINTED STEEL FUEL/HYDRAULIC TANK(S) WITH PAINTED BANDS			STD
212-007	FUEL TANK(S) FORWARD			STD
232-510	10 GALLONS ADDITIONAL FUEL			\$100.00
664-003	BLACK STEP FINISH			N/C
205-001	FUEL TANK CAP(S)			STD
122-1J1	DETROIT FUEL/WATER SEPARATOR WITH WATER IN FUEL SENSOR, HAND PRIMER AND 12 VOLT PREHEATER"	-5		\$59.00
216-020	EQUIFLO INBOARD FUEL SYSTEM			STD
20E-004	AUXILIARY FUEL SUPPLY AND RETURN PORTS LOCATED ON LH FUEL TANK			\$22.00
202-016	HIGH TEMPERATURE REINFORCED NYLON FUEL LINE			STD
Tires				
093-1YX	CONTINENTAL HSC3 11R22.5 16 PLY RADIAL FRONT TIRES	48		(\$200.00)
094-12P	CONTINENTAL HDR2+ 11R22.5 14 PLY RADIAL REAR TIRES		184	(\$824.00)
Hubs				
418-060	CONMET PRESET PLUS PREMIUM IRON FRONT HUBS			STD
450-060	CONMET PRESET PLUS PREMIUM IRON REAR HUBS			STD
Wheels				
502-753	MAXION WHEELS 91262 22.5X8.25 10-HUB PILOT 6.20 INSET 5-HAND STEEL DISC FRONT WHEELS	10		(\$4.00)



Prepared for:
 Ric Simon
 FALCON ASPHALT REPAIR
 EQUIPMENT
 2600 W Salzburg Road
 Freeland, MI 48623
 Phone: 989-495-9332

Prepared by:
 Mike Denno
 D & K TRUCK COMPANY
 3020 Snow Rd
 LANSING, MI 48917
 Phone: 517-449-2329
 Mobile:
 E-Mail: mdenno@dktruck.com

Data Code	Description	Weight Front	Weight Rear	Retail Price
505-753	MAXION WHEELS 91262 22.5X8.25 10-HUB PILOT 5-HAND STEEL DISC REAR WHEELS		40	(\$16.00)
496-011	FRONT WHEEL MOUNTING NUTS			STD
497-011	REAR WHEEL MOUNTING NUTS			STD
Cab Exterior				
829-071	106 INCH BBC FLAT ROOF ALUMINUM CONVENTIONAL CAB			STD
650-008	AIR CAB MOUNTING			\$97.00
648-002	NONREMOVABLE BUGSCREEN MOUNTED BEHIND GRILLE			\$36.00
678-001	LH AND RH GRAB HANDLES			STD
646-045	MOLD-IN COLOR GRILLE			STD
65X-011	MOLD-IN COLOR HOOD MOUNTED AIR INTAKE GRILLE			STD
644-004	FIBERGLASS HOOD			STD
690-002	TUNNEL/FIREWALL LINER			STD
727-066	DUAL 26 INCH RECTANGULAR POLISHED ALUMINUM AIR HORNS ROOF MOUNTED	8		\$185.00
726-001	SINGLE ELECTRIC HORN			STD
728-002	DUAL HORN SHIELDS			N/C
575-001	REAR LICENSE PLATE MOUNT END OF FRAME			STD
312-043	INTEGRAL HEADLIGHT/MARKER ASSEMBLY			STD
302-047	LED AERODYNAMIC MARKER LIGHTS			STD
311-998	NO DAYTIME RUNNING LIGHTS			(\$21.00)
294-1AY	INTEGRAL LED STOP/TAIL/BACKUP LIGHTS			\$175.00
300-015	STANDARD FRONT TURN SIGNAL LAMPS			STD
744-1BK	DUAL WEST COAST MOLDED-IN COLOR HEATED MIRRORS WITH LH AND RH REMOTE			STD
797-001	DOOR MOUNTED MIRRORS			STD
796-001	102 INCH EQUIPMENT WIDTH			STD
743-1AP	LH AND RH 8 INCH MOLDED-IN COLOR CONVEX MIRRORS MOUNTED UNDER PRIMARY MIRRORS			STD
729-001	STANDARD SIDE/REAR REFLECTORS			STD
677-055	RH AFTERTREATMENT SYSTEM CAB ACCESS WITH POLISHED DIAMOND PLATE COVER			\$81.00
764-010	COMPOSITE EXTERIOR SUN VISOR	10		\$280.00
768-043	63X14 INCH TINTED REAR WINDOW			STD
661-003	TINTED DOOR GLASS LH AND RH WITH TINTED NON-OPERATING WING WINDOWS			STD



Prepared for:
 Ric Simon
 FALCON ASPHALT REPAIR
 EQUIPMENT
 2600 W Salzburg Road
 Freeland, MI 48623
 Phone: 989-495-9332

Prepared by:
 Mike Denno
 D & K TRUCK COMPANY
 3020 Snow Rd
 LANSING, MI 48917
 Phone: 517-449-2329
 Mobile:
 E-Mail: mdenno@dktruck.com

Data Code	Description	Weight Front	Weight Rear	Retail Price
654-011	RH AND LH ELECTRIC POWERED WINDOWS			STD
663-013	1-PIECE SOLAR GREEN GLASS WINDSHIELD			STD
659-019	2 GALLON WINDSHIELD WASHER RESERVOIR WITHOUT FLUID LEVEL INDICATOR, FRAME MOUNTED			STD
Cab Interior				
055-017	PROFESSIONAL TRIM PACKAGE			STD
707-105	MIST AND CARBON CLOTH INTERIOR "PROFESSIONAL"			STD
70K-016	CARBON WITH BASE BLACK ACCENT			STD
706-013	MOLDED PLASTIC DOOR PANEL			STD
708-013	MOLDED PLASTIC DOOR PANEL			STD
772-006	BLACK MATS WITH SINGLE INSULATION			STD
785-026	(1)DASH MOUNTED 12V POWER OUTLET, (1)DASH MOUNTED DUAL USB-C OUTLET			\$42.00
691-001	FORWARD ROOF MOUNTED CONSOLE			STD
693-035	LH AND RH KICKPLATES			\$131.00
738-021	DIGITAL ALARM CLOCK IN DRIVER DISPLAY			STD
742-007	(2) CUP HOLDERS LH AND RH DASH			STD
680-029	M2/SD DASH			STD
720-002	2-1/2 LB. FIRE EXTINGUISHER	5		\$37.00
700-002	HEATER, DEFROSTER AND AIR CONDITIONER			STD
701-001	STANDARD HVAC DUCTING			STD
703-005	MAIN HVAC CONTROLS WITH RECIRCULATION SWITCH			STD
170-015	STANDARD HEATER PLUMBING			STD
130-041	VALEO HEAVY DUTY A/C REFRIGERANT COMPRESSOR			STD
702-002	BINARY CONTROL, R-134A			STD
739-033	STANDARD INSULATION			STD
285-013	SOLID-STATE CIRCUIT PROTECTION AND FUSES			STD
280-007	12V NEGATIVE GROUND ELECTRICAL SYSTEM			STD
324-1B3	STANDARD LED CAB LIGHTING			STD
787-998	NO SECURITY DEVICE			(\$300.00)
657-001	DOOR LOCKS AND IGNITION SWITCH KEYED THE SAME			STD
78G-004	KEY QUANTITY OF 4			\$18.00
655-005	LH AND RH ELECTRIC DOOR LOCKS			STD
722-002	TRIANGULAR REFLECTORS WITHOUT FLARES	10		\$31.00



Prepared for:
 Ric Simon
 FALCON ASPHALT REPAIR
 EQUIPMENT
 2600 W Salzburg Road
 Freeland, MI 48623
 Phone: 989-495-9332

Prepared by:
 Mike Denno
 D & K TRUCK COMPANY
 3020 Snow Rd
 LANSING, MI 48917
 Phone: 517-449-2329
 Mobile:
 E-Mail: mdenno@dktruck.com

Data Code	Description	Weight Front	Weight Rear	Retail Price
756-338	BASIC ISRINGHAUSEN HIGH BACK AIR SUSPENSION DRIVERS SEAT WITH MECHANICAL LUMBAR AND INTEGRATED CUSHION EXTENSION	30		\$167.00
760-343	2 MAN TOOL BOX MID BACK NON SUSPENSION PASSENGER SEAT, SEATS INC	20		\$308.00
759-007	DUAL DRIVER SEAT ARMRESTS, NO PASSENGER SEAT ARMRESTS	4		\$67.00
711-004	LH AND RH INTEGRAL DOOR PANEL ARMRESTS			STD
758-022	BLACK MORDURA CLOTH DRIVER SEAT COVER			\$21.00
761-023	BLACK MORDURA CLOTH PASSENGER SEAT COVER			\$22.00
763-101	BLACK SEAT BELTS			STD
532-002	ADJUSTABLE TILT AND TELESCOPING STEERING COLUMN			STD
540-044	4-SPOKE 18 INCH (450MM) BLACK STEERING WHEEL WITH SWITCHES			STD
765-002	DRIVER AND PASSENGER INTERIOR SUN VISORS			STD

Instruments & Controls

106-002	ELECTRONIC ACCELERATOR CONTROL			STD
734-024	INTEGRATED UPPER & LOWER STORAGE PANELS			STD
870-001	BLACK GAUGE BEZELS			STD
486-001	LOW AIR PRESSURE INDICATOR LIGHT AND AUDIBLE ALARM			STD
840-001	DUAL NEEDLE PRIMARY AND SECONDARY AIR PRESSURE GAUGE			STD
198-003	DASH MOUNTED AIR RESTRICTION INDICATOR WITH GRADUATIONS			\$25.00
149-015	ELECTRONIC CRUISE CONTROL WITH CONTROLS ON STEERING WHEEL SPOKES			STD
156-007	KEY OPERATED IGNITION SWITCH AND INTEGRAL START POSITION; 4 POSITION OFF/RUN/START/ACCESSORY			STD
811-044	PREMIUM INSTRUMENT CLUSTER WITH 5.0 INCH TFT COLOR DISPLAY			STD
81B-003	DIGITAL PANEL LAMP DIMMER SWITCH IN DRIVER DISPLAY			STD
160-038	HEAVY DUTY ONBOARD DIAGNOSTICS INTERFACE CONNECTOR LOCATED BELOW LH DASH			STD
844-001	2 INCH ELECTRIC FUEL GAUGE			STD



Prepared for:
 Ric Simon
 FALCON ASPHALT REPAIR
 EQUIPMENT
 2600 W Salzburg Road
 Freeland, MI 48623
 Phone: 989-495-9332

Prepared by:
 Mike Denno
 D & K TRUCK COMPANY
 3020 Snow Rd
 LANSING, MI 48917
 Phone: 517-449-2329
 Mobile:
 E-Mail: mdenno@dktruck.com

Data Code	Description	Weight Front	Weight Rear	Retail Price
4C0-998	NO ADDITIONAL EXTRA SWITCH ACCUATORS			STD
856-001	ELECTRICAL ENGINE COOLANT TEMPERATURE GAUGE			STD
864-022	DIGITAL TRANSMISSION OIL TEMPERATURE IN DRIVER DISPLAY			STD
867-004	ELECTRONIC OUTSIDE TEMPERATURE SENSOR DISPLAY IN DRIVER MESSAGE CENTER			STD
830-017	ENGINE AND TRIP HOUR METERS INTEGRAL WITHIN DRIVER DISPLAY			STD
372-123	PTO CONTROLS FOR ENHANCED VEHICLE ELECTRIC/ELECTRONIC ARCHITECTURE			\$40.00
736-998	NO OBSTACLE DETECTION SYSTEM			(\$4,324.00)
72J-998	NO DR ASSIST SYSTEM			(\$32.00)
49B-998	NO VEHICLE STABILITY ADVISOR OR CONTROL			(\$1,134.00)
73B-998	NO LANE DEPARTURE WARNING SYSTEM			(\$1,080.00)
852-002	ELECTRIC ENGINE OIL PRESSURE GAUGE			STD
746-137	AM/FM/WB WORLD TUNER RADIO WITH BLUETOOTH, USB AND AUXILIARY INPUTS, J1939			STD
747-001	DASH MOUNTED RADIO			STD
750-002	(2) RADIO SPEAKERS IN CAB			STD
753-998	NO AM/FM RADIO ANTENNA			(\$47.00)
748-006	POWER AND GROUND WIRING PROVISION OVERHEAD			\$18.00
749-001	ROOF/OVERHEAD CONSOLE CB RADIO PROVISION			\$55.00
752-017	MULTI-BAND AM/FM/WB/CB LH MIRROR MOUNTED ANTENNA SYSTEM			\$194.00
74D-006	STANDARD RADIO WIRING WITH STEERING WHEEL CONTROLS			STD
810-027	ELECTRONIC MPH SPEEDOMETER WITH SECONDARY KPH SCALE, WITHOUT ODOMETER			STD
817-001	STANDARD VEHICLE SPEED SENSOR			STD
812-001	ELECTRONIC 3000 RPM TACHOMETER			STD
813-1C8	DETROIT CONNECT PLATFORM HARDWARE			STD
8D1-303	3 YEARS DAIMLER CONNECTIVITY BASE PACKAGE (FEATURES VARY BY MODEL) POWERED BY DETROIT CONNECT			STD
6TS-005	TMC RP1226 ACCESSORY CONNECTOR LOCATED BEHIND PASSENGER SIDE REMOVEABLE DASH PANEL			STD



Prepared for:
 Ric Simon
 FALCON ASPHALT REPAIR
 EQUIPMENT
 2600 W Salzburg Road
 Freeland, MI 48623
 Phone: 989-495-9332

Prepared by:
 Mike Denno
 D & K TRUCK COMPANY
 3020 Snow Rd
 LANSING, MI 48917
 Phone: 517-449-2329
 Mobile:
 E-Mail: mdenno@dktruck.com

Data Code	Description	Weight Front	Weight Rear	Retail Price
162-002	IGNITION SWITCH CONTROLLED ENGINE STOP			STD
329-136	THREE EXTRA HARDWIRED SWITCHES IN DASH, ROUTE TO END OF FRAME, BLUNTCUT			\$190.00
4C1-009	HARDWIRE SWITCH #1, ON/OFF/ON MOMENTARY, 20 AMPS IGNITION POWER			\$15.00
4C2-025	HARDWIRE SWITCH #2, ON/OFF LATCHING, 20 AMPS IGNITION POWER			\$15.00
4C3-005	HARDWIRE SWITCH #3, ON/OFF MOMENTARY, 20 AMPS IGNITION POWER			\$15.00
81Y-005	PRE-TRIP INSPECTION FEATURE FOR EXTERIOR LAMPS ONLY			\$12.00
264-030	(1) OVERHEAD MOUNTED LANYARD CONTROL FOR DRIVER AIR HORN			(\$23.00)
883-998	NO TRAILER HAND CONTROL BRAKE VALVE			STD
842-006	DIGITAL TURBO AIR PRESSURE IN DRIVER DISPLAY			N/C
836-015	DIGITAL VOLTAGE DISPLAY INTEGRAL WITH DRIVER DISPLAY			STD
660-008	SINGLE ELECTRIC WINDSHIELD WIPER MOTOR WITH DELAY			STD
304-030	ROTARY HEADLAMP SWITCH, MARKER LIGHTS/HEADLIGHTS SWITCH WITH PULL OUT FOR OPTIONAL FOG/ROAD LAMPS			N/C
882-009	ONE VALVE PARKING BRAKE SYSTEM WITH WARNING INDICATOR			STD
299-020	SELF CANCELING TURN SIGNAL SWITCH WITH DIMMER, HEADLAMP FLASH, WASH/WIPE/INTERMITTENT			STD
298-046	INTEGRAL ELECTRONIC TURN SIGNAL FLASHER WITH 40 AMP (20 AMP PER SIDE) TRAILER LAMP CAPACITY			STD

Design

065-000	PAINT: ONE SOLID COLOR			STD
---------	------------------------	--	--	-----

Color

980-5F6	CAB COLOR A: L0006EY WHITE ELITE EY			STD
986-020	BLACK, HIGH SOLIDS POLYURETHANE CHASSIS PAINT			STD
962-972	POWDER WHITE (N0006EA) FRONT WHEELS/RIMS (PKWHT21, TKWHT21, W, TW)			STD
966-972	POWDER WHITE (N0006EA) REAR WHEELS/RIMS (PKWHT21, TKWHT21, W, TW)			STD
964-6Z7	BUMPER PAINT: FP24812 ARGENT SILVER DUPONT FLEX			STD



Prepared for:
 Ric Simon
 FALCON ASPHALT REPAIR
 EQUIPMENT
 2600 W Salzburg Road
 Freeland, MI 48623
 Phone: 989-495-9332

Prepared by:
 Mike Denno
 D & K TRUCK COMPANY
 3020 Snow Rd
 LANSING, MI 48917
 Phone: 517-449-2329
 Mobile:
 E-Mail: mdenno@dktruck.com

Data Code	Description	Weight Front	Weight Rear	Retail Price
976-995	SUNVISOR PAINTED SAME AS CAB COLOR A			N/C
969-998	NO CAB/BODY EXTERIOR DECALS			STD
963-003	STANDARD E COAT/UNDERCOATING			STD

Certification / Compliance

996-001	U.S. FMVSS CERTIFICATION, EXCEPT SALES CABS AND GLIDER KITS			STD
---------	---	--	--	-----

Weight Summary

	Weight Front	Weight Rear	Total Weight
Factory Weight ⁺	6997 lbs	6794 lbs	13791 lbs
Dealer Installed Options	0 lbs	0 lbs	0 lbs
Total Weight⁺	6997 lbs	6794 lbs	13791 lbs

Dealer Installed Options

		Weight Front	Weight Rear	Price
PREP	DEALER PRE DELIVERY INSPECTION	0	0	\$500.00
MATS	FLOOR MATS	0	0	\$50.00
Total Dealer Installed Options		0 lbs	0 lbs	\$550.00

(+) Weights shown are estimates only.

If weight is critical, contact Customer Application Engineering.

(**) Prices shown do not include taxes, fees, etc... "Net Equipment Selling Price" is located on the Quotation Details Proposal Report.

(***) All cost increases for major components (Engines, Transmissions, Axles, Front and Rear Tires) and government mandated requirements, tariffs, and raw material surcharges will be passed through and added to factory invoices.



Prepared for:
 Ric Simon
 FALCON ASPHALT REPAIR
 EQUIPMENT
 2600 W Salzburg Road
 Freeland, MI 48623
 Phone: 989-495-9332

Prepared by:
 Mike Denno
 D & K TRUCK COMPANY
 3020 Snow Rd
 LANSING, MI 48917
 Phone: 517-449-2329
 Mobile:
 E-Mail: mdenno@dktruck.com

D I M E N S I O N S

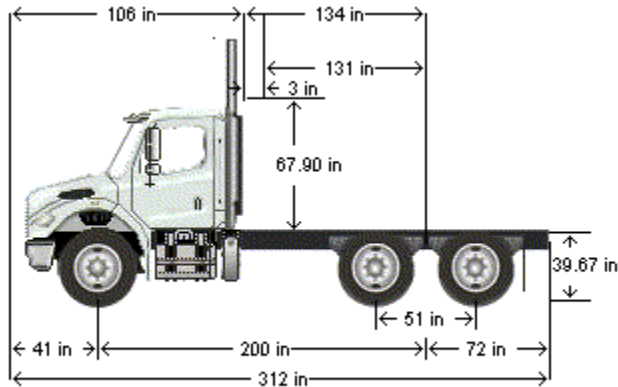


TABLE SUMMARY - DIMENSIONS

Dimensions	Inches
Bumper to Back of Cab (BBC)	106.3
Bumper to Centerline of Front Axle (BA)	40.7
Front Axle to Back of Cab (AC)	65.6
Min. Cab to Body Clearance (CB)	3.0
Back of Cab to Centerline of Rear Axle(s) (CA)	134.3
Effective Back of Cab to Centerline of Rear Axle(s) (Effective CA)	131.3
Back of Cab Protrusions (Exhaust/Intake) (CP)	2.0
Back of Cab Protrusions (Side Extenders/Trim Tab) (CP)	0.0
Back of Cab Protrusions (CNG Tank)	0.0
Back of Cab Clearance (CL)	3.0
Back of Cab to End of Frame	206.2
Cab Height (CH)	67.9
Wheelbase (WB)	199.8
Frame Overhang (OH)	71.9
Overall Frame Length	310.7
Overall Length (OAL)	312.5
Rear Axle Spacing	51.0
Unladen Frame Height at Centerline of Rear Axle	39.7

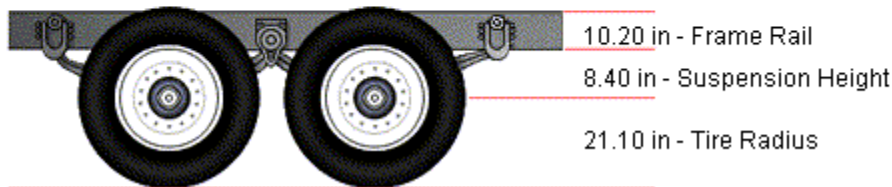
Performance calculations are estimates only. If performance calculations are critical, please contact Customer Application Engineering.

Prepared for:
 Ric Simon
 FALCON ASPHALT REPAIR
 EQUIPMENT
 2600 W Salzburg Road
 Freeland, MI 48623
 Phone: 989-495-9332

Prepared by:
 Mike Denno
 D & K TRUCK COMPANY
 3020 Snow Rd
 LANSING, MI 48917
 Phone: 517-449-2329
 Mobile:
 E-Mail: mdenno@dktruck.com

U N L A D E N F R A M E H E I G H T

Unladen Height	Requested	Calculated
Frame (in)	N/A	39.70



VEHICLE SPECIFICATIONS SUMMARY - UNLADEN FRAME HEIGHT

Model	M2106
Cab Size (829).....	106 INCH BBC FLAT ROOF ALUMINUM CONVENTIONAL CAB
Frame Rails (546).....	11/32X3-1/2X10-3/16 INCH STEEL FRAME (8.73MMX258.8MM/0.344X10.19 INCH) 120KSI(546)
Web Height (in).....	10.1875
Flange Thickness (in).....	0.34375
Rear Suspension (622).....	AIRLINER 40,000# EXTRA DUTY REAR SUSPENSION
Rear Suspension Ride Height (621).....	AIRLINER HIGH POSITION RIDE HEIGHT
Axle C/L to Bottom of Frame (in).....	8.383
Rear Tires (094)	CONTINENTAL HDR2+ 11R22.5 14 PLY RADIAL REAR TIRES
Unladen Radius (in)	21.1
Fifth Wheel (578)	NO FIFTH WHEEL
Requested Min Height (in)	0.0
Requested Max Height (in)	1
Fifth Wheel Leg Height (582)	NO FIFTH WHEEL LEG HEIGHT
Rear Tow Device (587).....	NO REAR TOWING DEVICE
Requested Min Height (in)	0.0
Requested Max Height (in)	0.0

Performance calculations are estimates only. If performance calculations are critical, please contact Customer Application Engineering.

EXHIBIT A
Village of Oak Park
Equipment Replacement Analysis

3/1/2024

Vehicle #	Year	Make	Model	Mileage	VIN #	Purchase Date	Original Purchase Price	Current Trade-In Value	Total Maintenance Costs		
									Repairs and Regular Maintenance (includes parts, labor and fluids)	Fuel	Combined Total Costs
57	2002	IH	4900	30,000	1HTSDAAR52H525255	12/5/2001	\$98,167.00	\$12,000.00	\$87,173.00	\$26,976.00	\$114,149.00



Office of the Secretary of State

ilsos.gov

Business Entity Search

Entity Information

Entity Name	FALCON ROAD MAINTENANCE EQUIPMENT, LLC		
Principal Address	2600 W SALZBURG ROAD FREELAND, MI 48623		
File Number	06600689	Status	ACTIVE on 03-14-2023
Entity Type	LLC	Type of LLC	Foreign
Org. Date/Admission Date	04-19-2018	Jurisdiction	MI
Duration	PERPETUAL		
Annual Report Filing Date	00-00-0000	Annual Report Year	2024
Agent Information	C T CORPORATION SYSTEM 208 SO LASALLE ST, SUITE 814 CHICAGO, IL 60604-1101	Agent Change Date	04-19-2018

Services and More Information

Choose a tab below to view services available to this business and more information about this business.

[Purchase Master Entity Certificate of Good Standing](#)

[File Annual Report](#)

[Adopting Assumed Name](#)

[Change of Registered Agent and/or Registered Office](#)

Request for Taxpayer Identification Number and Certification

**Give Form to the
 requester. Do not
 send to the IRS.**

▶ Go to www.irs.gov/FormW9 for instructions and the latest information.

Print or type. See Specific Instructions on page 3.	<p>1 Name (as shown on your income tax return). Name is required on this line; do not leave this line blank. FALCON EQUIPMENT HOLDINGS, LLC</p> <p>2 Business name/disregarded entity name, if different from above FALCON ROAD MAINTENANCE EQUIPMENT, LLC</p> <p>3 Check appropriate box for federal tax classification of the person whose name is entered on line 1. Check only one of the following seven boxes.</p> <p> <input type="checkbox"/> Individual/sole proprietor or single-member LLC <input type="checkbox"/> C Corporation <input type="checkbox"/> S Corporation <input type="checkbox"/> Partnership <input type="checkbox"/> Trust/estate <input checked="" type="checkbox"/> Limited liability company. Enter the tax classification (C=C corporation, S=S corporation, P=Partnership) ▶ P Note: Check the appropriate box in the line above for the tax classification of the single-member owner. Do not check LLC if the LLC is classified as a single-member LLC that is disregarded from the owner unless the owner of the LLC is another LLC that is not disregarded from the owner for U.S. federal tax purposes. Otherwise, a single-member LLC that is disregarded from the owner should check the appropriate box for the tax classification of its owner. <input type="checkbox"/> Other (see instructions) ▶ </p>	<p>4 Exemptions (codes apply only to certain entities, not individuals; see instructions on page 3):</p> <p>Exempt payee code (if any) _____</p> <p>Exemption from FATCA reporting code (if any) _____</p> <p><small>(Applies to accounts maintained outside the U.S.)</small></p>
	<p>5 Address (number, street, and apt. or suite no.) See instructions. 2600 W. SALZBURG ROAD</p> <p>6 City, state, and ZIP code FREELAND, MI 48623</p> <p>7 List account number(s) here (optional)</p>	<p>Requester's name and address (optional)</p>

Part I Taxpayer Identification Number (TIN)

Enter your TIN in the appropriate box. The TIN provided must match the name given on line 1 to avoid backup withholding. For individuals, this is generally your social security number (SSN). However, for a resident alien, sole proprietor, or disregarded entity, see the instructions for Part I, later. For other entities, it is your employer identification number (EIN). If you do not have a number, see *How to get a TIN*, later.

Note: If the account is in more than one name, see the instructions for line 1. Also see *What Name and Number To Give the Requester* for guidelines on whose number to enter.

Social security number									
or									
Employer identification number									
4	7	-	2	6	5	4	1	9	6

Part II Certification

Under penalties of perjury, I certify that:

- The number shown on this form is my correct taxpayer identification number (or I am waiting for a number to be issued to me); and
- I am not subject to backup withholding because: (a) I am exempt from backup withholding, or (b) I have not been notified by the Internal Revenue Service (IRS) that I am subject to backup withholding as a result of a failure to report all interest or dividends, or (c) the IRS has notified me that I am no longer subject to backup withholding; and
- I am a U.S. citizen or other U.S. person (defined below); and
- The FATCA code(s) entered on this form (if any) indicating that I am exempt from FATCA reporting is correct.

Certification instructions. You must cross out item 2 above if you have been notified by the IRS that you are currently subject to backup withholding because you have failed to report all interest and dividends on your tax return. For real estate transactions, item 2 does not apply. For mortgage interest paid, acquisition or abandonment of secured property, cancellation of debt, contributions to an individual retirement arrangement (IRA), and generally, payments other than interest and dividends, you are not required to sign the certification, but you must provide your correct TIN. See the instructions for Part II, later.

Sign Here	Signature of U.S. person ▶ <i>Thomas Thompson ACCOUNTING MANAGER</i>	Date ▶ <i>12/30/2022</i>
------------------	--	--------------------------

General Instructions

Section references are to the Internal Revenue Code unless otherwise noted.

Future developments. For the latest information about developments related to Form W-9 and its instructions, such as legislation enacted after they were published, go to www.irs.gov/FormW9.

Purpose of Form

An individual or entity (Form W-9 requester) who is required to file an information return with the IRS must obtain your correct taxpayer identification number (TIN) which may be your social security number (SSN), individual taxpayer identification number (ITIN), adoption taxpayer identification number (ATIN), or employer identification number (EIN), to report on an information return the amount paid to you, or other amount reportable on an information return. Examples of information returns include, but are not limited to, the following.

- Form 1099-DIV (dividends, including those from stocks or mutual funds)
- Form 1099-MISC (various types of income, prizes, awards, or gross proceeds)
- Form 1099-B (stock or mutual fund sales and certain other transactions by brokers)
- Form 1099-S (proceeds from real estate transactions)
- Form 1099-K (merchant card and third party network transactions)
- Form 1098 (home mortgage interest), 1098-E (student loan interest), 1098-T (tuition)
- Form 1099-C (canceled debt)
- Form 1099-A (acquisition or abandonment of secured property)

Use Form W-9 only if you are a U.S. person (including a resident alien), to provide your correct TIN.

If you do not return Form W-9 to the requester with a TIN, you might be subject to backup withholding. See What is backup withholding, later.



The Village of Oak Park
Village Hall
123 Madison Street
Oak Park, Illinois 60302-4272

708.383.6400
Fax 708.383.6692
www.oak-park.us
village@oak-park.us

February 23, 2024

FALCON EQUIPMENT
c/o Matt Deutsch
2600 W. Salzburg Road
Freeland, MI 48623

Re: Letter of Intent for the purchase of one (1) 8 Ton Patch Truck

Dear Mr. Deutsch:

Please accept this letter as evidence of the Village of Oak Park's intent to purchase one (1) new 8 Ton Patch Truck as per the attached Falcon NASPO price quote 121132023-334.

Funds for this unit have been allocated as part of the approved Village's fiscal year 2024 budget. The Village Board is expected to approve the purchase at a Village Board meeting during last quarter of 2024.

We appreciate your cooperation in this matter. If you have any questions or require additional information, please contact me at (708) 358-5735.

Sincerely,

Ken Crowley
Superintendent of Fleet Services



NASPO PRICE QUOTE

No. 12132023-334

2600 W SALZBURG
FREELAND, MI 48623
Phone: (989) 495 – 9332
Fax: (989) 495 – 9342

Requested By: Midwest – Oak Park
Village of Oak Park
201 South Boulevard
Oak Park, IL 60302

Quote Date	Quote Good Through	Freight Terms	Requested By	Payment Terms
02/14/2024	02/29/2024	FOB Midland, MI	MPE	Net 30 Days

Qty	Item No	Description	Price
1		8TTRK 8 TON Patch Truck Diesel Fired Dual Burner unit. Hydraulic loading and unloading doors Battery charger package Smart Control package including: voltmeter, VIP, 7-day timer, temperature gauge, hour meter, and diagnostic package. Dumping frame Onboard hydraulics - utilizing existing PTO Shovel apron Skirting kit and bumper Hopper access platform Platform railings Ladder - 2 step Tool box - lane side Pylon holders Tool holders Federal Signal lighting kit, including: stop/tail/turn/reverse, markers, arrow board, work lights for hopper, platform and rear of machine, and beacon. Additional loading door lever near truck cab Backup camera Fire extinguisher DOT reflective tape DOT compliance kit: flare, triangles, etc. Mounted on chassis	\$150,094.00
		Discount NASPO CONTRACT	-\$15,009.00

Paint Color Falcon Red	Included
Warranty Two Year Factory	Included
Falcon CCMFG 5 Year Combustion Chamber Maintenance Free Guaranty	Included
Manual Operator, Parts and Service Manual (Electronic)	Included
Training On-site Operation and Service Training	Included
Options	
0037 50-Gallon Heated/Insulated Tack Tank w/ Dedicated Burner - Gravity Feed Withdrawal Via Molasses Valve at the Bottom of the Tank (Same Burner Type as Hopper Burner(s) and For Water Based Tack or Rejuvenator Only)	\$9,072.00
0080 Spray System - Viking HL32 Pump, 10- Gallon Flush Tank and Spray Wand w/ 1/2" Hoses (For Water Based Tack or Rejuvenator Only and Requires Heated Tack Tank Option)	\$5,860.00
NJP0099g Electric wash down system with hose reel	\$2,246.00
NJP1099B Spoils Bin mounted on frame Curb Side	\$1,218.00
Discount NASPO CONTRACT	-\$1,840.00
Freight Oak Park, IL to Freeland, MI Round trip	\$1,350.00
PDI, TRAINING	\$2,700.00
M2 106 Plus Freightliner with 40,000# Tandem Rear Axle Per Emailed Spec labeled FalconMY2025 Oak Park	\$111,833.00
Plus Applicable Sales Tax	

Why Falcon?

It's Versatile

- Recycle leftover asphalt, chunks and millings (a dual burner unit is required to recycle millings)
- Transport asphalt and keep it hot all day and hold it overnight
- Heat and re-heat cold patch

It's Cost-Effective

- When used as a hot box, it eliminates asphalt waste that occurs in the back of an unheated truck bed
- When used as a recycler, it recycles leftover asphalt and asphalt chunks torn up from the pavement
- Independently certified 92% fuel efficiency – uses less than 3 gallons of fuel per 8-hour shift

It's Reliable

- VIP Technology (patent pending) – Protects burner components by automatically preventing burner from operating with low battery voltage
- A Falcon is designed to allow the burner to run while in tow - preventing material from cooling while being transported
- Heat management system is engineered to provide even hopper temperatures – eliminating material scorching from hot spots and material hardening from cold spots
- Standard 2-year machine warranty and lifetime frame warranty

It's a Falcon

Truck Chassis Availability is Q4 2024

Completed Truck Patcher delivery is Q1 2025

Order must be placed no later than February 29,2024

SUBTOTAL

TAX

TOTAL

\$267,524.00

\$0.00

\$267,524.00

Accepted By



Accepted Date

2/23/24

Prepared for:
Ric Simon
FALCON ASPHALT REPAIR
EQUIPMENT
2600 W Salzburg Road
Freeland, MI 48623
Phone: 989-495-9332

Prepared by:
Mike Denno
D & K TRUCK COMPANY
3020 Snow Rd
LANSING, MI 48917
Phone: 517-449-2329
Mobile:
E-Mail: mdenno@dktruck.com

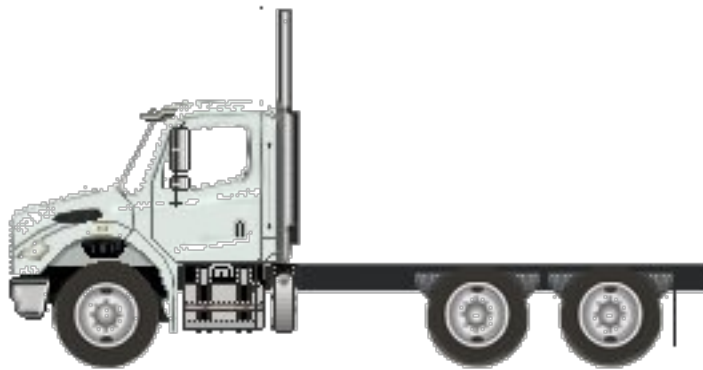
A proposal for



Prepared by
D & K TRUCK COMPANY
Mike Denno

Feb 06, 2024

Freightliner M2 106 Plus



Components shown may not reflect all spec'd options and are not to scale

Prepared for:
 Ric Simon
 FALCON ASPHALT REPAIR
 EQUIPMENT
 2600 W Salzburg Road
 Freeland, MI 48623
 Phone: 989-495-9332

Prepared by:
 Mike Denno
 D & K TRUCK COMPANY
 3020 Snow Rd
 LANSING, MI 48917
 Phone: 517-449-2329
 Mobile:
 E-Mail: mdenno@dktruck.com

S P E C I F I C A T I O N P R O P O S A L

Data Code	Description	Weight Front	Weight Rear	Retail Price
Price Level				
PRL-28M	M2 PRL-28M (EFF:MY25 ORDERS)			STD
Data Version				
DRL-028	SPECPRO21 DATA RELEASE VER 028			N/C
Vehicle Configuration				
001-172	M2 106 PLUS CONVENTIONAL CHASSIS	5,709	3,450	\$114,401.00
004-225	2025 MODEL YEAR SPECIFIED			STD
002-004	SET BACK AXLE - TRUCK			STD
019-004	STRAIGHT TRUCK PROVISION, NON-TOWING			STD
003-001	LH PRIMARY STEERING LOCATION			STD
General Service				
AA1-002	TRUCK CONFIGURATION			STD
AA6-002	DOMICILED, USA (EXCLUDING CALIFORNIA AND CARB OPT-IN STATES)			N/C
99D-027	EPA EMISSIONS CERTIFICATION FOR REGISTRATION OUTSIDE CARB STATES - EPA CLEAN IDLE (INCLUDES 6X4 INCH LABEL ON LOWER FORWARD OF DRIVER DOOR)			N/C
AF2-998	NONE			N/C
A85-011	CONSTRUCTION SERVICE			N/C
A84-1RO	ROAD AND HIGHWAY MAINTENANCE BUSINESS SEGMENT			N/C
AA4-013	MOIST BULK COMMODITY			N/C
AA5-002	TERRAIN/DUTY: 100% (ALL) OF THE TIME, IN TRANSIT, IS SPENT ON PAVED ROADS			STD
AB1-008	MAXIMUM 8% EXPECTED GRADE			STD
AB5-001	SMOOTH CONCRETE OR ASPHALT PAVEMENT - MOST SEVERE IN-TRANSIT (BETWEEN SITES) ROAD SURFACE			STD
995-091	MEDIUM TRUCK WARRANTY			STD
A66-99D	EXPECTED FRONT AXLE(S) LOAD : 13220.0 lbs			



Prepared for:
 Ric Simon
 FALCON ASPHALT REPAIR
 EQUIPMENT
 2600 W Salzburg Road
 Freeland, MI 48623
 Phone: 989-495-9332

Prepared by:
 Mike Denno
 D & K TRUCK COMPANY
 3020 Snow Rd
 LANSING, MI 48917
 Phone: 517-449-2329
 Mobile:
 E-Mail: mdenno@dktruck.com

Data Code	Description	Weight Front	Weight Rear	Retail Price
A68-99D	EXPECTED REAR DRIVE AXLE(S) LOAD : 40000.0 lbs			
A63-99D	EXPECTED GROSS VEHICLE WEIGHT CAPACITY : 53220.0 lbs			

Truck Service

AA3-005	FLATBED/PLATFORM/STAKE BODY			N/C
AF3-999	FALCON ASPHALT REPAIR EQUIPMENT			N/C
AF7-99D	EXPECTED BODY/PAYLOAD CG HEIGHT ABOVE FRAME "XX" INCHES : 32.0 in			

Engine

101-3BR	CUM L9 360 HP @ 2200 RPM; 2200 GOV RPM, 1150 LB-FT @ 1200 RPM	640	30	\$16,665.00
---------	--	-----	----	-------------

Electronic Parameters

79A-065	65 MPH ROAD SPEED LIMIT			N/C
79B-013	CRUISE CONTROL SPEED LIMIT 5 MPH LOWER THAN ROAD SPEED LIMIT			N/C
79W-024	CRUISE CONTROL BUTTON PTO CONTROL			N/C
79X-003	PTO SPEED 1 SETTING - 800 RPM			N/C
80G-002	PTO MINIMUM RPM - 700			N/C
80J-002	REGEN INHIBIT SPEED THRESHOLD - 5 MPH			N/C
80S-003	PTO 1, DASH SWITCH, ENGAGE BEFORE DRIVING			N/C

Engine Equipment

99C-024	EPA 2010/GHG 2024 CONFIGURATION			STD
13E-001	STANDARD OIL PAN			STD
105-001	ENGINE MOUNTED OIL CHECK AND FILL			STD
014-099	SIDE OF HOOD AIR INTAKE WITH FIREWALL MOUNTED DONALDSON AIR CLEANER			STD
124-1D7	DR 12V 160 AMP 28-SI QUADRAMOUNT PAD ALTERNATOR WITH REMOTE BATTERY VOLT SENSE			STD
292-235	(2) DTNA GENUINE, FLOODED STARTING, MIN 2000CCA, 370RC, THREADED STUD BATTERIES	10		\$13.00
290-017	BATTERY BOX FRAME MOUNTED			STD
281-001	STANDARD BATTERY JUMPERS			STD
282-001	SINGLE BATTERY BOX FRAME MOUNTED LH SIDE UNDER CAB			STD
291-017	WIRE GROUND RETURN FOR BATTERY CABLES WITH ADDITIONAL FRAME GROUND RETURN			STD



Prepared for:
 Ric Simon
 FALCON ASPHALT REPAIR
 EQUIPMENT
 2600 W Salzburg Road
 Freeland, MI 48623
 Phone: 989-495-9332

Prepared by:
 Mike Denno
 D & K TRUCK COMPANY
 3020 Snow Rd
 LANSING, MI 48917
 Phone: 517-449-2329
 Mobile:
 E-Mail: mdenno@dktruck.com

Data Code	Description	Weight Front	Weight Rear	Retail Price
289-001	NON-POLISHED BATTERY BOX COVER			STD
293-058	POSITIVE LOAD DISCONNECT WITH CAB MOUNTED CONTROL SWITCH MOUNTED OUTBOARD DRIVER SEAT	2		\$206.00
295-029	POSITIVE AND NEGATIVE POSTS FOR JUMPSTART LOCATED ON FRAME NEXT TO STARTER	2		\$88.00
306-015	PROGRESSIVE LOW VOLTAGE DISCONNECT AT 12.3 VOLTS FOR DESIGNATED CIRCUITS			STD
107-032	CUMMINS TURBOCHARGED 18.7 CFM AIR COMPRESSOR WITH INTERNAL SAFETY VALVE			STD
108-002	STANDARD MECHANICAL AIR COMPRESSOR GOVERNOR			STD
131-013	AIR COMPRESSOR DISCHARGE LINE			STD
152-041	ELECTRONIC ENGINE INTEGRAL SHUTDOWN PROTECTION SYSTEM			STD
128-076	CUMMINS ENGINE INTEGRAL BRAKE WITH VARIABLE GEOMETRY TURBO ON/OFF	20		STD
016-1C2	RH OUTBOARD UNDER STEP MOUNTED HORIZONTAL AFTERTREATMENT SYSTEM ASSEMBLY WITH RH B-PILLAR MOUNTED VERTICAL TAILPIPE	30	25	\$823.00
28F-014	ENGINE AFTERTREATMENT DEVICE, AUTOMATIC OVER THE ROAD REGENERATION AND VIRTUAL REGENERATION REQUEST SWITCH IN CLUSTER			STD
239-020	10 FOOT 00 INCH (120 INCH+0/-5.9 INCH) EXHAUST SYSTEM HEIGHT			N/C
237-1CR	RH CURVED VERTICAL TAILPIPE B-PILLAR MOUNTED ROUTED FROM STEP			N/C
23U-001	6 GALLON DIESEL EXHAUST FLUID TANK			STD
30N-003	100 PERCENT DIESEL EXHAUST FLUID FILL			STD
43X-002	LH MEDIUM DUTY STANDARD DIESEL EXHAUST FLUID TANK LOCATION			STD
23Y-001	STANDARD DIESEL EXHAUST FLUID PUMP MOUNTING			STD
43Y-001	STANDARD DIESEL EXHAUST FLUID TANK CAP			STD
242-011	ALUMINUM AFTERTREATMENT DEVICE/MUFFLER/TAILOPIPE SHIELD(S)			N/C
273-058	AIR POWERED ON/OFF ENGINE FAN CLUTCH			STD
276-001	AUTOMATIC FAN CONTROL WITHOUT DASH SWITCH, NON ENGINE MOUNTED			STD
110-003	CUMMINS SPIN ON FUEL FILTER			STD
118-008	COMBINATION FULL FLOW/BYPASS OIL FILTER			N/C



Prepared for:
 Ric Simon
 FALCON ASPHALT REPAIR
 EQUIPMENT
 2600 W Salzburg Road
 Freeland, MI 48623
 Phone: 989-495-9332

Prepared by:
 Mike Denno
 D & K TRUCK COMPANY
 3020 Snow Rd
 LANSING, MI 48917
 Phone: 517-449-2329
 Mobile:
 E-Mail: mdenno@dktruck.com

Data Code	Description	Weight Front	Weight Rear	Retail Price
266-101	900 SQUARE INCH ALUMINUM RADIATOR	15		N/C
103-039	ANTIFREEZE TO -34F, OAT (NITRITE AND SILICATE FREE) EXTENDED LIFE COOLANT			STD
171-007	GATES BLUE STRIPE COOLANT HOSES OR EQUIVALENT			STD
172-001	CONSTANT TENSION HOSE CLAMPS FOR COOLANT HOSES			STD
270-016	RADIATOR DRAIN VALVE			STD
168-002	LOWER RADIATOR GUARD			STD
138-011	PHILLIPS-TEMRO 1000 WATT/115 VOLT BLOCK HEATER	4		\$92.00
140-022	CHROME ENGINE HEATER RECEPTACLE MOUNTED UNDER LH DOOR			\$6.00
134-001	ALUMINUM FLYWHEEL HOUSING			STD
132-004	ELECTRIC GRID AIR INTAKE WARMER			STD
155-058	DELCO 12V 38MT HD STARTER WITH INTEGRATED MAGNETIC SWITCH			N/C

Transmission

342-582	ALLISON 3000 RDS AUTOMATIC TRANSMISSION WITH PTO PROVISION	200	60	\$6,785.00
---------	--	-----	----	------------

Transmission Equipment

343-339	ALLISON VOCATIONAL PACKAGE 223 - AVAILABLE ON 3000/4000 PRODUCT FAMILIES WITH VOCATIONAL MODELS RDS, HS, MH AND TRV			N/C
84B-012	ALLISON VOCATIONAL RATING FOR ON/OFF HIGHWAY APPLICATIONS AVAILABLE WITH ALL PRODUCT FAMILIES			N/C
84C-023	PRIMARY MODE GEARS, LOWEST GEAR 1, START GEAR 1, HIGHEST GEAR 6, AVAILABLE FOR 3000/4000 PRODUCT FAMILIES ONLY			N/C
84D-023	SECONDARY MODE GEARS, LOWEST GEAR 1, START GEAR 1, HIGHEST GEAR 6, AVAILABLE FOR 3000/4000 PRODUCT FAMILIES ONLY			N/C
84E-017	S5 PERFORMANCE LIMITING PRIMARY SHIFT SCHEDULE, AVAILABLE FOR 3000/4000 PRODUCT FAMILIES ONLY			N/C
84F-016	S5 PERFORMANCE LIMITING SECONDARY SHIFT SCHEDULE, AVAILABLE FOR 3000/4000 PRODUCT FAMILIES ONLY			N/C
84G-014	2200 RPM PRIMARY MODE SHIFT SPEED			N/C
84H-014	2200 RPM SECONDARY MODE SHIFT SPEED			N/C



Prepared for:
 Ric Simon
 FALCON ASPHALT REPAIR
 EQUIPMENT
 2600 W Salzburg Road
 Freeland, MI 48623
 Phone: 989-495-9332

Prepared by:
 Mike Denno
 D & K TRUCK COMPANY
 3020 Snow Rd
 LANSING, MI 48917
 Phone: 517-449-2329
 Mobile:
 E-Mail: mdenno@dktruck.com

Data Code	Description	Weight Front	Weight Rear	Retail Price
84J-000	ENGINE BRAKE RANGE PRESELECT RECOMMENDED BY DTNA AND ALLISON, THIS DEFINED BY ENGINE AND VOCATIONAL USAGE			STD
84K-000	ENGINE BRAKE RANGE ALTERNATE PRESELECT RECOMMENDED BY DTNA AND ALLISON, THIS DEFINED BY ENGINE AND VOCATIONAL USAGE			STD
84N-200	FUEL SENSE 2.0 DISABLED - PERFORMANCE - TABLE BASED			STD
84U-000	DRIVER SWITCH INPUT - DEFAULT - NO SWITCHES			STD
353-073	QUICKFIT BODY LIGHTING CONNECTOR UNDER CAB, WITH CAP			\$125.00
362-823	CUSTOMER INSTALLED CHELSEA 280 SERIES PTO			N/C
363-001	PTO MOUNTING, LH SIDE OF MAIN TRANSMISSION ALLISON			N/C
341-018	MAGNETIC PLUGS, ENGINE DRAIN, TRANSMISSION DRAIN, AXLE(S) FILL AND DRAIN			STD
345-078	HEAVY DUTY ELECTRONIC TRANSMISSION SHIFT CONTROL, COLUMN MOUNTED			N/C
97G-004	TRANSMISSION PROGNOSTICS - ENABLED 2013			N/C
370-015	WATER TO OIL TRANSMISSION COOLER, IN RADIATOR END TANK			STD
346-003	TRANSMISSION OIL CHECK AND FILL WITH ELECTRONIC OIL LEVEL CHECK			N/C
35T-001	SYNTHETIC TRANSMISSION FLUID (TES-295 COMPLIANT)			STD

Front Axle and Equipment

400-1A7	DETROIT DA-F-13.3-3 13,300# FF1 71.5 KPI/3.74 DROP SINGLE FRONT AXLE			\$253.00
402-020	MERITOR 15X4 Q+ CAM FRONT BRAKES			STD
403-002	NON-ASBESTOS FRONT BRAKE LINING			STD
419-023	CONMET CAST IRON FRONT BRAKE DRUMS			(\$12.00)
427-001	FRONT BRAKE DUST SHIELDS	5		\$49.00
409-006	FRONT OIL SEALS			STD
408-001	VENTED FRONT HUB CAPS WITH WINDOW, CENTER AND SIDE PLUGS - OIL			STD
416-022	STANDARD SPINDLE NUTS FOR ALL AXLES			STD
405-002	MERITOR AUTOMATIC FRONT SLACK ADJUSTERS			STD
536-050	TRW THP-60 POWER STEERING			STD



Prepared for:
 Ric Simon
 FALCON ASPHALT REPAIR
 EQUIPMENT
 2600 W Salzburg Road
 Freeland, MI 48623
 Phone: 989-495-9332

Prepared by:
 Mike Denno
 D & K TRUCK COMPANY
 3020 Snow Rd
 LANSING, MI 48917
 Phone: 517-449-2329
 Mobile:
 E-Mail: mdenno@dktruck.com

Data Code	Description	Weight Front	Weight Rear	Retail Price
539-003	POWER STEERING PUMP			STD
534-015	2 QUART SEE THROUGH POWER STEERING RESERVOIR			STD
40T-002	CURRENT AVAILABLE SYNTHETIC 75W-90 FRONT AXLE LUBE			\$17.00
Front Suspension				
620-1D8	13,300# TAPERLEAF FRONT SUSPENSION	75		\$313.00
619-005	MAINTENANCE FREE RUBBER BUSHINGS - FRONT SUSPENSION			STD
410-001	FRONT SHOCK ABSORBERS			STD
Rear Axle and Equipment				
420-1K3	MT-40-14X 40,000# R-SERIES TANDEM REAR AXLE		2,500	\$9,922.00
421-586	5.86 REAR AXLE RATIO			N/C
424-001	IRON REAR AXLE CARRIER WITH STANDARD AXLE HOUSING			STD
386-073	MXL 17T MERITOR EXTENDED LUBE MAIN DRIVELINE WITH HALF ROUND YOKES			\$141.00
388-073	MXL 17T MERITOR EXTENDED LUBE INTERAXLE DRIVELINE WITH HALF ROUND YOKES			N/C
878-045	(1) INTERAXLE LOCK VALVE FOR TANDEM DRIVE AXLES			N/C
87A-005	INDICATOR LIGHT FOR EACH INTERAXLE LOCKOUT SWITCH			N/C
423-020	MERITOR 16.5X7 Q+ CAST SPIDER CAM REAR BRAKES, DOUBLE ANCHOR, FABRICATED SHOES			\$26.00
433-002	NON-ASBESTOS REAR BRAKE LINING			STD
434-005	BRAKE CAMS AND CHAMBERS ON FORWARD SIDE OF DRIVE AXLE(S) WITH AUXILIARY SUPPORT BRACKETS			STD
451-001	CAST IRON OUTBOARD REAR BRAKE DRUMS		-20	STD
425-002	REAR BRAKE DUST SHIELDS		10	\$130.00
440-006	REAR OIL SEALS			STD
426-101	WABCO TRISTOP D LONGSTROKE 2-DRIVE AXLE SPRING PARKING CHAMBERS		20	N/C
428-002	MERITOR AUTOMATIC REAR SLACK ADJUSTERS			STD
41T-002	CURRENT AVAILABLE SYNTHETIC 75W-90 REAR AXLE LUBE			STD



Prepared for:
 Ric Simon
 FALCON ASPHALT REPAIR
 EQUIPMENT
 2600 W Salzburg Road
 Freeland, MI 48623
 Phone: 989-495-9332

Prepared by:
 Mike Denno
 D & K TRUCK COMPANY
 3020 Snow Rd
 LANSING, MI 48917
 Phone: 517-449-2329
 Mobile:
 E-Mail: mdenno@dktruck.com

Data Code	Description	Weight Front	Weight Rear	Retail Price
Rear Suspension				
622-218	AIRLINER 40,000# EXTRA DUTY REAR SUSPENSION		255	\$1,272.00
621-007	AIRLINER HIGH POSITION RIDE HEIGHT			STD
431-005	RESTRAINED AXLE SEATS IN AXLE CLAMP GROUP			STD
624-016	51 INCH AXLE SPACING			N/C
888-078	IGNITION CONTROLLED ELECTRIC DUMP SWITCH FOR AIR SUSPENSION WITH STATE RETENTION AND GAUGE			\$147.00
87D-012	REAR AIR SUSPENSION DUMP VALVE AUTOFILL >5 MPH WITH INDICATOR LIGHT			N/C
910-001	SINGLE AIR REAR SUSPENSION LEVELING VALVE			STD
623-002	TRANSVERSE CONTROL RODS			STD
439-005	REAR SHOCK ABSORBERS - TWO AXLES (TANDEM) (AIR RIDE SUSPENSION)			N/C
Pusher / Tag Equipment				
429-998	NO PUSHER/TAG BRAKE DUST SHIELDS			STD
Brake System				
018-002	AIR BRAKE PACKAGE			STD
490-100	WABCO 4S/4M ABS			(\$166.00)
871-001	REINFORCED NYLON, FABRIC BRAID AND WIRE BRAID CHASSIS AIR LINES			STD
904-001	FIBER BRAID PARKING BRAKE HOSE			STD
412-001	STANDARD BRAKE SYSTEM VALVES			STD
46D-002	STANDARD AIR SYSTEM PRESSURE PROTECTION SYSTEM			STD
413-002	STD U.S. FRONT BRAKE VALVE			STD
432-003	RELAY VALVE WITH 5-8 PSI CRACK PRESSURE, NO REAR PROPORTIONING VALVE			STD
480-088	WABCO SYSTEM SAVER HP WITH INTEGRAL AIR GOVERNOR AND HEATER			STD
483-004	WABCO OIL COALESCING FILTER FOR AIR DRYER			\$11.00
479-012	AIR DRYER MOUNTED UNDER HOOD			N/C
460-1AU	STEEL AIR TANKS MOUNTED AFT INSIDE AND/OR BELOW FRAME JUST FORWARD OF REAR SUSPENSION, NO TRIPLE OR TORPEDO TANKS			\$16.00
477-004	PULL CABLES ON ALL AIR RESERVOIR(S)			\$3.00



Prepared for:
 Ric Simon
 FALCON ASPHALT REPAIR
 EQUIPMENT
 2600 W Salzburg Road
 Freeland, MI 48623
 Phone: 989-495-9332

Prepared by:
 Mike Denno
 D & K TRUCK COMPANY
 3020 Snow Rd
 LANSING, MI 48917
 Phone: 517-449-2329
 Mobile:
 E-Mail: mdenno@dktruck.com

Data Code	Description	Weight Front	Weight Rear	Retail Price
Trailer Connections				
481-998	NO TRAILER AIR HOSE			STD
476-998	NO AIR HOSE HANGER			STD
310-998	NO TRAILER ELECTRICAL CABLE			STD
Wheelbase & Frame				
545-507	5075MM (200 INCH) WHEELBASE			N/C
546-100	11/32X3-1/2X10-3/16 INCH STEEL FRAME (8.73MMX258.8MM/0.344X10.19 INCH) 120KSI	100	90	\$413.00
552-039	1825MM (72 INCH) REAR FRAME OVERHANG			N/C
55W-007	FRAME OVERHANG RANGE: 71 INCH TO 80 INCH	-20	90	N/C
AC8-99D	CALC'D BACK OF CAB TO REAR SUSP C/L (CA) : 134.25 in			
AE8-99D	CALCULATED EFFECTIVE BACK OF CAB TO REAR SUSPENSION C/L (CA) : 131.25 in			
AE4-99D	CALC'D FRAME LENGTH - OVERALL : 310.68 in			
FSS-0LH	CALCULATED FRAME SPACE LH SIDE : 74.79 in			N/C
FSS-0RH	CALCULATED FRAME SPACE RH SIDE : 76.88 in			N/C
553-001	SQUARE END OF FRAME			STD
550-001	FRONT CLOSING CROSSMEMBER			STD
559-001	STANDARD WEIGHT ENGINE CROSSMEMBER			STD
561-001	STANDARD CROSSMEMBER BACK OF TRANSMISSION			STD
562-001	STANDARD MIDSHIP #1 CROSSMEMBER(S)			STD
572-001	STANDARD REARMOST CROSSMEMBER			STD
565-002	HEAVY DUTY SUSPENSION CROSSMEMBER		30	N/C
Chassis Equipment				
556-1AP	THREE-PIECE 14 INCH PAINTED STEEL BUMPER WITH COLLAPSIBLE ENDS	30		\$65.00
558-001	FRONT TOW HOOKS - FRAME MOUNTED	15		\$74.00
574-011	SINGLE LICENSE PLATE BUMPER MOUNTING ON LH SIDE			STD
585-042	BETTS B-25 PAINTED MUDFLAP BRACKETS		15	\$75.00
590-001	BLACK MUDFLAPS		15	\$42.00
586-024	FENDER AND FRONT OF HOOD MOUNTED FRONT MUDFLAPS			STD
551-007	GRADE 8 THREADED HEX HEADED FRAME FASTENERS			STD



Prepared for:
 Ric Simon
 FALCON ASPHALT REPAIR
 EQUIPMENT
 2600 W Salzburg Road
 Freeland, MI 48623
 Phone: 989-495-9332

Prepared by:
 Mike Denno
 D & K TRUCK COMPANY
 3020 Snow Rd
 LANSING, MI 48917
 Phone: 517-449-2329
 Mobile:
 E-Mail: mdenno@dktruck.com

Data Code	Description	Weight Front	Weight Rear	Retail Price
44Z-005	EXTERIOR HARNESSSES WRAPPED IN ABRASION TAPE, SECONDARY COVERING, & CONNECTOR PROTECTION			\$945.00
607-001	CLEAR FRAME RAILS FROM BACK OF CAB TO FRONT REAR SUSPENSION BRACKET, BOTH RAILS OUTBOARD			\$218.00
Fifth Wheel				
578-998	NO FIFTH WHEEL			STD
Fuel Tanks				
204-215	50 GALLON/189 LITER SHORT RECTANGULAR ALUMINUM FUEL TANK - LH	20		\$348.00
218-005	RECTANGULAR FUEL TANK(S)			STD
215-005	PLAIN ALUMINUM/PAINTED STEEL FUEL/HYDRAULIC TANK(S) WITH PAINTED BANDS			STD
212-007	FUEL TANK(S) FORWARD			STD
232-510	10 GALLONS ADDITIONAL FUEL			\$100.00
664-003	BLACK STEP FINISH			N/C
205-001	FUEL TANK CAP(S)			STD
122-1J1	DETROIT FUEL/WATER SEPARATOR WITH WATER IN FUEL SENSOR, HAND PRIMER AND 12 VOLT PREHEATER"	-5		\$59.00
216-020	EQUIFLO INBOARD FUEL SYSTEM			STD
20E-004	AUXILIARY FUEL SUPPLY AND RETURN PORTS LOCATED ON LH FUEL TANK			\$22.00
202-016	HIGH TEMPERATURE REINFORCED NYLON FUEL LINE			STD
Tires				
093-1YX	CONTINENTAL HSC3 11R22.5 16 PLY RADIAL FRONT TIRES	48		(\$200.00)
094-12P	CONTINENTAL HDR2+ 11R22.5 14 PLY RADIAL REAR TIRES		184	(\$824.00)
Hubs				
418-060	CONMET PRESET PLUS PREMIUM IRON FRONT HUBS			STD
450-060	CONMET PRESET PLUS PREMIUM IRON REAR HUBS			STD
Wheels				
502-753	MAXION WHEELS 91262 22.5X8.25 10-HUB PILOT 6.20 INSET 5-HAND STEEL DISC FRONT WHEELS	10		(\$4.00)



Prepared for:
 Ric Simon
 FALCON ASPHALT REPAIR
 EQUIPMENT
 2600 W Salzburg Road
 Freeland, MI 48623
 Phone: 989-495-9332

Prepared by:
 Mike Denno
 D & K TRUCK COMPANY
 3020 Snow Rd
 LANSING, MI 48917
 Phone: 517-449-2329
 Mobile:
 E-Mail: mdenno@dktruck.com

Data Code	Description	Weight Front	Weight Rear	Retail Price
505-753	MAXION WHEELS 91262 22.5X8.25 10-HUB PILOT 5-HAND STEEL DISC REAR WHEELS		40	(\$16.00)
496-011	FRONT WHEEL MOUNTING NUTS			STD
497-011	REAR WHEEL MOUNTING NUTS			STD
Cab Exterior				
829-071	106 INCH BBC FLAT ROOF ALUMINUM CONVENTIONAL CAB			STD
650-008	AIR CAB MOUNTING			\$97.00
648-002	NONREMOVABLE BUGSCREEN MOUNTED BEHIND GRILLE			\$36.00
678-001	LH AND RH GRAB HANDLES			STD
646-045	MOLD-IN COLOR GRILLE			STD
65X-011	MOLD-IN COLOR HOOD MOUNTED AIR INTAKE GRILLE			STD
644-004	FIBERGLASS HOOD			STD
690-002	TUNNEL/FIREWALL LINER			STD
727-066	DUAL 26 INCH RECTANGULAR POLISHED ALUMINUM AIR HORNS ROOF MOUNTED	8		\$185.00
726-001	SINGLE ELECTRIC HORN			STD
728-002	DUAL HORN SHIELDS			N/C
575-001	REAR LICENSE PLATE MOUNT END OF FRAME			STD
312-043	INTEGRAL HEADLIGHT/MARKER ASSEMBLY			STD
302-047	LED AERODYNAMIC MARKER LIGHTS			STD
311-998	NO DAYTIME RUNNING LIGHTS			(\$21.00)
294-1AY	INTEGRAL LED STOP/TAIL/BACKUP LIGHTS			\$175.00
300-015	STANDARD FRONT TURN SIGNAL LAMPS			STD
744-1BK	DUAL WEST COAST MOLDED-IN COLOR HEATED MIRRORS WITH LH AND RH REMOTE			STD
797-001	DOOR MOUNTED MIRRORS			STD
796-001	102 INCH EQUIPMENT WIDTH			STD
743-1AP	LH AND RH 8 INCH MOLDED-IN COLOR CONVEX MIRRORS MOUNTED UNDER PRIMARY MIRRORS			STD
729-001	STANDARD SIDE/REAR REFLECTORS			STD
677-055	RH AFTERTREATMENT SYSTEM CAB ACCESS WITH POLISHED DIAMOND PLATE COVER			\$81.00
764-010	COMPOSITE EXTERIOR SUN VISOR	10		\$280.00
768-043	63X14 INCH TINTED REAR WINDOW			STD
661-003	TINTED DOOR GLASS LH AND RH WITH TINTED NON-OPERATING WING WINDOWS			STD



Prepared for:
 Ric Simon
 FALCON ASPHALT REPAIR
 EQUIPMENT
 2600 W Salzburg Road
 Freeland, MI 48623
 Phone: 989-495-9332

Prepared by:
 Mike Denno
 D & K TRUCK COMPANY
 3020 Snow Rd
 LANSING, MI 48917
 Phone: 517-449-2329
 Mobile:
 E-Mail: mdenno@dktruck.com

Data Code	Description	Weight Front	Weight Rear	Retail Price
654-011	RH AND LH ELECTRIC POWERED WINDOWS			STD
663-013	1-PIECE SOLAR GREEN GLASS WINDSHIELD			STD
659-019	2 GALLON WINDSHIELD WASHER RESERVOIR WITHOUT FLUID LEVEL INDICATOR, FRAME MOUNTED			STD
Cab Interior				
055-017	PROFESSIONAL TRIM PACKAGE			STD
707-105	MIST AND CARBON CLOTH INTERIOR "PROFESSIONAL"			STD
70K-016	CARBON WITH BASE BLACK ACCENT			STD
706-013	MOLDED PLASTIC DOOR PANEL			STD
708-013	MOLDED PLASTIC DOOR PANEL			STD
772-006	BLACK MATS WITH SINGLE INSULATION			STD
785-026	(1)DASH MOUNTED 12V POWER OUTLET, (1)DASH MOUNTED DUAL USB-C OUTLET			\$42.00
691-001	FORWARD ROOF MOUNTED CONSOLE			STD
693-035	LH AND RH KICKPLATES			\$131.00
738-021	DIGITAL ALARM CLOCK IN DRIVER DISPLAY			STD
742-007	(2) CUP HOLDERS LH AND RH DASH			STD
680-029	M2/SD DASH			STD
720-002	2-1/2 LB. FIRE EXTINGUISHER	5		\$37.00
700-002	HEATER, DEFROSTER AND AIR CONDITIONER			STD
701-001	STANDARD HVAC DUCTING			STD
703-005	MAIN HVAC CONTROLS WITH RECIRCULATION SWITCH			STD
170-015	STANDARD HEATER PLUMBING			STD
130-041	VALEO HEAVY DUTY A/C REFRIGERANT COMPRESSOR			STD
702-002	BINARY CONTROL, R-134A			STD
739-033	STANDARD INSULATION			STD
285-013	SOLID-STATE CIRCUIT PROTECTION AND FUSES			STD
280-007	12V NEGATIVE GROUND ELECTRICAL SYSTEM			STD
324-1B3	STANDARD LED CAB LIGHTING			STD
787-998	NO SECURITY DEVICE			(\$300.00)
657-001	DOOR LOCKS AND IGNITION SWITCH KEYED THE SAME			STD
78G-004	KEY QUANTITY OF 4			\$18.00
655-005	LH AND RH ELECTRIC DOOR LOCKS			STD
722-002	TRIANGULAR REFLECTORS WITHOUT FLARES	10		\$31.00



Prepared for:
 Ric Simon
 FALCON ASPHALT REPAIR
 EQUIPMENT
 2600 W Salzburg Road
 Freeland, MI 48623
 Phone: 989-495-9332

Prepared by:
 Mike Denno
 D & K TRUCK COMPANY
 3020 Snow Rd
 LANSING, MI 48917
 Phone: 517-449-2329
 Mobile:
 E-Mail: mdenno@dktruck.com

Data Code	Description	Weight Front	Weight Rear	Retail Price
756-338	BASIC ISRINGHAUSEN HIGH BACK AIR SUSPENSION DRIVERS SEAT WITH MECHANICAL LUMBAR AND INTEGRATED CUSHION EXTENSION	30		\$167.00
760-343	2 MAN TOOL BOX MID BACK NON SUSPENSION PASSENGER SEAT, SEATS INC	20		\$308.00
759-007	DUAL DRIVER SEAT ARMRESTS, NO PASSENGER SEAT ARMRESTS	4		\$67.00
711-004	LH AND RH INTEGRAL DOOR PANEL ARMRESTS			STD
758-022	BLACK MORDURA CLOTH DRIVER SEAT COVER			\$21.00
761-023	BLACK MORDURA CLOTH PASSENGER SEAT COVER			\$22.00
763-101	BLACK SEAT BELTS			STD
532-002	ADJUSTABLE TILT AND TELESCOPING STEERING COLUMN			STD
540-044	4-SPOKE 18 INCH (450MM) BLACK STEERING WHEEL WITH SWITCHES			STD
765-002	DRIVER AND PASSENGER INTERIOR SUN VISORS			STD

Instruments & Controls

106-002	ELECTRONIC ACCELERATOR CONTROL			STD
734-024	INTEGRATED UPPER & LOWER STORAGE PANELS			STD
870-001	BLACK GAUGE BEZELS			STD
486-001	LOW AIR PRESSURE INDICATOR LIGHT AND AUDIBLE ALARM			STD
840-001	DUAL NEEDLE PRIMARY AND SECONDARY AIR PRESSURE GAUGE			STD
198-003	DASH MOUNTED AIR RESTRICTION INDICATOR WITH GRADUATIONS			\$25.00
149-015	ELECTRONIC CRUISE CONTROL WITH CONTROLS ON STEERING WHEEL SPOKES			STD
156-007	KEY OPERATED IGNITION SWITCH AND INTEGRAL START POSITION; 4 POSITION OFF/RUN/START/ACCESSORY			STD
811-044	PREMIUM INSTRUMENT CLUSTER WITH 5.0 INCH TFT COLOR DISPLAY			STD
81B-003	DIGITAL PANEL LAMP DIMMER SWITCH IN DRIVER DISPLAY			STD
160-038	HEAVY DUTY ONBOARD DIAGNOSTICS INTERFACE CONNECTOR LOCATED BELOW LH DASH			STD
844-001	2 INCH ELECTRIC FUEL GAUGE			STD



Prepared for:
 Ric Simon
 FALCON ASPHALT REPAIR
 EQUIPMENT
 2600 W Salzburg Road
 Freeland, MI 48623
 Phone: 989-495-9332

Prepared by:
 Mike Denno
 D & K TRUCK COMPANY
 3020 Snow Rd
 LANSING, MI 48917
 Phone: 517-449-2329
 Mobile:
 E-Mail: mdenno@dktruck.com

Data Code	Description	Weight Front	Weight Rear	Retail Price
4C0-998	NO ADDITIONAL EXTRA SWITCH ACCUATORS			STD
856-001	ELECTRICAL ENGINE COOLANT TEMPERATURE GAUGE			STD
864-022	DIGITAL TRANSMISSION OIL TEMPERATURE IN DRIVER DISPLAY			STD
867-004	ELECTRONIC OUTSIDE TEMPERATURE SENSOR DISPLAY IN DRIVER MESSAGE CENTER			STD
830-017	ENGINE AND TRIP HOUR METERS INTEGRAL WITHIN DRIVER DISPLAY			STD
372-123	PTO CONTROLS FOR ENHANCED VEHICLE ELECTRIC/ELECTRONIC ARCHITECTURE			\$40.00
736-998	NO OBSTACLE DETECTION SYSTEM			(\$4,324.00)
72J-998	NO DR ASSIST SYSTEM			(\$32.00)
49B-998	NO VEHICLE STABILITY ADVISOR OR CONTROL			(\$1,134.00)
73B-998	NO LANE DEPARTURE WARNING SYSTEM			(\$1,080.00)
852-002	ELECTRIC ENGINE OIL PRESSURE GAUGE			STD
746-137	AM/FM/WB WORLD TUNER RADIO WITH BLUETOOTH, USB AND AUXILIARY INPUTS, J1939			STD
747-001	DASH MOUNTED RADIO			STD
750-002	(2) RADIO SPEAKERS IN CAB			STD
753-998	NO AM/FM RADIO ANTENNA			(\$47.00)
748-006	POWER AND GROUND WIRING PROVISION OVERHEAD			\$18.00
749-001	ROOF/OVERHEAD CONSOLE CB RADIO PROVISION			\$55.00
752-017	MULTI-BAND AM/FM/WB/CB LH MIRROR MOUNTED ANTENNA SYSTEM			\$194.00
74D-006	STANDARD RADIO WIRING WITH STEERING WHEEL CONTROLS			STD
810-027	ELECTRONIC MPH SPEEDOMETER WITH SECONDARY KPH SCALE, WITHOUT ODOMETER			STD
817-001	STANDARD VEHICLE SPEED SENSOR			STD
812-001	ELECTRONIC 3000 RPM TACHOMETER			STD
813-1C8	DETROIT CONNECT PLATFORM HARDWARE			STD
8D1-303	3 YEARS DAIMLER CONNECTIVITY BASE PACKAGE (FEATURES VARY BY MODEL) POWERED BY DETROIT CONNECT			STD
6TS-005	TMC RP1226 ACCESSORY CONNECTOR LOCATED BEHIND PASSENGER SIDE REMOVEABLE DASH PANEL			STD



Prepared for:
 Ric Simon
 FALCON ASPHALT REPAIR
 EQUIPMENT
 2600 W Salzburg Road
 Freeland, MI 48623
 Phone: 989-495-9332

Prepared by:
 Mike Denno
 D & K TRUCK COMPANY
 3020 Snow Rd
 LANSING, MI 48917
 Phone: 517-449-2329
 Mobile:
 E-Mail: mdenno@dktruck.com

Data Code	Description	Weight Front	Weight Rear	Retail Price
162-002	IGNITION SWITCH CONTROLLED ENGINE STOP			STD
329-136	THREE EXTRA HARDWIRED SWITCHES IN DASH, ROUTE TO END OF FRAME, BLUNTCUT			\$190.00
4C1-009	HARDWIRE SWITCH #1, ON/OFF/ON MOMENTARY, 20 AMPS IGNITION POWER			\$15.00
4C2-025	HARDWIRE SWITCH #2, ON/OFF LATCHING, 20 AMPS IGNITION POWER			\$15.00
4C3-005	HARDWIRE SWITCH #3, ON/OFF MOMENTARY, 20 AMPS IGNITION POWER			\$15.00
81Y-005	PRE-TRIP INSPECTION FEATURE FOR EXTERIOR LAMPS ONLY			\$12.00
264-030	(1) OVERHEAD MOUNTED LANYARD CONTROL FOR DRIVER AIR HORN			(\$23.00)
883-998	NO TRAILER HAND CONTROL BRAKE VALVE			STD
842-006	DIGITAL TURBO AIR PRESSURE IN DRIVER DISPLAY			N/C
836-015	DIGITAL VOLTAGE DISPLAY INTEGRAL WITH DRIVER DISPLAY			STD
660-008	SINGLE ELECTRIC WINDSHIELD WIPER MOTOR WITH DELAY			STD
304-030	ROTARY HEADLAMP SWITCH, MARKER LIGHTS/HEADLIGHTS SWITCH WITH PULL OUT FOR OPTIONAL FOG/ROAD LAMPS			N/C
882-009	ONE VALVE PARKING BRAKE SYSTEM WITH WARNING INDICATOR			STD
299-020	SELF CANCELING TURN SIGNAL SWITCH WITH DIMMER, HEADLAMP FLASH, WASH/WIPE/INTERMITTENT			STD
298-046	INTEGRAL ELECTRONIC TURN SIGNAL FLASHER WITH 40 AMP (20 AMP PER SIDE) TRAILER LAMP CAPACITY			STD

Design

065-000	PAINT: ONE SOLID COLOR			STD
---------	------------------------	--	--	-----

Color

980-5F6	CAB COLOR A: L0006EY WHITE ELITE EY			STD
986-020	BLACK, HIGH SOLIDS POLYURETHANE CHASSIS PAINT			STD
962-972	POWDER WHITE (N0006EA) FRONT WHEELS/RIMS (PKWHT21, TKWHT21, W, TW)			STD
966-972	POWDER WHITE (N0006EA) REAR WHEELS/RIMS (PKWHT21, TKWHT21, W, TW)			STD
964-6Z7	BUMPER PAINT: FP24812 ARGENT SILVER DUPONT FLEX			STD



Prepared for:
 Ric Simon
 FALCON ASPHALT REPAIR
 EQUIPMENT
 2600 W Salzburg Road
 Freeland, MI 48623
 Phone: 989-495-9332

Prepared by:
 Mike Denno
 D & K TRUCK COMPANY
 3020 Snow Rd
 LANSING, MI 48917
 Phone: 517-449-2329
 Mobile:
 E-Mail: mdenno@dktruck.com

Data Code	Description	Weight Front	Weight Rear	Retail Price
976-995	SUNVISOR PAINTED SAME AS CAB COLOR A			N/C
969-998	NO CAB/BODY EXTERIOR DECALS			STD
963-003	STANDARD E COAT/UNDERCOATING			STD

Certification / Compliance

996-001	U.S. FMVSS CERTIFICATION, EXCEPT SALES CABS AND GLIDER KITS			STD
---------	---	--	--	-----

Weight Summary

	Weight Front	Weight Rear	Total Weight
Factory Weight ⁺	6997 lbs	6794 lbs	13791 lbs
Dealer Installed Options	0 lbs	0 lbs	0 lbs
Total Weight⁺	6997 lbs	6794 lbs	13791 lbs

Dealer Installed Options

		Weight Front	Weight Rear	Price
PREP	DEALER PRE DELIVERY INSPECTION	0	0	\$500.00
MATS	FLOOR MATS	0	0	\$50.00
Total Dealer Installed Options		0 lbs	0 lbs	\$550.00

(+) Weights shown are estimates only.

If weight is critical, contact Customer Application Engineering.

(**) Prices shown do not include taxes, fees, etc... "Net Equipment Selling Price" is located on the Quotation Details Proposal Report.

(***) All cost increases for major components (Engines, Transmissions, Axles, Front and Rear Tires) and government mandated requirements, tariffs, and raw material surcharges will be passed through and added to factory invoices.



Prepared for:
 Ric Simon
 FALCON ASPHALT REPAIR
 EQUIPMENT
 2600 W Salzburg Road
 Freeland, MI 48623
 Phone: 989-495-9332

Prepared by:
 Mike Denno
 D & K TRUCK COMPANY
 3020 Snow Rd
 LANSING, MI 48917
 Phone: 517-449-2329
 Mobile:
 E-Mail: mdenno@dktruck.com

D I M E N S I O N S

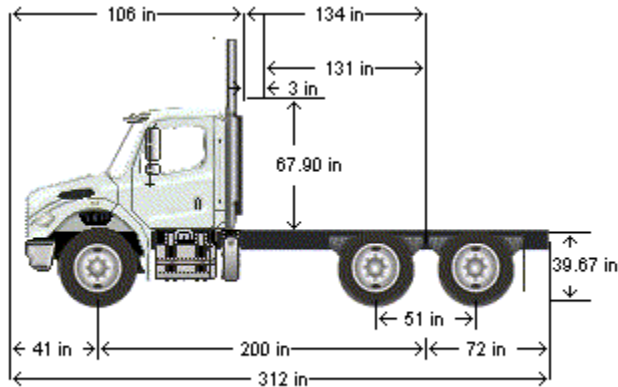


TABLE SUMMARY - DIMENSIONS

Dimensions	Inches
Bumper to Back of Cab (BBC)	106.3
Bumper to Centerline of Front Axle (BA)	40.7
Front Axle to Back of Cab (AC)	65.6
Min. Cab to Body Clearance (CB)	3.0
Back of Cab to Centerline of Rear Axle(s) (CA)	134.3
Effective Back of Cab to Centerline of Rear Axle(s) (Effective CA)	131.3
Back of Cab Protrusions (Exhaust/Intake) (CP)	2.0
Back of Cab Protrusions (Side Extenders/Trim Tab) (CP)	0.0
Back of Cab Protrusions (CNG Tank)	0.0
Back of Cab Clearance (CL)	3.0
Back of Cab to End of Frame	206.2
Cab Height (CH)	67.9
Wheelbase (WB)	199.8
Frame Overhang (OH)	71.9
Overall Frame Length	310.7
Overall Length (OAL)	312.5
Rear Axle Spacing	51.0
Unladen Frame Height at Centerline of Rear Axle	39.7

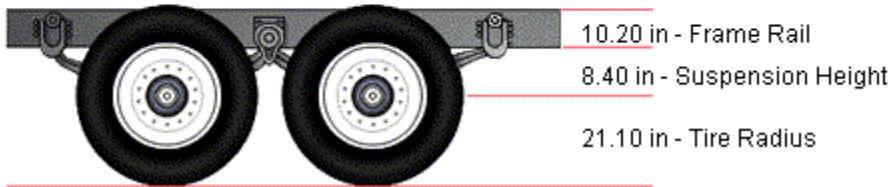
Performance calculations are estimates only. If performance calculations are critical, please contact Customer Application Engineering.

Prepared for:
 Ric Simon
 FALCON ASPHALT REPAIR
 EQUIPMENT
 2600 W Salzburg Road
 Freeland, MI 48623
 Phone: 989-495-9332

Prepared by:
 Mike Denno
 D & K TRUCK COMPANY
 3020 Snow Rd
 LANSING, MI 48917
 Phone: 517-449-2329
 Mobile:
 E-Mail: mdenno@dktruck.com

U N L A D E N F R A M E H E I G H T

Unladen Height	Requested	Calculated
Frame (in)	N/A	39.70



VEHICLE SPECIFICATIONS SUMMARY - UNLADEN FRAME HEIGHT

Model	M2106
Cab Size (829).....	106 INCH BBC FLAT ROOF ALUMINUM CONVENTIONAL CAB
Frame Rails (546).....	11/32X3-1/2X10-3/16 INCH STEEL FRAME (8.73MMX258.8MM/0.344X10.19 INCH) 120KSI(546)
Web Height (in).....	10.1875
Flange Thickness (in).....	0.34375
Rear Suspension (622).....	AIRLINER 40,000# EXTRA DUTY REAR SUSPENSION
Rear Suspension Ride Height (621).....	AIRLINER HIGH POSITION RIDE HEIGHT
Axle C/L to Bottom of Frame (in).....	8.383
Rear Tires (094)	CONTINENTAL HDR2+ 11R22.5 14 PLY RADIAL REAR TIRES
Unladen Radius (in)	21.1
Fifth Wheel (578)	NO FIFTH WHEEL
Requested Min Height (in)	0.0
Requested Max Height (in)	1
Fifth Wheel Leg Height (582)	NO FIFTH WHEEL LEG HEIGHT
Rear Tow Device (587).....	NO REAR TOWING DEVICE
Requested Min Height (in)	0.0
Requested Max Height (in)	0.0

Performance calculations are estimates only. If performance calculations are critical, please contact Customer Application Engineering.





NASPO PRICE QUOTE

No. 12132023-334

2600 W SALZBURG
FREELAND, MI 48623
Phone: (989) 495 – 9332
Fax: (989) 495 – 9342

Requested By: Midwest – Oak Park
Village of Oak Park
201 South Boulevard
Oak Park, IL 60302

Quote Date	Quote Good Through	Freight Terms	Requested By	Payment Terms
02/14/2024	02/29/2024	FOB Midland, MI	MPE	Net 30 Days

Qty	Item No	Description	Price
1		<p>8TTRK 8 TON Patch Truck Diesel Fired Dual Burner unit. Hydraulic loading and unloading doors Battery charger package Smart Control package including: voltmeter, VIP, 7-day timer, temperature gauge, hour meter, and diagnostic package. Dumping frame Onboard hydraulics - utilizing existing PTO Shovel apron Skirting kit and bumper Hopper access platform Platform railings Ladder - 2 step Tool box - lane side Pylon holders Tool holders Federal Signal lighting kit, including: stop/tail/turn/reverse, markers, arrow board, work lights for hopper, platform and rear of machine, and beacon. Additional loading door lever near truck cab Backup camera Fire extinguisher DOT reflective tape DOT compliance kit: flare, triangles, etc. Mounted on chassis</p> <p>Discount NASPO CONTRACT</p>	<p>\$150,094.00</p> <p>-\$15,009.00</p>

Paint Color Falcon Red	Included
Warranty Two Year Factory	Included
Falcon CCMFG 5 Year Combustion Chamber Maintenance Free Guaranty	Included
Manual Operator, Parts and Service Manual (Electronic)	Included
Training On-site Operation and Service Training	Included
Options	
0037 50-Gallon Heated/Insulated Tack Tank w/ Dedicated Burner - Gravity Feed Withdrawal Via Molasses Valve at the Bottom of the Tank (Same Burner Type as Hopper Burner(s) and For Water Based Tack or Rejuvenator Only)	\$9,072.00
0080 Spray System - Viking HL32 Pump, 10- Gallon Flush Tank and Spray Wand w/ 1/2" Hoses (For Water Based Tack or Rejuvenator Only and Requires Heated Tack Tank Option)	\$5,860.00
NJP0099g Electric wash down system with hose reel	\$2,246.00
NJP1099B Spoils Bin mounted on frame Curb Side	\$1,218.00
Discount NASPO CONTRACT	-\$1,840.00
Freight Oak Park, IL to Freeland, MI Round trip	\$1,350.00
PDI, TRAINING	\$2,700.00
M2 106 Plus Freightliner with 40,000# Tandem Rear Axle Per Emailed Spec labeled FalconMY2025 Oak Park	\$111,833.00
Plus Applicable Sales Tax	

Why Falcon?

It's Versatile

- Recycle leftover asphalt, chunks and millings (a dual burner unit is required to recycle millings)
- Transport asphalt and keep it hot all day and hold it overnight
- Heat and re-heat cold patch

It's Cost-Effective

- When used as a hot box, it eliminates asphalt waste that occurs in the back of an unheated truck bed
- When used as a recycler, it recycles leftover asphalt and asphalt chunks torn up from the pavement
- Independently certified 92% fuel efficiency – uses less than 3 gallons of fuel per 8-hour shift

It's Reliable

- VIP Technology (patent pending) – Protects burner components by automatically preventing burner from operating with low battery voltage
- A Falcon is designed to allow the burner to run while in tow - preventing material from cooling while being transported
- Heat management system is engineered to provide even hopper temperatures – eliminating material scorching from hot spots and material hardening from cold spots
- Standard 2-year machine warranty and lifetime frame warranty

It's a Falcon

Truck Chassis Availability is Q4 2024

Completed Truck Patcher delivery is Q1 2025

Order must be placed no later than February 29,2024

SUBTOTAL
TAX
TOTAL

\$267,524.00
\$0.00
\$267,524.00

Accepted By

Accepted Date

Portfolios > [Heavy Construction & Industrial Equipment](#) > Falcon

[Heavy Construction & Industrial Equipment](#)

Falcon

Scope

Pricing

[Download Model PA](#)

Heavy Construction & Industrial Equipment

Participating Addenda

State Participating Addenda 

How Local Public Entities and Other Eligible Entities Participate 

Give Feedback



Contractor Contact

Trish Bell
trish@falconrme.com
[248-860-6065](tel:248-860-6065)
www.falconrme.com

Awarded

Expiration

Renewal Limit

07/10/2023	07/09/2025	07/09/2028
------------	------------	------------

Documents/Details

Master Agreement Documents	+
Pricing Documents	+
Product Documents	+

Didn't find what you need [click here](#)

DISCLAIMER: The documents on the NASPO ValuePoint website are for informational/ convenience purposes only. Official documents are maintained by the lead state (or participating entity in the case of participating addenda). In the event of any conflict between the documents on this site and those maintained by the lead state or participating entity, the official documents maintained by the lead state or participating entity govern.

Please note that some documents may be absent or incorrect. Please send all feedback and suggestions for improvement to our website team at webmaster@NASPOValuePoint.org

Thank you.



**PARTICIPATION IN NASPO VALUEPOINT MASTER AGREEMENTS
BY
GOVERNMENTAL UNITS IN THE STATE OF ILLINOIS**

As the NASPO member from the State of Illinois, the Chief Procurement Officer for General Services (CPO-GS) has authorized NASPO ValuePoint to make NASPO ValuePoint contracts available to all authorized governmental units, except a governmental unit subject to the jurisdiction of a chief procurement officer (CPO) established in Section 10-20 of the Illinois Procurement Code, and qualified not-for-profit agencies in Illinois. Governmental units subject to the jurisdiction of a CPO may participate in NASPO ValuePoint contracts as directed by the CPO and the CPO-GS.

This notification was made in writing by email from the CPO-GS on December 27, 2018. The CPO-GS runs a joint and cooperative purchasing program called the Unified Procurement Program or UPP. Authorized governmental units and qualified not-for-profit agencies may utilize NASPO ValuePoint contracts when the CPO-GS has executed a participating addendum for statewide use. A list of qualified not-for-profit agencies may be found at https://www2.illinois.gov/cms/agency/stateuse/Documents/QNFP_Agencies.pdf.

The State of Illinois notified NASPO ValuePoint that each authorized governmental unit that is not subject to the jurisdiction of a CPO as identified above, including political subdivisions, have their own procurement authority. They may execute ValuePoint participating addendums with any current NASPO ValuePoint contractor provided the execution falls within the statutory procurement authority of the authorized governmental unit.

Scanned copies of all executed participating addendums are to be sent by email in PDF format to PA@NASPOValuePoint.org.

This authorization may be rescinded at any time by the CPO-GS.

Questions regarding this notice may be sent to the NASPO ValuePoint Cooperative Contract Coordinator Team by email at CCC@naspovaluepoint.org.

Effective Date: January 2, 2019 (Via Email)
Jeff Holden, Cooperative Contract Coordinator