

EXTERIOR FINISH LEGEND:

- 01. WOOD CLAD WINDOW W/ TRANSOM WINDOW
- 02. PRECAST STONE
- 03. MASONRY UNIT (COLOR #1)
- 04. PRECAST STONE BAND
- 05. MASONRY UNIT (COLOR #2)
- 06. METAL BALCONY
- 07. 4" STONE BAND
- 08. 4" STONE SILL
- 09. WOOD CLAD WINDOW
- 10. SLIDING DOOR W/ TRANSOM WINDOW
- 11. METAL GUARDRAIL
- 12. STONE CAP
- 13. 2" STONE BAND
- 14. PRECAST 10" x 6" STONE BAND
- 15. ALUMINUM COPING
- 16. WOOD CLAD WINDOW (AWNING)
- 17. ALUMINUM STOREFRONT DOOR
- 18. NEW WOOD CLAD SLIDER W/ TRANSOM WINDOW
- 19. NEW STOREFRONT DOOR
- 20. EXISTING 1 STORY MASONRY BUILDING TO REMAIN
- 21. BAY WINDOW BEYOND
- 22. WALL MOUNTED LIGHT FIXTURE
- 23. CEMENT BOARD PANELING SYSTEM
- 24. 12" PRECAST STONE HEADER
- 25. LOUVER FOR EXHAUST FAN (SEE MECHANICAL PLANS FOR DETAILS)
- 26. INSULATED OVERHEAD GARAGE DOOR
- 27. 60" ALUMINUM FENCE W/ 3' WIDE GATE
- 28. CANTILEVERED PREFABRICATED METAL BALCONY
- 29. 8" CEMENT BOARD SIDING



**John Conrad Schiess**  
Architect+LEED AP  
john@jcsarchitect.com  
708 366 1500

*office*  
400 Ashland Avenue  
River Forest, Illinois 60305

*studio*  
Oak Park, Illinois 60302

jcsarchitect.com

architecture +

John Conrad Schiess Architect, Ltd.

COPYRIGHT: John Conrad Schiess expressly reserves their common law copyright and other copyrights in these plans. These plans contain original material and ideas. These plans are not to be reproduced changed or copied in any form or manner whatsoever, nor are they to be assigned to any third party, without first obtaining the express written permission and consent of John Conrad Schiess.

I hereby certify that these plans were prepared under my direction and, to the best of my knowledge and belief, conform to the applicable Codes and Ordinances of the VILLAGE OF OAK PARK, Illinois.



Design Firm License No: 184.007511-0001  
Project No: 03212017

JAN. 18, 2019, REV. BLDG. PERMIT  
OCT. 1, 2018, BLDG. PERMIT + BID  
AUG. 23, 2018, BID

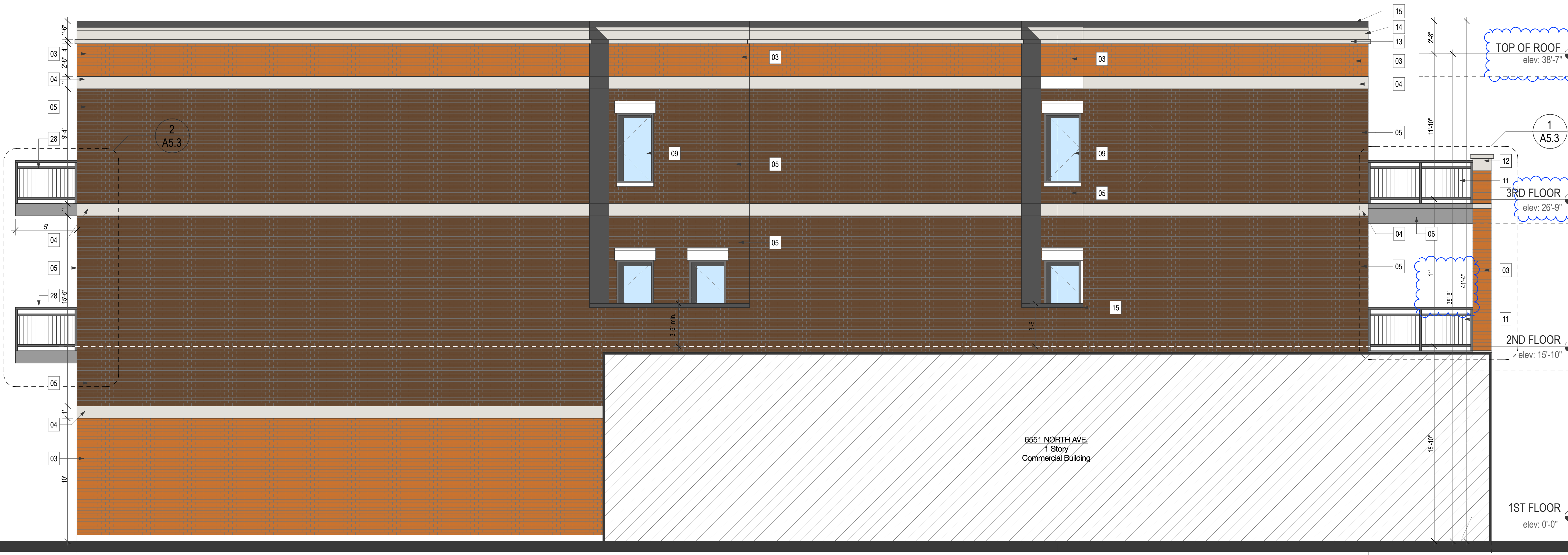
**THE RESIDENCES**  
at  
**NORTHEAST OP**  
6553-6557  
North Avenue  
Oak Park, Illinois

Sheet Title  
ELEVATIONS

**A3.4**

Sheet No.

A  
A4.1  
BUILDING SECTION



SEE SHEET A1.0  
FOUNDATION PLAN + DETAILS

SEE SHEET A1.0  
FOUNDATION PLAN + DETAILS

**EAST ELEVATION**  
SCALE: 1/4" = 1'-0"