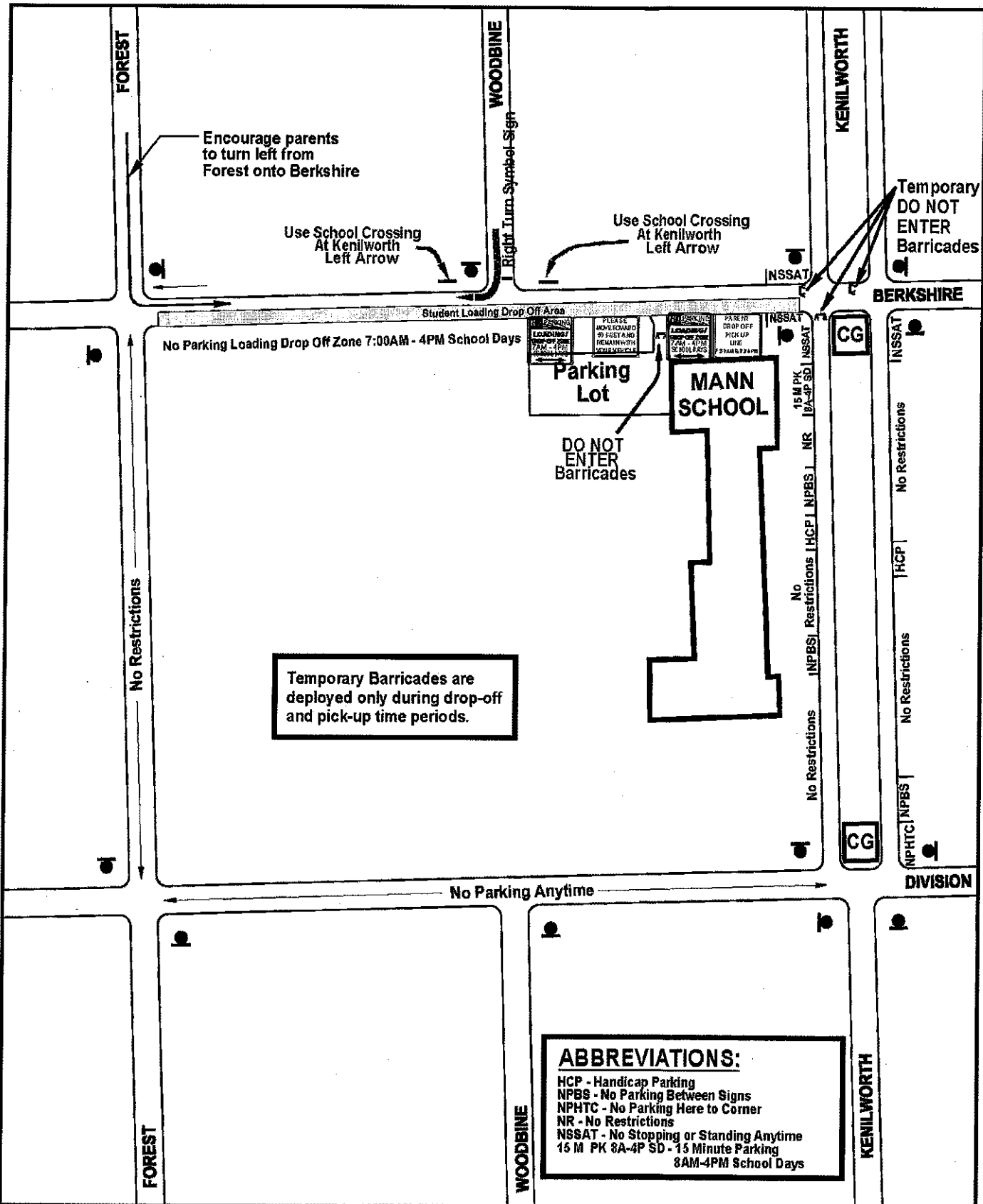


**Engineering Division**

Scale: 1" = Ft.  
 By: JAJ Date: 02/01/16

**Traffic Safety Plan  
 St Giles School and Church  
 Restrictions for Motor Vehicles**

Filename: J:\Parking\_Traffic\School Safety\St Giles School\St Giles School Traffic Plan.dc



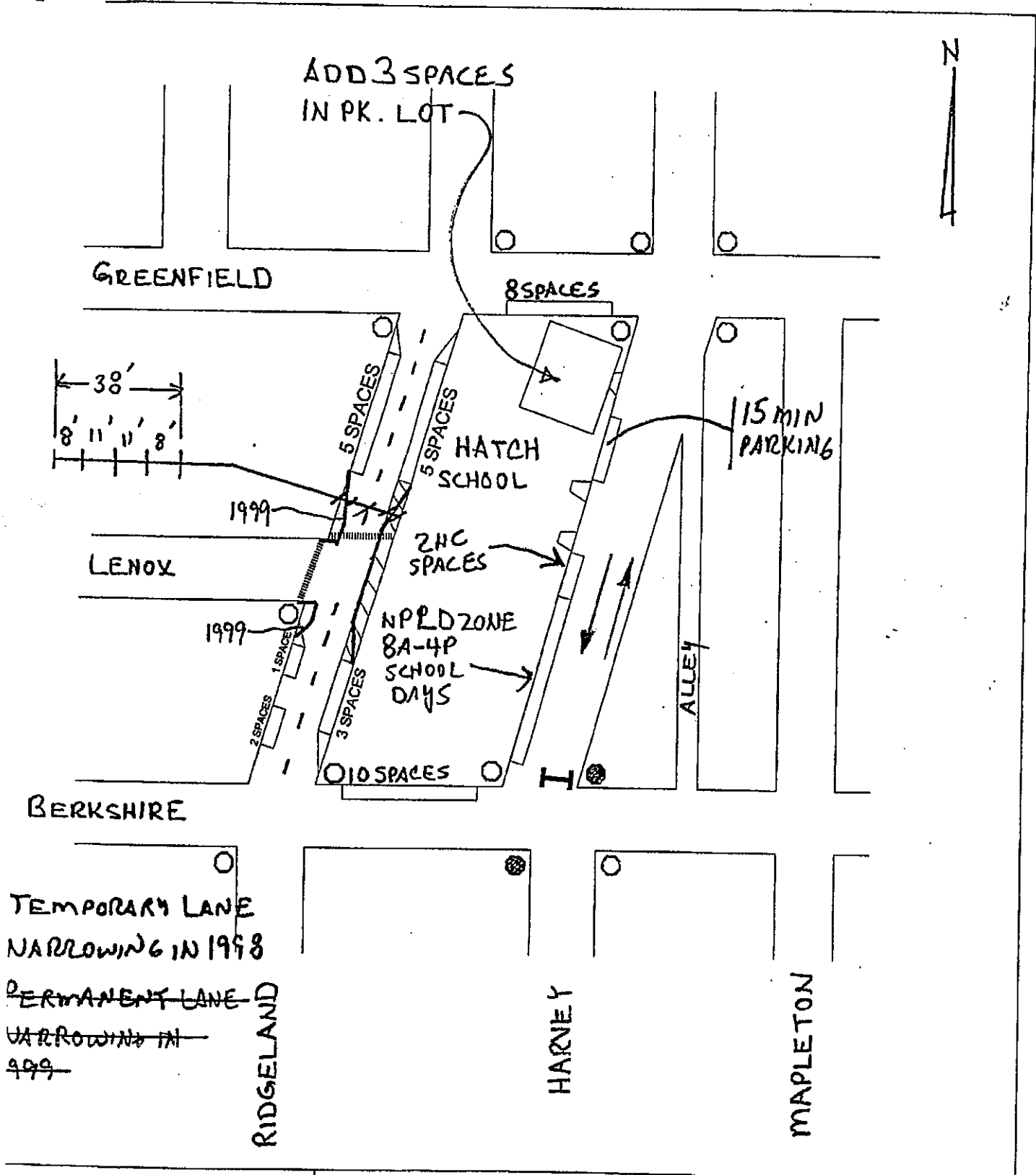
**ABBREVIATIONS:**  
 HCP - Handicap Parking  
 NPBS - No Parking Between Signs  
 NPHTC - No Parking Here to Corner  
 NR - No Restrictions  
 NSSAT - No Stopping or Standing Anytime  
 15 M PK 8A-4P SD - 15 Minute Parking  
 8AM-4PM School Days

Engineering  
 Division

Scale: 1" = Ft.  
 By: JAJ Date: 10/12/04

Mann School & Surrounding Area  
 Map of the Parking &  
 Traffic Restrictions

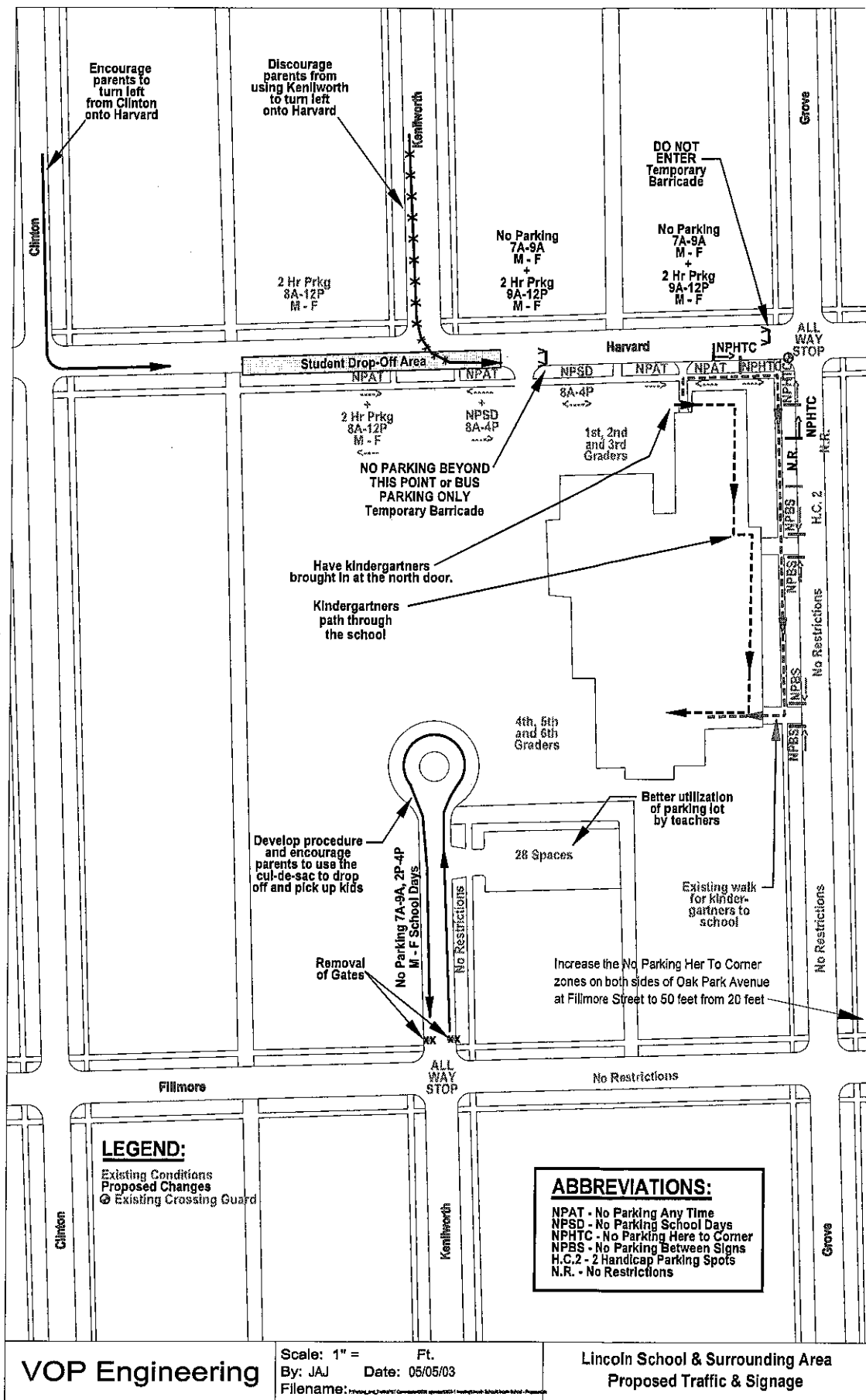
0498-2  
1.3  
2/2



VOP Engineering

Scale: 1" = Ft.  
By: MJK Date: 04/23/98  
Filename:  
D:\Data\VopMaps\Hatch2.dc

PROPOSED PEDESTRIAN AND  
TRAFFIC SAFETY IMPROVEMENTS  
AROUND HATCH SCHOOL



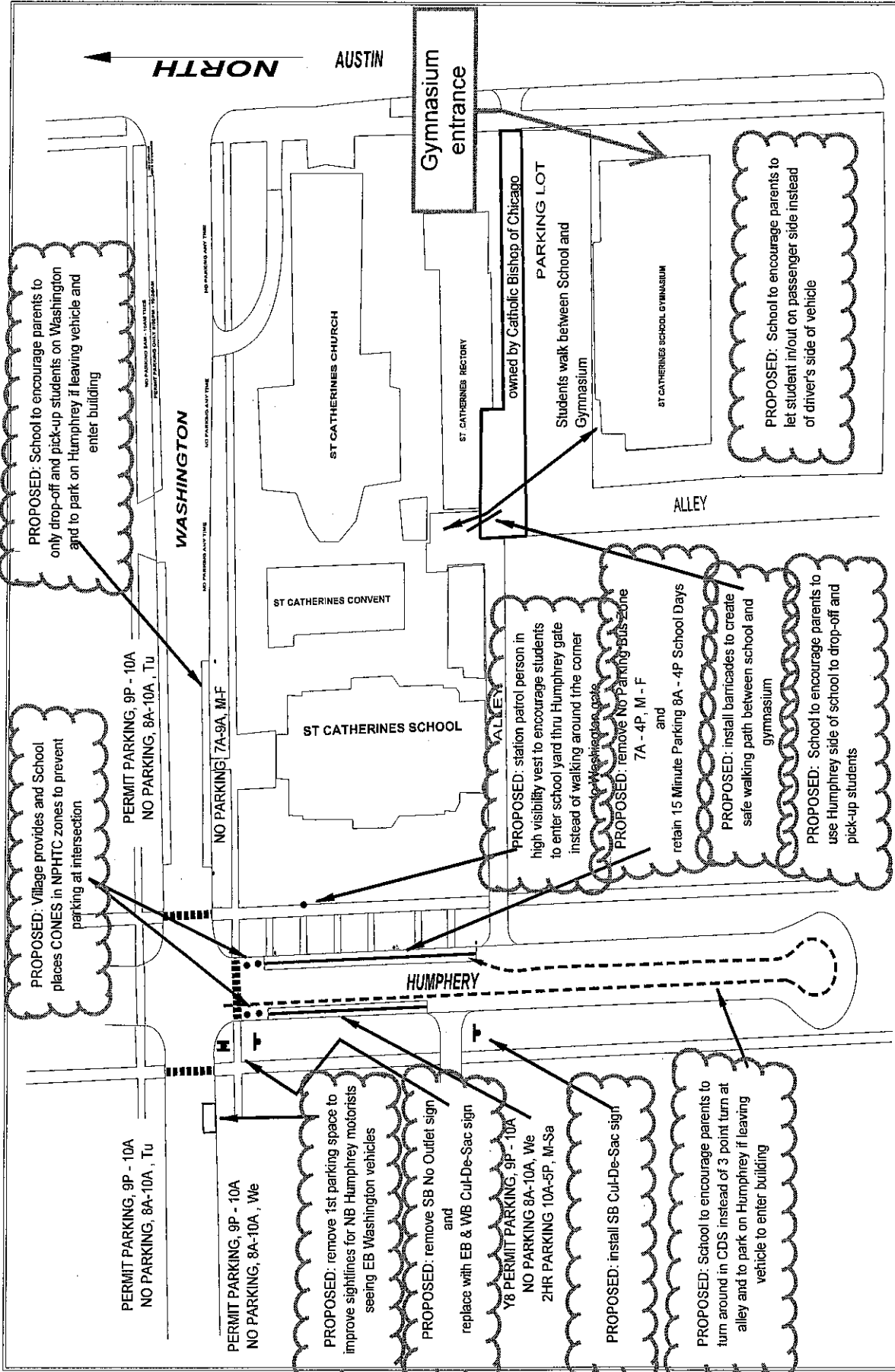
**LEGEND:**  
 Existing Conditions  
 Proposed Changes  
 Existing Crossing Guard

**ABBREVIATIONS:**  
 NPAT - No Parking Any Time  
 NPSD - No Parking School Days  
 NPHTC - No Parking Here to Corner  
 NPBS - No Parking Between Signs  
 H.C.2 - 2 Handicap Parking Spots  
 N.R. - No Restrictions

**VOP Engineering**

Scale: 1" = Ft.  
 By: JAJ Date: 05/05/03  
 Filename: Lincoln School & Surrounding Area Proposed Traffic & Signage.dwg

**Lincoln School & Surrounding Area  
 Proposed Traffic & Signage**



**TRAFFIC SAFETY PLAN**  
**ST CATHERINES SCHOOL**  
**LOADING / DROP OFF ZONE**

discussed with school on 04/14/2016

Scale: 1" = Ft.  
 By: JCK Date: 04/15/16

**Engineering Division**  
**Oak Park**

Filename: J:\Parking\_Traffic\SCHOOL SAFETY\ST Catherines School\ST Catherines Traffic Safety Plan 2016\041516.dwg