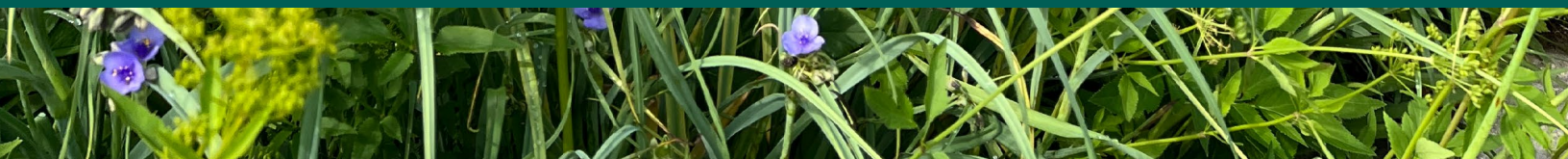




Biodiversity and Green Infrastructure Study and Plan

PREPARED FOR
Village of Oak Park
June 2025





Cover Letter

GREENPRINT PARTNERS

W/M/DBE

Dear Lindsey,

Greenprint Partners is pleased to submit our proposal for the Village of Oak Park's Biodiversity and Green Infrastructure Study and Plan. We are energized by the opportunity to build on the momentum of Climate Ready Oak Park by helping define, measure and expand the Village's green infrastructure (GI) and enhanced park management (EPM) assets in service of a thriving, climate-ready community.

With deep knowledge of Oak Park's current GI efforts — including managing the Climate Ready Rainscapes program and advising on schoolyard greening through the CASE Working Group — we are uniquely positioned to lead this effort. As the leading GI consulting firm in the Chicago region, we bring a rare combination of local fluency, regional leadership and interdisciplinary, in-house expertise. Our approach is implementation-ready from day one, grounded in deep relationships, technical rigor and a proven ability to move from vision to action. Our team brings the following strengths:

- **Deep experience in GI and land stewardship.** From native landscape design and biodiversity planning to stewardship-based maintenance and park retrofits, we've led hundreds of GI projects in Chicagoland and nationwide.
- **An integrated team, ready to deliver.** Our planners, landscape architects, engineers and engagement specialists work holistically to define, map and expand GI in ways that are technically sound, community informed and implementation ready.
- **Authentic partnership rooted in trust.** We are known for being responsive, collaborative and easy to work with. We don't just design plans — we co-create them with clients and communities, removing participation barriers and translating goals into lasting, on-the-ground impact.

We affirm that we are bound by the terms and conditions outlined in the RFP. Fresh Coast Capital (DBA Greenprint Partners) is a Limited Liability Company organized in the State of Delaware in 2014. Our principal office and mailing address is at 17 N. State Street, Suite 1400, Chicago, IL 60602. We employ 37 full-time staff and are in strong financial standing; we can provide evidence upon request. I am authorized to negotiate on behalf of the firm and will serve as our primary point of contact for this proposal.

We're excited to bring this plan to life with you — and to help Oak Park lead the way in community-centered GI and EPM.

Sincerely,



Nicole Chavas
President + Chief Operating Officer
(773) 612-2906, nchavas@greenprintpartners.com



Background



Background

Greenprint Partners is an interdisciplinary, community-centered firm dedicated to delivering sustainable infrastructure that drives lasting environmental and social impact. Through our integrated practice areas — **planning and engagement, landscape architecture, civil engineering, and program management** — we help clients transform vision into reality through built projects, action-ready plans and community-driven programs.

We bring deep experience across the full spectrum of GI, spanning green stormwater systems, native landscape design, biodiversity and habitat planning, and enhanced management of parks and open space. We lead planning, design and implementation efforts that are rooted in ecological function, aligned with community priorities and built for long-term success. As lead author of the [Equity Guide for Green Stormwater Infrastructure Practitioners](#) (Equity Guide), we bring a nationally recognized equity lens to every project, helping to surface overlooked assets, remove barriers to participation and create frameworks shaped by lived experience.

We are proud to be the leading GI planning firm in Chicagoland, evidenced by our involvement across multiple key projects:

- Developing the City of Chicago's 2025 Green Stormwater Infrastructure Strategy
- Co-designing and implementing Cook County's \$6M RainReady Calumet Corridor initiative
- Leading regional GI planning efforts from Milwaukee to South Suburban municipalities

This experience gives us a rare combination of policy fluency, technical depth and real-world implementation insight — all of which we bring to the Village of Oak Park.

At Greenprint, we are more than consultants — we are collaborators, advocates and champions for a vibrant, more resilient future.

“As our partners in creating the Chicago Green Stormwater Infrastructure Strategy, Greenprint brings deep knowledge of green infrastructure and a personalized project management plan that is tailored to our needs.

The Greenprint team builds strong, trusting relationships with key partners while also holding vast technical expertise. They are quick to respond to feedback and have the flexibility required when working alongside municipal entities. It has been a pleasure to work with them, and we highly recommend Greenprint for planning for more equitable green stormwater infrastructure.”

Jackie Rigley, Senior Water Policy Advisor
City of Chicago Department of Environment



Project Approach



Project Approach

Understanding

The Village of Oak Park has set a bold and admirable goal: ensuring that 30 percent of land in the community reflects green infrastructure (GI) and enhanced park management (EPM) practices by 2030. Achieving this target will necessitate clear definitions of GI and EPM and alignment with key institutions, major property owners and community members. It will also require a realistic and creative set of highly implementable strategies to reimagine public land, unlock new uses of underutilized and privately owned spaces, and galvanize residents to invest in the future of the Village's environmental health.

We understand this initiative as a convergence of four critical goals:

- 1. Clarify what “counts” as GI and EPM**, rooted in local values and biodiversity priorities
- 2. Establish scalable, credible methods of measurement** that balance technical rigor with feasibility
- 3. Center equity and access**, especially in dense areas where green space is limited and climate risks are concentrated
- 4. Lay the groundwork for action**, with concrete strategies and steps that are not only visionary but also fundable, implementable and consistent with partner and resident priorities

We approach this Plan as a chance to advance climate and biodiversity goals while deepening the Village's identity as a place where people and nature thrive together. This is not a new commitment for us — it is work we're already deeply engaged in. As the Village's program manager for Climate Ready Rainscapes, we've built strong working relationships with staff, collaborated with local institutions and supported residents in bringing nature-based solutions to their homes.

Additionally, our involvement with the CASE Green Infrastructure Working Group has provided a comprehensive view of schoolyard greening potential across all public schools in Oak Park. These direct experiences, paired with the local knowledge of two Greenprint management team members who are actively engaged in local sustainability efforts, give us a head start in launching this process. We know the players, understand the context and can navigate the nuances of Oak Park's policy landscape, public infrastructure and community dynamics.

With an in-house team of planners, engagement specialists, landscape architects and civil engineers, we offer a streamlined, interdisciplinary approach that reduces ramp-up time, deepens technical insight and delivers a cohesive planning process — moving efficiently from insight to impact.



Existing native plantings at Brooks Middle School, observed as part of the existing conditions assessment for the CASE schoolyards GI study



Approach

Guiding Principles

Greenprint approaches projects adaptively and thoughtfully to ensure that the resulting plans are reflective of community desires, are highly implementable and meaningfully advance overarching goals. The following principles guide our team’s work:

- **Center community in design.** We engage residents and institutions as co-designers — not just stakeholders — ensuring they have real agency in shaping the vision, priorities and strategies from start to finish.

The four best practices of centering community



Source: *The Equity Guide*

- **Recognize biodiversity as core infrastructure.** We treat our natural systems as essential infrastructure, elevating its role in creating vibrant, healthy public spaces.
- **Ground decisions in data and lived experience.** We pair robust spatial analysis with community knowledge to guide decision-making that is

evidence-based, equity-informed and locally relevant.

- **Design for real-world implementation.** We develop recommendations that support ambitious community and environmental goals, while ensuring they are feasible to implement, fundable and maintainable over time.

Greenprint’s community engagement approach is strongly guided by the key principles articulated in the Equity Guide. Our goal is for all engagement to grow trust, and we consider community members as essential partners in all planning and development projects.

Task 1: Define Green Infrastructure and Enhanced Park Management

This foundational task will establish what “Green Infrastructure” (GI) and “Enhanced Park Management” (EPM) mean for Oak Park and how they will be measured toward the Village’s 30 percent goal. Our approach balances technical expertise with community values, leveraging existing plans and data, proven models, and municipal and partner engagement to ensure the definitions are locally grounded, measurable and widely supported.

LAY THE GROUNDWORK

We approach GI as a connected network of natural and nature-based systems that includes stormwater features, native landscapes, habitat corridors and community-managed spaces. These systems provide critical ecological and community benefits, from stormwater capture and heat mitigation to biodiversity, habitat and neighborhood well-being. To lay a strong foundation for locally relevant definitions, we will first review how GI and EPM are currently defined and measured across local plans, peer communities and the broader field. This includes:

- A review of existing Village and partner materials such as the Climate Ready Oak Park Plan (CROP), Green Infrastructure Prioritization Report, stewardship-related Park District plans and the biodiversity survey results



- Regional reports and definitions from MWRD, the Chicago Metropolitan Agency for Planning (CMAP) and the City of Chicago
- National frameworks and metrics from leading field organizations such as the Green Infrastructure Leadership Exchange, American Rivers and The Nature Conservancy
- Peer city methodologies (e.g., Philadelphia's Greened Acres, Minneapolis' urban forest targets, San Francisco's GI performance metrics) to surface transferable practices



GI integration expertise

Greenprint combines regional thought leadership with on-the-ground experience to help Oak Park define and advance its GI and EPM goals.

In her former role, Kristin Ihnchak, Greenprint's Vice President of Planning + Engagement, authored [Integrating Green Infrastructure](#), a strategy paper that shaped CMAP's ON TO 2050 plan. It expanded the definition of GI beyond stormwater practices to a connected network of spaces that support ecological and community resilience. Her insights into scaling GI strategies inform our approach to Oak Park's local context.

Meanwhile, Greenprint's engineers and landscape architects bring deep implementation expertise, with experience designing hundreds of GI projects across the Midwest. From soil and plant selection to maintenance and permitting, our team ensures that GI and EPM definitions are both visionary and technically sound.

Scan to read the strategy paper:



We will pay particular attention to ecosystem service and co-benefit metrics such as stormwater volume reduction, biodiversity indices, carbon sequestration and urban heat mitigation. Integrating these considerations will assure that Oak Park's definitions reflect both functional outcomes and community values. The team will also assess data availability and limitations across land types to determine what can be feasibly measured and tracked over time.

Our licensed landscape architects and civil engineers will support this foundational review by contributing practitioner insights on the performance characteristics of various GI elements. Their experience designing and maintaining stormwater systems, native plantings and biodiversity features will inform a nuanced understanding of what constitutes meaningful, measurable infrastructure — ensuring the Village's definitions are goal-oriented and technically grounded.

Findings from this review will be synthesized into a working summary of definitional and measurement options. This product will support productive discussion with Village staff and partners and serve as a key input to community engagement and draft plan development.

ALIGN THE FRAMEWORK WITH COMMUNITY NEEDS

Meaningful definitions and methodologies for measuring GI and EPM must reflect the lived experiences, priorities and insights of vulnerable community members, as well as those who have the most potential to change conditions for the better. Our engagement process will surface these perspectives, build alignment across institutions and establish a strong feedback loop to guide the GI and EPM definitions and measurement framework.

Our approach will bring together residents, institutional partners and municipal leaders to inform the Plan's definitions and metrics while setting the stage for long-term collaboration. Greenprint's long-standing relationships with Village staff, schools and community groups will enable us to bring the right people to the table and build trust from the outset.



For example, our ongoing participation in the Cross Agency Sustainability Exchange (CASE) Green Infrastructure Working Group has already given us a nuanced understanding of school facility constraints, institutional readiness and untapped campus GI

potential — positioning us to engage District 97 and 200 efficiently and effectively.

We will conduct a minimum of four engagement events with stakeholder groups in the table below.

Stakeholder Group	Goals
<p>COMMUNITY REPRESENTATIVES <i>Incentives or stipends will be offered to support participation</i></p> <div data-bbox="94 625 714 856"> </div>	<ul style="list-style-type: none"> • Emphasize participation from historically underrepresented groups and vulnerable communities • Explore how residents interact with nature, biodiversity, parks and other forms of GI • Identify barriers like renter restrictions, maintenance concerns and skepticism toward native landscapes • Uplift underrecognized assets such as community gardens, rooftops and informal stewardship zones
<p>CONSERVATION AND BIODIVERSITY GROUPS <i>Those who helped shape CROP</i></p> <div data-bbox="110 1003 711 1184"> </div>	<ul style="list-style-type: none"> • Explore approaches to defining and measuring GI and EPM to ensure the framework reflects Oak Park's ecology, delivers co-benefits and aligns with best practices
<p>PARTNER AGENCIES <i>Sustainability leads for each</i></p> <div data-bbox="97 1339 672 1591"> </div>	<ul style="list-style-type: none"> • Explore how GI and EPM are currently understood and practiced • Identify shared opportunities • Surface operational needs that may shape future recommendations • Review upcoming capital projects • Assess each partner's readiness to implement GI and EPM strategies
<p>VILLAGE STAFF <i>Engage staff from departments like Sustainability, Public Works, Neighborhood Services and Communications</i></p> <div data-bbox="305 1801 483 1885"> </div>	<ul style="list-style-type: none"> • Understand firsthand knowledge of how GI is currently deployed, maintained and communicated across the Village • Explore existing practices • Clarify internal understanding • Identify challenges and opportunities



Additional engagement methods may include:

- An **online community survey** via Engage Oak Park to gather broad resident feedback
- **Key person interviews** with large institutional landowners play a key role in local public health, such as Rush Oak Park Hospital, West Suburban Medical Center and large affordable housing providers like the Oak Park Residence Corporation
- A conversation with the **Oak Park Public Library** to explore opportunities for community education and outreach to support GI and EPM goals
- **Tabling at community events** to meet people where they already are and broaden input

As part of our commitment to a meaningful feedback loop, we will also revisit these stakeholders in later phases of the project to gather input on emerging recommendations, including scenario concepts developed in Task 2. This ensures that those involved early in the process remain engaged and their perspectives directly shape key decisions.

DRAFT DEFINITIONS AND MEASUREMENT FRAMEWORK

Following engagement activities, we will synthesize key themes, insights and recommendations gathered across all groups to inform the development of draft

definitions for GI and EPM, as well as preliminary measurement methodologies. This synthesis will balance community priorities with technical and operational considerations. It will integrate qualitative input — such as how residents experience nature, institutional stewardship practices and interdepartmental perspectives — with quantitative data drawn from peer benchmarking and current Village plans and materials. The resulting framework will define what qualifies as GI and EPM and outline how each can be measured in a way that is implementable, transparent and grounded in Oak Park’s unique context. All recommendations will be vetted by our technical team to ensure feasibility across a range of land uses and site conditions.

SHARE DRAFT FRAMEWORK FOR FEEDBACK AND REFINEMENT

The draft definitions and measurement methodologies will be shared with internal staff and decision-makers for feedback and refinement. We will facilitate structured discussions to ensure interdepartmental alignment, assess operational feasibility and address any questions related to implementation and tracking. This internal review will serve as an important checkpoint before advancing the framework to the Commission and Village Board for input and approval.

“...the staff and groups associated with the RainReady project were creative, dedicated, listened/open-minded about opinions, honest, compassionate, kind and all with excellent communication and interpersonal skills. We were grateful for their conscientiousness to ensure Calumet City’s participation was successful.”

Valencia Williams, Special Projects Coordinator
The City of Calumet City



Greenprint’s Fabiola Bautista discusses the Wentworth Avenue Green Vision Plan at Calumet City’s Hispanic Heritage Festival.



We will prepare a presentation that summarizes the research and engagement process, outlines the rationale behind the proposed framework, provides visual examples to illustrate key concepts, and clearly connects the framework to the Village's 30 percent goal. The presentation will also demonstrate how stakeholder input directly shaped the draft definitions and measurement methodologies. All feedback received will be documented and incorporated into a final version of the framework, which will guide the subsequent baseline analysis and plan development.

DELIVERABLES

- **GI and EPM Definitions and Measurement Framework**
- **Engagement Summary Memo** documenting stakeholder input, including themes, challenges and opportunities that shaped the final framework
- **Public Engagement Materials**, including slide decks, handouts, posters, online surveys and other visuals
- **Focus Group and Interview Protocols** with discussion guides, interview questions and facilitation materials
- **Presentation Deck** for Commission and Board review with findings, proposed definitions, measurement approach and stakeholder input

Proposed Task 1 budget: \$32,275

Example definitions from past projects

Greenprint's multidisciplinary team brings deep and well-rounded experience in defining and measuring GI and EPM. While the final definitions will be shaped through collaborative engagement, here are examples of practices we've seen constitute GI and EPM in other communities.

Green Infrastructure (GI) may be defined as a connected patchwork of natural and nature-based systems that deliver ecosystem benefits. Potential components include:

- Street trees and urban forests
- Parkways with native plantings
- Green stormwater infrastructure (GSI) including bioswales, rain gardens, permeable pavement, detention basins, constructed wetlands
- Green roofs
- Pocket parks and community gardens
- Open green spaces managed for infiltration (see EPM practices)

Enhanced Park Management (EPM) may include land enhancements and operational practices such as:

- Turf conversion to native and adapted plantings
- Integration of GSI
- Tree species diversification
- Soil amendments and aeration
- Smart irrigation and xeriscaping
- Reduced mowing frequency
- Reduced pesticide and fertilizer use
- Use of low-emissions maintenance equipment

The Village could consider either setting a minimum number of required practices or identifying specific practices that land must include in order to qualify as EPM.



Task 2: Determine Existing Conditions and Areas of Opportunity

With agreed-upon definitions and measurement methods in place, Task 2 will launch with the creation of a comprehensive inventory of GI and EPM assets across Oak Park. This effort will establish a clear baseline and illuminate high-impact opportunities to advance the Village's 30 percent land coverage goal. Following the inventory, Greenprint will create a range of potential pathways and strategies by which to achieve the 30 percent goal by 2030 for discussion and debate. By the end of Task 2, our team will have a draft set of vetted policies, programs, and educational and outreach opportunities to assess as potential recommendations in the Biodiversity and GI Plan that will achieve the 30 percent goal.

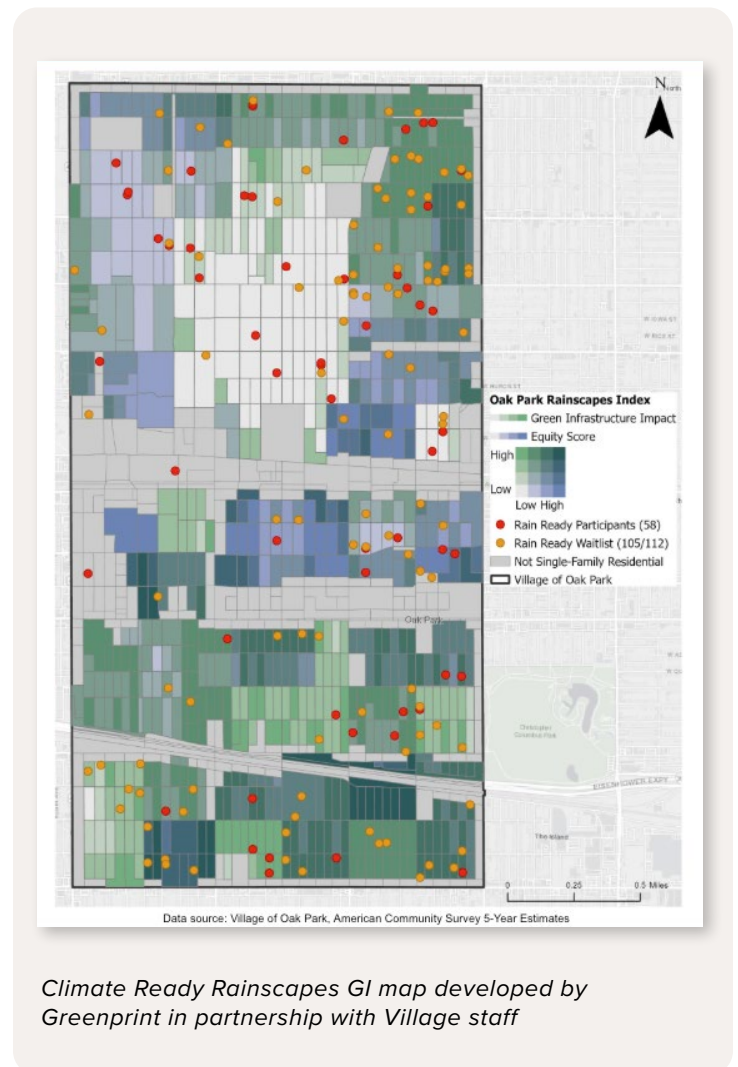
USE NEW FRAMEWORK TO INVENTORY EXISTING GI AND EPM

During this step, Greenprint will build on the work of Task 1 by reviewing and synthesizing existing planning documents and datasets, including the GI Prioritization report, biodiversity survey results, parkway planting ordinance, Climate Ready Rainscapes program data and findings from the green schools analysis currently underway through the CASE working group. Following this synthesis, we will obtain and map spatial data to identify GI and EPM features across the Village. We will work with Village staff to coordinate a comprehensive GIS data request, including files such as publicly owned parcels, land use and existing GI assets. We will also draw upon climate and socioeconomic data we've obtained for the Rainscapes program, such as land surface temperature, flood risk, impervious cover, tree canopy and various equity factors.

Our team will also request available data from major landowners engaged in Task 1. The combined dataset will be mapped to analyze spatial patterns in land ownership, land use, equity priority areas and environmental overlays, such as areas with elevated surface temperatures and flood risk. This analysis will inform an equity-informed opportunity map, prioritizing areas with the greatest potential to

expand GI and EPM — particularly where green space is limited, climate risks are higher or populations are more vulnerable. We expect this process to reveal common GI and EPM typologies, such as parkways, schoolyards, rooftops, yards, green spaces and vacant lots, which we will catalog and assess for near- and long-term implementation.

Our landscape architects and civil engineers will bring a practiced lens to this analysis — reviewing mapped assets not only for their type and location, but for their design performance, hydrologic function and maintenance feasibility. Our team has successfully conducted GI asset inventories for municipalities across the Midwest, integrating native planting viability, drainage constraints and retrofit potential into our baseline analysis.





To validate mapped data and fill in gaps, we will conduct site visits to assess on-the-ground conditions, confirm asset function and capture features not currently inventoried. Photo documentation and geotagged notes will be collected to support analysis, storytelling and future asset management needs. Site visits will be conducted by our interdisciplinary team who are skilled in identifying GI elements that may be missed in datasets — such as bioswales with impaired performance or turf areas suitable for retrofit. Geotagged notes will include preliminary condition assessments that can inform future design, cost and maintenance planning.

All findings will be synthesized into a report for discussion with Village staff. This product will include maps, photos, tables, bulleted insights and discussion prompts, and will directly feed into the strategy development process and the GI and EPM baseline report.

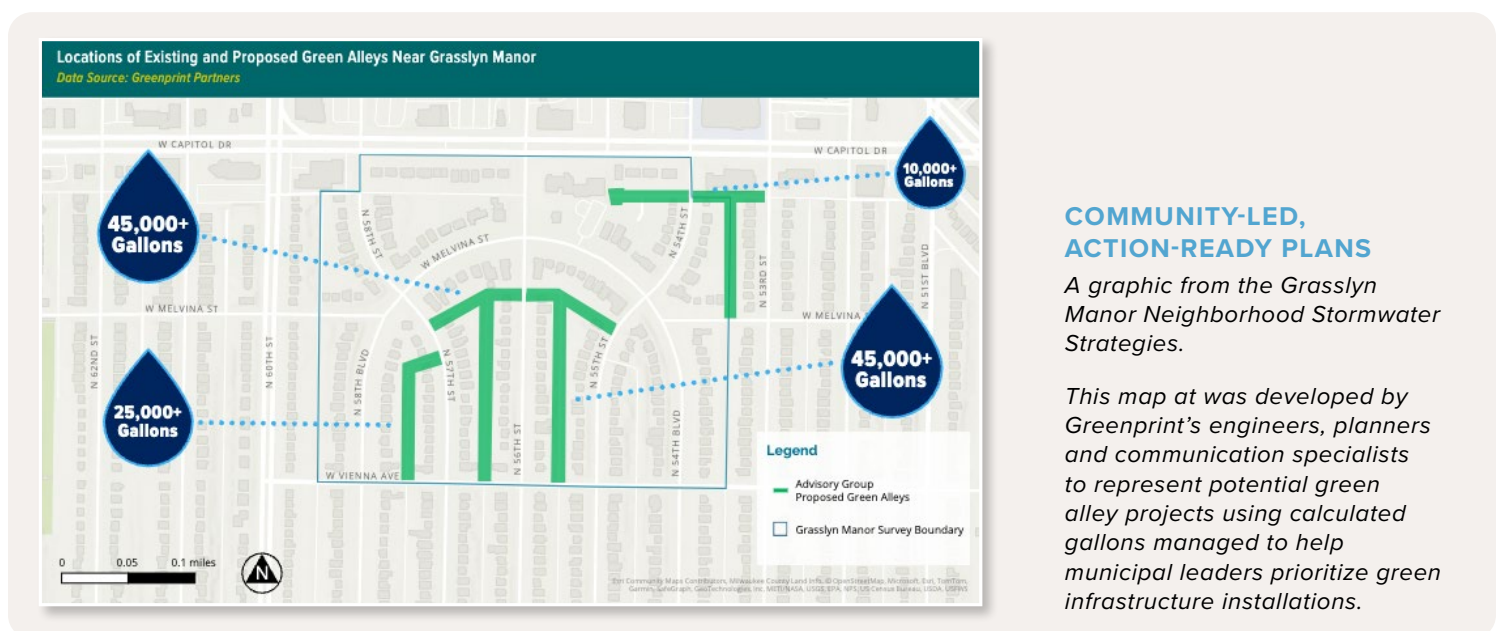
DEVELOP AND DISCUSS STRATEGIES TO ACHIEVE THE 30 PERCENT GOAL

The baseline inventory will provide a clear picture of where GI and EPM have already been implemented and where gaps remain across municipal, institutional and privately owned lands. As a first step, Greenprint will calculate an estimate of the remaining acreage

needed to meet the Village's 30 percent goal, providing a target that guides the development of feasible, inclusive strategies for implementation.

Informed by the partner discussions in Task 1 and the inventory analysis, Greenprint will develop a series of strategies and consider how various combinations could achieve the 30 percent goal. Strategies will include GI and EPM implementation across Village-owned land, institutional campuses and privately owned parcels in residential, commercial and industrial areas. The team will elevate equity considerations, such as green space access, flood risk, urban heat and neighborhood density, that can shape how and where strategies are deployed, helping the Village prioritize areas for investment. Visuals will include annotated maps with callouts to clearly show trade-offs and opportunities for various strategies. This process will begin to shape the Plan's potential recommendations, as programmatic, policy and regulatory levers come to light and are tested against Village, partner and public feedback.

Draft strategies will be summarized and shared with Village staff, institutional stakeholders and community members who participated in Task 1 engagement for targeted feedback. Depending on Village preferences, we may also host a public open house to gather broader input. The event could





feature large-format posters, discussion prompts and interactive methods such as dot voting or comment cards to highlight community preferences and trade-offs. Overall stakeholder feedback will be summarized and discussed with the Village to inform the refinement of a preferred set of strategies, which will be carried forward into the Plan.

SUMMARIZE EXISTING GI/EPM AND OPPORTUNITIES

Drawing from the full scope of Task 2, Greenprint will develop a comprehensive summary of existing GI and EPM as well as high-opportunity areas for expansion, shaped by spatial equity indicators and the priorities surfaced during the planning process. The resulting report will include narrative summaries with supporting visuals that explain the process, highlight

Activating Oak Park's parkway potential

Parkways represent some of Oak Park's most visible and underutilized GI assets. With thousands of linear feet of public right-of-way, they hold significant potential for advancing the Village's 30 percent goal — particularly in dense residential areas with limited greening options. In these areas, parkways may represent one of the few available spaces for meaningful biodiversity and greening, making them a key equity lever in the plan.

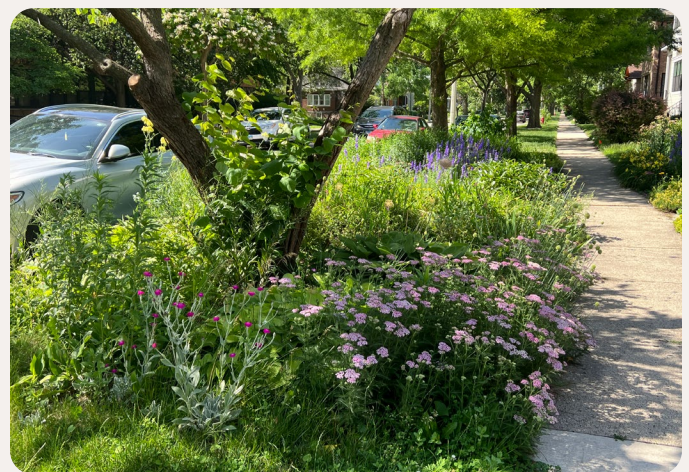
The newly adopted Parkway Planting Ordinance creates a critical policy foundation by formally allowing resident-managed native plantings in the parkway. But unlocking its full potential will require more than regulatory permission — it demands thoughtful planning, clear guidance and inclusive outreach.

As part of this planning effort, we will consider including strategies in the Plan such as:

- **Block-based organizing models** that encourage collective stewardship of contiguous parkways, building neighborhood identity and shared investment
- **Engagement of housing providers and renters** to support tenant participation and biodiversity along multi-family corridors
- **Native plant sharing opportunities** to make planting more affordable, especially for residents with limited financial resources

- **Parkway signage and storytelling tools** that educate residents and connect individual gardens to the Village's 30 percent goal and broader climate vision
- **Culturally relevant communications and education**, ensuring that all residents understand the ordinance and feel confident in how to participate
- **Visual and ongoing maintenance guidance** to support success and reduce potential conflict, particularly where aesthetic expectations vary

These ideas are just a starting point. The planning process will surface additional strategies for leveraging this ordinance as a tool for community participation, biodiversity and visible progress toward Village goals.



Parkway plantings featuring native plants in South Oak Park



key insights and point toward strategic directions for the Plan. Documented data sources, metadata and methods will be included in the appendix for transparency and to enable the Village to track future progress toward the 30 percent goal.

Greenprint will draft the report with an eye toward accessibility and future repurposing — ensuring that content can be used directly in the Plan or other communications. We will first review the draft with Village staff to ensure alignment and refine the identified opportunity areas. Then, we will circulate the draft to institutional partners and community stakeholders engaged during Task 1 to invite further input and build momentum for the next phase. All feedback will be summarized and discussed with the Village and integrated into the final deliverable before launching Task 3.

DELIVERABLES

- **Baseline and Opportunity Analysis Report:** Narrative and visual report quantifying existing GI and EPM coverage and identifying opportunity areas, with a detailed baseline inventory methodology to help the Village track progress toward the 30 percent goal
- **GIS Package:** Shapefiles/geodatabases for existing GI and EPM assets and potential expansion areas
- **Overview Presentation:** High-level maps, overlays and infographics tailored for use in community meetings, Commission/Board presentations and public-facing communications

Proposed Task 2 Budget: \$46,605

Task 3: Plan Development

Building on the established definitions, baseline inventory, institutional insights and strategy development, Task 3 will synthesize all findings into a clear, implementable Biodiversity and GI Plan. This final deliverable will serve as both a strategic roadmap and an actionable toolkit to guide the Village of Oak Park in meeting its goal of 30 percent GI and EPM land coverage by 2030.

TRANSLATE LEARNINGS INTO STRATEGIES

Greenprint will consolidate the scenario planning results into a comprehensive set of evidence-based recommendations for the Village's consideration, grounded in our technical expertise in designing and implementing GI and EPM strategies. These strategies will span:

- **Policy + Regulatory Levers:** Recommend updates to ordinances, design standards, zoning codes and permitting practices that embed GI and EPM into the fabric of public and private development
- **Programs + Incentives:** Propose new or expanded grant programs, technical assistance offerings, and long-term maintenance support that make GI and EPM adoption easier and more attractive for property owners and institutions
- **Education + Outreach:** Explore outreach strategies such as tailored campaigns, engagement toolkits and community education that raise awareness, empower action and build lasting stewardship

Fostering stewardship

Greenprint is partnering with Groundwork San Diego–Chollas Creek to confront climate challenges in the Chollas Creek Watershed. Together, we're developing a community-centered blue-green infrastructure (BGI) plan that empowers residents to champion climate solutions.

As part of this work, we're advancing the Chollas Blue Green Vision public education campaign. Our team led branding efforts to elevate BGI and stormwater investments, engaging residents around solutions that reduce flooding and enhance parks, trails and public spaces.





- **Partnerships + Collaboration:** Recommend cross-sector governance models that empower institutions, community groups and Village departments to co-lead implementation, ensuring shared ownership and long-term momentum

Each strategy will denote the relevant applicable land ownership(s) and land uses, including municipal, institutional, commercial, industrial and multi-family and single-family residential. This clarity will help all stakeholders understand their potential contributions to achieving the 30 percent goal.

To ensure the Biodiversity and GI Plan supports the broader goals of CROP, equity and climate resilience will be embedded across all strategies. Drawing from the Village's Existing Conditions

and Vulnerability Assessment and the CROP framework, Greenprint will incorporate criteria that prioritize communities with limited green space, elevated surface temperatures and flood risk. Our team will also emphasize the co-benefits of GI and EPM — such as improved water and air quality, mental health, biodiversity and climate resilience — especially in areas with existing socioeconomic and infrastructure disparities. Strategies will be designed to reduce barriers and expand participation among underrepresented and vulnerable populations.

Greenprint will collaborate with the Village to finalize this framework of strategies, which will serve as the backbone of the Biodiversity and GI Plan. Each strategy will be supported by a detailed

Advancing GI + EPM with strategies that work

Greenprint has led the design and implementation of GI programs across the Midwest that offer tested models for how Oak Park can operationalize its 30 percent goal. Each of the following programs illustrates integrated approaches across **policy, programs, education and partnerships**:

- **Climate Ready Rainscapes (Oak Park, IL):** Greenprint leads Oak Park's Climate Ready Rainscapes program, which provides grants and technical support for residential green infrastructure. The team manages program design, outreach, contractor training and equity strategy development. Greenprint also created an assessment process for up to 40 properties annually and established metrics to track progress, reduce flooding and advance climate resilience through community-driven, nature-based stormwater solutions.
- **RainReady Calumet Corridor (South Suburban Cook County, IL):** Greenprint is partnering with the Center for Neighborhood Technology to administer a \$6M Cook County stormwater management initiative in six flood-prone Chicago suburbs. Partnering with local steering committees, we support resident education, identify community-driven project opportunities and implement nature-based solutions such as stormwater bumpouts, permeable pavement and green schoolyards.
- **Fresh Coast Green Communities (Milwaukee, WI):** Greenprint is partnering with the Milwaukee Metropolitan Sewerage District to identify and implement GI projects by providing funding and technical assistance to public and private property owners across its service area. Greenprint worked with the District to design the program, develop funding mechanisms and co-benefit frameworks, and create a GIS database to identify and track eligible projects. Greenprint leads site design, permitting and construction while also spearheading community engagement to ensure projects meet the District's goals for stormwater capture and co-benefit maximization.



implementation roadmap identifying lead agency or partner, supporting collaborators, timeline, potential funding sources, order-of-magnitude cost estimates, and level of effort. This will position the Village and its partners to take immediate next steps following adoption.

Once agreed upon, we will develop a visually engaging, accessible and action-focused Plan document. This draft Plan will integrate content from all prior tasks, including community and stakeholder feedback, final definitions, baseline inventory findings, and scenario analysis. The Plan's look-and-feel can follow either Village branding or incorporate the Climate Ready branding, to be determined by the Village. Wherever possible, we will use charts, infographics, photos and annotated maps to improve clarity and resonance with multiple audiences.

GATHER FEEDBACK TO REFINE THE DRAFT PLAN

Once a draft Plan has been delivered to the Village, Greenprint will work closely with staff across departments to gather input and revise the Plan to ensure it is ready for external review. Staff feedback will be particularly important to ensure the plan is grounded in operational realities and ready for collaborative implementation.

Following internal review and sign-off, we will reconvene the stakeholder groups engaged in Task 1 to gather feedback and strengthen collective

ownership of the Plan. These sessions will honor earlier contributions, promote transparency and build momentum for implementation. At a minimum, Greenprint will facilitate at least four targeted engagement meetings:

- **Public open house:** Invite broad resident feedback through an interactive, accessible event
- **Community partner focus group:** Facilitate a conversation with community representatives to validate equity-centered strategies and ensure cultural and neighborhood relevance
- **Institutional workshop:** Conduct a targeted discussion with representatives from schools, the Park District, the Library and other major landowners to ensure alignment between proposed strategies and partners' operational capacities and plans
- **Technical review session:** Engage biodiversity and conservation stakeholders to validate scientific integrity, ecosystem benefits and metrics for success

We will also present the draft Plan to the relevant Village Commission(s) for discussion and feedback, providing closure to their earlier engagement.

All feedback will be summarized and shared with the Village for discussion. Where appropriate, we will document key revisions and the rationale



As part of the Grasslyn Manor Neighborhood Stormwater Strategies project, community members participate in an engagement event on green infrastructure in the community. Attendees hold educational materials developed by Greenprint.



behind them to clearly demonstrate how community and stakeholder voices shaped the final Plan. This transparency will strengthen trust and buy-in, particularly among institutions and community partners whose leadership will be critical in the implementation phase.

Once revisions are finalized, we will prepare a presentation-ready version of the Plan and develop a visual presentation to support Village Board review and approval. The presentation will clearly convey the Plan's purpose, development process, engagement outcomes, core strategies and next steps toward achieving the Village's 30 percent goal. This final step will position the Plan for a strong launch into implementation by Village staff, institutional partners, large landowners and community members.

DELIVERABLES

- **Final Biodiversity and GI Plan:** A visually engaging and action-oriented document that integrates all findings and presents clear strategies to reach 30 percent GI and EPM coverage by 2030. The Plan will include:
 - A narrative supported by graphics, photos and maps
 - Strategy recommendations organized by land ownership and land use type, showing their contribution toward the Village's 30 percent goal
 - A detailed implementation roadmap with leads, partners, timeline, costs and potential funding sources
 - Appendices documenting methodology, stakeholder engagement, data sources and additional resources to support implementation
- **Review Drafts and Summary of Revisions:** Interim drafts shared through engagement sessions, accompanied by a memo summarizing the feedback received, key revisions made and how input influenced final recommendations
- **Presentation Materials:** Two polished slide decks tailored for Board and relevant Commissions, along with briefing materials (e.g., talking points and handouts) that support internal presentation, public communication and formal adoption

Proposed Task 3 Budget: \$41,155



Climate Ready Oak Park: One Year On 2023 Progress Report designed by Aya O'Connor



Project Management and Communication

Greenprint will bring a structured, responsive and highly collaborative approach to project management and communication, reflecting our deep understanding of the Village's priorities, built through the Climate Ready Rainscapes program partnership. Our interdisciplinary team of planners, civil engineers, landscape architects and engagement specialists will together deliver a high-quality, community-centered Biodiversity and GI Plan.

At project launch, we will co-develop a detailed work plan and schedule in collaboration with the Village. This plan will establish clear milestones, responsibilities and review timelines while accounting for relevant Village approval pathways and Commission engagement points. Our team will also support integration with concurrent Village initiatives — such as Climate Ready Rainscapes, the CASE GI Working Group, Park District activities, and other climate and equity programs — to maximize alignment and collective impact.

Greenprint's experienced Project Manager, Sydney VanKuren, will serve as the primary point of contact, ensuring consistent communication, clear decision-making and a cohesive experience for all Village partners. Coordination will include regular check-in meetings to share progress, surface insights and decisions, and troubleshoot challenges early. We understand that flexibility, responsiveness and thoughtful change management are essential to successful municipal planning efforts, and our team is well-practiced in adapting to evolving needs, stakeholder feedback and external developments.

We will apply an iterative development process, introducing draft ideas early, gathering input and building shared ownership before refining them into final deliverables. Internally, our QA/QC process is led by senior staff with expertise in landscape architecture, planning and engineering. All deliverables will undergo rigorous review, copy editing and formatting checks to ensure they are technically sound, visually clear and ready for use by a wide range of audiences.

Recognizing the multi-stakeholder nature of this work, we will align our process with the capacities and rhythms of Village staff, partners and the broader Oak Park community. We will be responsive to questions, transparent about how feedback is incorporated, and proactive in identifying opportunities to improve coordination.

Above all, we are committed to delivering an exceptional final product through partnership that feels seamless, energizing and deeply collaborative.

Optional Enhancements (If Desired by the Village)

To further amplify the reach, usability and long-term impact of the Biodiversity and GI Plan, Greenprint can provide optional enhancements at the Village's request:

- **Development of an interactive StoryMap to accompany the Plan.** This web-based tool would visually present plan findings, highlight priority areas and incorporate community input in an accessible, engaging format for public audiences.
- **Progress tracking dashboard.** A simple tool to help the Village monitor and communicate progress toward the 30 percent goal over time, supporting transparency and adaptive implementation.



Project Schedule

MONTH	TASKS
1	Task 1: Define Green Infrastructure and Enhanced Park Management <ul style="list-style-type: none">• Landscape scan of existing GI and EPM definitions and measurement breakdown• Community and stakeholder agreement• Definition development and refinement• Meetings with Commissions/Board and preparation of materials• Project management and VOP coordination
2	
3	
4	Task 2: Determine Existing Conditions and Areas of Opportunity <ul style="list-style-type: none">• Review of existing materials and data collection• Mapping, GIS analysis and site visits• Stakeholder engagement• Strategy development• Summary presentation• Project management and VOP coordination
5	
6	
7	
8	
9	Task 3: Plan Development <ul style="list-style-type: none">• Draft plan development and design• Review cycles and integration of staff/public/partner feedback• Public open house and Board/Commission presentations• Final Plan transmittal• Project management and VOP coordination
10	
11	
12	



Project Personnel



Project Personnel

We've assembled a multidisciplinary team with expertise in landscape architecture, engineering, GIS and spatial analysis, community engagement, and communications. Our team blends national leadership in climate resilience and green infrastructure with trusted relationships in Oak Park. We have a strong track record of designing equitable, community-centered solutions and have led multiple Village initiatives aligned with the Climate Ready Oak Park plan.

Project management and planning professionals will lead this effort, supported by technical design and engagement specialists to ensure a collaborative, inclusive process that helps the Village meet its 30 percent goal. We guarantee the proposed team will remain assigned to the project for its duration, as long as they remain employed by Greenprint.

Our Team

Nicole Chavas, President + COO

ROLE: SENIOR ADVISOR

Nicole will serve as Senior Advisor for the Biodiversity and GI Plan. A 2023 Crain's Notable Leader in Sustainability, she brings deep experience delivering nature-based, climate-forward infrastructure and designing programs with measurable equity and environmental outcomes. Her expertise spans funding strategy, municipal partnerships, and cross-sector collaboration, having secured over \$10 million in grants and capital for GI and climate resilience initiatives.

A civically active Oak Park resident, Nicole currently serves as Principal-in-Charge for the Climate Ready Rainscapes program and represents Greenprint on the CASE Green Infrastructure Working Group. Her trusted relationships with Village staff, community partners and sustainability advocates will help ensure this project is community-centered and aligned with Climate Ready Oak Park goals.

Kristin Ihnchak, Vice President of Planning + Engagement

ROLE: PRINCIPAL-IN-CHARGE

Kristin will serve as Principal-In-Charge for the Biodiversity and GI Plan. Kristin is an accomplished planner with 20 years of experience in climate resilience, sustainable land use, community engagement and program implementation. As Vice President of Planning + Engagement at Greenprint, she leads a national practice known for aligning community priorities with technical solutions.

Kristin has built strong partnerships in Oak Park through her leadership on the Climate Ready Rainscapes program and other Village sustainability efforts, where she developed participatory engagement strategies, equity frameworks and measurable outcomes. She will lead this initiative with a focus on consensus-building, actionable planning and advancing Oak Park's 30 percent goal by 2030.

Sydney VanKuren, AICP, Director of Planning

ROLE: PROJECT MANAGER

As Project Manager, Sydney will oversee day-to-day coordination for the Biodiversity and GI Plan, serve as the primary point of contact with the Village and manage all project deliverables and schedule. Sydney is an experienced project manager with expertise in equitable climate resilience and nature-based solutions. She excels in facilitating community-driven planning processes and building collaborative partnerships with municipalities, community groups and institutional stakeholders.

Currently leading GI and resilience initiatives in Milwaukee and Chicago, Sydney brings a proven ability to translate community input into effective, measurable strategies — skills that will help drive Oak Park toward its 30 percent goal.



Anna Jentz, Planner

ROLE: PROJECT ASSOCIATE

- Conducts research, data analysis, GIS mapping and technical writing to advance climate resilience
- Leads community engagement and stakeholder collaboration using inclusive planning approaches
- Supports project management to deliver equitable, actionable strategies

Raul Justo, Program Specialist

ROLE: PROJECT ASSOCIATE

- Leads GIS and spatial analysis to inform equitable GI planning and identify opportunity areas
- Integrates technical analysis with engagement to support transparent, inclusive planning
- Translates complex data into actionable strategies for climate resilience and green space access

Peter Graves, PLA, CDT, Director of Landscape Architecture

ROLE: SENIOR ADVISOR, LANDSCAPE ARCHITECTURE

- Leads Greenprint's landscape architecture practice
- Brings over a decade of experience in site design, GI and planning projects across the country
- Will provide landscape design and planning oversight and QC/QA to the project

Dena van der Wal, PLA, ASLA Associate / Landscape Architect

ROLE: LANDSCAPE ARCHITECTURE LEAD

- Leads sustainable landscape architecture for public and private spaces across Chicagoland
- Applies an ecosystem-driven design approach aligned with the Village's goals and priorities
- Leads landscape design for a pro bono Oak Park schools project, building local relationships and advancing green space access

Eneyda Salcedo, ASLA, Landscape Designer

ROLE: LANDSCAPE DESIGNER

- Supports landscape architecture and GI design

through research, analysis, visual communications and documentation

- Applies a place-based, community-centered design approach to create inclusive spaces for people and wildlife
- Supports landscape design and engagement for a pro bono Oak Park schools project

Alex Heidtke, PE, Engineering Manager

ROLE: ENGINEERING LEAD

- Delivers technical oversight and innovative design for sustainable infrastructure nationwide
- Brings GI engineering expertise, with a strong portfolio of site designs across Chicago that balance ecology, resilience and community priorities
- Partners with communities to co-create green spaces that advance equity and reflect local needs

Aya O'Connor, Director of Marketing

ROLE: COMMUNICATIONS LEAD

- Brings 20 years of experience leading communications strategy and multichannel campaigns to drive engagement and ensure accessibility
- Expert in visualizing and distilling GI and climate concepts through print, digital and web media
- Highly involved Oak Park resident with experience developing communications for Oak Park's Climate Action Plan, Climate Ready Rainscapes, OPCAN, COOP and other efforts within the Village

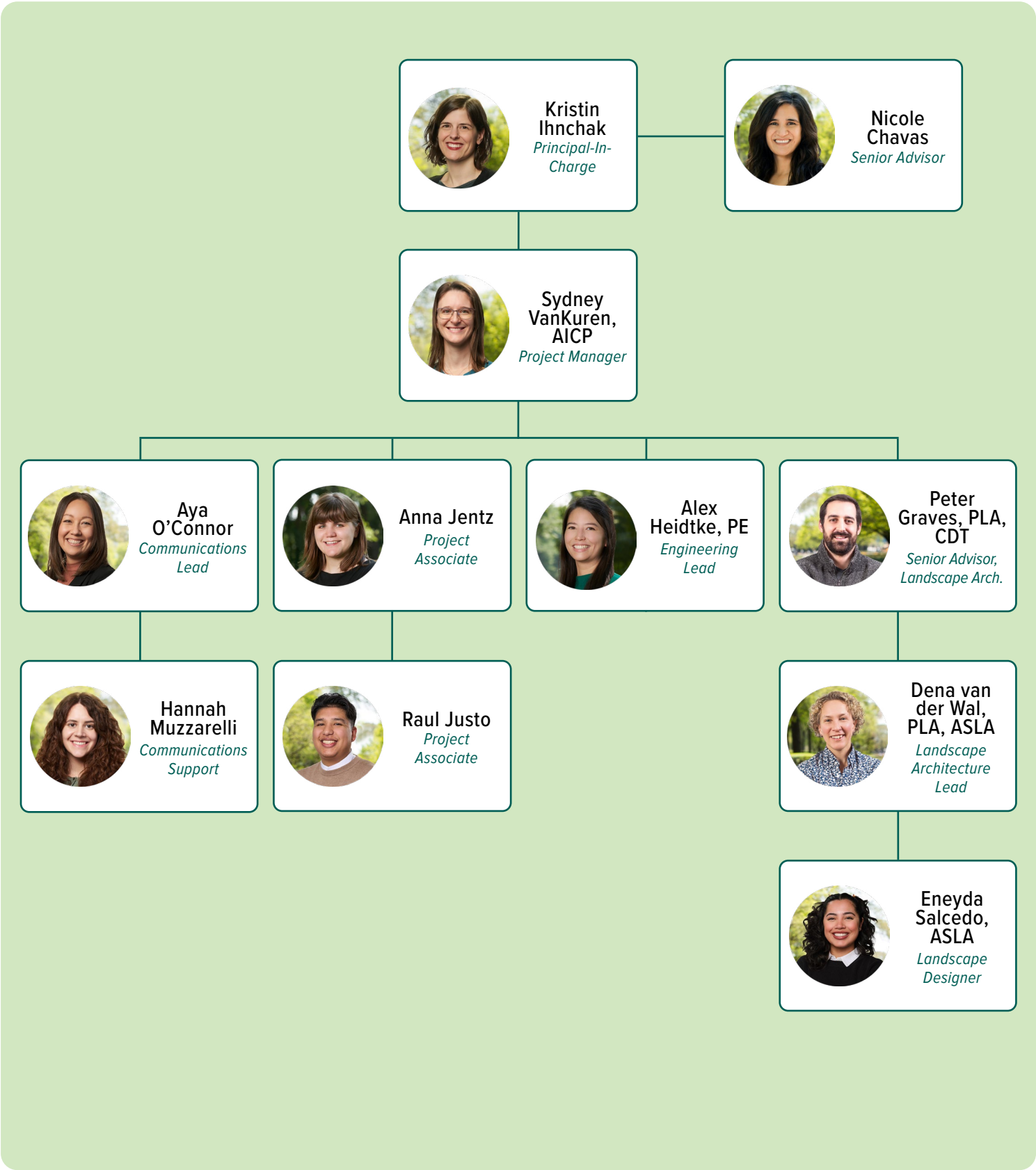
Hannah Muzzarelli, Marketing Coordinator

ROLE: COMMUNICATIONS SUPPORT

- Develops multichannel communications and branding strategies
- Translates complex sustainability and GI concepts into clear, visually engaging materials that drive community engagement and understanding
- Experienced in designing visually appealing, accessible GI and community plan documents that meet client needs and elevate public-facing plans



Organizational Chart





Credit: Michael Timm

Experience + Qualifications

Experience + Qualifications

City of Chicago GSI Strategy

- **Location:** Chicago, IL
- **Client:** City of Chicago Department of Environment
- **Scope of Services:** Community engagement and equity-centered planning, baseline assessment of GI and opportunities, GI-based prioritization to support plan development, evaluation of program effectiveness and investment strategies, development of sustainable maintenance models, roadmap for implementation and long-term resilience
- **Duration:** 2025–present
- **Cost of Services:** \$275K
- **Team:** Kristin Ihnchak, Sydney VanKuren, Aya O'Connor, Alex Heidtke, Anna Jentz, Raul Justo, Hannah Muzzarelli, Peter Graves
- **Reference:** Jackie Rigley, City of Chicago, (312) 639-9672, jacqueline.rigley@cityofchicago.org

Greenprint is leading development of Chicago's Green Stormwater Infrastructure Strategy, a citywide initiative spearheaded by the Department of Environment. The strategy aims to enhance

stormwater management, reduce urban flooding and ensure equitable access to GI.

The data-driven framework will guide future funding and policy decisions by integrating hydrological data, GIS-based flood risk assessments and financial analysis. It also will establish maintenance and governance models to sustain assets over time and prioritize investment in flood-prone and historically underserved areas. Key tasks include conducting a citywide GSI inventory and assessment, evaluating program effectiveness against stormwater goals, and creating a GIS-based prioritization framework. The team will perform a cost-benefit analysis of GSI typologies, assess funding trends and recommend strategies to strengthen investment pathways.

Greenprint is collaborating with local engagement and maintenance teams to ensure community input and workforce development are central to the process. A final strategy report will outline recommended investments, policy actions and an implementation roadmap, ensuring Chicago's approach to stormwater management is strategic, equitable and built for long-term resilience.



Greenprint developed interactive posters and tabled public meetings to receive community feedback on the Chicago Green Stormwater Infrastructure Strategy.



Wentworth Ave Green Vision Plan

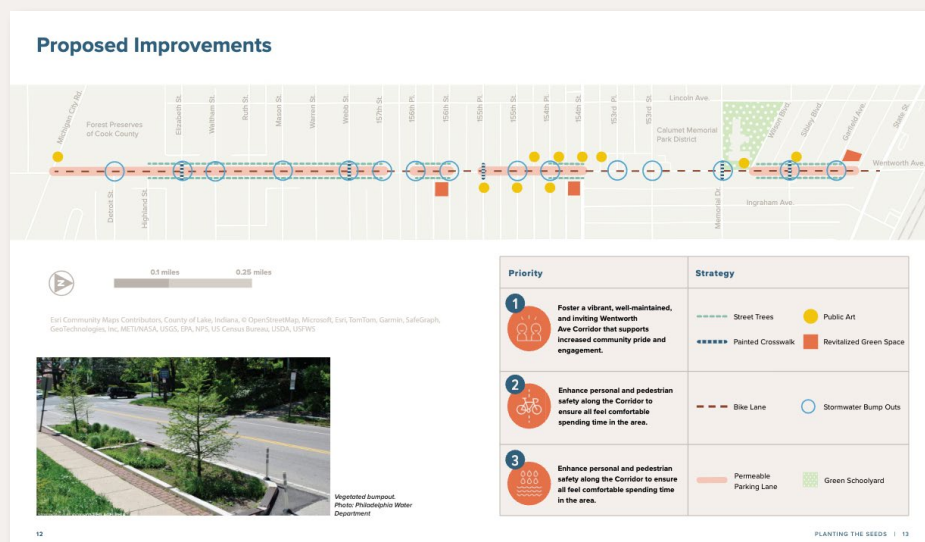
- **Location:** Calumet City, IL
- **Client:** City of Calumet City, IL
- **Scope of Services:** Community engagement and equity-centered outreach, assessment of flood risks and GI opportunities, design of GI to support resilience and walkability, conversion of vacant and underutilized spaces to GI, integration of GI with public realm enhancements, development of actionable strategies and implementation-ready project packages, roadmap for long-term investment and equitable community benefits
- **Duration:** 2024–2025
- **Cost of Services:** \$72K
- **Team:** Kristin Ihnchak, Sydney VanKuren, Aya O'Connor, Anna Jentz, Hannah Muzzarelli, Raul Justo, Alex Heidtke
- **Reference:** Valencia Williams, City of Calumet City, (708) 891-8139, vwilliams@calumetcity.org

With support from the Builders Initiative and Robert Wood Johnson Foundation, Greenprint led the creation of the [Wentworth Avenue Corridor Green Vision Plan](#) in Calumet City, Illinois. Wentworth Avenue is an underutilized area of the city despite

being home to many key community institutions, including City Hall. The plan outlines a community-centered vision to make the corridor more vibrant, walkable and resilient to flooding. Greenprint collaborated with city staff, local residents and a Senior Citizens Advisory Committee to ensure the plan reflected community priorities.

The plan proposes strategies to reduce flooding, improve pedestrian safety and enhance the appearance of the corridor. Key recommendations include converting vacant lots into green spaces, adding street trees, stormwater bump-outs, permeable parking, a green schoolyard, public art and a protected bike lane for safer, sustainable transportation. Greenprint led an inclusive outreach process focused on residents and business owners. Community feedback emphasized the need for flood prevention, beautification and safety improvements to encourage reinvestment and community pride.

Greenprint used this input to develop a comprehensive, implementation-ready plan that includes visual summaries, conceptual designs and individual project packages. Each priority project is paired with a tailored funding strategy. The plan now serves as a roadmap for long-term investment and transformation along the Wentworth Avenue Corridor.



COMMUNITY PRIORITIES MAPPED TO PROPOSED IMPROVEMENTS

A spread from the Wentworth Avenue Corridor Green Vision Plan that visualizes proposed improvements and their locations along the Corridor, linking strategies to the community priorities.



Wild Mile Framework Plan

- **Location:** Chicago, IL
- **Client:** Chicago Department of Planning and Development, Urban Rivers
- **Scope of Services:** Framework planning, planning guidelines analysis, riverwalk extension and master planning, ecological analysis, ecological and riparian restoration studies, post-industrial riverfront conversions, walkability and public space access analysis and creation
- **Duration:** 2017–2020
- **Cost of Services:** \$30K
- **Team:** Peter Graves
- **Reference:** Nick Wesley, Urban Rivers, (708) 606-0637, nick@urbanriv.org

Greenprint was the lead landscape architect for the Wild Mile Framework Plan, a community-led vision for the world's first 17-acre floating eco-park along the Chicago River. The Wild Mile is the latest in a series of interventions in the Chicago River aimed at transforming an industrialized, human-made stretch of the North Branch Canal and Turning Basin on Goose Island's east side into a corridor serving

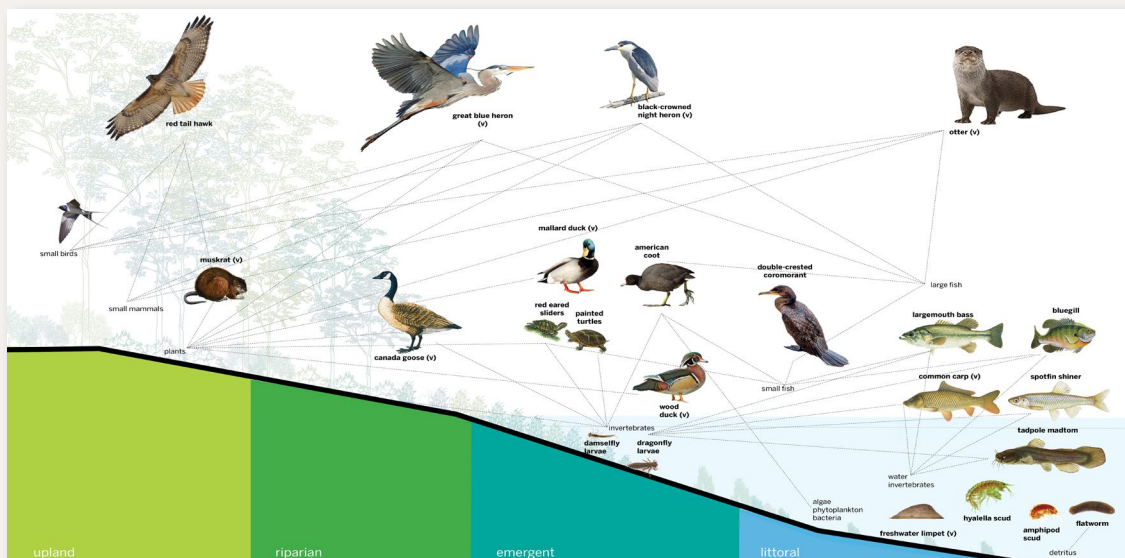
people, wildlife and the environment. The Framework Plan advances a community-led vision of renewed urban ecology that strengthens neighborhood connectivity, improves water quality and supports vibrant ecosystems.

While the river west of Goose Island remains navigable for industrial traffic, the Wild Mile is a more recreation-focused stretch. It features floating gardens, dedicated habitat for native wildlife, public walkways, kayak launches and other amenities, restoring the river as a public trust.

The project sets a new standard for urban waterfront and riverfront design, demonstrating innovative ways to reintroduce nature to industrial waterways while connecting communities with their environment. Though centered on the Chicago River, its principles and components are adaptable for other urban waterway and wildlife corridor restoration efforts.

Awards

[National ASLA Honor Award, Urban Design, 2024;](#)
[ILASLA Honor Award, Planning and Analysis, 2019;](#)
[ILAPA, Strategic Plan Award, 2019;](#) [ILASLA Honor Award, Design, 2017](#)



HABITAT RESTORATION

Plan visual showing how restored riparian zones address gaps in the food chain, providing food for all life and attracting charismatic megafauna back to the river.



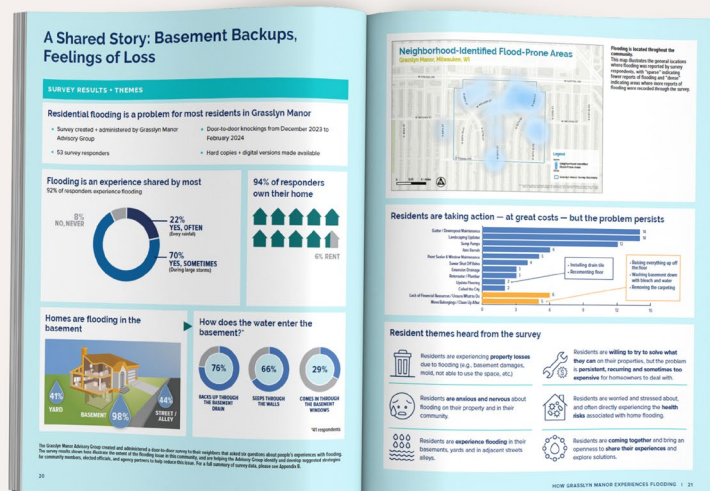
Grasslyn Manor Stormwater Strategy

- **Location:** Milwaukee, WI
- **Client:** Grasslyn Manor Advisory Group
- **Scope of Services:** Community engagement and equity-centered outreach, assessment of neighborhood-scale stormwater challenges, development of practical stormwater strategies for homeowners, creation of user-friendly educational tools, integration of resident input into planning, development of proactive stormwater management recommendations
- **Duration:** 2023–2025
- **Cost of Services:** \$120K
- **Team:** Kristin Ihnchak, Sydney VanKuren, Aya O'Connor, Hannah Muzzarelli
- **Reference:** Steve O'Connell, Sherman Park Advisory Group, oconsase@gmail.com

Stormwater challenges in the Grasslyn Manor neighborhood of Milwaukee are driven by a combination of long-standing physical conditions — such as historic waterways and regional topography — and more recent social factors, including development and inconsistent reporting of basement backups. These issues, along with infiltration and inflow, have led to ongoing flooding concerns.

In July 2023, residents launched “Help Build the Ark,” a community effort to share personal stories and spark collective action.

With funding from the Builders Initiative, Greenprint provided technical assistance to the Advisory Group and community engagement support for their resident-led effort to identify practical solutions and financial resources to help homeowners reduce flooding risks. The Advisory Group met monthly for 11 months to guide the planning process, shape a shared vision, and engage neighbors through interviews, surveys and public meetings. Greenprint facilitated the work and, directed by community input, developed two community assets: the [Neighborhood Stormwater Strategies for Grasslyn Manor](#), a resident-informed plan for equitable, proactive stormwater management; and the [Residential Handbook](#), a tool for homeowners that included stormwater management best practices and resources including local programs and funding opportunities. The trust that was built in the community during the water investigation led to continued investment by the City with the Grasslyn Manor Private Property Infiltration and Inflow Project. Greenprint is convening a new Advisory Group to encourage residents to voluntarily take part in a grant-funded program to replace aging laterals for free to further reduce flooding and basement backups.



RESIDENT INPUT DRIVES SOLUTIONS

Neighborhood Stormwater Strategies for Grasslyn Manor, written and designed by Greenprint



“Stitching It Together” Framework Plan

- **Location:** Chicago, IL
- **Client:** City of Chicago Department of Planning and Development, SOM
- **Scope of Services:** Public realm improvement, community-driven framework development, vacant and underutilized land transformation, green open space design
- **Duration:** 2023–2024
- **Cost of Services:** \$30K
- **Team:** Peter Graves
- **Reference:** Jennifer Skowlund, AIA, SOM; (312) 360-4473, jennifer.skowlund@som.com

The “Stitching It Together” Plan project aims to strengthen connections between the Brighton Park and Gage Park neighborhoods on Chicago’s southwest side, enhancing access to the newly

built Chicago Park District headquarters at 48th Street and Western Boulevard. Greenprint’s landscape architecture focused on improving the public realm by creating more accessible, vibrant and interconnected open spaces within this area. The neighborhoods have experienced significant changes, including shifts in industry, commerce and demographics, and face challenges like limited park space and fragmented connections between residential and industrial zones.

This initiative envisions a cohesive community-driven framework to address these issues, leveraging vacant or underutilized land to meet local needs and enhance public health and safety. Key goals include improving infrastructure, supporting local businesses and reducing the impact of industrial operations. Our landscape architecture strategies focus on creating new connections, enhancing existing spaces and developing green open spaces that foster community engagement.



PLANTING FOR HEALTHY ECOSYSTEMS

“Stitching It Together” Framework Plan showing environmental remediation through native plants



Resumes + Required Forms



Nicole Chavas

PRESIDENT + CHIEF OPERATING OFFICER

Role: Senior Advisor

EDUCATION

- M.B.A., Northwestern University
- Master of Accountancy, University of Wisconsin-Madison
- B.S., Accounting, University of Wisconsin-Madison

20 YEARS OF EXPERIENCE

11 years with Greenprint

CONTACT

(773) 612-2906

[nchavas@](mailto:nchavas@greenprintpartners.com)

greenprintpartners.com

Chicago

PREVIOUS EMPLOYMENT

- Covariance Capital Management, Chicago, IL
- Man Investments, Chicago, IL
- Grosvenor Capital Management, Chicago, IL

EXPERIENCE

Climate Ready Rainscapes

Oak Park, IL | Role: Principal-In-Charge

Greenprint leads Oak Park's Climate Ready Rainscapes program, which provides grants and technical support for residential green infrastructure. The team manages program design, outreach, contractor training and equity strategy development. Greenprint also created an assessment process for up to 40 properties annually and established metrics to track progress, reduce flooding and advance climate resilience through community-driven, nature-based stormwater solutions.

Fresh Coast Green Communities

Milwaukee County, WI | Role: Senior Advisor

Greenprint is working with the Milwaukee Metropolitan Sewerage District to identify and implement green infrastructure projects that collectively manage 9–12 million gallons of stormwater. Greenprint leads site design, permitting and construction while also spearheading community engagement to ensure projects deliver meaningful benefits and align with local needs.

Vermont Manufactured Housing Communities Initiative

Western Vermont | Role: Senior Advisor

Greenprint leads the Vermont Department of Environmental Conservation's 3-Acre Manufactured Housing Communities Initiative, helping over a dozen communities meet stormwater requirements under the Vermont Clean Water Act. The program provides funding, technical assistance and resident engagement to support compliance. Greenprint's work advances the state's clean water goals while fostering healthier, more resilient neighborhoods.

Oak Park Climate Action Network DOE Grant Application

Oak Park, IL | Role: Senior Advisor

Greenprint partnered with OPCAN and One Earth Collective to develop the Heat Pump Neighbors program model and submit a grant application to the Department of Energy's Buildings Upgrade Prize with a goal of accelerating heat pump adoption in single family homes across Oak Park. Nicole led weekly calls with OPCAN members, facilitated a strategic process to define the program model, and prepared the application.



Kristin Ihnchak

VICE PRESIDENT OF PLANNING + ENGAGEMENT

Role: Principal-In-Charge

EDUCATION

- Masters of Urban Planning + Policy, University of Illinois, Chicago
- B.A., Political Science, Lake Forest College

21 YEARS OF EXPERIENCE

4 years with Greenprint

CONTACT

(847) 275-0356

kihnchak@greenprintpartners.com
Chicago

PREVIOUS EMPLOYMENT

- Chicago Metropolitan Agency for Planning, Chicago, IL
- Farr Associates, Chicago, IL

EXPERIENCE

Climate Ready Rainscapes

Oak Park, IL | Role: Phase 1 Project Manager

Greenprint leads Oak Park's Climate Ready Rainscapes program, which provides grants and technical support for residential green infrastructure. The team manages program design, outreach, contractor training and equity strategy development. Greenprint also created an assessment process for up to 40 properties annually and established metrics to track progress, reduce flooding and advance climate resilience through community-driven, nature-based stormwater solutions.

Chicago Green Stormwater Infrastructure Strategy

Chicago, IL | Role: Principal-In-Charge

Greenprint is leading the development of Chicago's Green Stormwater Infrastructure Strategy, a citywide initiative spearheaded by the Chicago Department of Environment to enhance stormwater management and resilience, reduce urban flooding and ensure equitable access to stormwater infrastructure. The strategy will serve as a data-driven framework for prioritizing GSI investments, guiding future funding decisions, policy development and community engagement strategies.

Wentworth Avenue Green Vision Plan

Calumet City, IL | Role: Principal-In-Charge

Greenprint led the development of a green vision plan funded by the Robert Wood Johnson Foundation. Community engagement informed stormwater, bike-ped and placemaking recommendations. The result was a neatly designed plan document, presenting options, design concepts and funding strategies for Calumet City to pursue.

Grasslyn Manor Stormwater Strategy

Milwaukee, WI | Role: Principal-In-Charge

Greenprint provided technical assistance and engagement support for a resident-led effort in Milwaukee's Grasslyn Manor to address chronic flooding. Through surveys, meetings and community input, Greenprint helped develop a neighborhood stormwater plan focused on equitable, nature-based solutions, supported by the Builders Initiative and informed by residents' lived experiences.



Sydney VanKuren, AICP

DIRECTOR OF PLANNING

Role: Project Manager

EDUCATION

- Master of Urban Planning + Policy, University of Illinois, Chicago
- B.S., Natural Resources, Cornell

11 YEARS OF EXPERIENCE

2 years with Greenprint

CERTIFICATIONS

LEED Green Associate

CONTACT

(773) 217-0605
svankuren@
greenprintpartners.com
Chicago, IL

PREVIOUS EMPLOYMENT

- MUSE Community + Design, Chicago, IL
- Farr Associates, Chicago, IL

EXPERIENCE

Chicago Green Stormwater Infrastructure Strategy

Chicago, IL | Role: Project Manager

Greenprint is leading the development of Chicago's Green Stormwater Infrastructure Strategy, a citywide initiative spearheaded by the Chicago Department of Environment to enhance stormwater management and resilience, reduce urban flooding and ensure equitable access to stormwater infrastructure. The strategy will serve as a data-driven framework for prioritizing GSI investments, guiding future funding decisions, policy development and community engagement strategies.

Wentworth Avenue Green Vision Plan

Calumet City, IL | Role: Project Manager

Greenprint led the development of a green vision plan funded by the Robert Wood Johnson Foundation. Community engagement informed stormwater, bike-ped and placemaking recommendations. The result was a neatly designed plan document, presenting options, design concepts and funding strategies for Calumet City to pursue.

Grasslyn Manor Stormwater Strategy

Milwaukee, WI | Role: Project Manager

Greenprint provided technical assistance and engagement support for a resident-led effort in Milwaukee's Grasslyn Manor to address chronic flooding. Through surveys, meetings and community input, Greenprint helped develop a neighborhood stormwater plan focused on equitable, nature-based solutions, supported by the Builders Initiative and informed by residents' lived experiences

Robbins Heritage Trail Plan

Robbins, IL | Role: Project Manager

Greenprint is leading a plan funded by the Robert Wood Johnson Foundation to advance infrastructure and placemaking improvements that honor the Village of Robbins' cultural, natural and historical heritage. In partnership with a residential steering committee, the plan outlines strategies to highlight and connect historic sites, including an ADA-accessible boat launch for the nearby African American Heritage Water Trail and a memorial garden honoring local Tuskegee Airmen. Both projects celebrate local history while enhancing public space, access and resilience.



Anna Jentz

PLANNER

Role: Project Associate

EDUCATION

B.A., Environmental
Policy, Loyola
University

4 YEARS OF EXPERIENCE

4 years with Greenprint

CONTACT

(651) 724-1064

[ajentz@](mailto:ajentz@greenprintpartners.com)

greenprintpartners.com

Chicago, IL

PREVIOUS EMPLOYMENT

- Americorps,
St. Paul, MN
- Plant Chicago,
Chicago, IL

EXPERIENCE

Chicago Green Stormwater Infrastructure Strategy

Chicago, IL | Role: Project Associate

Greenprint is leading the development of Chicago's Green Stormwater Infrastructure Strategy, a citywide initiative spearheaded by the Chicago Department of Environment to enhance stormwater management and resilience, reduce urban flooding and ensure equitable access to stormwater infrastructure. The strategy will serve as a data-driven framework for prioritizing GSI investments, guiding future funding decisions, policy development and community engagement strategies.

Wentworth Avenue Green Vision Plan

Cook County, IL | Role: Assistant Project Manager

Greenprint led the development of a green vision plan funded by the Robert Wood Johnson Foundation. Community engagement informed stormwater, bike-ped and placemaking recommendations. The result was a neatly designed plan document, presenting options, design concepts and funding strategies for Calumet City to pursue.

Robbins Heritage Trail Plan

Robbins, IL | Role: Assistant Project Manager

Greenprint is leading a plan funded by the Robert Wood Johnson Foundation to advance infrastructure and placemaking improvements that honor the Village of Robbins' cultural, natural and historical heritage. In partnership with a residential steering committee, the plan outlines strategies to highlight and connect historic sites, including an ADA-accessible boat launch for the nearby African American Heritage Water Trail and a memorial garden honoring local Tuskegee Airmen. Both projects celebrate local history while enhancing public space, access and resilience.



Raul Justo

PROGRAM SPECIALIST

Role: Project Associate

EDUCATION

- Master of Urban Planning + Policy, University of Illinois, Chicago
- B.A., Urban Studies + Planning, San Francisco State University

7 YEARS OF EXPERIENCE

1+ years with Greenprint

CERTIFICATIONS

Certified Diversity Professional,
The Institute for Diversity Certification

LANGUAGES

Bilingual
English/Spanish

CONTACT

(415) 410-7933
rjusto@greenprintpartners.com
Chicago, IL

PREVIOUS EMPLOYMENT

- Third Sector, Chicago, IL
- Chicago Housing Authority, Chicago, IL
- Mayor's Office, HOPE SF Initiative, San Francisco, CA

EXPERIENCE

Climate Ready Rainscapes

Oak Park, IL | Role: Enrollment Lead

Greenprint leads Oak Park's Climate Ready Rainscapes program, which provides grants and technical support for residential green infrastructure. The team manages program design, outreach, contractor training and equity strategy development. Greenprint also created an assessment process for up to 40 properties annually and established metrics to track progress, reduce flooding and advance climate resilience through community-driven, nature-based stormwater solutions.

Chicago Green Infrastructure Strategy

Chicago, IL | Role: Project Associate

Greenprint is leading the development of Chicago's Green Stormwater Infrastructure Strategy, a citywide initiative spearheaded by the Chicago Department of Environment to enhance stormwater management and resilience, reduce urban flooding and ensure equitable access to stormwater infrastructure. The strategy will serve as a data-driven framework for prioritizing GSI investments, guiding future funding decisions, policy development and community engagement strategies.

Robbins Heritage Trail Plan

Robbins, IL | Role: Project Associate

Greenprint is leading a plan funded by the Robert Wood Johnson Foundation to advance infrastructure and placemaking improvements that honor the Village of Robbins' cultural, natural and historical heritage. In partnership with a residential steering committee, the plan outlines strategies to highlight and connect historic sites, including an ADA-accessible boat launch for the nearby African American Heritage Water Trail and a memorial garden honoring local Tuskegee Airmen. Both projects celebrate local history while enhancing public space, access and resilience.



Peter Graves, PLA, CDT

DIRECTOR OF LANDSCAPE ARCHITECTURE

Role: Senior Advisor, Landscape Architecture

EDUCATION

- Master of Landscape Architecture, Louisiana State University
- B.A., Urban Studies, Trinity University

15 YEARS OF EXPERIENCE

6 years with Greenprint

REGISTRATIONS

Professional Landscape Architect:
Illinois, Texas

CONTACT

(512) 470-8556
pgraves@
greenprintpartners.com
Chicago, IL

PREVIOUS EMPLOYMENT

- Omni Workshop, Chicago, IL
- Design Workshop, Chicago, IL
- Studio Outside, Dallas, TX

EXPERIENCE

“Stitching It Together” Framework Plan

Chicago, IL | Role: Landscape Architecture Lead

Greenprint led landscape architecture strategies for the Stitching It Together Plan, enhancing connectivity between Brighton Park and Gage Park. The team focused on creating accessible, vibrant public spaces and reimagining underutilized land to meet community needs. The plan supported improved infrastructure, reduced industrial impacts and fostered community engagement through a cohesive, resident-informed framework that addressed environmental, social and economic challenges.

Wild Mile Framework Plan

Chicago, IL | Role: Post-occupancy Landscape Advisor

Greenprint led the landscape architecture for the framework plan for the Wild Mile, a 17-acre floating eco-park on Chicago's North Branch Canal. The project transforms an industrial waterway into a recreational, ecological corridor with floating gardens, public walkways and kayak launches, improving water quality, supporting ecosystems and setting a new standard for urban waterfront design.

Ronan Park

Chicago, IL | Role: Principal-In-Charge

The Ronan Park improvements began as a community-driven project to enhance sites along Lawrence Avenue and the Chicago River, creating a neighborhood gateway, nature access and green infrastructure to address flooding and runoff. The project aims to use the river's proximity to foster equitable economic growth along the Lawrence Avenue Corridor. Collaborating with architects, designers, urban planners and the community, Greenprint developed a vision that included improved pedestrian and bike access, enhanced aesthetics, a central gathering hub, and better stormwater infrastructure. The plan also supports the Global Gardens Community Garden's growth.



Dena van der Wal, PLA, ASLA

ASSOCIATE / LANDSCAPE ARCHITECT

Role: Landscape Architecture Lead

EDUCATION

- Master of Landscape Architecture, IIT
- B.A., Gender Studies, The University of Chicago
- The School For International Training / Universiteit van Amsterdam, The Netherlands

11 YEARS OF EXPERIENCE

4 years with Greenprint

REGISTRATIONS

Professional Landscape Architect:
Illinois, Michigan

CONTACT

(312) 574-0658
dvanderwal@greenprintpartners.com
Chicago, IL

PREVIOUS EMPLOYMENT

- Omni Workshop, Chicago, IL
- The Lakota Group, Chicago, IL
- Jacobs/Ryan Associates, Chicago, IL
- WRD Environmental, Chicago, IL

EXPERIENCE

Robbins Heritage Trail Plan

Robbins, IL | Role: Landscape Architecture Lead

Greenprint is leading a plan funded by the Robert Wood Johnson Foundation to advance infrastructure and placemaking improvements that honor the Village of Robbins' cultural, natural and historical heritage. In partnership with a residential steering committee, the plan outlines strategies to highlight and connect historic sites, including an ADA-accessible boat launch for the nearby African American Heritage Water Trail and a memorial garden honoring local Tuskegee Airmen. Both projects celebrate local history while enhancing public space, access and resilience.

Oak Park Green Schools Analysis

Oak Park, IL | Role: Project Manager

Greenprint is supporting the Cross Agency Sustainability Exchange — a collaboration between the Village of Oak Park, District 97 and District 200 — focused on developing a green infrastructure action plan for school properties. The design team assessed 11 schools through field visits and analysis to identify opportunities to enhance existing or introduce new green stormwater infrastructure strategies for each school.

Ronan Park

Chicago, IL | Role: Project Manager

The Ronan Park improvements began as a community-driven project to enhance sites along Lawrence Avenue and the Chicago River, creating a neighborhood gateway, nature access and green infrastructure to address flooding and runoff. The project aims to use the river's proximity to foster equitable economic growth along the Lawrence Avenue Corridor. Collaborating with architects, designers, urban planners and the community, Greenprint developed a vision that included improved pedestrian and bike access, enhanced aesthetics, a central gathering hub, and better stormwater infrastructure. The plan also supports the Global Gardens Community Garden's growth.



Eneyda Salcedo, ASLA

LANDSCAPE DESIGNER

Role: Landscape Designer

EDUCATION

- Master of City/Urban Planning, University of Illinois at Chicago
- Bachelor of Landscape Architecture, University of Illinois Urbana-Champaign

<1 YEAR OF EXPERIENCE

<1 year with Greenprint

CONTACT

(312) 379-9397

esalcedo@greenprintpartners.com

Chicago, IL

PREVIOUS EMPLOYMENT

Design Workshop,
Chicago

EXPERIENCE

Oak Park Green Schools Analysis

Oak Park, IL | Role: Landscape Designer

Greenprint is supporting the Cross Agency Sustainability Exchange — a collaboration between the Village of Oak Park, District 97 and District 200 — focused on developing a green infrastructure action plan for school properties. The design team assessed 11 schools through field visits and analysis to identify opportunities to enhance existing or introduce new green stormwater infrastructure strategies for each school.

Confidential Memorial

Chicago, IL | Role: Landscape Designer

Greenprint is leading landscape architectural design for a confidential, in-progress Memorial in Chicago. As part of the design process, the design team listened to victims and those affected by the events inspiring the memorial, and integrated the feedback into the memorial's landscape design. The community-informed design of the landscape serves to educate and inspire future generations, while providing a sustainable habitat for wildlife and environmental benefits like green stormwater management.

Michigan Avenue Median Planters

Chicago, IL | Role: Landscape Designer

Greenprint is leading the Chicago Department of Transportation's design and installation oversight of Michigan Avenue's famed annual floral displays. The design team creates seasonal designs, each with a theme that changes yearly, and oversees the installation of the display each Spring. The iconic Michigan Avenue designs are a landmark for the City of Chicago and contribute to a sense of civic pride.



Alex Heidtke, PE

ENGINEERING MANAGER

Role: Engineering Lead

EDUCATION

B.A., Civil +
Environmental
Engineering, University
of Illinois at
Urbana-Champaign

12 YEARS OF EXPERIENCE

4 years with Greenprint

REGISTRATIONS

Professional Engineer:
California, Illinois,
Missouri,
Pennsylvania,
Washington

CONTACT

(847) 899-6835

[aheidtke@
greenprintpartners.com](mailto:aheidtke@greenprintpartners.com)

Chicago, IL

PREVIOUS EMPLOYMENT

- Terra Engineering,
Chicago, IL
- Conservation
Design Forum,
Lombard, IL

EXPERIENCE

Chicago Green Stormwater Infrastructure Strategy

Cook County, IL | Role: Engineering Lead

Greenprint is leading the development of Chicago's Green Stormwater Infrastructure Strategy, a citywide initiative spearheaded by the Chicago Department of Environment to enhance stormwater management and resilience, reduce urban flooding and ensure equitable access to stormwater infrastructure. The strategy will serve as a data-driven framework for prioritizing GSI investments, guiding future funding decisions, policy development and community engagement strategies.

Wentworth Avenue Green Vision Plan

Cook County, IL | Role: Engineering Lead

Greenprint led the development of a green vision plan funded by the Robert Wood Johnson Foundation. Community engagement informed stormwater, bike-ped and placemaking recommendations. The result was a neatly designed plan document, presenting options, design concepts and funding strategies for Calumet City to pursue.

Robbins Heritage Trail Plan

Chicago, IL | Role: Engineering Lead

Greenprint is leading a plan funded by the Robert Wood Johnson Foundation to advance infrastructure and placemaking improvements that honor the Village of Robbins' cultural, natural and historical heritage. In partnership with a residential steering committee, the plan outlines strategies to highlight and connect historic sites, including an ADA-accessible boat launch for the nearby African American Heritage Water Trail and a memorial garden honoring local Tuskegee Airmen. Both projects celebrate local history while enhancing public space, access and resilience.



Aya O'Connor

DIRECTOR OF MARKETING

Role: Communications Lead

EDUCATION

B.A., Graphic Design +
Japanese, University
of Notre Dame

18 YEARS OF EXPERIENCE

1+ years with
Greenprint

CERTIFICATIONS

Strategies that Build
Winning Brands,
Northwestern
University

CONTACT

(512) 264-4266
[aoconnor@
greenprintpartners.com](mailto:aoconnor@greenprintpartners.com)
Chicago, IL

PREVIOUS EMPLOYMENT

- Kirkland & Ellis LLP,
Chicago, IL
- Canright
Communications,
Chicago, IL

EXPERIENCE

Climate Ready Rainscapes

Oak Park, IL | Role: Communications Lead

Greenprint leads Oak Park's Climate Ready Rainscapes program, which provides grants and technical support for residential green infrastructure. The team manages program design, outreach, contractor training and equity strategy development. Greenprint also created an assessment process for up to 40 properties annually and established metrics to track progress, reduce flooding and advance climate resilience through community-driven, nature-based stormwater solutions.

City of Chicago Green Infrastructure Strategy

Oak Park, IL | Role: Communications Lead

Greenprint is leading the development of Chicago's Green Stormwater Infrastructure Strategy, a citywide initiative spearheaded by the Chicago Department of Environment to enhance stormwater management and resilience, reduce urban flooding and ensure equitable access to stormwater infrastructure. The strategy will serve as a data-driven framework for prioritizing GSI investments, guiding future funding decisions, policy development and community engagement strategies.

Wentworth Avenue Green Vision Plan

Calumet City, IL | Role: Communications Lead

Greenprint led the development of a green vision plan funded by the Robert Wood Johnson Foundation. Community engagement informed stormwater, bike-ped and placemaking recommendations. The result was a neatly designed plan document, presenting options, design concepts and funding strategies for Calumet City to pursue.

Grasslyn Manor Stormwater Strategy

Milwaukee, WI | Role: Communications Lead

Greenprint provided technical assistance and engagement support for a resident-led effort in Milwaukee's Grasslyn Manor to address chronic flooding. Through surveys, meetings and community input, Greenprint helped develop a neighborhood stormwater plan focused on equitable, nature-based solutions, supported by the Builders Initiative and informed by residents' lived experiences.



Hannah Muzzarelli

MARKETING COORDINATOR

Role: Communications Support

EDUCATION

B.A., Political Science,
Ohio State University

2 YEARS OF EXPERIENCE

2 years with Greenprint

CERTIFICATIONS

A to Z Grant Writing,
University of Cincinnati

CONTACT

(513) 478-6787

[hmuzzarelli@
greenprintpartners.com](mailto:hmuzzarelli@greenprintpartners.com)
Chicago, IL

PREVIOUS EMPLOYMENT

- Impact Ohio,
Columbus, OH
- Ohio House of
Representatives,
Columbus, OH

EXPERIENCE

City of Chicago Green Infrastructure Strategy

Oak Park, IL | Role: Communications Support

Greenprint is leading the development of Chicago's Green Stormwater Infrastructure Strategy, a citywide initiative spearheaded by the Chicago Department of Environment to enhance stormwater management and resilience, reduce urban flooding and ensure equitable access to stormwater infrastructure. The strategy will serve as a data-driven framework for prioritizing GSI investments, guiding future funding decisions, policy development and community engagement strategies.

Wentworth Avenue Green Vision Plan

Calumet City, IL | Role: Communications Support

Greenprint led the development of a green vision plan funded by the Robert Wood Johnson Foundation. Community engagement informed stormwater, bike-ped and placemaking recommendations. The result was a neatly designed plan document, presenting options, design concepts and funding strategies for Calumet City to pursue.

Grasslyn Manor Stormwater Strategy

Milwaukee, WI | Role: Communications Support

Greenprint provided technical assistance and engagement support for a resident-led effort in Milwaukee's Grasslyn Manor to address chronic flooding. Through surveys, meetings and community input, Greenprint helped develop a neighborhood stormwater plan focused on equitable, nature-based solutions, supported by the Builders Initiative and informed by residents' lived experiences.

Robbins Heritage Trail Plan

Robbins, IL | Role: Communications Lead

Greenprint is leading a plan funded by the Robert Wood Johnson Foundation to advance infrastructure and placemaking improvements that honor the Village of Robbins' cultural, natural and historical heritage. In partnership with a residential steering committee, the plan outlines strategies to highlight and connect historic sites, including an ADA-accessible boat launch for the nearby African American Heritage Water Trail and a memorial garden honoring local Tuskegee Airmen. Both projects celebrate local history while enhancing public space, access and resilience.

Section VI
Pricing Proposal Form

The RESPONDENT proposes to furnish all materials and labor required to complete the Work in accordance with the attached specifications and at the prices indicated below.

Task	Task cost breakdown	Total Task Cost
Task 1: Define Green Infrastructure and Enhanced Park Management	Landscape scan of existing GI/EPM definitions and measurement frameworks: \$5,775 Community and stakeholder engagement: \$13,300 Definition development and refinement: \$5,200 Meetings with Commissions/Board and preparation of materials: \$2,600 Project management and VOP coordination: \$5,400	\$32,275
Task 2: Determine existing conditions and areas of opportunity	Review of existing materials and data collection: \$5,940 Mapping, GIS analysis, and site visits: \$11,880 Stakeholder engagement: \$4,290 Strategy development: \$10,065 Summary presentation: \$3,630 Project management and VOP coordination: \$10,800	\$46,605
Task 3: Plan Development	Draft plan development and design: \$21,115 Review cycles and integration of staff/public/partner feedback: \$5,280 Public open house and Board/commission presentations: \$8,040 Final plan transmittal: \$1,320 Project management and VOP coordination: \$5,400	\$41,155

SECTION VII
ORGANIZATION OF FIRM

Please fill out the applicable section:

A. Corporation:

The Contractor is a corporation, legally named _____ and is organized and existing in good standing under the laws of the State of _____. The full names of its Officers are:

President _____

Secretary _____

Treasurer _____

Registered Agent Name and Address: _____

The corporation has a corporate seal. (In the event that this Proposal is executed by a person other than the President, attach hereto a certified copy of that section of Corporate By-Laws or other authorization by the Corporation that permits the person to execute the offer for the corporation.)

B. Sole Proprietor:

The Contractor is a Sole Proprietor. If the Contractor does business under an Assumed Name, the

Assumed Name is _____, which is registered with the Cook County Clerk. The Contractor is otherwise in compliance with the Assumed Business Name Act, 805 ILCS 405/0.01, et. seq.

C. Partnership:

The Contractor is a Partnership which operates under the name Fresh Coast Capital LLC DBA Greenprint Partners

The following are the names, addresses and signatures of all partners:

April Mendez,
17 North State Street Suite 1400, Chicago, IL 60602



Signature

Nicole Chavas
17 N. State St. Suite 1400, Chicago, IL 60602



Signature

(Attach additional sheets if necessary.) If so, check here _____.

If the partnership does business under an assumed name, the assumed name must be registered with the Cook County Clerk and the partnership is otherwise in compliance with the Assumed Business Name Act, 805 ILCS 405/0.01, et. seq.

D. Affiliates: The name and address of any affiliated entity of the business, including a description of the affiliation: _____

Signature of Owner

[THIS SPACE LEFT INTENTIONALLY BLANK]

SECTION VIII
COMPLIANCE AFFIDAVIT

I, N. COLE CHAVAS, (Print Name) being first duly sworn on oath depose and state:

1. I am the (title) PRESIDENT of the Proposing Firm and am authorized to make the statements contained in this affidavit on behalf of the firm;
2. I have examined and carefully prepared this Proposal based on the request and have verified the facts contained in the Proposal in detail before submitting it;
3. The Proposing Firm is organized as indicated above on the form entitled "Organization of Proposing Firm."
4. I authorize the Village of Oak Park to verify the Firm's business references and credit at its option;
5. Neither the Proposing Firm nor its affiliates¹ are barred from proposing on this project as a result of a violation of 720 ILCS 5/33E-3 or 33E-4 related to bid rigging and bid rotating, or Section 2-6-12 of the Oak Park Village Code related to "Proposing Requirements."
6. The Proposing Firm has completed the M/W/DBE status indicated below on the form entitled "EEO Report."
7. Neither the Proposing Firm nor its affiliates are barred from enter into an agreement with the Village of Oak Park because of any delinquency in the payment of any debt or tax owed to the Village except for those taxes which the Proposing Firm is contesting, in accordance with the procedures established by the appropriate revenue act, liability for the tax or the amount of the tax. I understand that making a false statement regarding delinquency in taxes is a Class A Misdemeanor and, in addition, voids the agreement and allows the Village of Oak Park to recover all amounts paid to the Proposing Firm under the agreement in civil action.
8. I am familiar with Section 13-312 through 13-3-4 of the Oak Park Village Code relating to Fair Employment Practices and understand the contents thereof; and state that the Proposing Firm is an "Equal Opportunity Employer" as defined by Section 2000(E) of Chapter 21, Title 42 of the United States Code and Federal Executive Orders #11246 and #11375 which are incorporated herein by reference. **Also complete the attached EEO Report or Submit an EEO-1.**
9. I certify that the Firm is in compliance with the Drug Free Workplace Act, 41 U.S.C.A, 702

¹ Affiliates means: (i) any subsidiary or parent of the agreeing business entity, (ii) any member of the same unitary business group; (iii) any person with any ownership interest or distributive share of the agreeing business entity in excess of 7.5%; (iv) any entity owned or controlled by an executive employee, his or her spouse or minor children of the agreeing business entity.

Signature: _____

Name and address of Business: FRESH COAST CAPITAL LLC D/B/A GREENPRINT PARTNERS

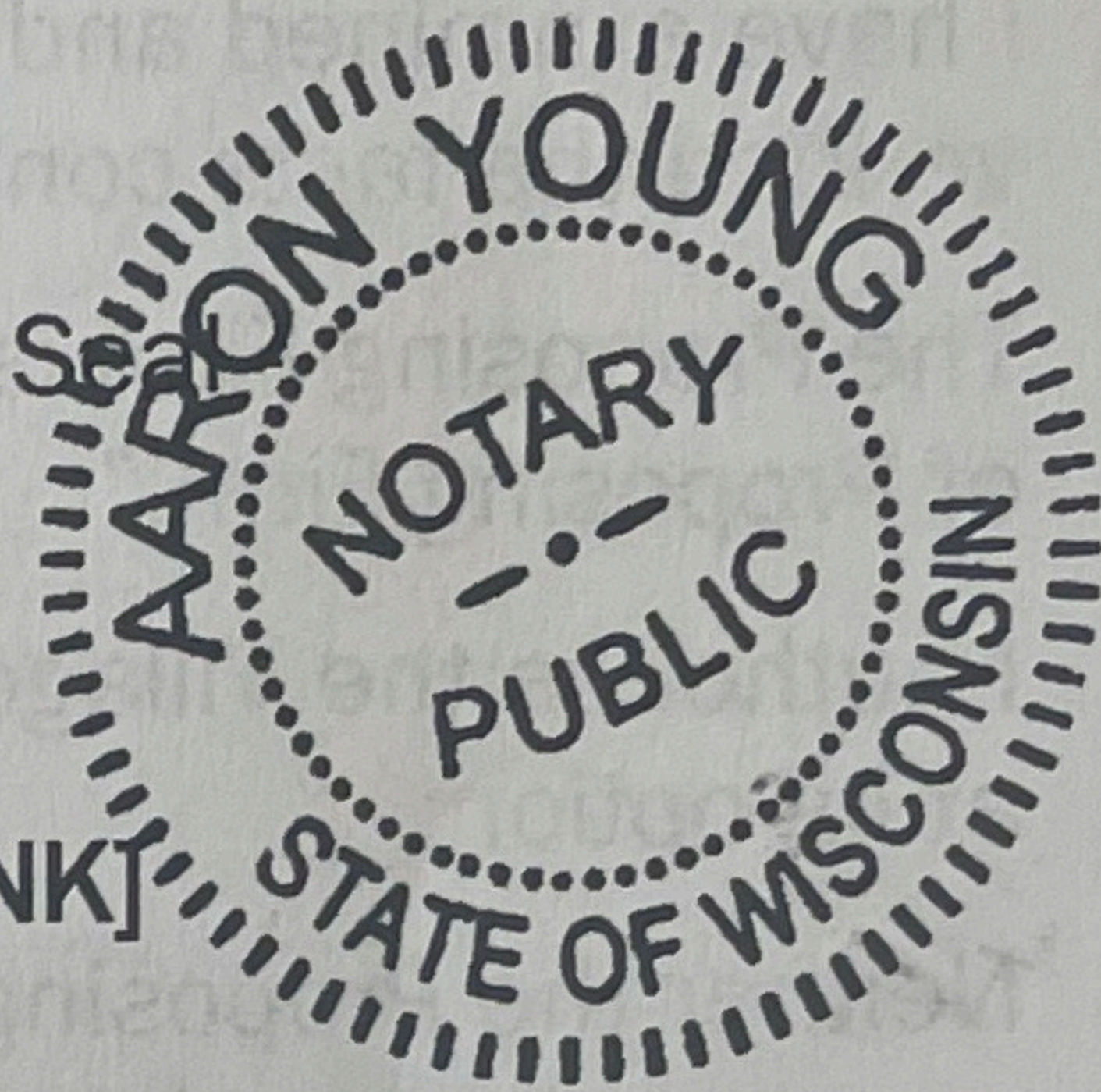
Telephone 773-612-2906

E-Mail nchavala@greenprintpartners.com

Subscribed to and sworn before me this 12th day of June, 2024.

[Signature]
Notary Public

- Notary Public Seal



[THIS SPACE LEFT INTENTIONALLY BLANK]

SECTION IX
M/W/DBE STATUS AND EEO REPORT

Failure to respond truthfully to any questions on this form, failure to complete the form or failure to cooperate fully with further inquiry by the Village of Oak Park will result in disqualification of this Proposal.

Fresh Coast Capital LLC DBA Greenprint Partners

1. Contractor Name: _____

2. Check here if your firm is:

- ☒ Minority Business Enterprise (MBE) (A firm that is at least 51% owned, managed and controlled by a Minority.)
- ☒ Women's Business Enterprise (WBE) (A firm that is at least 51% owned, managed and controlled by a Woman.)
- ☐ Owned by a person with a disability (DBE) (A firm that is at least 51% owned by a person with a disability)
- ☐ None of the above

[Submit copies of any M/W/DBE certifications]

3. What is the size of the firm's current stable work force?

37 Number of full-time employees

_____ Number of part-time employees

4. Similar information will be requested of all sub-contractors performing work pursuant to the applicable agreement. Forms will be furnished to the lowest responsible contractor with the notice of agreement award, and these forms must be completed and submitted to the Village before the execution of the agreement by the Village.

Signature: 

Date: 6/12/2025

EEO REPORT

Please fill out this form completely. Failure to respond truthfully to any questions on this form, or failure to cooperate fully with further inquiry by the Village of Oak Park will result in disqualification of this Proposal. An incomplete form will disqualify your Proposal.

An EEO-1 Report may be submitted in lieu of this report

Contractor Name Fresh Coast Capital, LLC DBA Greenprint Partners

Total Employees 37

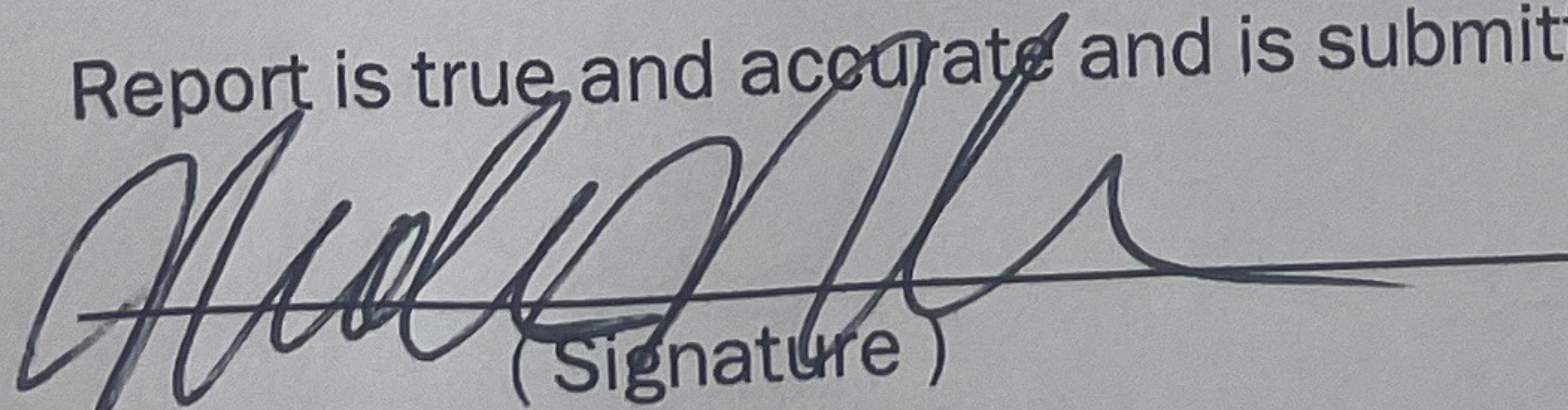
Job Category	Total # of Empl.	Total Males	Total Females	Black	Males				Females				Total Minorities
					Hispanic	American Indian	Alaskan Native	Asian & Pacific Islander	Hispanic	American Indian	Alaskan Native	Asian & Pacific Islander	
Officials & Managers	16	5	11	1				3					4
Professionals	21	5	16	1	3			3					7
Technicians													
Sales Workers													
Office & Clerical													
Semi-Skilled													
Laborers													
Service Workers													
Management Trainees													
Apprentices													

This completed and notarized report must accompany your Proposal. It should be attached to your Affidavit of Compliance. Failure to include it with your Proposal may disqualify you from consideration.

Nicole Chavas, being first duly sworn, deposes and says that
he/she is
(Name of Person Making Affidavit)

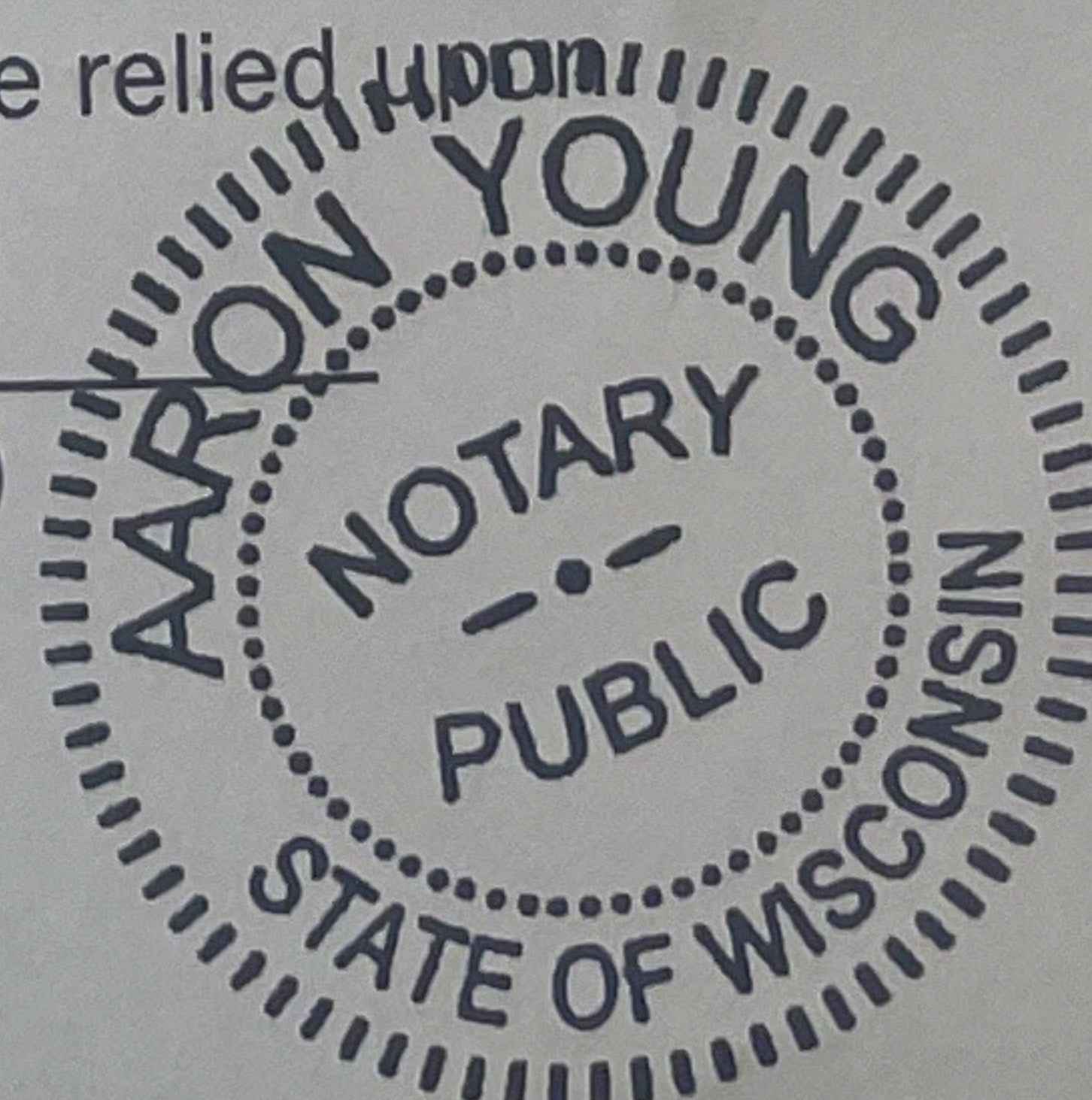
President + COO of Fresh Coast Capital LLC, DBA Greenprint Partners and that
the above EEO
(Title or Officer)

Report is true and accurate and is submitted with the intent that it be relied upon


(Signature)

6/12/2025

(Date)



SECTION X
REFERENCES AND LIST OF ENTITIES
FOR WHICH SERVICES HAVE BEEN PERFORMED

Contractors shall furnish at least three (3) entities, preferably municipalities, that have used the Contractor's for similar services within the last three (3) years.

REFERENCES:

1. Name of Entity Cook County Department of Environment and Sustainability

ADDRESS 69 W Washington St # 1900, Chicago, IL 60602

CONTACT Kate Agasie

**PHONE AND
EMAIL ADDRESS** kathleen.agasie@cookcountyil.gov, (312) 603-8200

**WORK
PERFORMED** Greenprint is the program manager for a residential retrofit
program funded by Cook County across multiple south
suburban communities.

2. Name of Entity City of Chicago Department of Environment

ADDRESS 121 N. LaSalle St., Chicago, IL 60602

CONTACT Jackie Rigley

**PHONE AND
EMAIL ADDRESS** (312)-639-9672, jacqueline.rigley@cityofchicago.org

WORK PERFORMED Greenprint is developing a city-wide green infrastructure plan.

3. Name of Entity Metropolitan Water Reclamation District of Greater Chicago

ADDRESS 100 East Erie Street Chicago, IL 60611

CONTACT Holly Sauter

PHONE AND EMAIL ADDRESS SauterH@mwr.org, (312) 286-6023

WORK PERFORMED Greenprint is developing a pilot suburban Cook County school retrofit program, starting with 4 properties.

LIST OF MUNICIPALITIES OR GOVERNMENT AGENCIES FOR WHICH THE CONTRACTOR HAS PROVIDED SERVICES DURING THE PAST FIVE (5) YEARS IF NOT NAMED ABOVE.

1. Municipality City of Chicago (various departments)

ADDRESS 121 N. LaSalle St., Chicago, IL 60602

CONTACT Various across DoE, DPD, CDOT, CPD

PHONE AND
EMAIL ADDRESS

WORK
PERFORMED

Green infrastructure planning

Master planning

Park design

Streetscape design

2. Municipality

Milwaukee Metropolitan Sewerage District

ADDRESS

260 W. Seeboth Ave., Milwaukee, WI 53204

CONTACT

Lisa Sasso

PHONE AND
EMAIL ADDRESS

414-225-2048, lsasso@mmsd.com

WORK
PERFORMED

Program Manager for Fresh Coast Green Communities, a
\$40M institutional green infrastructure retrofit program.