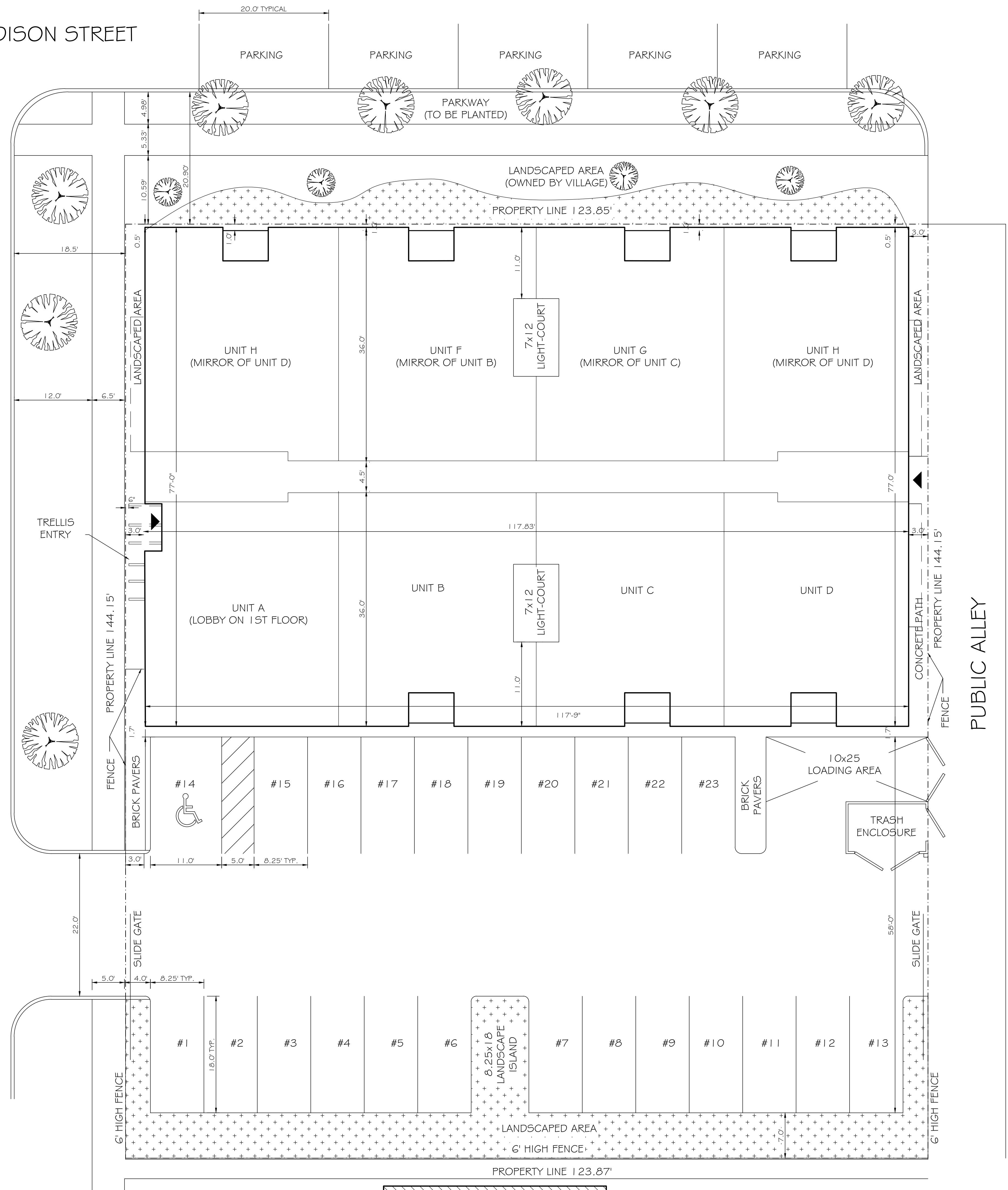


WEST MADISON STREET



SOUTH LYMAN AVENUE

N

SITE PLAN

1ST FLOOR GROSS SF = 8,742 SF
 2ND FLOOR GROSS SF = 8,902 SF
 3RD FLOOR GROSS SF = 8,902 SF
 TOTAL SF = 26,546 SF

- ZONING DISTRICT - MADISON STREET
- LOT AREA - 17,854.22 SF
- SETBACKS
 MADISON ST: 6"
 LYMAN AVE: 3"
 ALLEY: 3"
- BUILDING HEIGHT - 30'

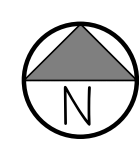
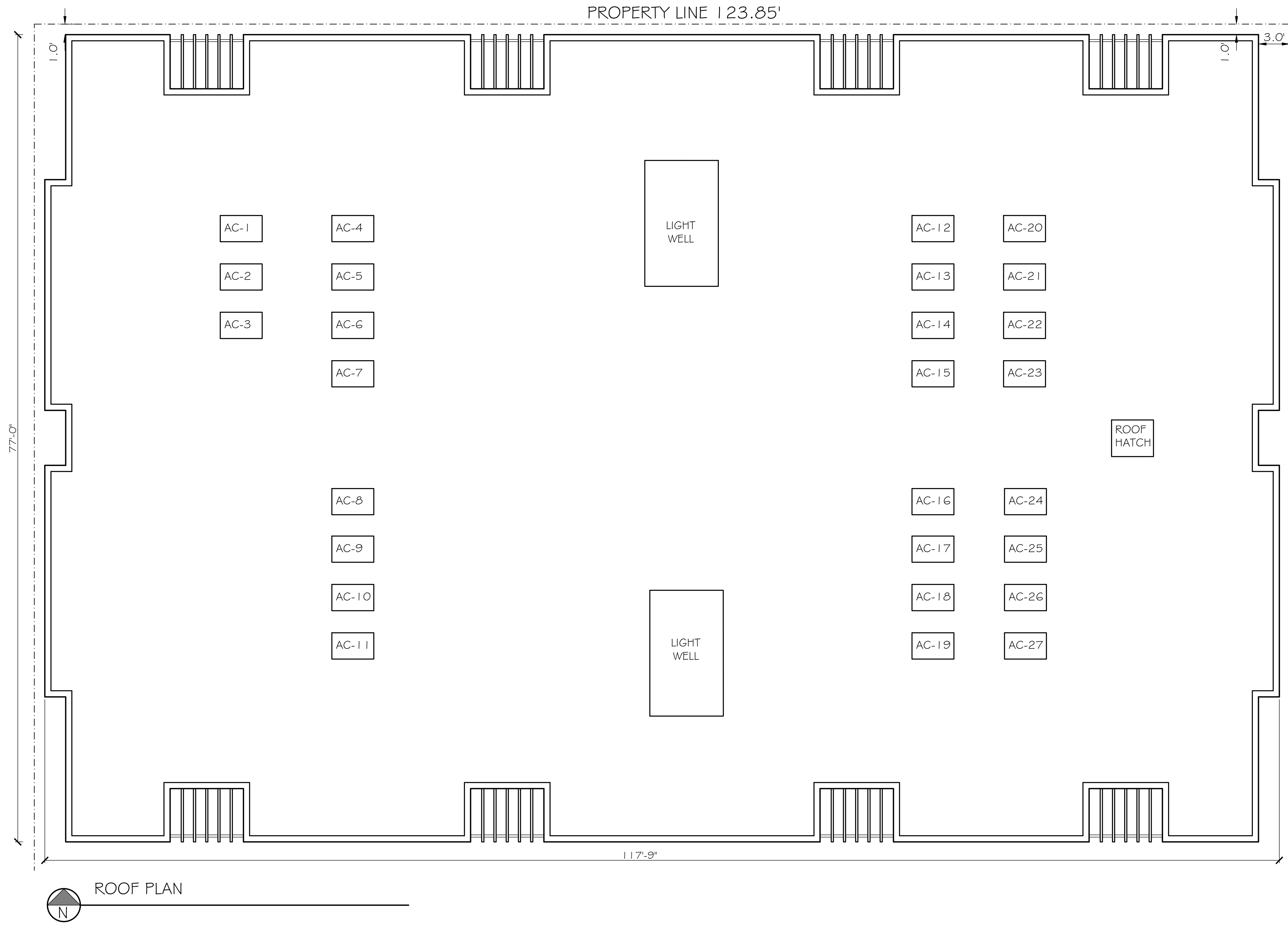
REVISION

SCALE:
 1/8" = 1'-0"

4.2

SITE
 PLAN

500-508 S. LYMAN
 OAK PARK, IL



ROOF PLAN

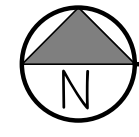
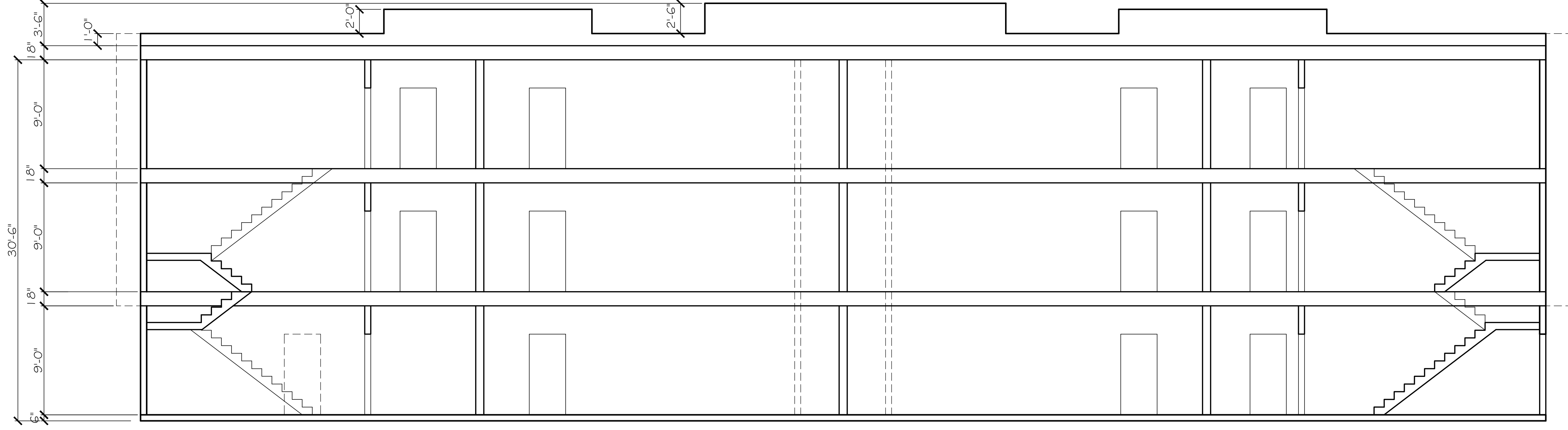
REVISION

SCALE:
3/16" = 1'-0"

4.2

ROOF PLAN

500-508 S. LYMAN
OAK PARK, IL



BUILDING SECTION
(NORTH - SOUTH)

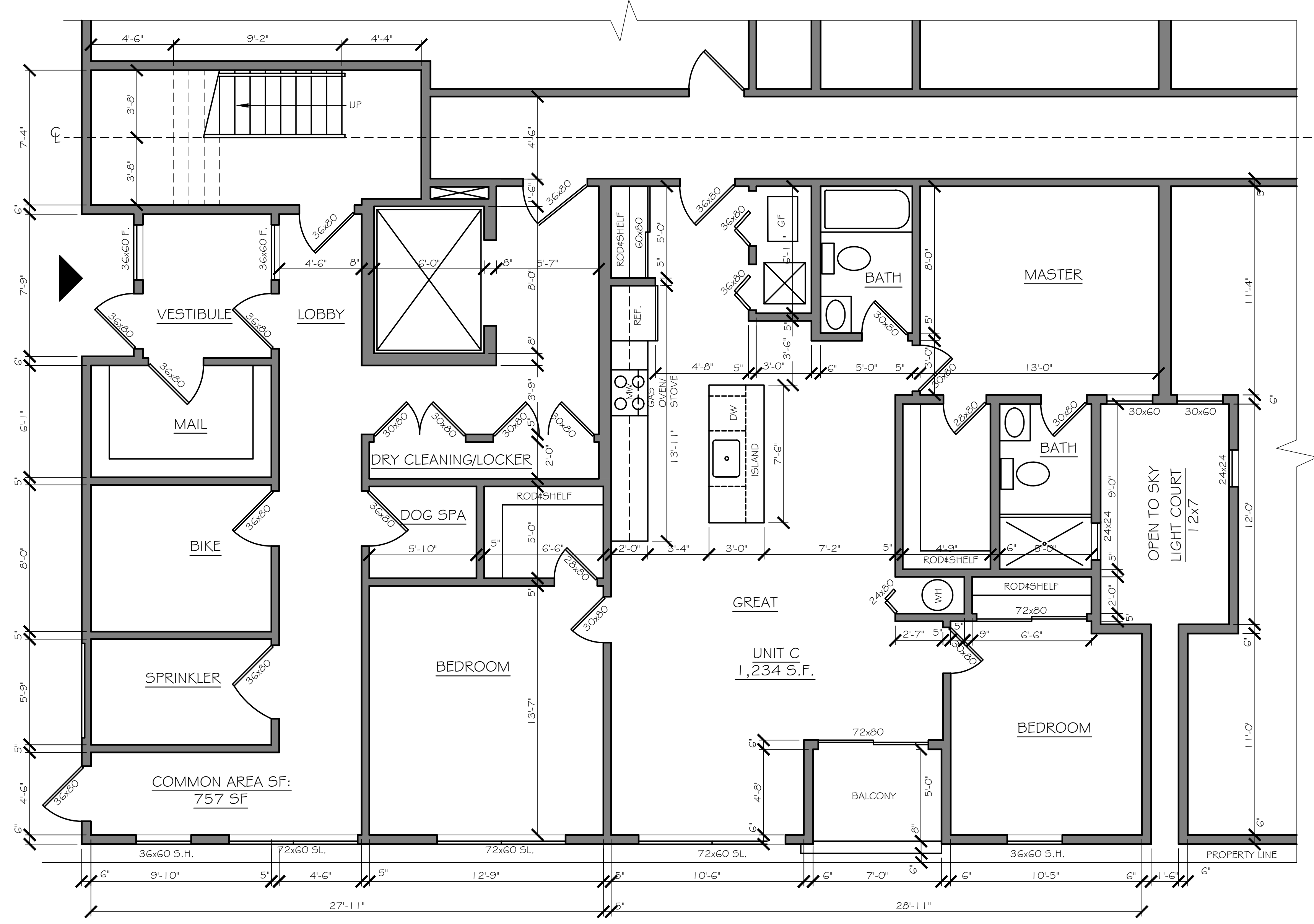
500-508 S. LYMAN
OAK PARK, IL

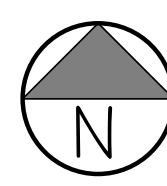
BLDNG SECTION

SCALE:
3/16" = 1'-0"

REVISION

4.2

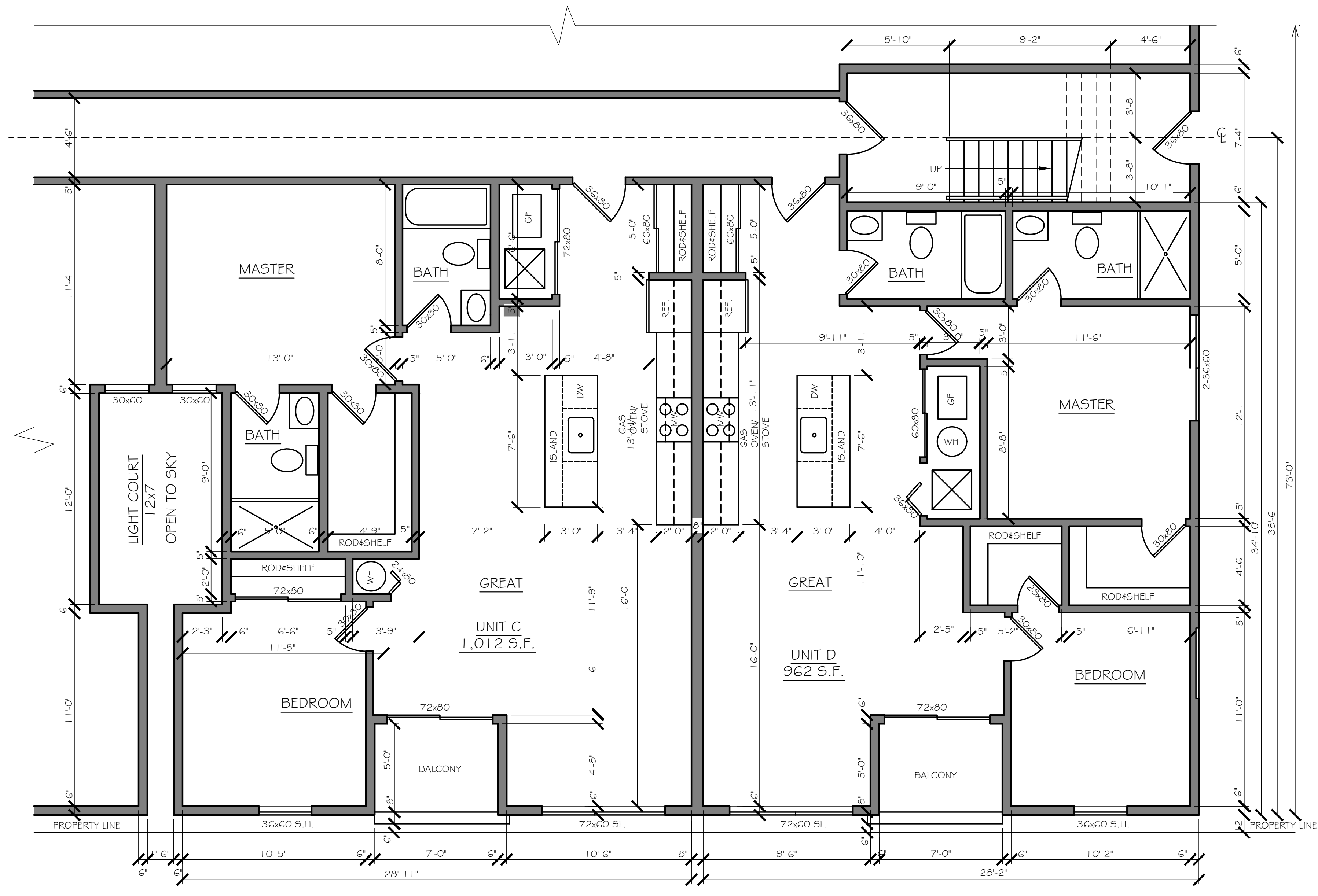


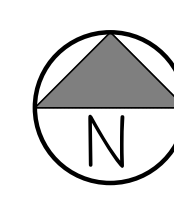

 LOBBY/ENTRY & UNIT B- 1ST FLOOR
 (SOUTH/WEST SIDE OF BUILDING)

FIRST FLOOR
 FLOOR PLAN

500-508 S. LYMAN
 OAK PARK, IL

| | |
|----------|------------------------|
| REVISION | SCALE: 1/4" = 1'-0" |
| | 4.2 |




 UNIT C & D- 1ST FLOOR
 (SOUTH SIDE OF BUILDING)

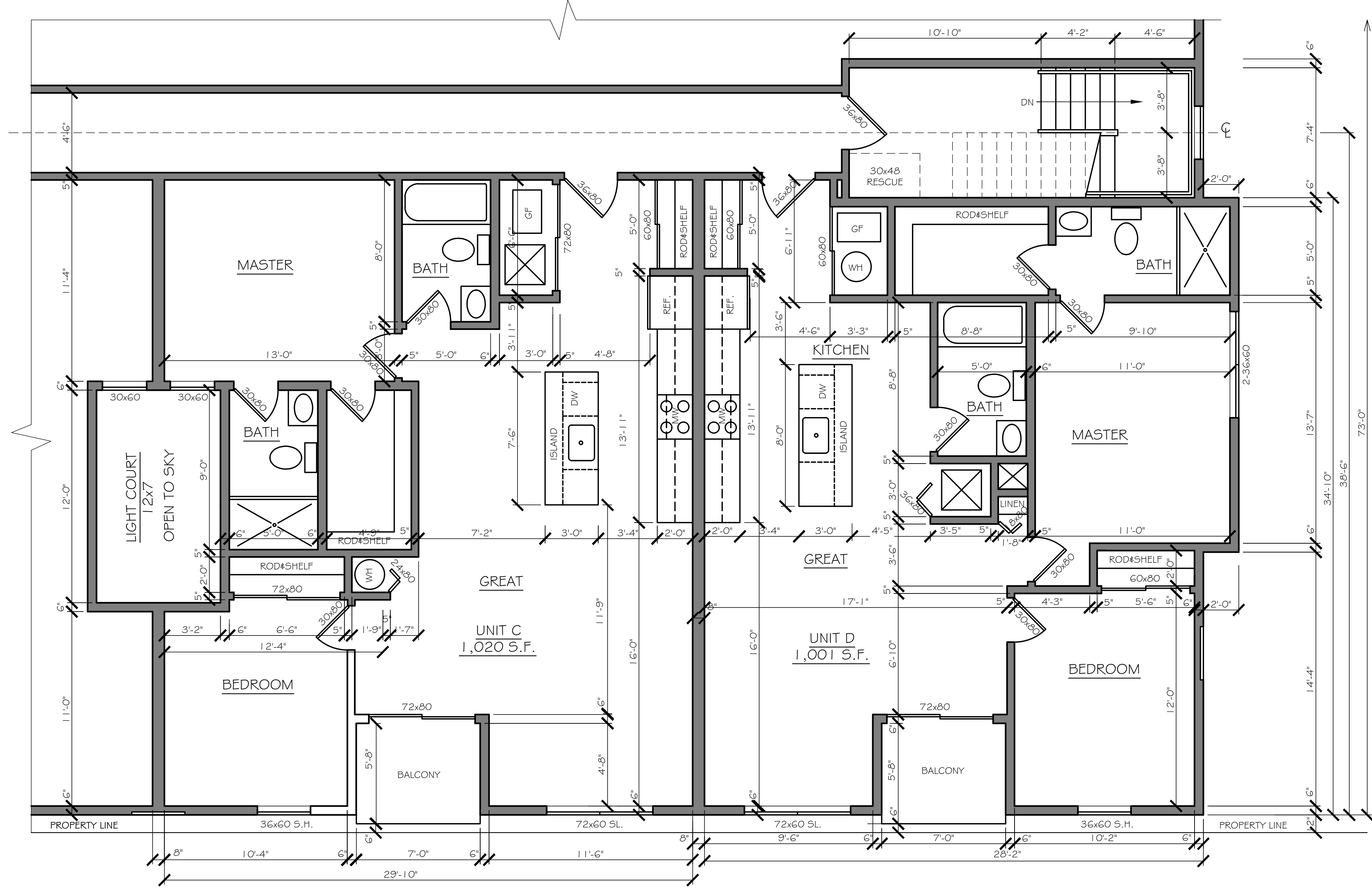
REVISION

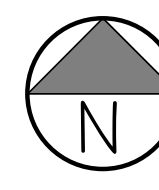
SCALE:
1/4" = 1'-0"

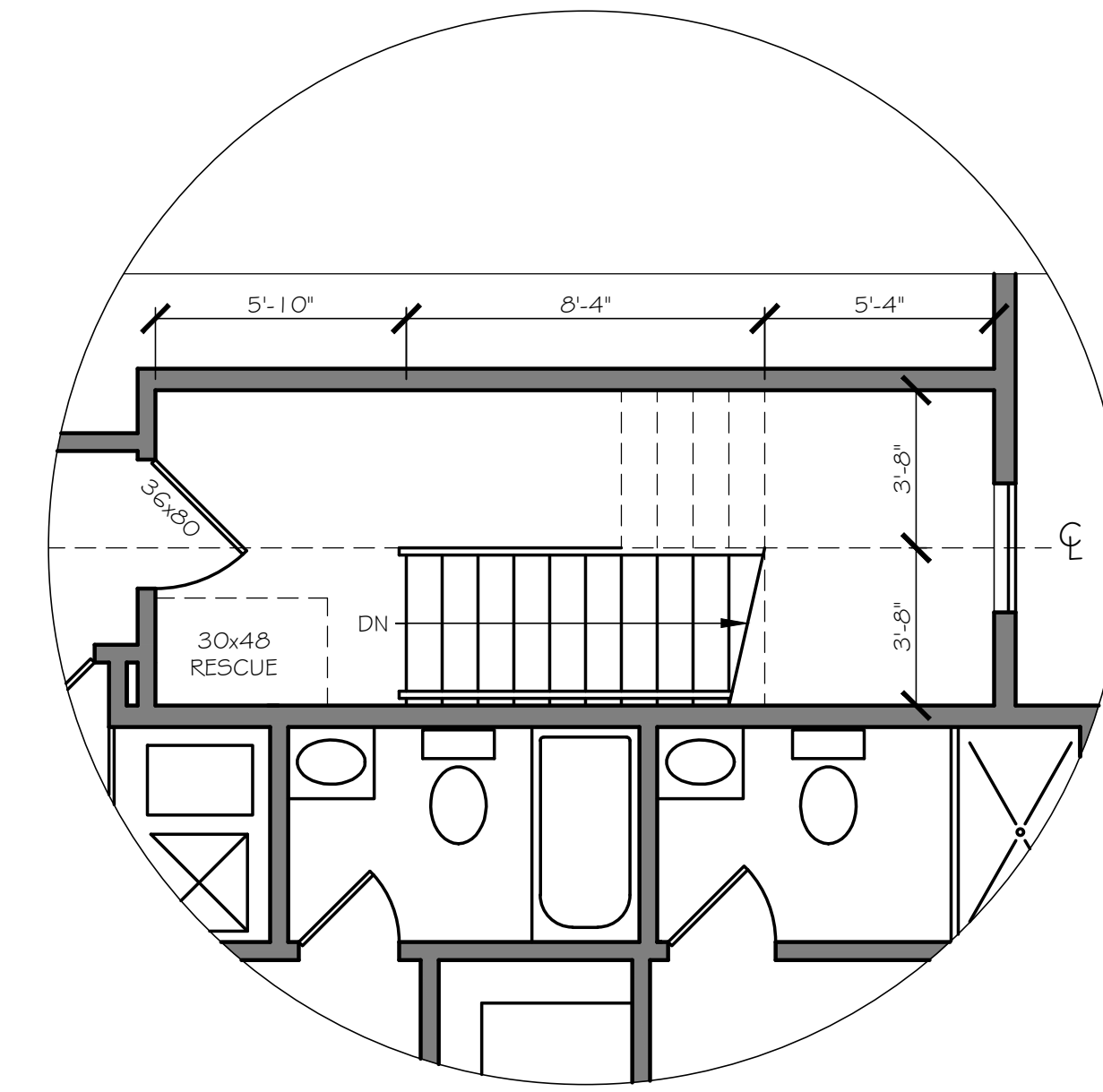
FIRST FLOOR
FLOOR PLAN

500-508 S. LYMAN
OAK PARK, IL

4.2




UNIT C & D- 2ND & 3RD FLOOR
 (SOUTH SIDE OF BUILDING)




3RD FLOOR STAIRS
 (EAST SIDE OF BUILDING)

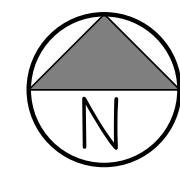
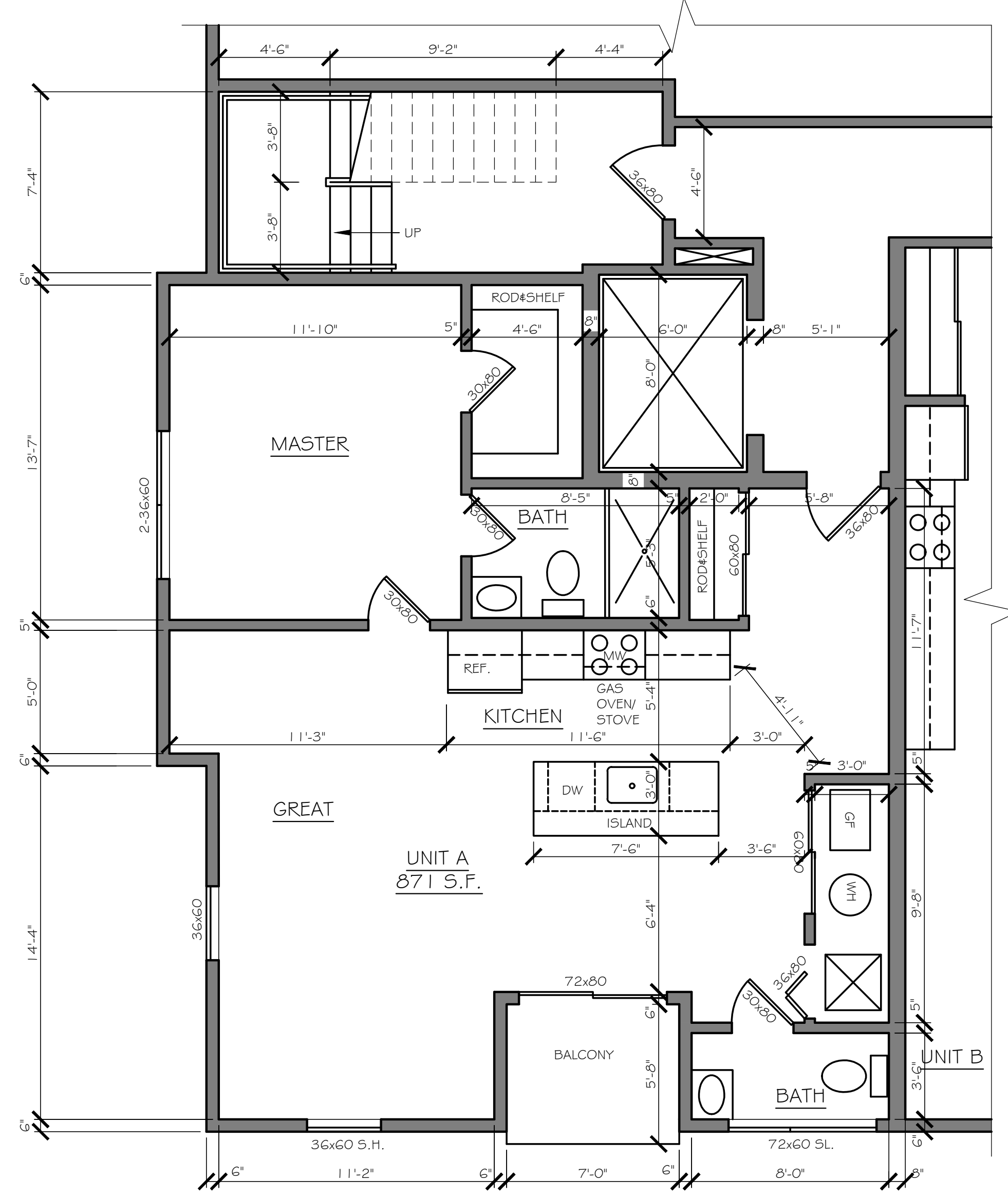
REVISION

SCALE:
1/4" = 1'-0"

4.2

SECOND & THIRD
FLOOR PLAN

500-508 S. LYMAN
OAK PARK, IL



UNIT A (ABOVE LOBBY)- 2ND & 3RD FLOOR
(SOUTH/WEST SIDE OF BUILDING)

REVISION

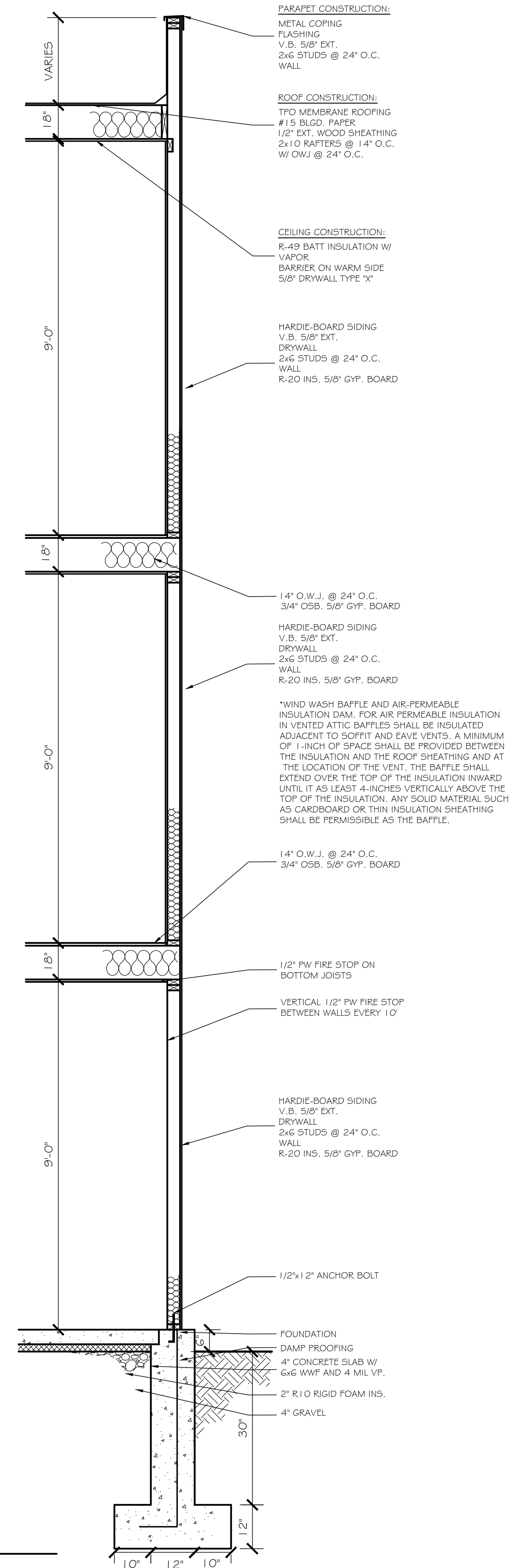
SCALE:
1/4" = 1'-0"

4.2

SECOND & THIRD
FLOOR PLAN

500-508 S. LYMAN
OAK PARK, IL

TYPICAL WALL



REVISION

SCALE:
 1/2" = 1'-0"

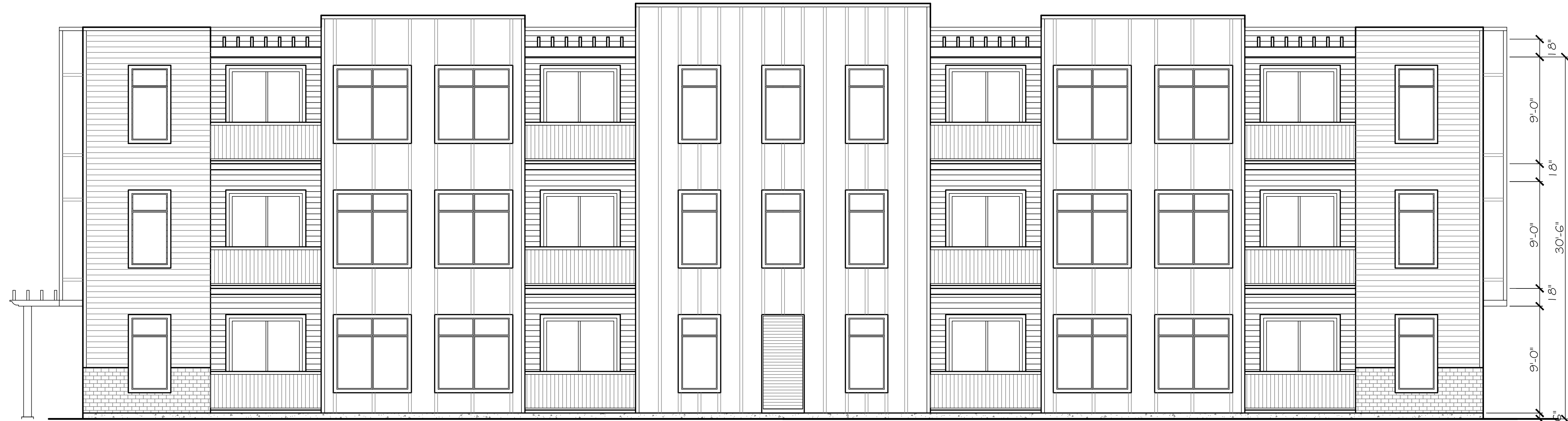
WALL SECTIONS

500-508 S. LYMAN
 OAK PARK, IL

4.2



NORTH ELEVATION (MADISON)



SOUTH ELEVATION (PARKING LOT)

ELEVATIONS

REVISION

SCALE:
3/16" = 1'-0"

4.2

500-508 S. LYMAN
OAK PARK, IL



WEST ELEVATION (LYMAN)



EAST ELEVATION

ELEVATIONS

500-508 S. LYMAN
OAK PARK, IL

SCALE:
3/16" = 1'-0"

REVISION
4.2



RENDERED VIEW FROM MADISON



RENDERED VIEW FROM LYMAN

REVISION

SCALE:
N.T.S.

4.2

RENDERINGS

500-508 S. LYMAN
OAK PARK, IL