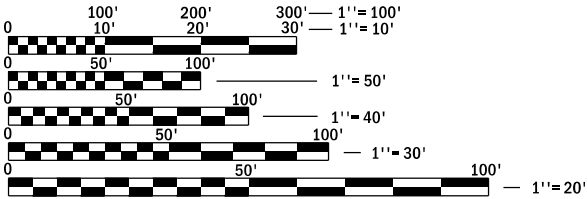
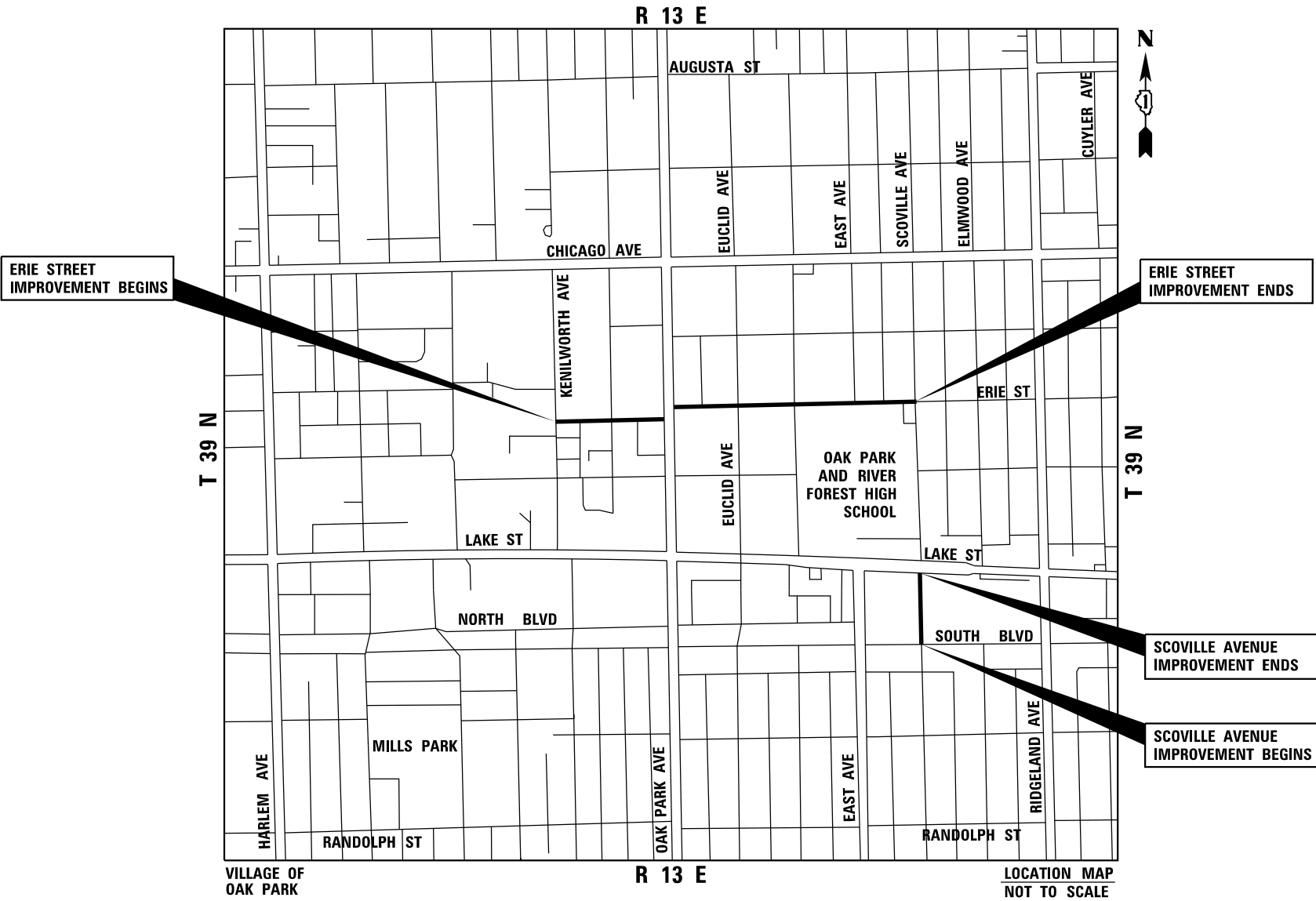
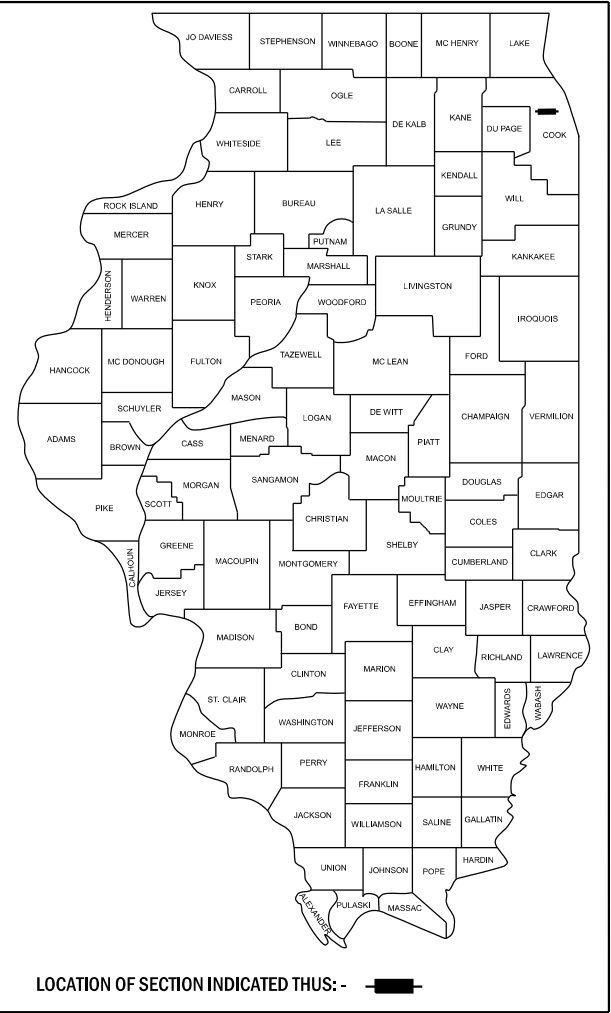


VILLAGE OF OAK PARK, ILLINOIS

VILLAGE PROJECT #23-15 BIKE BOULEVARD PAVEMENT MARKING AND SIGNAGE IMPROVEMENTS ERIE STREET FROM KENILWORTH AVENUE TO SCOVILLE AVENUE SCOVILLE AVENUE FROM LAKE STREET TO SOUTH BOULEVARD

INDEX OF SHEETS

1	COVER SHEET
2	GENERAL NOTES AND SUMMARY OF QUANTITIES
3 - 6	PROPOSED IMPROVEMENT PLAN
7 - 9	CONSTRUCTION DETAILS



FULL SIZE PLANS HAVE BEEN PREPARED USING STANDARD ENGINEERING SCALES. REDUCED SIZED PLANS WILL NOT CONFORM TO STANDARD SCALES. IN MAKING MEASUREMENTS ON REDUCED PLANS, THE ABOVE SCALES MAY BE USED.

J.U.L.I.E.
JOINT UTILITY LOCATION INFORMATION FOR EXCAVATION
1-800-892-0123
OR 811



CONTACT INFORMATION

J.U.L.I.E. 800-892-0123
Public Works Center 708-358-5700
Communication 708-358-5770
Police 708-386-3800
Fire 708-358-5600
EMERGENCY 911

V3 COMPANIES
JASON D. HOLY
062-059941
DATE: 08-31-2023

EXPIRATION DATE: 11-30-2023

GENERAL NOTES

1. BEFORE STARTING ANY EXCAVATION, THE CONTRACTOR SHALL CALL "JULIE", COOK COUNTY AND THE VILLAGE OF OAK PARK FOR FIELD LOCATIONS OF BURIED UTILITIES 48 HOURS IN ADVANCE OF WORK.
2. PRIOR TO NEW WORK, IT SHALL BE THE CONTRACTOR'S RESPONSIBILITY TO FIELD CHECK ALL DIMENSIONS AND ELEVATIONS AND TO VERIFY THE LOCATION AND ELEVATION OF EXISTING UTILITY LINES AND STRUCTURES THAT MAY BE IMPACTED BY THE PROPOSED WORK PRIOR TO ORDERING MATERIAL OR BEGINNING CONSTRUCTION. ANY DISCREPANCIES FROM THE PLANS SHALL BE REPORTED TO THE ENGINEER IMMEDIATELY.
3. ANY DAMAGE TO EXISTING UTILITIES SHALL BE REPAIRED BY THE UTILITY COMPANY AT THE CONTRACTOR'S EXPENSE.
4. ALL APPLICABLE PROVISIONS OF THE CURRENT OCCUPATIONAL SAFETY AND HEALTH ACT ARE HEREIN INCORPORATED BY REFERENCE.
5. EXCEPT WHERE MODIFIED BY THE CONTRACT DOCUMENTS, ALL WORK PROPOSED HEREON SHALL BE IN ACCORDANCE WITH THE FOLLOWING SPECIFICATIONS WHICH ARE HEREBY MADE A PART HEREOF:

a. "STANDARD SPECIFICATIONS FOR ROAD AND BRIDGE CONSTRUCTION IN ILLINOIS," AS PREPARED BY IDOT, LATEST EDITION.

b. "STANDARD SPECIFICATIONS FOR WATER AND SEWER MAIN CONSTRUCTION IN ILLINOIS AS PUBLISHED BY THE IEPA," LATEST EDITION.

c. ILLINOIS RECOMMENDED STANDARDS FOR SEWAGE WORKS," AS PUBLISHED BY THE IEPA. LATEST EDITION.
6. THE ENGINEER AND OWNER ARE NOT RESPONSIBLE FOR THE CONSTRUCTION MEANS, METHODS, TECHNIQUES, SEQUENCES OR PROCEDURES, TIME OF PERFORMANCE, PROGRAMS OR FOR ANY SAFETY PRECAUTIONS USED BY THE CONTRACTOR. THE CONTRACTOR IS SOLELY RESPONSIBLE FOR EXECUTION OF HIS/HER WORK IN ACCORDANCE WITH THE CONTRACT DOCUMENTS AND SPECIFICATIONS.
7. THE CONTRACTOR IS RESPONSIBLE FOR HAVING A SET OF "APPROVED" ENGINEERING PLANS WITH THE LATEST REVISION DATE ON THE JOB SITE PRIOR TO THE START OF CONSTRUCTION AND AT ALL TIMES DURING CONSTRUCTION.
8. CONTRACTOR SHALL MAINTAIN ACCESS TO ALL PROPERTIES AND SIDE ROADS TO REMAIN DURING CONSTRUCTION OPERATIONS.
9. CONTRACTOR TO PROVIDE SHOP DRAWING OF PROPOSED SIGNS FOR APPROVAL BY VILLAGE BEFORE FABRICATING.
10. CONTRACTOR TO COORDINATE WITH OAK PARK AND RIVER FOREST HIGH SCHOOL BEFORE INSTALLING EQUIPMENT ON ERIE STREET TO NOT AFFECT SCHOOL OPERATIONS.
11. TRAFFIC CONTROL AND PROTECTION IS INCLUDED IN THE CONTRACT PRICE. WORK TO BE PERFORMED ON LAKE STREET SHALL USE STANDARD 701502-09.
12. THE REMOVAL OF ANY EXISTING TELESCOPING STEEL SIGN SUPPORTS DUE TO THE RELOCATION OF SIGN PANELS IS TO BE INCLUDED IN THE COST OF THE SIGN PANEL RELOCATION.
13. WORK ON ERIE STREET FROM LINDEN AVENUE TO SCOVILLE AVENUE AND ON LAKE STREET INTERSECTION SHALL BE DONE BETWEEN 9AM - 2PM.
14. ALL PAVEMENT MARKING INSTALLED ON THIS PROJECT SHALL COMPLY WITH IDOT ARTICLE 780 FOR WINTER PERFORMANCE PERIOD AND SPRING INSTALLATION REGARDLESS OF WHEN THE PAVEMENT MARKING IS INSTALLED.

SPECIAL PROVISION	PAY ITEM NO.	ITEM	UNIT	TOTAL QUANTITY
	72000100	SIGN PANEL - TYPE 1	SQ FT	145
	72400710	RELOCATE SIGN PANEL - TYPE 1	SQ FT	9
	78000200	THERMOPLASTIC PAVEMENT MARKING - LINE 4"	FOOT	936
	78000500	THERMOPLASTIC PAVEMENT MARKING - LINE 8"	FOOT	37
	78003101	PREFORMED PLASTIC PAVEMENT MARKING, TYPE B - STANDARD - LETTERS AND SYMBOLS	SQ FT	1,670
*	X1400032	RADAR VEHICLE SENSING DEVICE	EACH	2
*	X2600007	REMOVE AND SALVAGE SIGN PANEL	EACH	3
*	X6350108	FLEXIBLE DELINEATORS	EACH	37
*	X7800010	METHYL METHACRYLATE PAVEMENT COLORIZATION	SQ YD	79
*		CUSTOM 24 INCH X 36 INCH SIGN PANEL	EACH	6
*		TELESCOPING STEEL SIGN SUPPORT (SPECIAL)	FOOT	569

MODEL: Default
FILE NAME: E:\2023\230326\Drawings\Main\CADD_Sheets\230326-shs-gmmoses01.dgn



V3 Companies
7325 Janes Avenue
Woodridge, IL 60517
630.724.9200 phone
630.724.9202 fax
www.v3co.com

USER NAME = mfortmann
PLOT SCALE =
PLOT DATE = 9/26/2023

DESIGNED -
DRAWN -
CHECKED -
DATE -

REVISED -
REVISED -
REVISED -
REVISED -

REVISED -
REVISED -
REVISED -
REVISED -

OAK PARK BIKE BOULEVARD PROGRAM

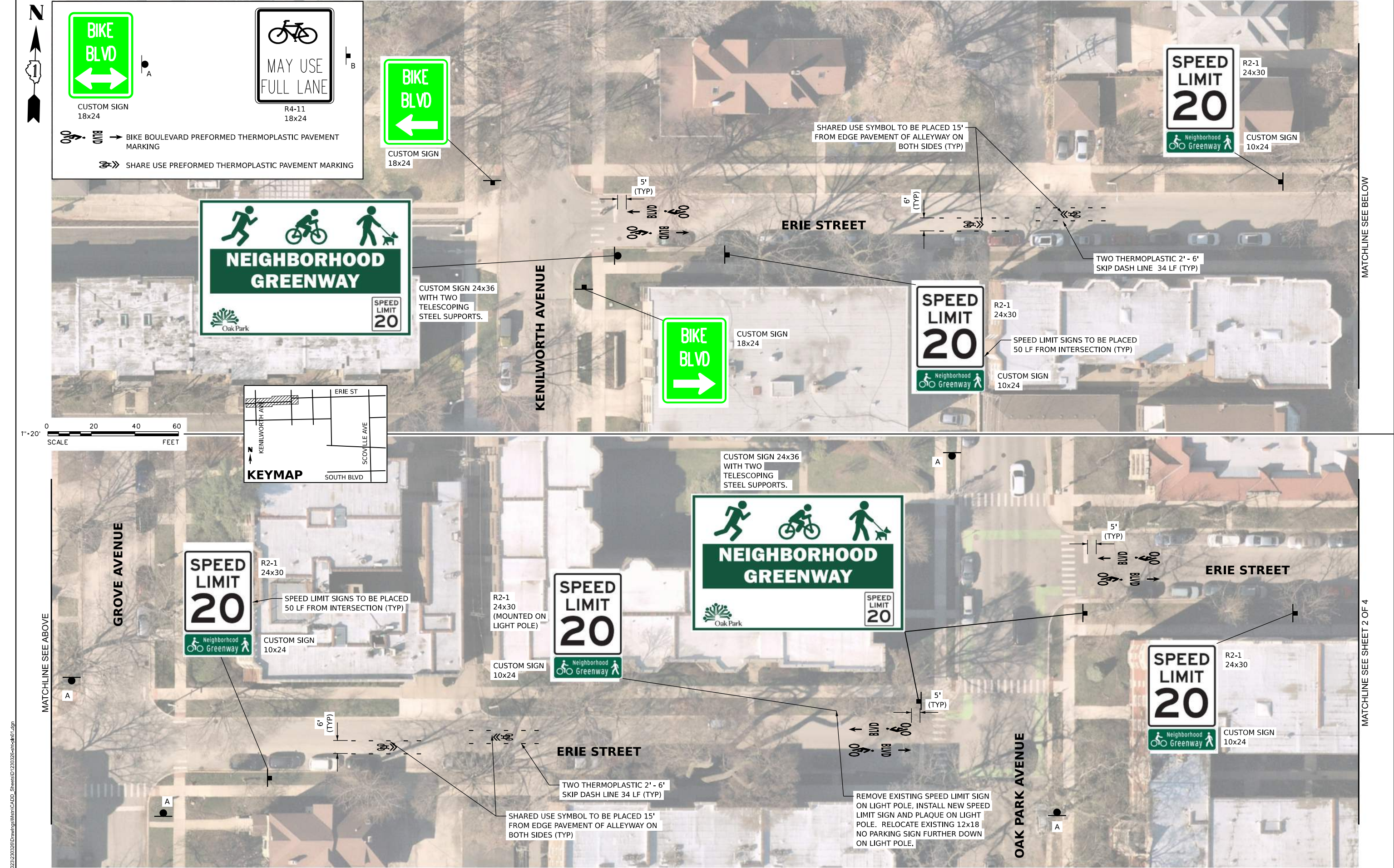
OAK PARK

ILLINOIS

GENERAL NOTES AND SUMMARY OF QUANTITIES

SCALE: NONE SHEET 1 OF 1 SHEETS STA. TO STA.

COUNTY	TOTAL SHEETS	SHEET NO.
COOK	9	2
PROJECT NO. 230326		



MODEL: Default
FILE NAME: E:\2023\230326\Drawings\Main\CAOD_Sheets\230326-sh1-4001.dgn



V3 Companies
7325 Janes Avenue
Woodridge, IL 60517
630.724.9200 phone
630.724.9202 fax
www.v3co.com

USER NAME	= mfortmann
PLOT SCALE	=
PLOT DATE	= 9/26/2023

DESIGNED -	
DRAWN -	
CHECKED -	
DATE -	

REVISED -	
REVISED -	
REVISED -	
REVISED -	

REVISED -	
REVISED -	
REVISED -	
REVISED -	

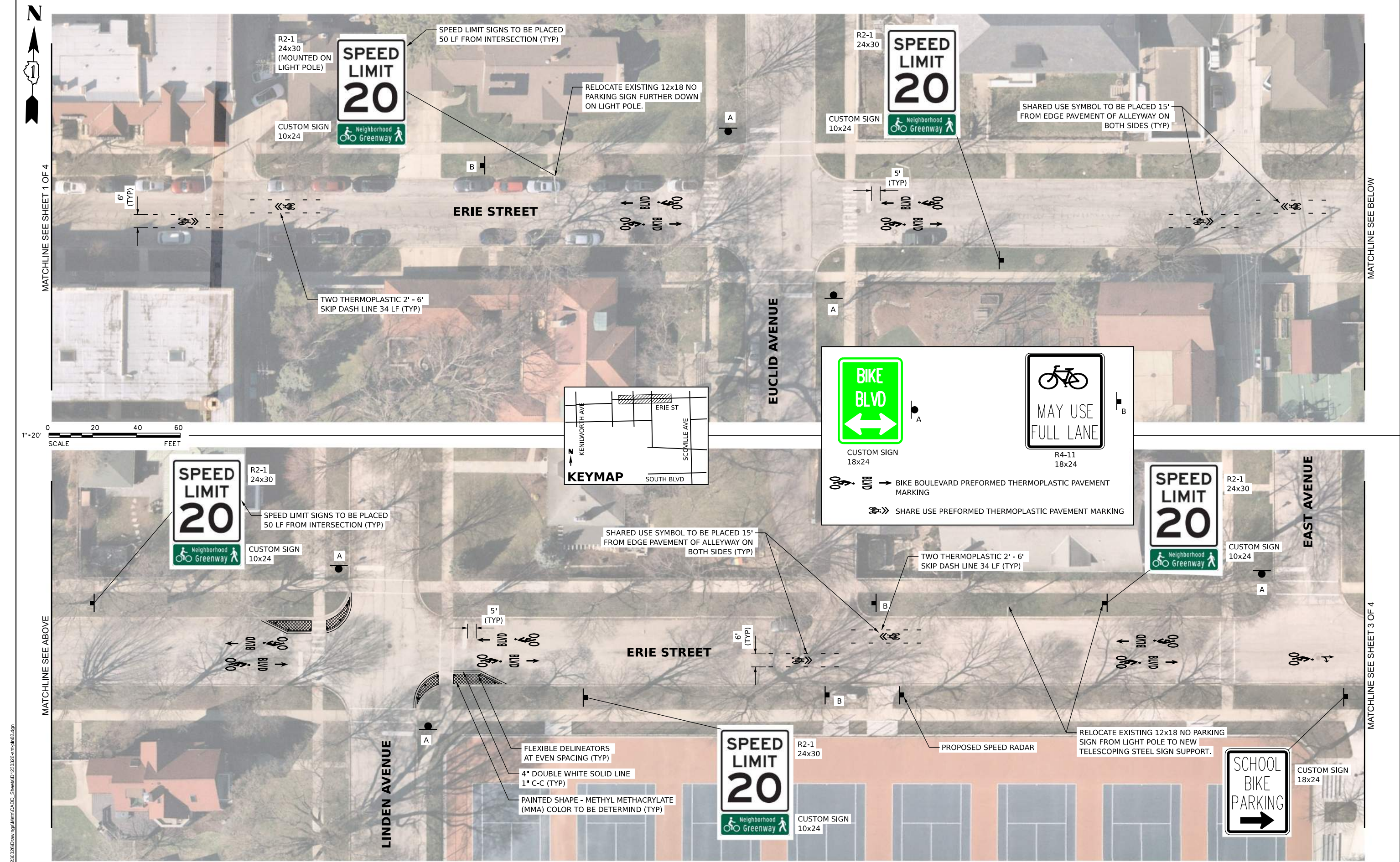
OAK PARK	ILLINOIS
----------	----------

OAK PARK BIKE BOULEVARD PROGRAM

PROPOSED IMPROVEMENT PLANS

SCALE: 1"=20"	SHEET 1 OF 4 SHEETS	STA. TO STA.
---------------	---------------------	--------------

COUNTY	TOTAL SHEETS	SHEET NO.
COOK	9	3
PROJECT NO. 230326		



MODEL: Default
FILE NAME: E:\2023\230326\Drawings\Main\CAAD_Sheets\230326-sh-4-402.dgn



V3 Companies
7325 Janes Avenue
Woodridge, IL 60517
630.724.9200 phone
630.724.9202 fax
www.v3co.com

USER NAME	= mfortmann
PLOT SCALE	=
PLOT DATE	= 9/26/2023

DESIGNED -	
DRAWN -	
CHECKED -	
DATE -	

REVISED -	
REVISED -	
REVISED -	
REVISED -	

REVISED -	
REVISED -	
REVISED -	
REVISED -	

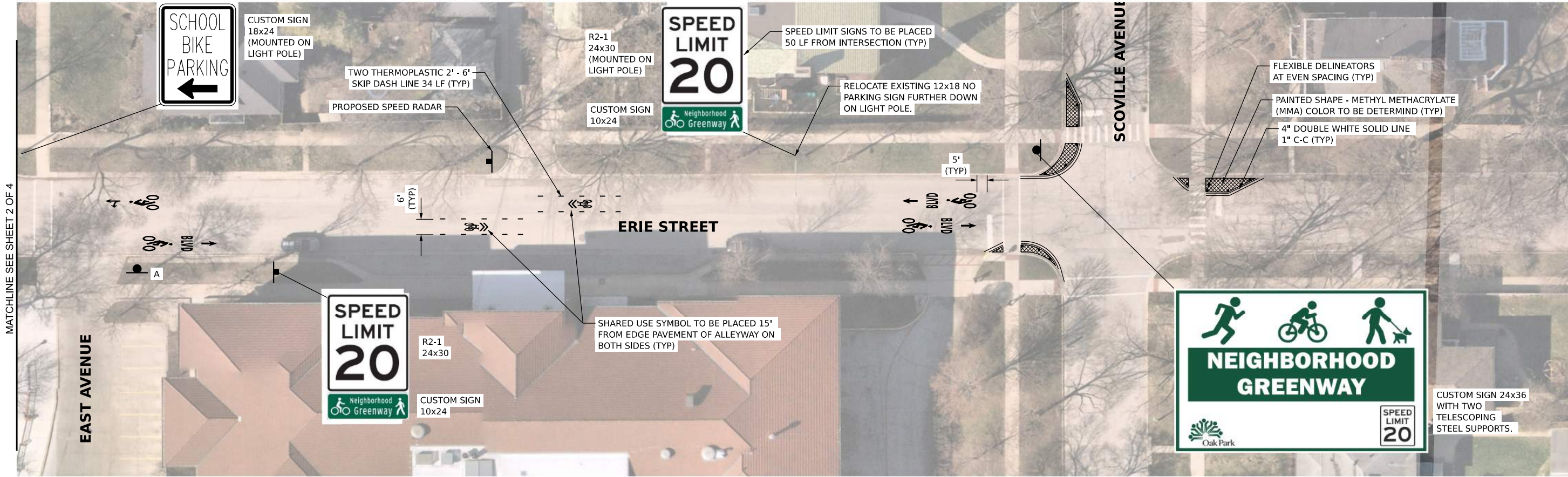
OAK PARK	ILLINOIS
----------	----------

OAK PARK BIKE BOULEVARD PROGRAM

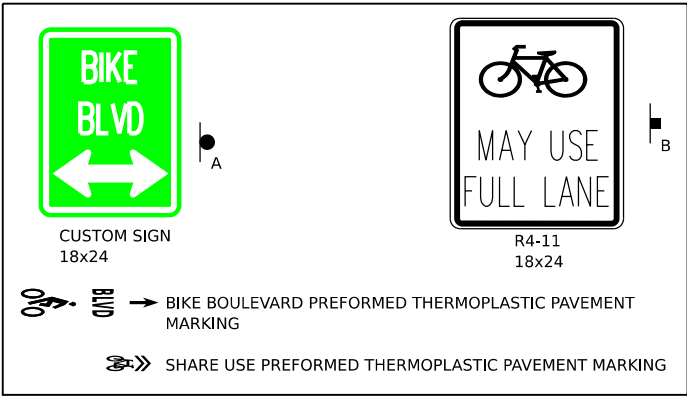
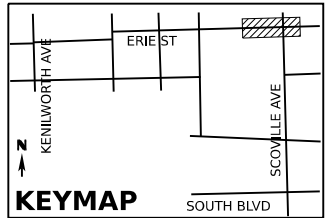
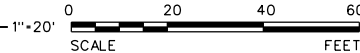
PROPOSED IMPROVEMENT PLANS

SCALE: 1"=20"	SHEET 2 OF 4 SHEETS	STA. TO STA.
---------------	---------------------	--------------

COUNTY	TOTAL SHEETS	SHEET NO.
COOK	9	4
PROJECT NO. 230326		



MATCHLINE SEE SHEET 2 OF 4



MODEL: Default
FILE NAME: E:\2023\230326\Drawings\Main\CADD_Sheets\230326-sh-403.dgn



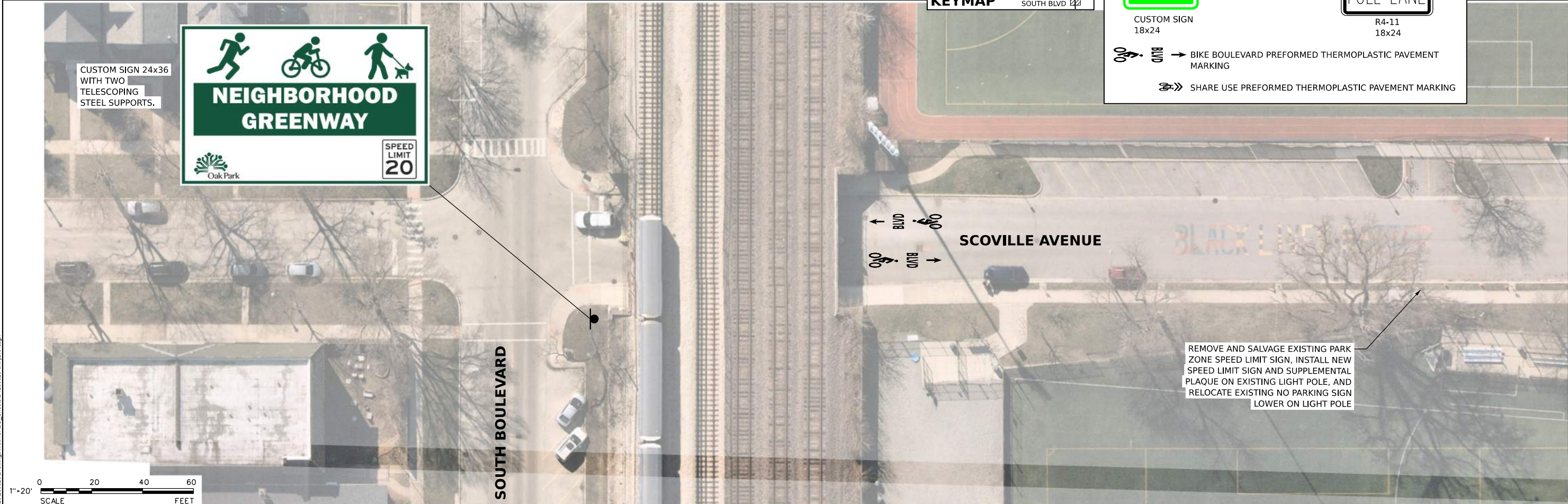
V3 Companies
7325 Janes Avenue
Woodridge, IL 60517
630.724.9200 phone
630.724.9202 fax
www.v3co.com

USER NAME = mfortmann	DESIGNED -	REVISED -	REVISED -
DRAWN -	REVISED -	REVISED -	REVISED -
PLOT SCALE =	CHECKED -	REVISED -	REVISED -
PLOT DATE = 9/26/2023	DATE -	REVISED -	REVISED -

OAK PARK BIKE BOULEVARD PROGRAM

PROPOSED IMPROVEMENT PLANS

OAK PARK	ILLINOIS	SCALE: 1"=20"	SHEET 3 OF 4 SHEETS	STA. TO STA.	COUNTY	TOTAL SHEETS	SHEET NO.
					COOK	9	5
					PROJECT NO. 230326		



MODEL: Default
FILE NAME: E:\2023\230326\Drawings\Main\OAKD_Sheets\230326-sh1-d04.dgn



V3 Companies
7325 Janes Avenue
Woodridge, IL 60517
630.724.9200 phone
630.724.9202 fax
www.v3co.com

USER NAME = mfortmann
DESIGNED -
DRAWN -
PLOT SCALE =
PLOT DATE = 9/26/2023

REVIS
REVIS
REVIS
REVIS

DESIGNED -
DRAWN -
CHECKED -
DATE -

REVIS
REVIS
REVIS
REVIS

DESIGNED -
DRAWN -
CHECKED -
DATE -

REVIS
REVIS
REVIS
REVIS

DESIGNED -
DRAWN -
CHECKED -
DATE -

REVIS
REVIS
REVIS
REVIS

DESIGNED -
DRAWN -
CHECKED -
DATE -

REVIS
REVIS
REVIS
REVIS

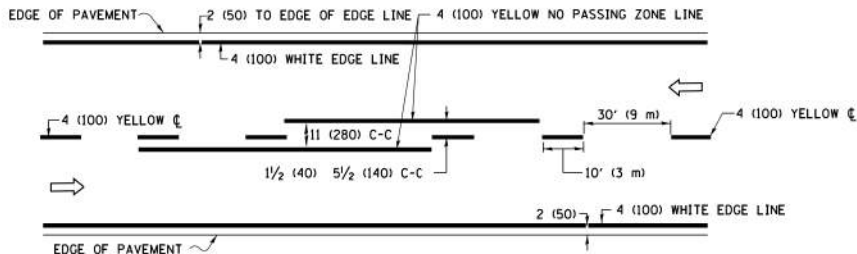
OAK PARK BIKE BOULEVARD PROGRAM
OAK PARK

ILLINOIS

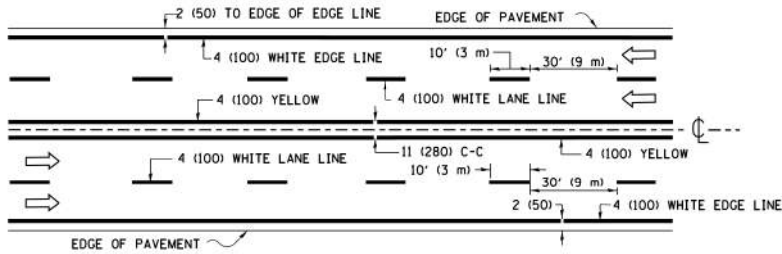
SCALE: 1"=20"

SHEET 4 OF 4 SHEETS
STA. TO STA.

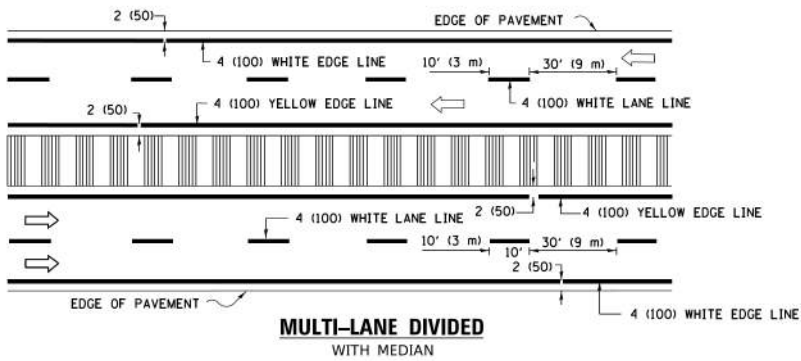
COUNTY TOTAL SHEETS SHEET NO.
COOK 9 6
PROJECT NO. 230326



2-LANE ROADWAY

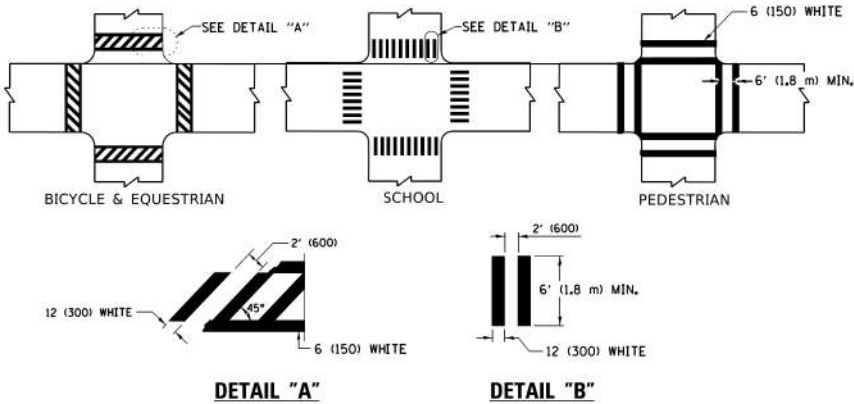


MULTI-LANE UNDIVIDED



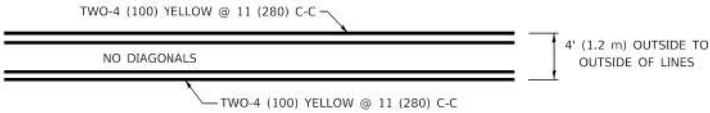
MULTI-LANE DIVIDED
WITH MEDIAN

TYPICAL LANE AND EDGE LINE MARKING

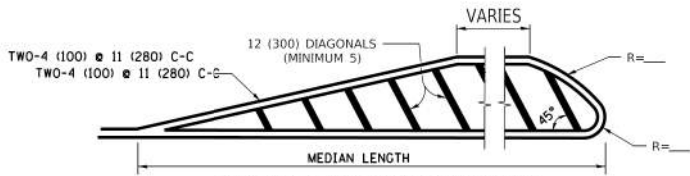


TYPICAL CROSSWALK MARKING

* MARKINGS SHALL BE INSTALLED PARALLEL TO THE CENTERLINE OF THE ROAD WHICH IT CROSSES

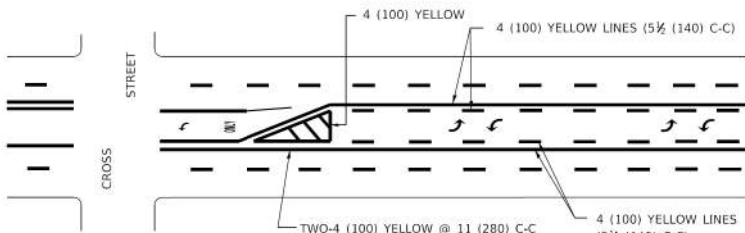


4' (1.2 m) WIDE MEDIANS ONLY

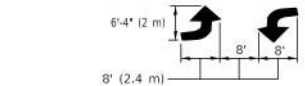


DIAGONAL LINE SPACING: 50' (15 m) C-C (LESS THAN 30MPH (50 km/h))
75' (25 m) C-C 30MPH (50 km/h) TO 45MPH (70 km/h))
150' (45 m) C-C (MORE THAN 45MPH (70 km/h))

MEDIANS OVER 4' (1.2 m) WIDE

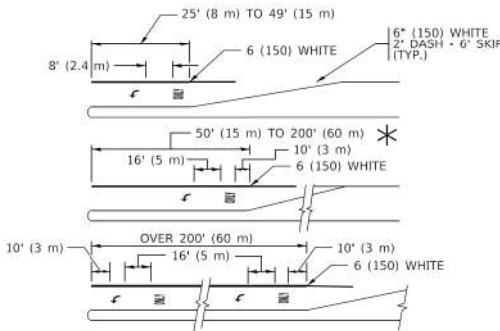


A MINIMUM OF TWO PAIRS OF TURN ARROWS SHALL BE USED, WHITE IN COLOR, ADDITIONAL PAIRS SHALL BE PLACED AT 200' (60 m) TO 300' (90 m) INTERVALS.



MEDIAN WITH TWO-WAY LEFT TURN LANE

TYPICAL PAINTED MEDIAN MARKING

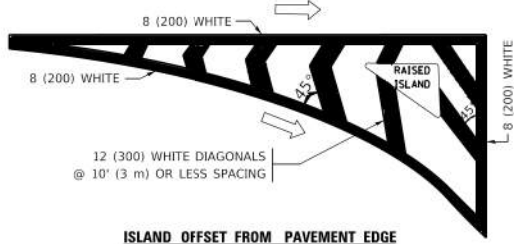


FULL SIZE LETTERS 8' (2.4 m) AND ARROWS SHALL BE USED.
AREA = 15.6 SQ. FT. (1.5 m²) ONLY AREA = 20.8 SQ. FT. (1.9 m²)

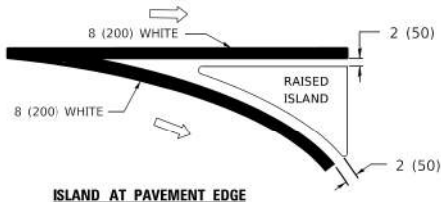
* TURN LANES IN EXCESS OF 400' (120 m) IN LENGTH MAY HAVE AN ADDITIONAL SET OF ARROW - "ONLY" INSTALLED MIDWAY BETWEEN THE OTHER TWO SETS OF ARROW - "ONLY".

TYPICAL LEFT (OR RIGHT) TURN LANE

TYPICAL TURN LANE MARKING

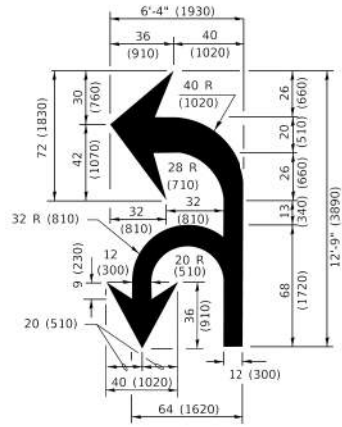


ISLAND OFFSET FROM PAVEMENT EDGE

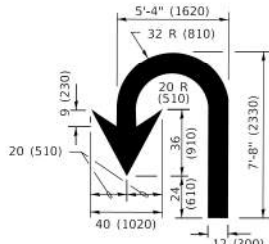


ISLAND AT PAVEMENT EDGE

TYPICAL ISLAND MARKING



COMBINATION
LEFT AND U-TURN



U-TURN

LANE REDUCTION TRANSITION

* LANE REDUCTION ARROWS REQUIRED AT SPEEDS OF 45 MPH OR GREATER OR WHEN SPECIFIED IN PLANS.

TYPE OF MARKING	WIDTH OF LINE	PATTERN	COLOR	SPACING / REMARKS
CENTERLINE ON 2 LANE PAVEMENT	4 (100)	SKIP-DASH	YELLOW	10' (3 m) LINE WITH 30' (9 m) SPACE
CENTERLINE ON MULTI-LANE UNDIVIDED PAVEMENT	2 @ 4 (100)	SOLID	YELLOW	11 (280) C-C
NO PASSING ZONE LINES: FOR ONE DIRECTION FOR BOTH DIRECTIONS	4 (100) 2 @ 4 (100)	SOLID SOLID	YELLOW YELLOW	5 1/2 (140) C-C FROM SKIP-DASH CENTERLINE 11 (280) C-C OMIT SKIP-DASH CENTERLINE BETWEEN
LANE LINES	4 (100) 5 (125) ON FREEWAYS	SKIP-DASH SKIP-DASH	WHITE WHITE	10' (3 m) LINE WITH 30' (9 m) SPACE
DOTTED LINES (EXTENSIONS OF CENTER, LANE OR TURN LANE MARKINGS)	SAME AS LINE BEING EXTENDED	SKIP-DASH	SAME AS LINE BEING EXTENDED	2' (600) LINE WITH 6' (1.8 m) SPACE
EDGE LINES	4 (100)	SOLID	YELLOW-LEFT WHITE-RIGHT	OUTLINE MEDIANS IN YELLOW
TURN LANE MARKINGS	6 (150) LINE; FULL SIZE LETTERS & SYMBOLS (8' (2.4m))	SOLID	WHITE	SEE TYPICAL TURN LANE MARKING DETAIL
TWO WAY LEFT TURN MARKING	2 @ 4 (100) EACH DIRECTION 8' (2.4m) LEFT ARROW	SKIP-DASH AND SOLID IN PAIRS	YELLOW WHITE	10' (3 m) LINE WITH 30' (9 m) SPACE FOR SKIP-DASH; 5 1/2 (140) C-C BETWEEN SOLID LINE AND SKIP-DASH LINE SEE TYPICAL TWO-WAY LEFT TURN MARKING DETAIL
CROSSWALK LINES (PEDESTRIAN) A. DIAGONALS (BIKE & EQUESTRIAN) B. LONGITUDINAL BARS (SCHOOL)	2 @ 6 (150) 12 (300) @ 45° 12 (300) @ 90°	SOLID SOLID SOLID	WHITE WHITE WHITE	NOT LESS THAN 6' (1.8 m) APART 2' (600) APART SEE TYPICAL CROSSWALK MARKING DETAILS.
STOP LINES	24 (600)	SOLID	WHITE	PLACE 4' (1.2 m) IN ADVANCE OF AND PARALLEL TO CROSSWALK, IF PRESENT. OTHERWISE, PLACE AT DESIRED STOPPING POINT. PARALLEL TO CROSSROAD CENTERLINE, WHERE POSSIBLE
PAINTED MEDIANS	2 @ 4 (100) WITH 12 (300) DIAGONALS @ 45° NO DIAGONALS USED FOR 4' (1.2 m) WIDE MEDIANS	SOLID	YELLOW: TWO WAY TRAFFIC WHITE: ONE WAY TRAFFIC	11 (280) C-C FOR THE DOUBLE LINE SEE TYPICAL PAINTED MEDIAN MARKING.
GORE MARKING AND CHANNELIZING LINES	8 (200) WITH 12 (300) DIAGONALS @ 45°	SOLID	WHITE	DIAGONALS: 15' (4.5 m) C-C (LESS THAN 30MPH (50 km/h)) 20' (6 m) C-C 30MPH (50 km/h) TO 45MPH (70 km/h)) 30' (9 m) C-C (OVER 45MPH (70 km/h))
RAILROAD CROSSING	24 (600) TRANSVERSE LINES: "RR" IS 6' (1.8 m) LETTERS; 16 (400) LINE FOR "X"	SOLID	WHITE	SEE STATE STANDARD 780001 AREA OF: "R"=3.6 SQ. FT. (0.33 m ²) EACH "X"=54.0 SQ. FT. (5.0 m ²)
SHOULDER DIAGONALS (REQUIRED FOR SHOULDERS ≥ 8')	12 (300) @ 45°	SOLID	WHITE - RIGHT YELLOW - LEFT	50' (15 m) C-C (LESS THAN 30MPH (50 km/h)) 75' (25 m) C-C (30 MPH (50 km/h) TO 45MPH (70 km/h)) 150' (45 m) C-C (OVER 45MPH (70 km/h))
U TURN ARROW	SEE DETAIL	SOLID	WHITE	16.3 SF
2 ARROW COMBINATION LEFT AND U TURN	SEE DETAIL	SOLID	WHITE	30.4 SF

FOR FURTHER DETAILS ON PAVEMENT MARKING REFER TO STANDARD SPECIFICATIONS FOR ROAD AND BRIDGE CONSTRUCTION AND STATE STANDARD 780001.

All dimensions are in inches (millimeters) unless otherwise shown.

MODEL: Default
FILE NAME: E:\2023\230326\Drawings\Main\OAK_Bike\230326-sh-1-detail01.dgn



V3 Companies
7325 Janes Avenue
Woodridge, IL 60517
630.724.9200 phone
630.724.9202 fax
www.v3co.com

USER NAME = mfortmann
PLOT SCALE =
PLOT DATE = 9/26/2023

DESIGNED -
DRAWN -
CHECKED -
DATE -

REVISED -
REVISED -
REVISED -
REVISED -

REVISED -
REVISED -
REVISED -
REVISED -

OAK PARK BIKE BOULEVARD PROGRAM

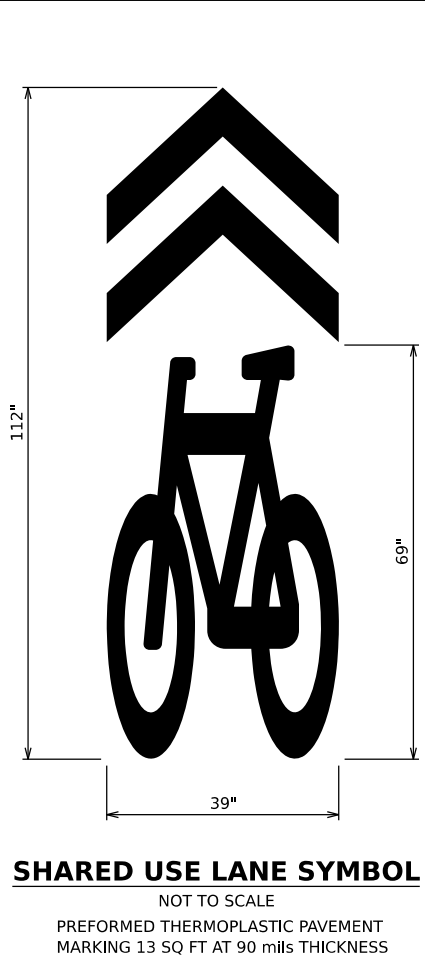
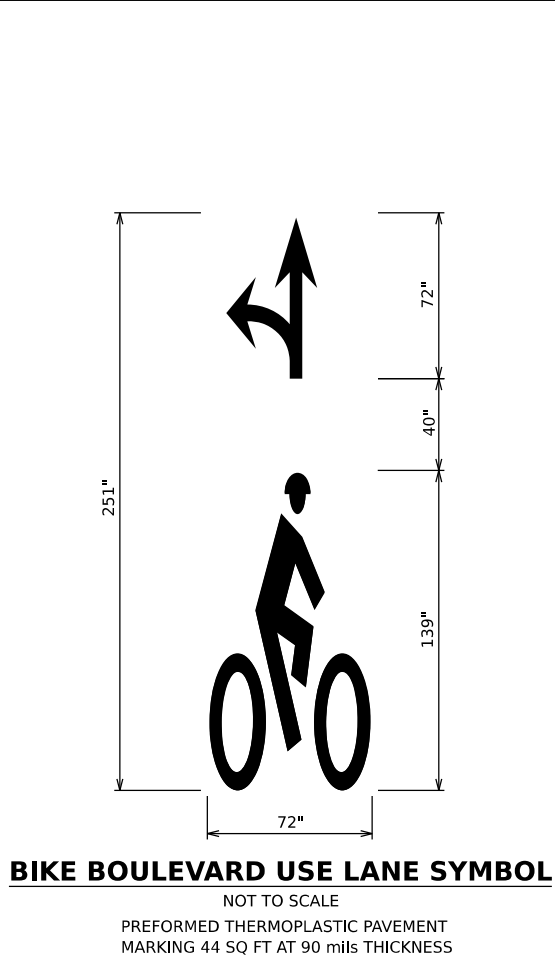
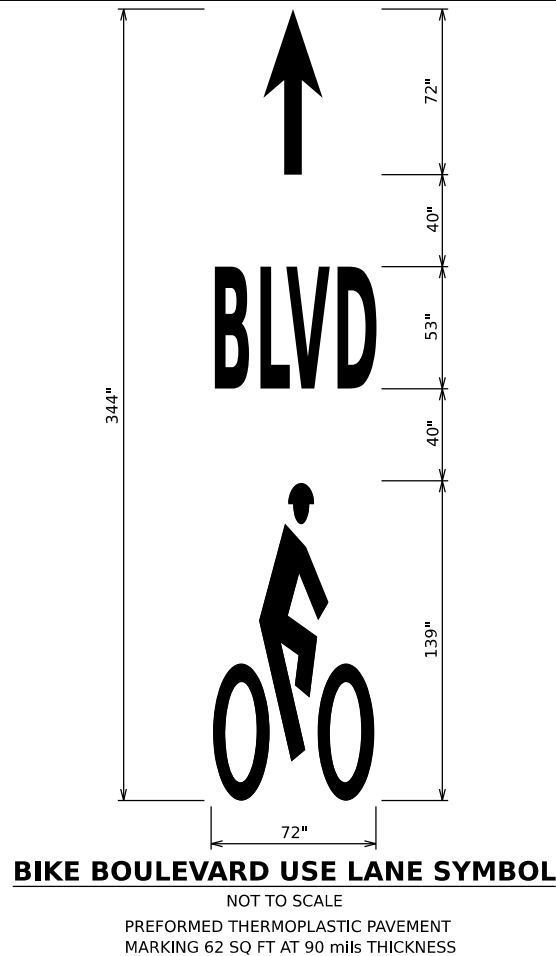
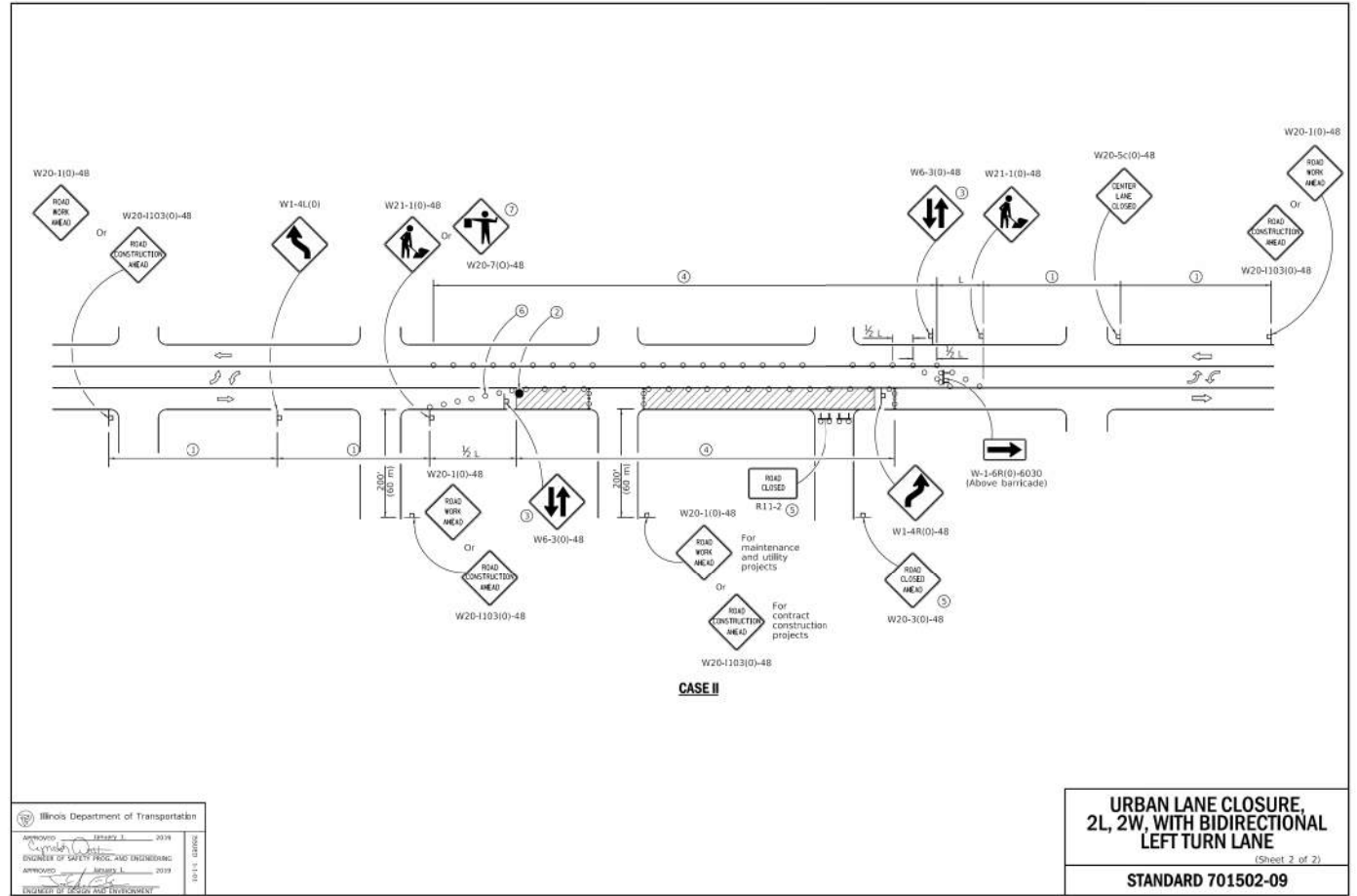
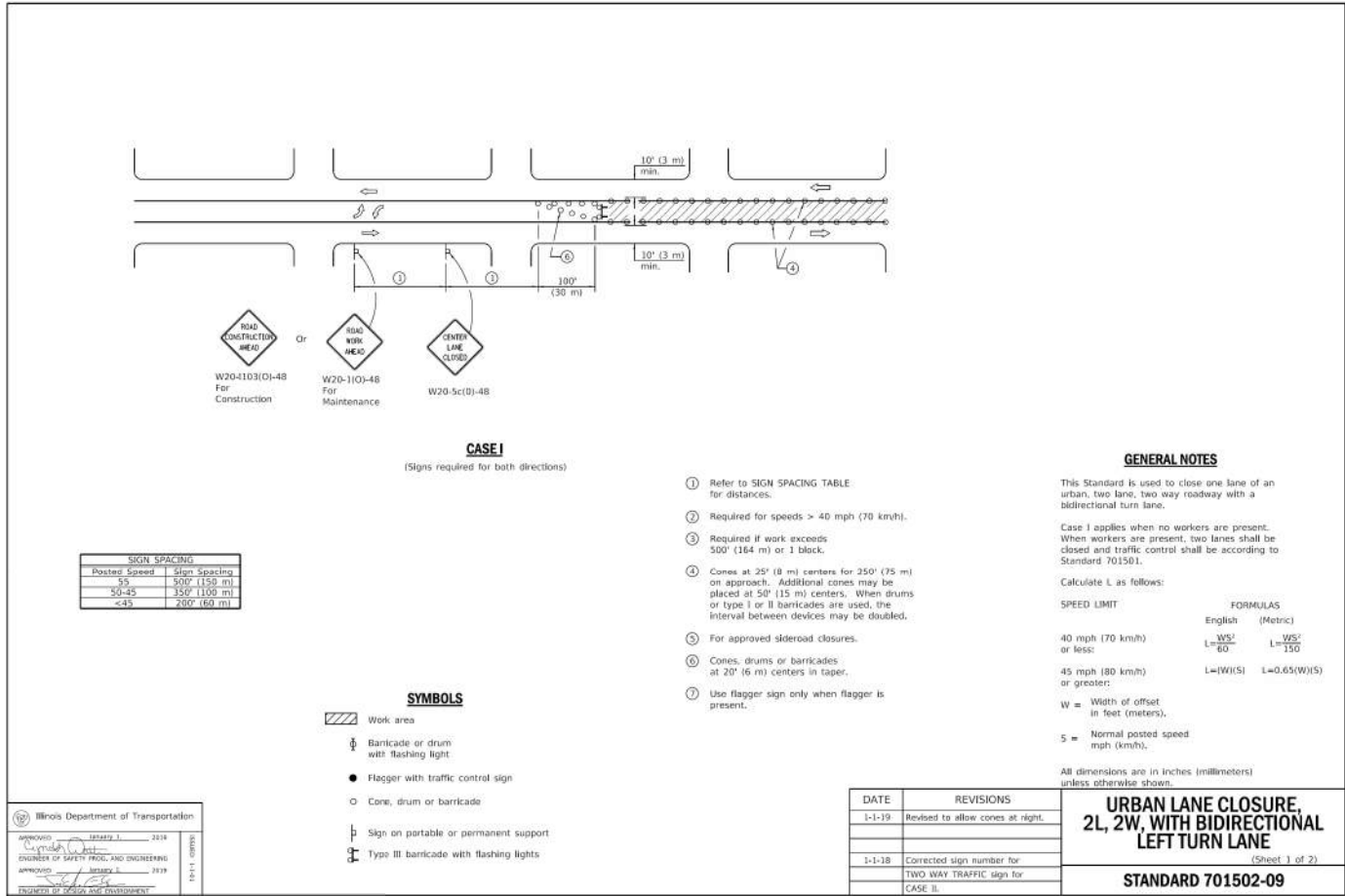
OAK PARK

ILLINOIS

CONSTRUCTION DETAILS

SCALE: NONE SHEET 1 OF 3 SHEETS STA. TO STA.

COUNTY TOTAL SHEETS SHEET NO.
COOK 9 7
PROJECT NO. 230326



MODEL: Default
FILE NAME: E:\2023\230326\Drawings\Main\CADD_Sheets\230326-sh1-detail01.dgn



V3 Companies
7325 Janes Avenue
Woodridge, IL 60517
630.724.9200 phone
630.724.9202 fax
www.v3co.com

USER NAME = mfortmann
PLOT SCALE =
PLOT DATE = 9/26/2023

DESIGNED -
DRAWN -
CHECKED -
DATE -

REVISED -
REVISED -
REVISED -
REVISED -

REVISED -
REVISED -
REVISED -
REVISED -

OAK PARK BIKE BOULEVARD PROGRAM

ILLINOIS

SCALE: NONE

SHEET 3 OF 3 SHEETS STA. TO STA.

CONSTRUCTION DETAILS

COUNTY	TOTAL SHEETS	SHEET NO.
COOK	9	\$DET03

PROJECT NO. 230326