

I-290 Phase I Study

Letter of Intent – Oak Park Village Aesthetic, Sustainability, & Capping Opportunities – Exhibit 2

July 2016

This exhibit represents concepts identified during Phase I and are subject to further analysis and refinement as well as further discussions about funding opportunities, cost participation & maintenance in Phase II

Harlem Ave
LED Lighting

Harlem Avenue
Decorative light poles, railing/fence
painted road/bike/crosswalk surfaces,
gateway feature

Pedestrian Plaza Area
Hardscape opportunity

Pedestrian Plaza Area
Hardscape opportunity

Hardscape/Landscape Opportunity
Landscaping, hardscape,
Solar Garden
South Area: 1,200 SF
North Area: 2,800 SF

Community Level Green Space
Landscaping/native plantings

Expanded Decking Opportunity
Landscaping/hardscape,
Solar Garden
Area: 16,700 SF

Harrison St.
LED Lighting

Shared Use Path
Permeable Pavement

Aesthetic Features
IDOT will continue to work with the Village during Phase II (design) to develop and refine the specific Village features to be implemented. Village cost participation and maintenance responsibility will be required for non-standard items and/or the incremental cost difference over standard items.

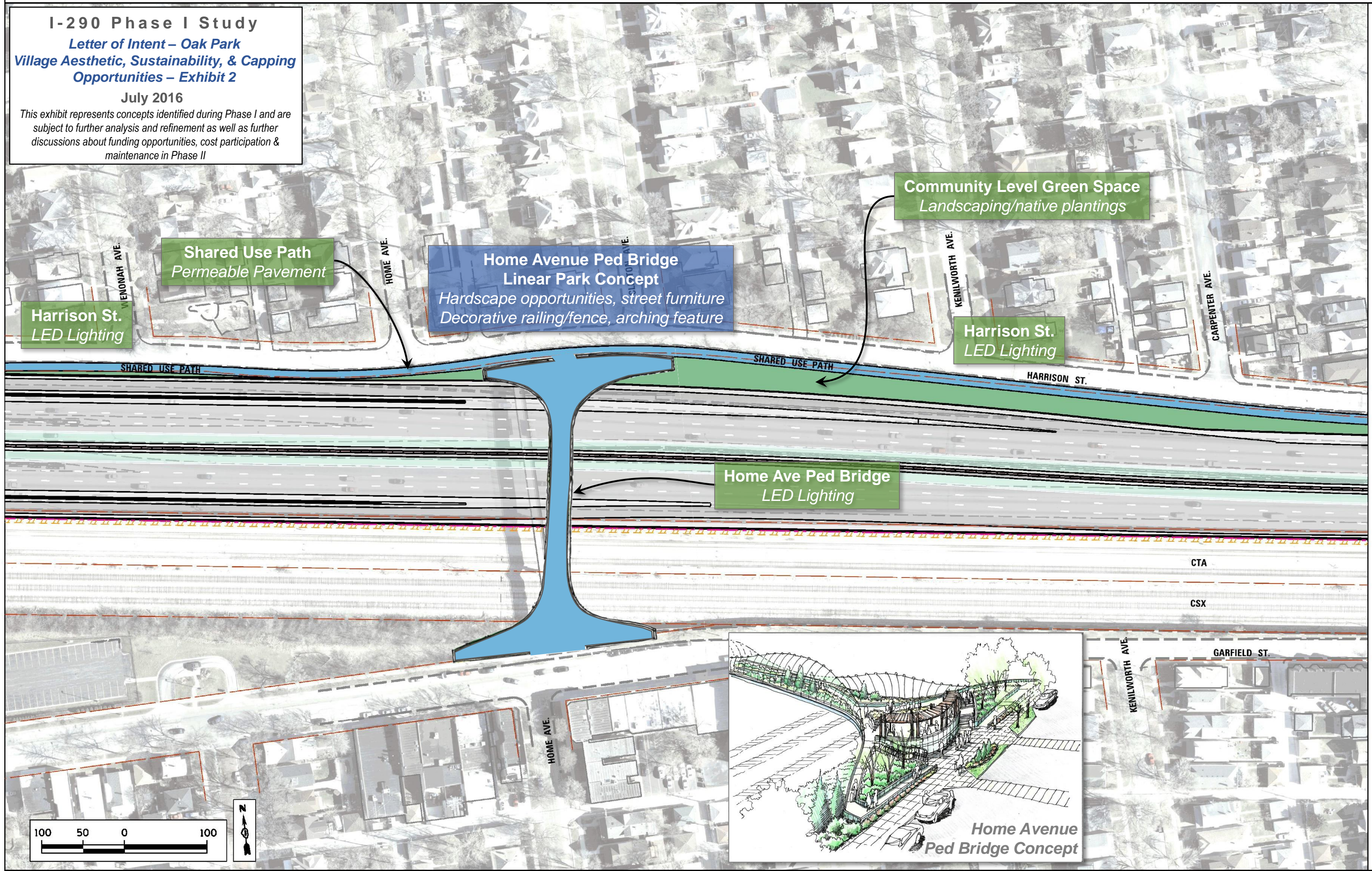
Decking:
For any extended decking that is constructed, the Village maintenance responsibility for the decking would include 100% of the structural support system (deck, beams, piers and abutments) and the deck appurtenances constructed on top of the deck. IDOT will continue discussion with the Village regarding design and funding opportunities for extended decking during Phase II.

Sustainability Features:
IDOT will work with the Village to incorporate sustainable features (i.e. solar power, native plantings, energy efficient lighting, permeable pavements, etc.) where feasible and where opportunities exist within the Village. Non-standard features and/or incremental cost difference over standard features will require Village cost participation and maintenance responsibility.

Legend

- Temporary Easement
- Proposed ROW
- Existing ROW
- Sidewalk/path/plaza
- At-grade local greenspace area
- Open space area, on structure
- Sloped vegetative area
- Roadway pavement, on structure
- Roadway pavement, on fill

I-290 Phase I Study
Letter of Intent – Oak Park
Village Aesthetic, Sustainability, & Capping
Opportunities – Exhibit 2
July 2016
This exhibit represents concepts identified during Phase I and are subject to further analysis and refinement as well as further discussions about funding opportunities, cost participation & maintenance in Phase II



Shared Use Path
Permeable Pavement

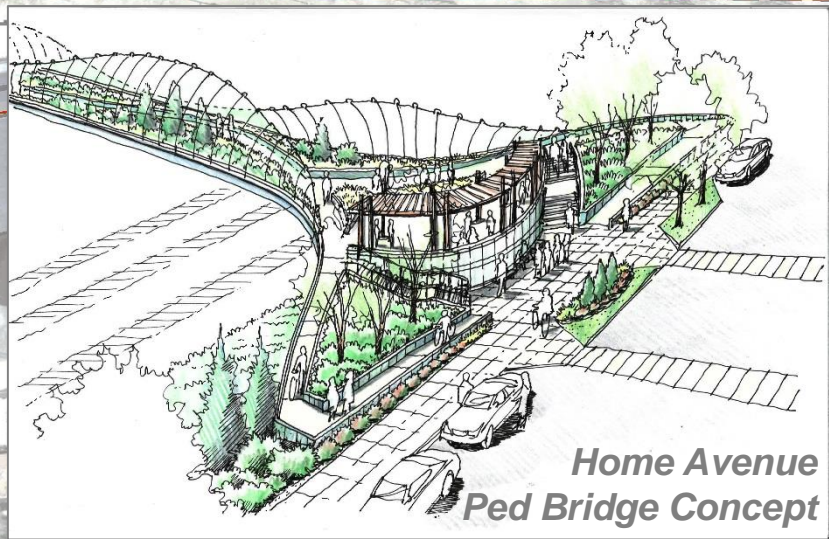
Home Avenue Ped Bridge
Linear Park Concept
Hardscape opportunities, street furniture
Decorative railing/fence, arching feature

Community Level Green Space
Landscaping/native plantings

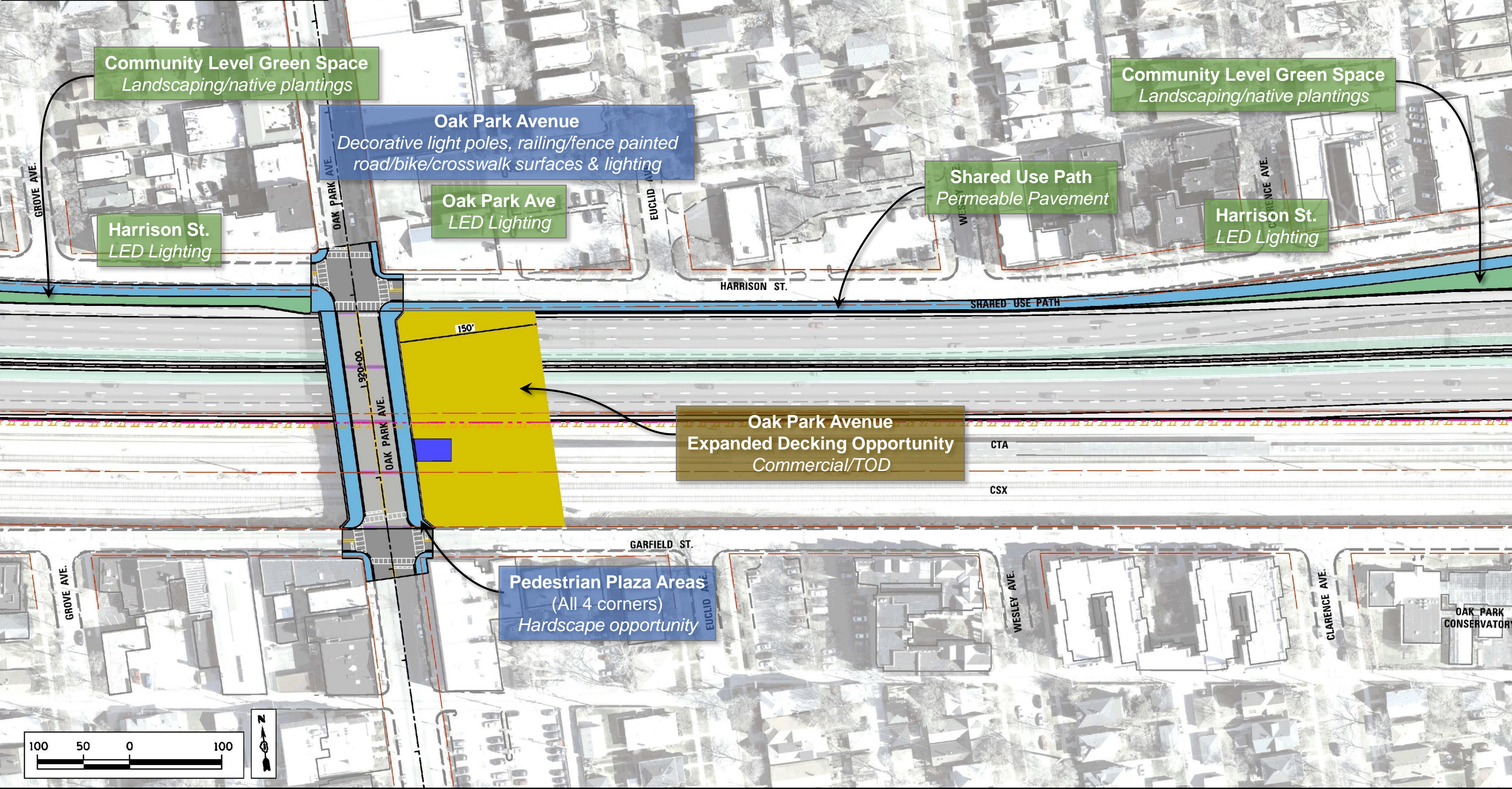
Harrison St.
LED Lighting

Harrison St.
LED Lighting

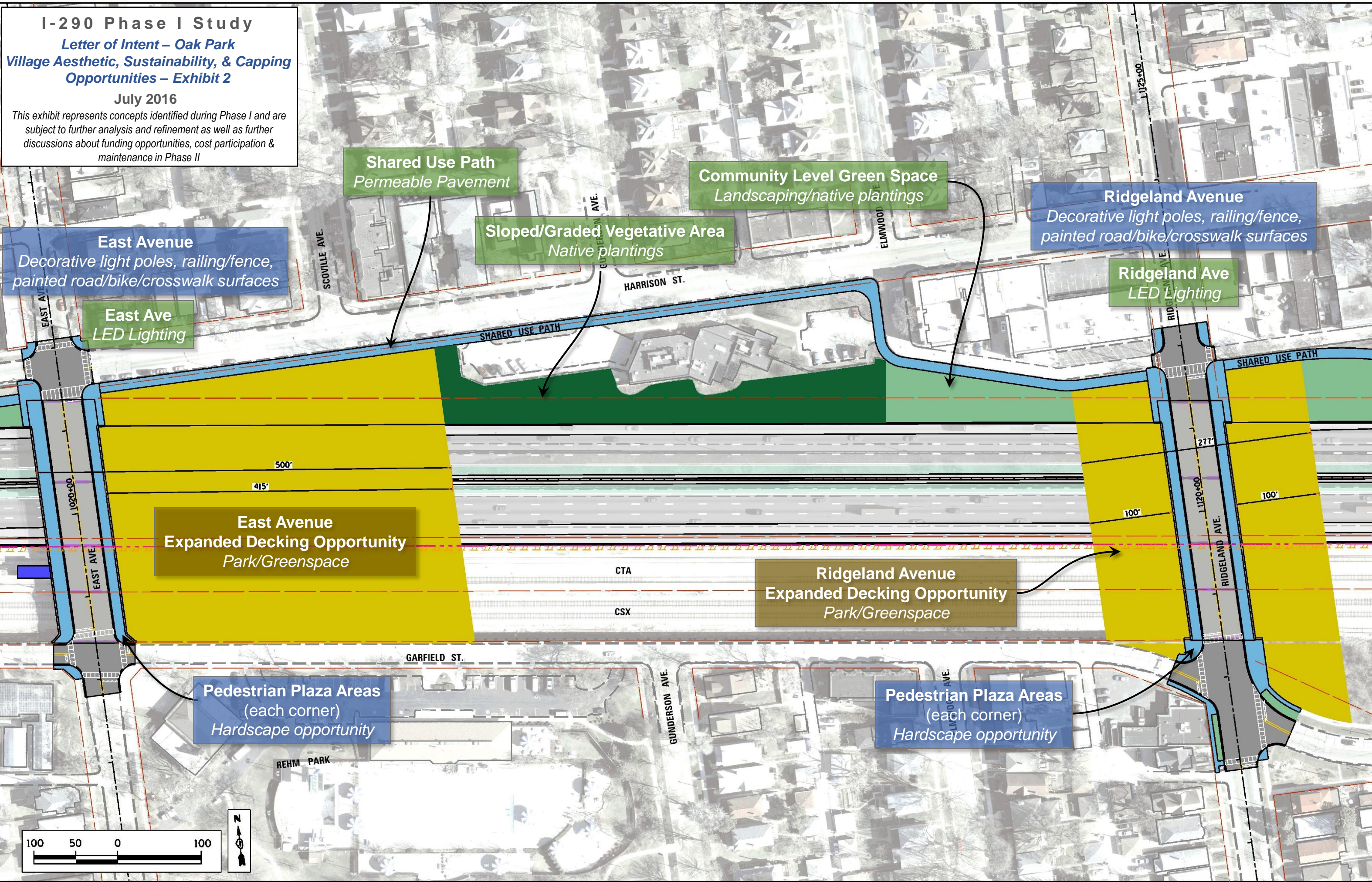
Home Ave Ped Bridge
LED Lighting



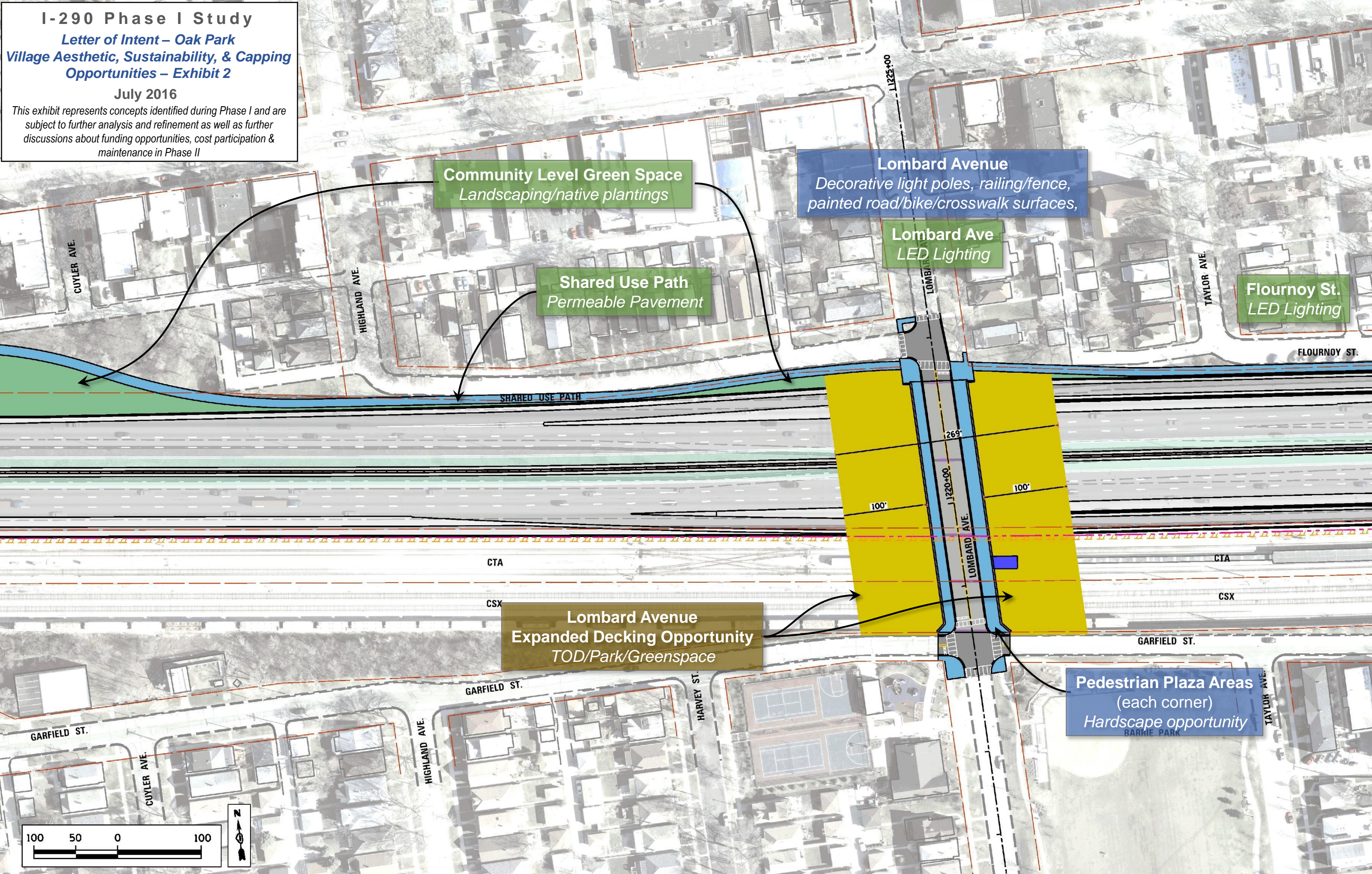
I-290 Phase I Study
Letter of Intent – Oak Park
Village Aesthetic, Sustainability, & Capping
Opportunities – Exhibit 2
July 2016
This exhibit represents concepts identified during Phase I and are subject to further analysis and refinement as well as further discussions about funding opportunities, cost participation & maintenance in Phase II



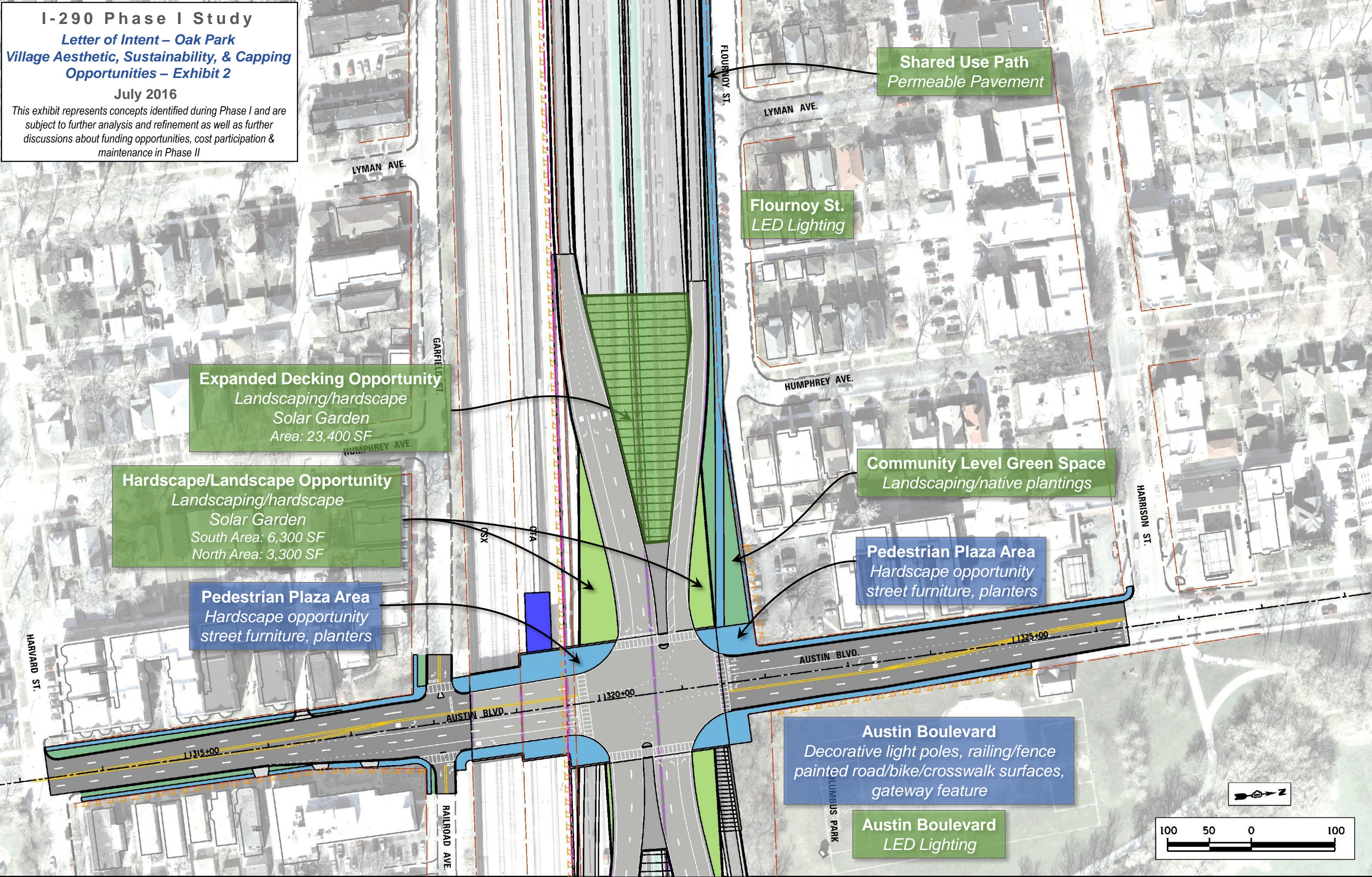
I-290 Phase I Study
Letter of Intent – Oak Park
Village Aesthetic, Sustainability, & Capping
Opportunities – Exhibit 2
July 2016
This exhibit represents concepts identified during Phase I and are subject to further analysis and refinement as well as further discussions about funding opportunities, cost participation & maintenance in Phase II



I-290 Phase I Study
Letter of Intent – Oak Park
Village Aesthetic, Sustainability, & Capping
Opportunities – Exhibit 2
July 2016
This exhibit represents concepts identified during Phase I and are subject to further analysis and refinement as well as further discussions about funding opportunities, cost participation & maintenance in Phase II



I-290 Phase I Study
Letter of Intent – Oak Park
Village Aesthetic, Sustainability, & Capping
Opportunities – Exhibit 2
July 2016
This exhibit represents concepts identified during Phase I and are subject to further analysis and refinement as well as further discussions about funding opportunities, cost participation & maintenance in Phase II



Expanded Decking Opportunity
*Landscaping/hardscape
Solar Garden
Area: 23,400 SF*

Hardscape/Landscape Opportunity
*Landscaping/hardscape
Solar Garden
South Area: 6,300 SF
North Area: 3,300 SF*

Pedestrian Plaza Area
*Hardscape opportunity
street furniture, planters*

**Flournoy St.
LED Lighting**

**Shared Use Path
Permeable Pavement**

Community Level Green Space
Landscaping/native plantings

Pedestrian Plaza Area
*Hardscape opportunity
street furniture, planters*

Austin Boulevard
*Decorative light poles, railing/fence
painted road/bike/crosswalk surfaces,
gateway feature*

**Austin Boulevard
LED Lighting**

