

F. A. I. ROUTE NO.	SEC.	EXPRESSWAYS	TOTAL SHEETS	SHEET NO.
STA.	TO STA.			
FED. ROAD DIST. NO. 7	ILLINOIS	FED. AID PROJECT		

MAINTENANCE PROCEDURE

14" SEWER

- STEP 1 REMOVE APPROPRIATE STOP-PLANKS FROM RACK AND PLACE IN GROOVE TO DAM THE 14" OPENING IN NORTH CHAMBER.
- STEP 2 REPEAT STEP 1 IN SOUTH CHAMBER. (RACK IN LOWER CHAMBER).
- STEP 3a LOOSEN BOLT IN 21" DIA. BLIND FLANGE IN NORTH CHAMBER - BUT DO NOT REMOVE COMPLETELY.
- 3b ALLOW WATER IN PIPE TO FLOW OUT FROM SIDE OF LOOSENED FLANGE.
- 3c AFTER PIPE IS COMPLETELY DRAINED, REMOVE THE BLIND FLANGE USING BLOCK AND TACKLE HOOKED TO IRON BAR PROVIDED IN CEILING.
- 3d REMOVE 21" DIA. BLIND FLANGE IN SOUTH CHAMBER AS IN "3c". THE PIPE IS NOW READY FOR INSPECTION AND CLEANING.
- STEP 4 AFTER PIPE IS CLEANED, REPLACE THE BLIND FLANGES IN BOTH CHAMBERS. REMOVE AND RETURN THE STOP-PLANKS TO THE RACK, FIRST IN THE SOUTH CHAMBER THEN IN THE NORTH CHAMBER.

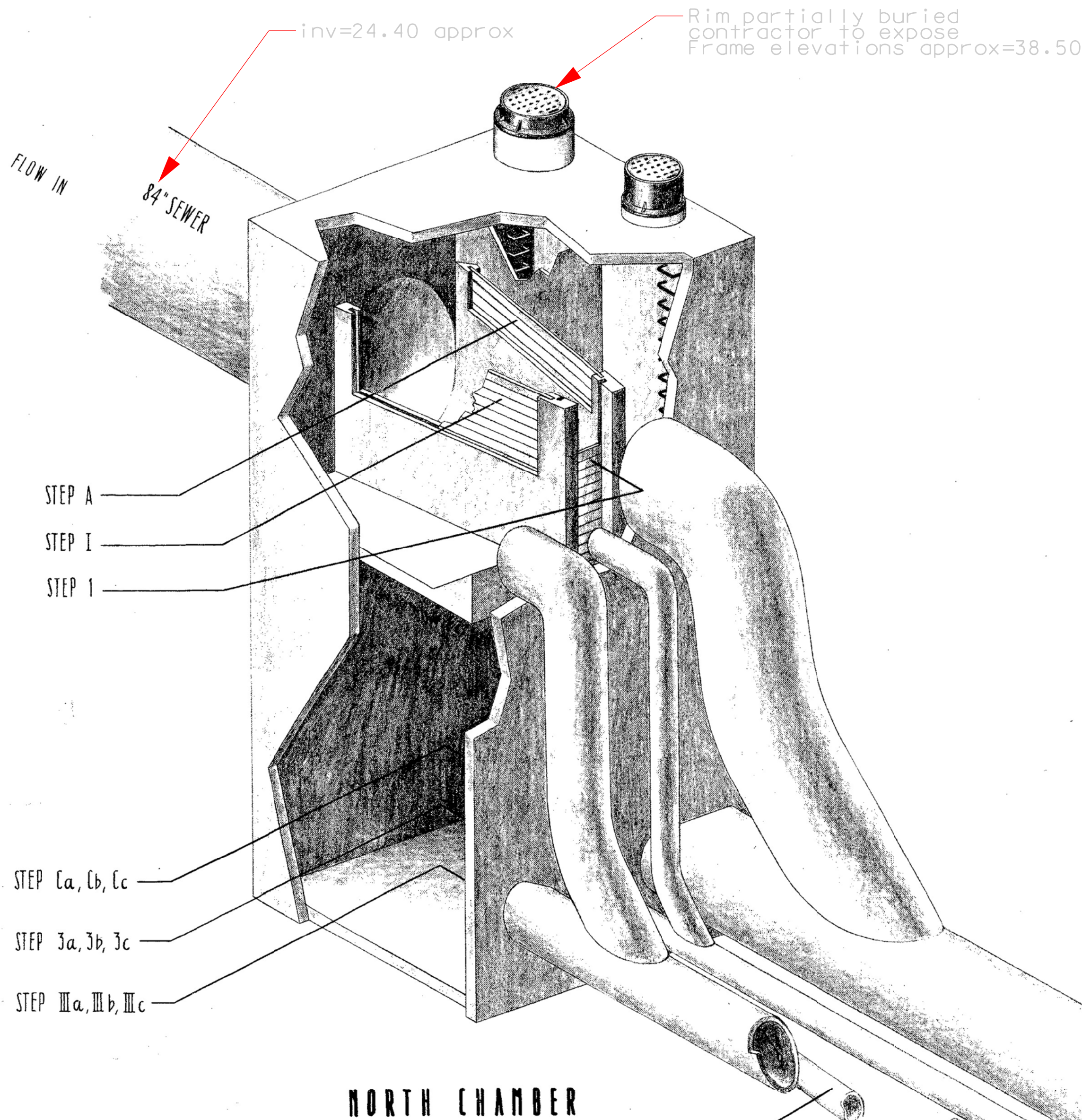
30" SEWER

- STEP I REMOVE APPROPRIATE STOP-PLANKS FROM RACK AND PLACE IN GROOVE TO DAM THE 30" OPENING IN NORTH CHAMBER.
- STEP II REPEAT STEP I IN SOUTH CHAMBER. (RACK IN LOWER CHAMBER).
- STEP IIIa LOOSEN BOLT IN WEST 32" DIA. BLIND FLANGE IN NORTH CHAMBER - BUT DO NOT REMOVE COMPLETELY.
- IIIb ALLOW WATER IN PIPE TO FLOW OUT FROM SIDE OF LOOSENED FLANGE.
- IIIc AFTER PIPE IS COMPLETELY DRAINED, REMOVE THE BLIND FLANGE USING BLOCK AND TACKLE HOOKED TO IRON BAR PROVIDED IN CEILING.
- IIIc REMOVE WEST 32" DIA. BLIND FLANGE IN NORTH CHAMBER AS IN "IIIc". THE PIPE IS NOW READY FOR INSPECTION AND CLEANING.
- STEP IV AFTER PIPE IS CLEANED, REPLACE THE BLIND FLANGES IN BOTH CHAMBERS. REMOVE AND RETURN THE STOP-PLANKS TO THE RACK, FIRST IN THE SOUTH CHAMBER THEN IN THE NORTH CHAMBER.

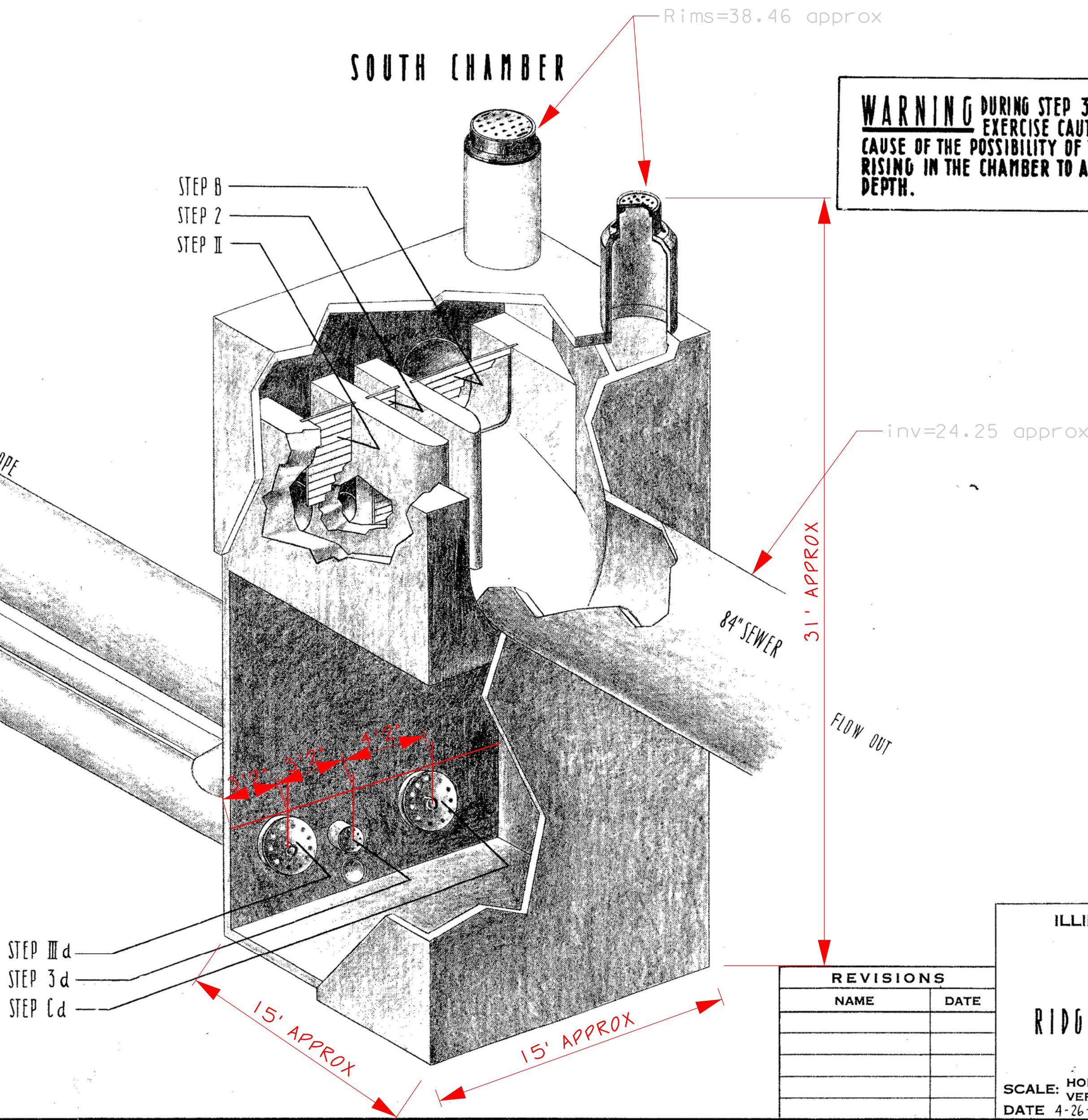
54" SEWER

- STEP A REMOVE APPROPRIATE STOP-PLANKS FROM RACK AND PLACE IN GROOVE TO DAM THE 54" OPENING IN NORTH CHAMBER.
- STEP B REPEAT STEP A IN SOUTH CHAMBER. (RACK IN LOWER CHAMBER).
- STEP Ca LOOSEN BOLT IN EAST 32" DIA. BLIND FLANGE IN NORTH CHAMBER - BUT DO NOT REMOVE COMPLETELY.
- Cb ALLOW WATER IN PIPE TO FLOW OUT FROM SIDE OF LOOSENED FLANGE.
- Cc AFTER PIPE IS COMPLETELY DRAINED, REMOVE THE BLIND FLANGE USING BLOCK AND TACKLE HOOKED TO IRON BAR PROVIDED IN CEILING.
- Cd REMOVE EAST 32" DIA. BLIND FLANGE IN NORTH CHAMBER AS IN "Cc". THE PIPE IS NOW READY FOR INSPECTION AND CLEANING.
- STEP D AFTER PIPE IS CLEANED, REPLACE THE BLIND FLANGES IN BOTH CHAMBERS. REMOVE AND RETURN THE STOP-PLANKS TO THE RACK, FIRST IN THE SOUTH CHAMBER THEN IN THE NORTH CHAMBER.

MAINTENANCE PROCEDURE, AS OUTLINED ABOVE, SHALL BE FULLY COMPLETED ON EACH PIPE BEFORE PROCEEDING TO THE NEXT PIPE.



GENERAL INFORMATION			
FLANGE DIA.	DIA. OF BOLTS	LENGTH OF BOLTS	APPROX. FLANGE WEIGHT
21" 32"	1" 1 1/4"	4 1/4" 5 1/2"	130 # 300 #
APPROXIMATE VOLUME OF WATER IN 14" PIPE • 4,000 GALS. APPROXIMATE VOLUME OF WATER IN 30" PIPE • 15,000 GALS. APPROXIMATE VOLUME OF WATER IN 54" PIPE • 48,000 GALS.			



REVISIONS	
NAME	DATE

ILLINOIS DIVISION OF HIGHWAYS
CONGRESS STREET EXPRESSWAY

RIDGELAND AVE. SEWER SIPHON

SCALE: HORIZ.
VERT.
DATE 4-26-61

DRAWN BY H.E.T.
CHECKED BY