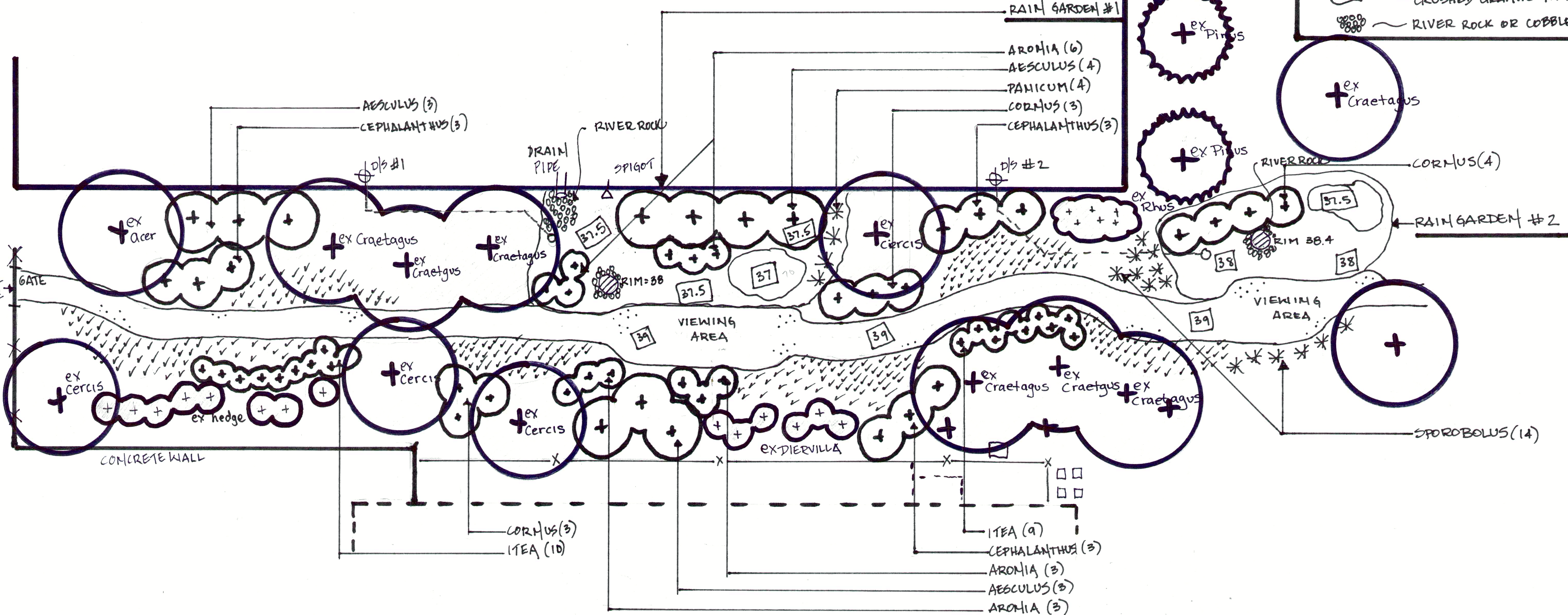


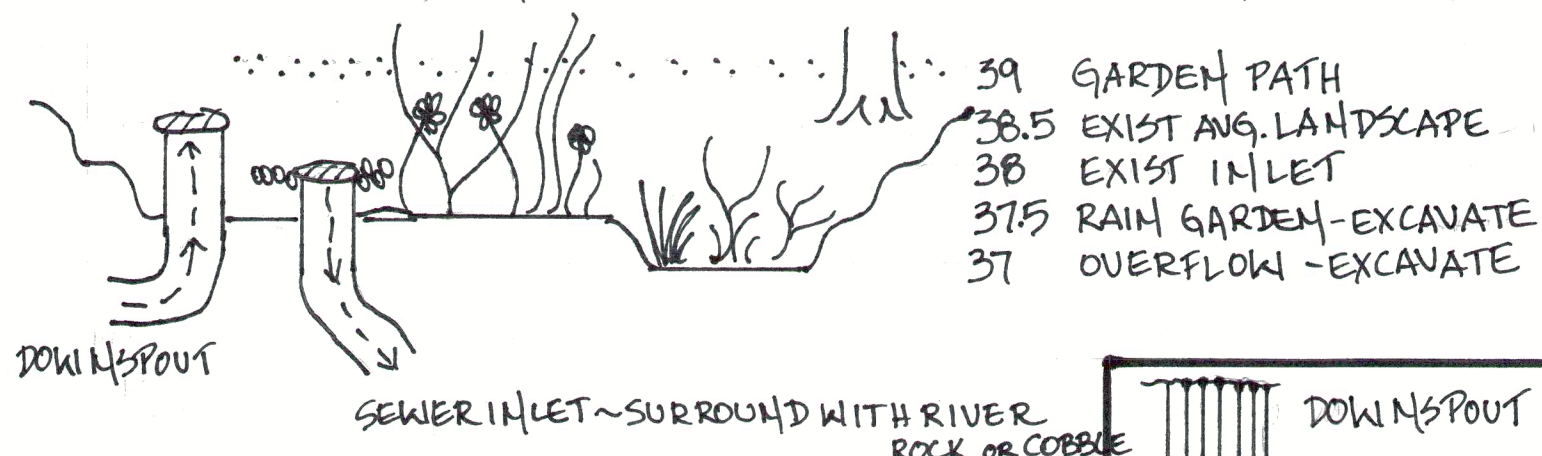
# PUBLIC WORKS BUILDING

## KEY

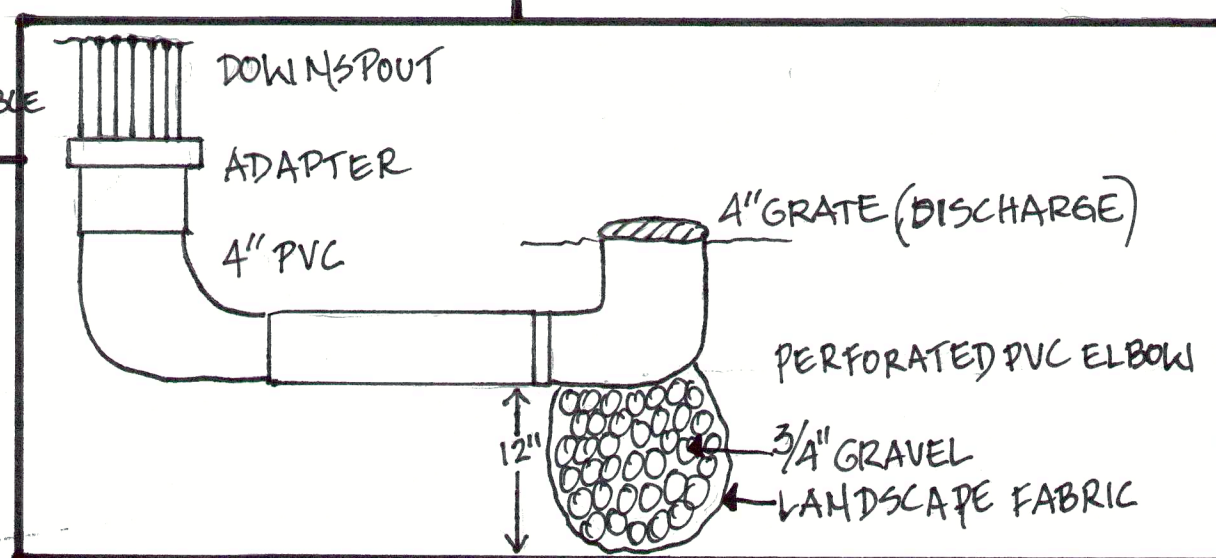
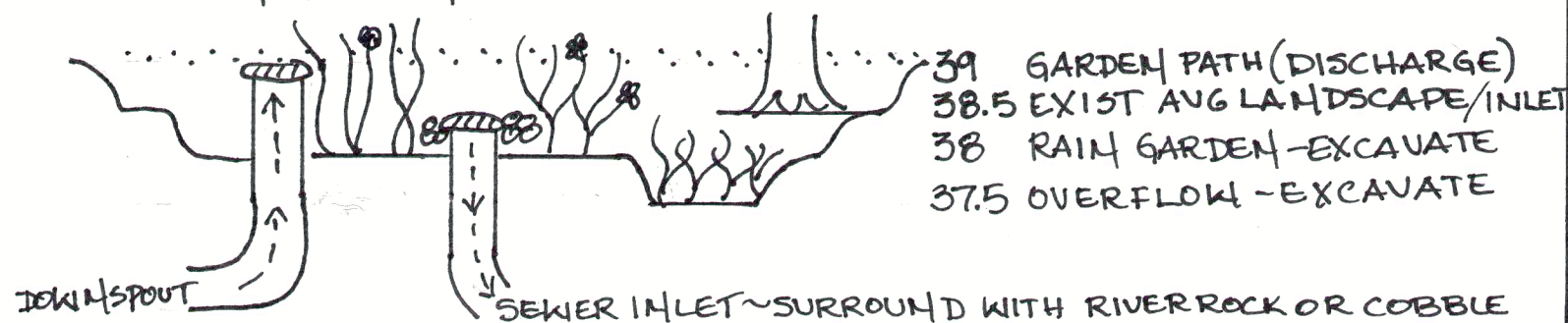
- + DECIDUOUS WOODY
- \* ORNAMENTAL GRASS
- vvvv SEDGE WAKIN - 700 SQ. FT.
- 37 DEFINED GRADE
- o- DOWNSPOUT DISCHARGE
- o CRUSHED GRANITE PATH
- o RIVER ROCK OR COBBLES



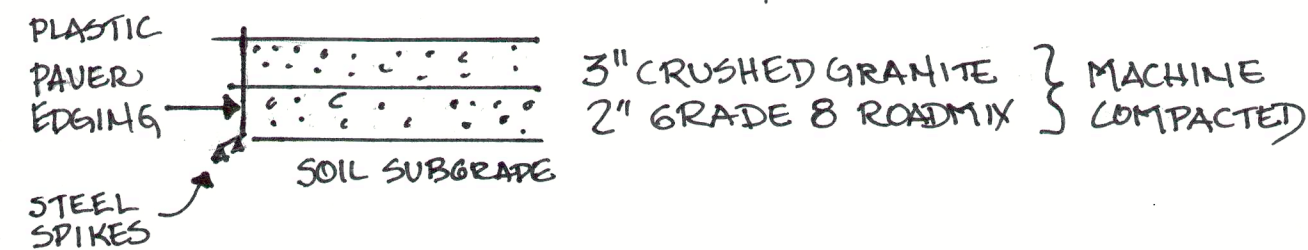
## RAIN GARDEN #1 ELEVATION (600 SQ. FT.)



## RAIN GARDEN #2 ELEVATION (360 SQ. FT.)



## GRAVEL PATH ELEVATION ~ 850 SQ. FT.







Oak Park Rain Garden  
photo-realistic image for concept purposes only  
Dig Right In Landscaping, Inc.

# Landscape design created by Dig Right In Landscaping, Inc

Village of Oak Park Department of Public Works  
John Wielebnicki  
201 South Boulevard  
Oak Park, Illinois 60302

11/30/16

Design consists of area located on the south side of the Public Works building with 8,600 sq. ft. of which we are managing 5,400 gallons in a 1" rainfall.

Two downspouts discharge from building and will be managed into two rain gardens:

Total square footage of rain gardens is 960 square feet; 810 sq. ft. excavation depth of 6" and 150 sq. ft. excavation depth of 12" for total capacity of 4,100 gallons before entering public storm drain. Additional infiltration will be supported by 12" of clay soil growing medium amended with 40% sand, 20% topsoil and 20% (village program) compost.

Machine-compacted gravel path approximately 850 sq. ft. designed for walking access through the garden and allows for two viewing areas in front of each rain garden.

Native plants and nativar ornamentals are used in both rain gardens and throughout the landscape.

All existing trees and shrubs remain. All turf grass removed and replaced with sedge lawns.

**Drainage & Rain Garden Materials and Disposals:**

<u>QTY</u>	<u>Unit</u>	<u>Material</u>
(2)	Each	NDS downspout adapters with attachment hardware
(2)	Each	4" NDS round grates
(65)	LF	SDR-26 4" PVC pipe
(6)	Each	SDR-26 4" PVC pipe angle joints
(2)	50#	Large pea gravel; installed at base of elbow
(60)	SF	Landscape fabric wrapped around pea gravel
(1)	CY	¾" washed gravel or small cobbles installed around sewer inlet
(21)	CY	(DISPOSAL) of clay soil growing medium
(14)	CY	sand (rototilled with 7 CY existing clay)
(7)	CY	topsoil (rototilled with 7 CY existing clay)
(7)	CY	compost (rototilled with 7 CY existing clay) from Village program

**Path and Garden Materials and Disposals:**

<u>QTY</u>	<u>Unit</u>	<u>Material</u>
(380)	LF	Plastic paver edging and steel spikes
(8)	CY	Grade 8 Limestone Road-mix
(13)	CY	Soil/Turf excavation and DISPOSAL
(11)	CY	Crushed Granite decorative gravel
(30)	CY	Premium dark brown mulch, installed at a 3" depth

**Plant materials:**

#	Size	Common Name	Botanic Name	Variety
10	#5	Bottlebrush Buckeye	<i>Aesculus parviflora</i>	
12	#5	Red Chokeberry	<i>Aronia arbutifolia</i>	'Brilliantissima'
9	#5	Buttonbush	<i>Cephalanthus occidentalis</i>	
10	#5	Red Twig Dogwood	<i>Cornus sericea</i>	'Cardinal'
19	#3	Little Henry Sweetspire	<i>Itea virginica</i>	'Sprich'
4	#1	Switchgrass	<i>Panicum virgatum</i>	'Northwind'
14	#1	Prairie Dropseed	<i>Sporobolus heterolepis</i>	
<b>Perennials - Rain Garden #1</b>				
<b>Planted @ 37.5 elevation</b>				
5	#1	False Indigo	<i>Baptisia australis</i>	
8	#1	Turtlehead	<i>Chelone glabra</i>	'Hot Lips'
9	#1	Rough Blazing Star	<i>Liatris aspera</i>	
6	#1	New England Aster	<i>Symphyotrichum novae-angliae</i>	
<b>Planted @ 37 elevation</b>				
5	#1	Swamp Milkweed	<i>Asclepias incarnata</i>	
5	#1	Blue Flag Iris	<i>Iris versicolor</i>	
5	#1	Great Blue Lobelia	<i>Lobelia siphilitica</i>	
<b>Perennials - Rain Garden #2</b>				
<b>Planted @ 38 elevation</b>				
18	#1	Ice Dance Sedge	<i>Carex morrowii</i>	'Ice Dance'
23	#1	Pale Purple Coneflower	<i>Echinacea pallida</i>	
17	#1	Husker Red Beardtongue	<i>Penstemon digitalis</i>	'Husker Red'
<b>Planted @ 37.5 elevation</b>				
9	#1	Swamp Milkweed	<i>Asclepias incarnata</i>	
4	#1	Bowles Golden Sedge	<i>Carex elata</i>	'Bowles Golden'
5	#1	Cardinal Flower	<i>Lobelia cardinalis</i>	
<b>Sedge Lawns</b>				
260	plug	Common Oak Sedge (18" o/c)	<i>Carex pensylvanica</i>	
200	plug	Straight-styled Wood Sedge (12" o/c)	<i>Carex radiata</i>	
200	plug	Curly-styled Wood Sedge (12" o/c)	<i>Carex rosea</i>	
197	<b>Total Plants (660 sedge plugs not included)</b>			