

EXTERIOR FINISH LEGEND:

- 01. WOO CLAD WINDOW W/ TRANSOM WINDOW
- 02. PRECAST STONE
- 03. MASONTY UNIT (COLOR #1)
- 04. PRECAST STONE BAND
- 05. MASONRY UNIT (COLOR #2)
- 06. METAL BALCONY
- 07. 4" STONE BAND
- 08. 4" STONE SILL
- 09. WOOD CLAD WINDOW
- 10. SLIDING DOOR W/ TRANSOM WINDOW
- 11. METAL GUARDRAIL
- 12. STONE CAP
- 13. 2" STONE BAND
- 14. PRECAST 10" x 6" STONE BAND
- 15. ALUMINUM COPING
- 16. WOOD CLAD WINDOW (AWNING)
- 17. ALUMINUM STOREFRONT DOOR
- 18. NEW WOOD CLAD SLIDER W/ TRANSOM WINDOW
- 19. NEW STOREFRONT DOOR
- 20. EXISTING 1 STORY MASONRY BUILDING TO REMAIN
- 21. BAY WINDOW BEYOND
- 22. WALL MOUNTED LIGHT FIXTURE
- 23. CEMENT BOARD PANELING SYSTEM
- 24. 12" PRECAST STONE HEADER
- 25. LOUVER FOR EXHAUST FAN (SEE MECHANICAL PLANS FOR DETAILS)
- 26. INSULATED OVERHEAD GARAGE DOOR
- 27. 60" ALUMINUM FENCE W/ 3' WIDE GATE
- 28. CANTILEVERED PREFABRICATED METAL BALCONY
- 29. 8" CEMENT BOARD SIDING



John Conrad Schiess
Architect+LEED AP
john@jcsarchitect.com
708 366 1500

office
400 Ashland Avenue
River Forest, Illinois 60305
studio
Oak Park, Illinois 60302

jcsarchitect.com

architecture +

John Conrad Schiess Architect, Ltd.

COPYRIGHT: John Conrad Schiess
expressly reserves their common law copyright
and other copyrights in these plans. These
plans contain original material and ideas.
These plans are not to be reproduced changed
or copied in any form or manner whatsoever,
nor are they to be assigned to any third party,
without first obtaining the express written
permission and consent of John Conrad
Schiess.

I hereby certify that these plans were prepared
under my direction and, to the best of my
knowledge and belief, conform to the applicable
Codes and Ordinances of the VILLAGE OF
OAK PARK, Illinois.



Expiration 11/30/20

Design Firm License No: 184.007511-0001

Project No: 03212017

JAN. 18 , 2019, REV. BLDG. PERMIT
OCT. 1 , 2018 , BLDG. PERMIT + BID
AUG. 23, 2018, BID
Issued for

THE RESIDENCES
at
NORTHEAST OP

6553-6557
North Avenue
Oak Park, Illinois

Sheet Title
ELEVATIONS

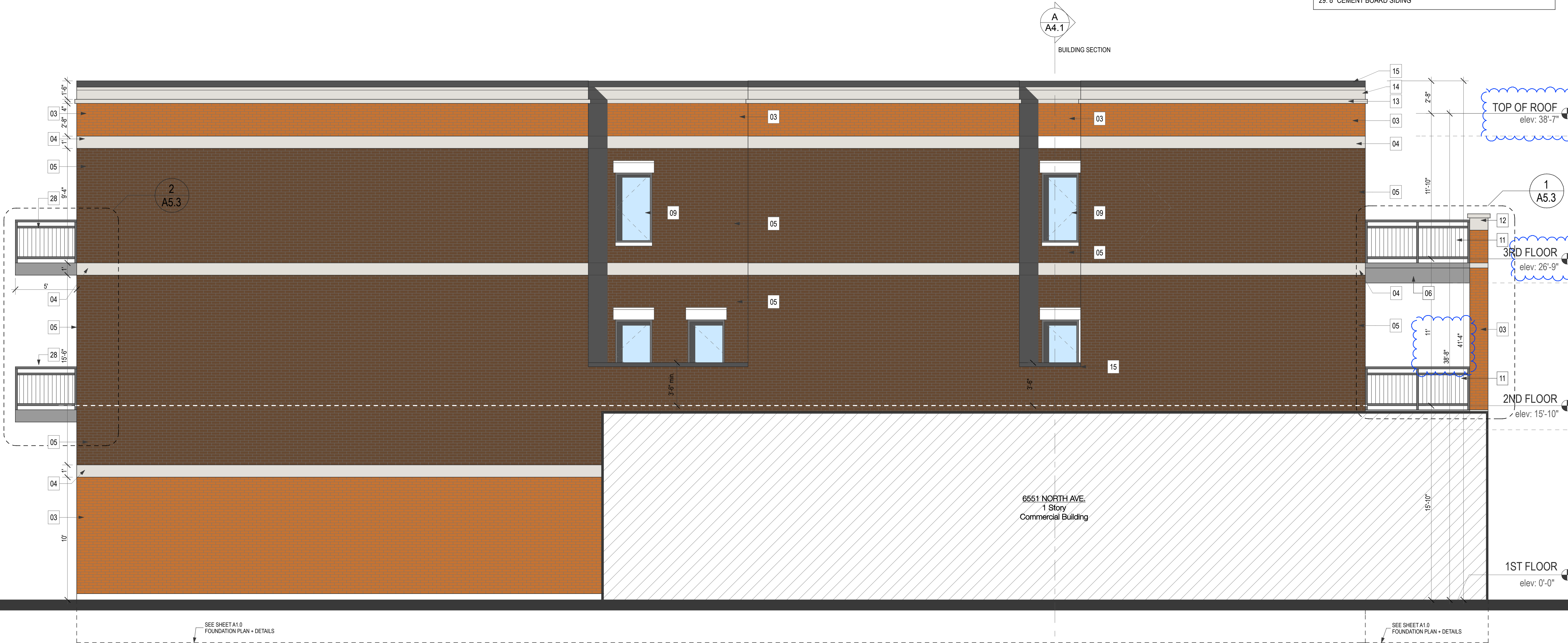
A3.4

Sheet No.

A

A4.1

BUILDING SECTION



EAST ELEVATION

SCALE: 1/4" = 1'-0"