

ADDENDUM NO. 1

July 6, 2020

Pavement Preservation

PROJECT NO. 20-6

VILLAGE OF OAK PARK

COOK COUNTY, ILLINOIS

BID DATE: 1:00 PM, JULY 16, 2020

This addendum forms a part of the Contract Documents and amends the original documents, the Plans and Special Provisions. Where any part of the contract documents is amended, the unaltered provisions are to remain in effect.

- 1. Contract > page 6 Schedule of Prices > NEW pay item #18 and adjusted patching items quantities:**
 - REPLACE existing page #6 with revised from attached "Contract_page-6-REVISED.pdf"
- 2. Special Provisions> pages 7 and 8, text starting with "The Village of Oak Park requires" and ending with "Material Inspection and Testing", due to typo:**
 - REPLACE existing pages 7 and 8 with revised from attached "Pages_7_and_8_of_part2-REVISED.pdf"
- 3. Special Provisions> page 20&21, item Traffic Control and Protection revised due to added pay item**
 - REPLACE existing special provision with revised from attached TCP-REVISED-from_part2_SpecialProvision.pdf
- 4. Special Provision > for NEW pay item #18 :**
 - ADD attached Standard 7001606 Std_701606_MajorStreets.pdf
- 5. Maps:**
 - REPLACE existing original maps with new from attached files "part3_***_map*_REVISED.pdf"

Roman Babinski PE
Village of Oak Park

SCHEDULE OF PRICES

SOP	PAYITEM	UNIT	QUANTITY	UNIT PRICE	TOTAL
1	FIBER MODIFIED ASPHALT CRACK SEALING	POUND	40,000		
2	MICROSURFACING, 1 PASS TYPE II @ 20 LBS/SY	SQ YD	82,300		
3	PAVEMENT MARKING REMOVAL	SQ FT	3,330		
4	THERMOPLASTIC PAVEMENT MARKING LINE L@S	SQ FT	60		
5	THERMOPLASTIC PAVEMENT MARKING LINE 4"	FOOT	1,800		
6	THERMOPLASTIC PAVEMENT MARKING LINE 6"	FOOT	2,110		
7	THERMOPLASTIC PAVEMENT MARKING LINE 12"	FOOT	3,160		
8	THERMOPLASTIC PAVEMENT MARKING LINE 24"	FOOT	1,180		
9	BITUMINOUS MATERIAL PRIME COAT, ART 406	POUND	8,230		
10	FINE AGGREGATE (FA-6)	TON	10		
11	TRAFFIC CONTROL AND PROTECTION	LUMPSUM	1		
12	BITUMINOUS SURFACE PATCHING 2", TY-II	SQ YD	750		
13	BITUMINOUS SURFACE PATCHING 2", TY-III	SQ YD	550		
14	BITUMINOUS SURFACE PATCHING 2", TY-IV	SQ YD	2,130		
15	BITUMINOUS SURFACE PATCHING 4", TY-II	SQ YD	20		
16	BITUMINOUS SURFACE PATCHING 4", TY-III	SQ YD	80		
17	BITUMINOUS SURFACE PATCHING 4", TY-IV	SQ YD	600		
18	TRAFFIC CONTROL AND PROTECTION STANDARD 701606 MAJOR STREETS	LUMPSUM	1		

TOTAL:

The Village of Oak Park requires a notice of a street closure. The Contractor must notify the Police Dept. and Fire Dept. of these closures.

When the Contractor will be working on a block that requires closure and/or changes to parking restrictions they must coordinate with the Parking Dept. to develop an alternate parking plan for permitted parkers and provide information and notice so residents/permitted parkers are aware of their alternatives.

This item shall be considered incidental to the contract and no additional compensation will be made to comply with the requirements as set forth in the standards outlined above.

19. USE OF FIRE HYDRANTS

If the Contractor desires to use water from fire hydrants, meters and keys shall be obtained from Water and Sewer Department with a \$1000.00 deposit. This applies to all pay items which require using the water, including but not limited to parkway restoration, watering plants, dust control, maintenance of roadways, trenches jetting, asphalt cold milling operations, asphalt rolling operations, etc.

The Contractor shall be held responsible for any damage to fire hydrants, meters, and keys resulting from the operations of his equipment or men. The damaged parts and/or tools shall be replaced and/or repaired by the contractor at his expense to the satisfaction of the Water and Sewer Supervisor and project Engineer.

Fire hydrants shall be accessible at all times to the Fire Department. No materials or other obstructions shall be placed closer to a fire hydrant than 15 feet. Any arrangements of less than 15 feet must be approved by the Fire Department.

20. DISPOSAL OF DEBRIS AND EXCAVATED OR REMOVED MATERIALS

The Contractor is responsible for removal and disposal of all waste material, asphalt, grindings, concrete, stone, dirt or debris generated in the course of the work. The temporary storing of excavated materials on the parkways is not allowed. It shall be the Contractor's responsibility to find an approved dump site for debris and any excavated material.

21. TRAFFIC CONTROL AND PROTECTION

Traffic control shall be in accordance with the applicable sections of the Standard Specifications for Road and Bridge Construction Section 700, the applicable guidelines contained in the Illinois Manual on Uniform Traffic Control Devices for Streets and Highways, these special provisions, and any special details and Highway Standards.

During patching operations the contractor or sub-contractor shall maintain through traffic at all times and shall furnish all necessary signs, markings, cones, barricades, warning lights, flagmen and other traffic control devices as may be required to provide for a safe work environment.

Patching work in the alleys shall be coordinated with garbage pick-up schedules. Contractor shall contact Public Works to obtain maps.

During crack-fill operations and curing time the contractor shall maintain through traffic at all times and shall furnish all necessary signs, markings, cones, barricades, warning lights, flagmen and other traffic control devices as may be required to provide for a safe work environment.

During micro-paving operation and curing time the contractor shall keep the street closed and shall furnish all necessary signs, markings, cones, barricades, warning lights, flagmen and other traffic control devices as may be required to provide for a safe work environment.

This item will be considered incidental to the contract and no additional compensation will be made to comply with the requirements as set forth in the standards outlined above.

22. FINAL PAYMENT AND RETAINAGE

Payments to the Contractor shall be made as estimates of satisfactory work completed to date minus a 5% (five percent) retainage. Final payment and any remaining retention shall be made upon satisfactory completion of contracted work, submission of material quantity tickets and certified payroll.

23. DEFICIENCY DEDUCTIONS

In addition to Article 105.03 (a - d):

e) Small Quantities and Low Priced Pay-items Deficiency Deductions.

If the Contractor fails to address or correct deficiencies of small quantities or low priced pay-items within specified time frame, a daily deduction up to \$1,000 will be imposed for every working day or fraction after specified time frame until deficiency is corrected. The specified time, which begins upon notification, will be from ½ hour to 10 working days based on the urgency of the situation and the nature of the deficiency. The Engineer will be a sole judge.

A deficiency may be any lack of repair, maintenance, or non-compliance with specifications. Small quantities and low priced pay-items include but are not limited to prime coat, protective coat, temporary ramps, cleanup, protecting sewer system, and other items which are incidental or result in low total cost, but are essential to quality of final product or public safety.

24. QUALITY CONTROL, QUALITY ASSURANCE

Material Inspection and Testing

TRAFFIC CONTROL AND PROTECTION

Traffic control shall be in accordance with the applicable sections of the Standard Specifications for Road and Bridge Construction, the applicable guidelines contained in the Illinois Manual on Uniform Traffic Control Devices for Streets and Highways, these special provisions, and any special details and Highway Standards contained herein.

Prior to beginning work, the Contractor will furnish the name of the individual in his direct employ who is to be responsible for the installation and maintenance of the traffic control for this project. If the actual installation and maintenance are to be accomplished by a subcontractor, consent shall be requested of the Engineer in accordance with Article 108.01 of the Standard Specifications for Road and Bridge Construction. This shall not relieve the Contractor of the foregoing requirement for a responsible individual in his direct employ. The Village Engineering Division will provide the Contractor the name of its representative who will be responsible for the administration of the Traffic Control Plan.

Special attention is called to Articles 107.09 and 107.14 of the Standard Specifications for Road and Bridge Construction and the following 1) Highway Standards, 2) Supplemental Specifications and Supplemental Special Provisions, and 3) other special provisions relating to traffic control.

- 1) Article 107, 701, and 702 of the Standard Specifications
- 2) Utility work zone traffic control standards and guidelines

The contractor shall maintain through traffic at all times during the work period and shall furnish all necessary signs, markings, cones, barricades, warning lights, flagmen and other traffic control devices as shown on the attached drawings and/or as directed by the Engineer.

Barricades and/or cones used for channelization or delineation and warning signs shall subsequently placed in the direction of the traffic flow and removed in reverse order. Lane closure signs and flagmen signs shall be erected prior to barricades and/or cones and remain erected until such time as all traffic control devices have been removed from the pavement. All vehicles and/or non-operating equipment shall be parked at least eight (8') feet from the moving traffic stream during working hours except that privately owned vehicles by workers will not be allowed to park within the construction zone at any time.

During non-working hours, all vehicles and equipment shall be parked in an area approved by the Engineer. Work zone signs referring to temporary lane closures used during working hours shall be removed or covered during non-working hours. Flashing lights installed above the first two signs on each approach to a work area involving a night-time lane closure shall be high intensity units. These units shall operate 24 hours per day. Open flame burners will not be permitted. All traffic control devices shall meet the approval of the Engineer.

Towing of Vehicles Parked in Work Zone

It is the responsibility of the Contractor to keep the work zone clear of parked cars to be able to perform the necessary scheduled work activities. Areas which require clearance shall be properly posted with temporary "NO PARKING, CONSTRUCTION AREA, TOW ZONE" signs spaced a maximum of 200 feet apart. Also barricades shall be placed in the parking lane every 50 feet apart to warn potential parkers.

Should it be necessary to remove and relocate a vehicle the Contractor shall immediately notify the Engineer and/or VOP Police Department, to contact the Village's towing service for relocating said vehicle. The cost for this relocation shall be the responsibility of the Contractor and consider incidental to the Traffic Control and Protection pay item. If the area is not properly **posted 24 hours in advance**, no vehicle towing will be allowed.

Any delays or adjustment in work scheduling required due to illegally parked vehicle and their relocation will not be paid for separately but shall be considered incidental to the contract. Any outstanding charges not paid for by the contractor for this relocation service will be deducted from the final payment.

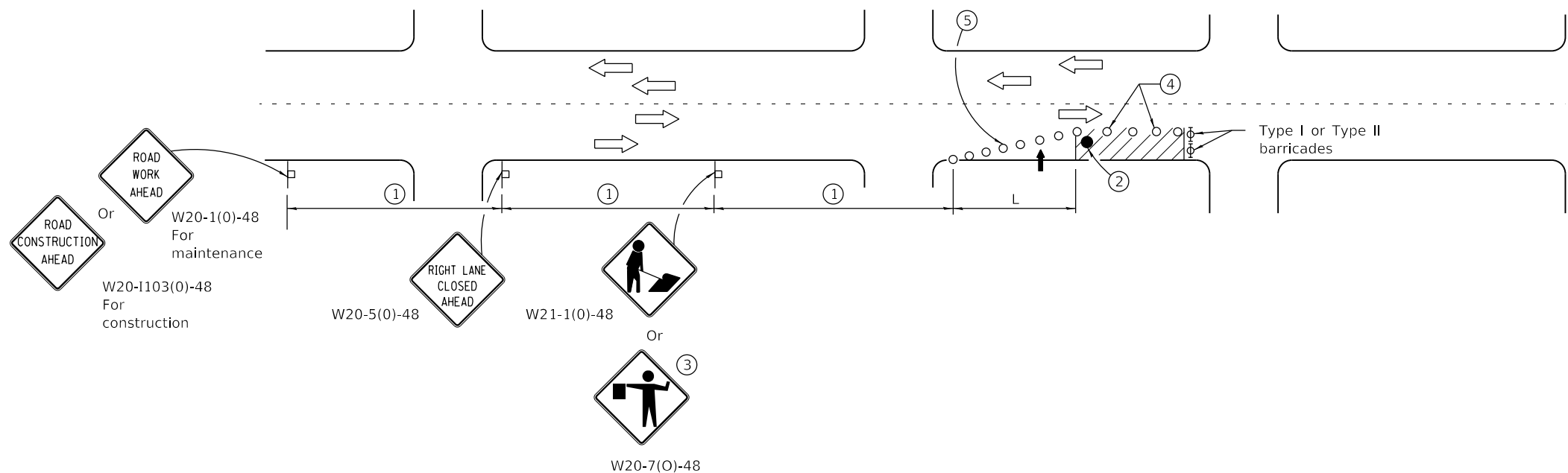
Traffic Control and Protection Standard 701606 Major Streets

Bituminous surface patching on major streets requires staging work to allow traffic in both directions. If necessary, the Contractor to provide No-Parking signs.

(see attachment)

BASIS OF PAYMENT

This item will be paid for at the contract **LUMP SUM** price for **TRAFFIC CONTROL AND PROTECTION LOCAL STREETS** and **TRAFFIC CONTROL AND PROTECTION STANDARD 701606 MAJOR STREETS** which shall be payment in full for compliance with the above requirements and for all labor, materials, transportation, handling and incidental work necessary to furnish, install, maintain, and remove all traffic control devices as specified herein.



SIGN SPACING	
Posted Speed	Sign Spacing
55	500' (150 m)
50-45	350' (100 m)
<45	200' (60 m)

SYMBOLS

- ↑ Arrow board
- Cone, drum or barricade
- ⌋ Sign on portable or permanent support
- ▨ Work area
- ⦿ Barricade or drum with flashing light
- Flagger with traffic control sign.

- ① Refer to SIGN SPACING TABLE for distances.
- ② Required for speeds > 40 mph.
- ③ Use flagger sign only when flagger is present.
- ④ Cones at 25' (8 m) centers for 250' (75 m). Additional cones may be placed at 50' (15 m) centers. When drums or Type I or Type II barricades are used, the interval between devices may be doubled.
- ⑤ Cones, drums or barricades at 20' (6 m) centers in taper.

GENERAL NOTES

This Standard is used where at any time, day or night, any vehicle, equipment, workers or their activities encroach on the pavement requiring the closure of one traffic lane in an Urban area.

Calculate L as follows:

SPEED LIMIT	FORMULAS	
	English	(Metric)
40 mph (70 km/h) or less:	$L = \frac{WS^2}{60}$	$L = \frac{WS^2}{150}$
45 mph (80 km/h) or greater:	$L = (W)(S)$	$L = 0.65(W)(S)$

W = Width of offset in feet (meters).


S = Normal posted speed mph (km/h).

All dimensions are in inches (millimeters) unless otherwise shown.

DATE	REVISIONS
1-1-15	Renamed standard. Moved case on Sheet 2 to new Highway Standard.
1-1-14	Revised workers sign number to agree with current MUTCD.

URBAN SINGLE LANE CLOSURE, MULTILANE, 2W WITH MOUNTABLE MEDIAN

STANDARD 701606-10

 Illinois Department of Transportation

PASSED January 1, 2015

ENGINEER OF SAFETY ENGINEERING

APPROVED January 1, 2015

ENGINEER OF DESIGN AND ENVIRONMENT

ISSUED 1-1-97



2020 PAVEMENT PRESERVATION CIP 20-6

Patching outside Microsurfacing
Includes:
**SURFACE PATCHING
CRACK FILLING**

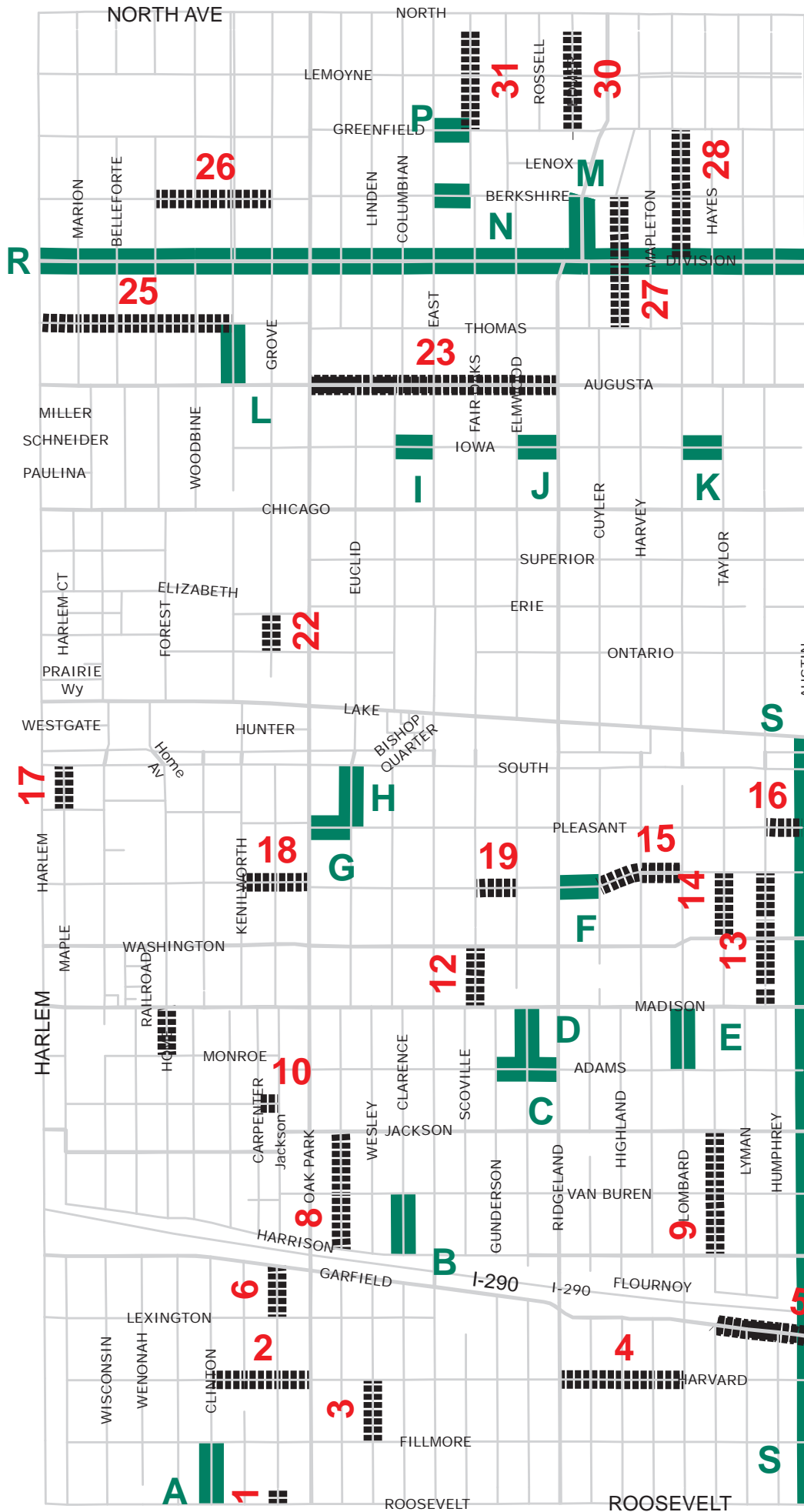
A	CLINTON AV	ROOSEVELT RD	to	FILLMORE ST
B	CLARENCE AV	HARRISON ST	to	VanBuren ST
C	ADAMS ST	GUNDERSON AV	to	RIDGELAND AV
D	ELMWOOD AV	MADISON ST	to	ADAMS ST
E	LOMBARD AV	MADISON ST	to	ADAMS ST
F	RANDOLPH ST	RIDGELAND AV	to	CUYLER AV
G	PLEASANT ST	EUCLID AV	to	OAK PARK AV
H	EUCLID AV	SOUTH BV	to	PLEASANT ST
I	IOWA ST	EAST AV	to	LINDEN AV
J	IOWA ST	RIDGELAND AV	to	ELMWOOD AV
K	IOWA ST	TAYLOR AV	to	LOMBARD AV
L	KENILWORTH AV	THOMAS ST	to	AUGUSTA ST
M	RIDGELAND AV	DIVISION ST	to	BERKSHIRE ST
N	BERKSHIRE ST	EAST AV	to	FAIR OAKS AV
P	GREENFIELD ST	FAIR OAKS AV	to	EAST AV
R	DIVISION	HARLEM	to	AUSTIN
S	AUSTIN BLVD	LAKE	to	ROOSEVELT

Microsurfacing

Includes:
**SURFACE PATCHING
CRACK FILLING
MICROSURFACING
PAVEMENT MARKINGS**

1	GROVE AV	ROOSEVELT RD	to	NORTH END
2	HARVARD ST	CLINTON AV	to	OAK PARK AV
3	WESLEY AV	FILLMORE ST	to	HARVARD ST
4	HARVARD ST	RIDGELAND AV	to	LOMBARD AV
5	GARFIELD ST	TAYLOR AV	to	AUSTIN BV
6	GROVE AV	GARFIELD ST	to	LEXINGTON ST
7				CANCELED
8	EUCLID AV	HARRISON ST	to	JACKSON BV
9	TAYLOR AV	HARRISON ST	to	JACKSON BV
10	ADAMS ST	CARPENTER AV	to	GROVE AV
11	HOME AV	MADISON ST	to	MONROE AV
12	SCOVILLE AV	MADISON ST	to	WASHINGTON BV
13	HUMPHREY AV	MADISON ST	to	RANDOLPH ST
14	TAYLOR AV	WASHINGTON BV	to	RANDOLPH ST
15	RANDOLPH ST	CUYLER AV	to	LOMBARD AV
16	PLEASANT ST	HUMPHREY AV	to	AUSTIN BV
17	MAPLE AV	PLEASANT ST	to	north end
18	RANDOLPH ST	KENILWORTH AV	to	OAK PARK AV
19	RANDOLPH ST	SCOVILLE AV	to	ELMWOOD AV
20				CANCELED
2021				
22	GROVE AV	ONTARIO ST	to	ERIE ST
23	AUGUSTA ST	OAK PARK AV	to	RIDGELAND AV
24				CANCELED
25	THOMAS ST	HARLEM AV	to	KENILWORTH AV
26	BERKSHIRE ST	FOREST AV	to	GROVE AV
27	HARVEY AV	THOMAS ST	to	GREENFIELD ST
28	LOMBARD AV	DIVISION ST	to	NORTH AV
29				CANCELED
30	EDMER AV	GREENFIELD ST	to	CDS N/LEMOYNE
31	FAIR OAKS AV	GREENFIELD ST	to	CDS N/LEMOYNE

NOTES:
- NOT ALL BLOCKS FOR MICROSURFACING
NEED SURFACE PATCHING
- NOT ALL BLOCKS OF DIVISION AND
AUSTIN NEED SURFACE PATCHING





2020 PAVEMENT PRESERVATION CIP 20-6

Microsurfacing

Includes:

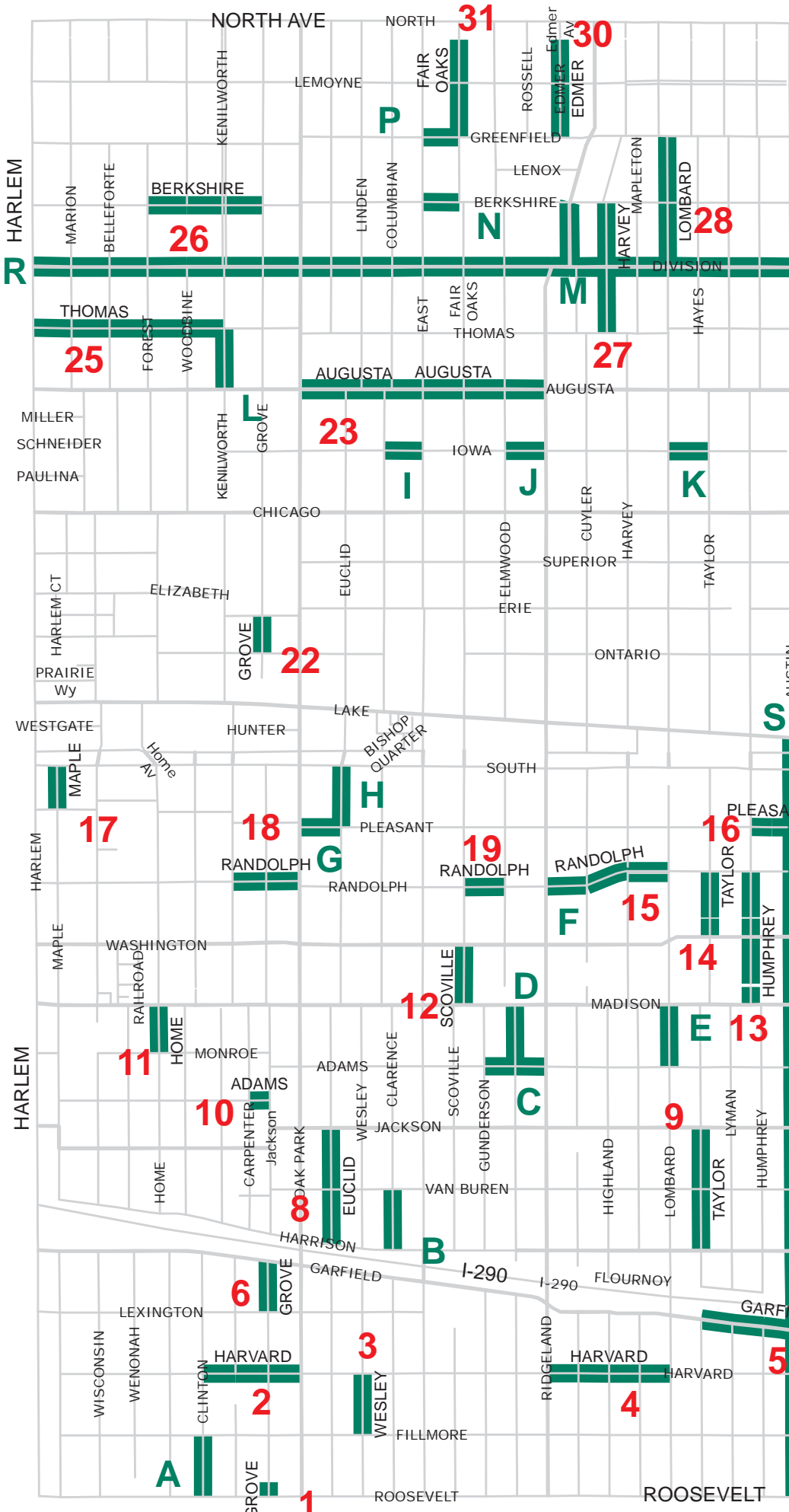
SURFACE PATCHING
CRACK FILLING
MICROSURFACING
PAVEMENT MARKINGS

1	GROVE AV	ROOSEVELT RD	to	NORTH END
2	HARVARD ST	CLINTON AV	to	OAK PARK AV
3	WESLEY AV	FILLMORE ST	to	HARVARD ST
4	HARVARD ST	RIDGELAND AV	to	LOMBARD AV
5	GARFIELD ST	TAYLOR AV	to	AUSTIN BV
6	GROVE AV	GARFIELD ST	to	LEXINGTON ST
7				CANCELED
8	EUCLID AV	HARRISON ST	to	JACKSON BV
9	TAYLOR AV	HARRISON ST	to	JACKSON BV
10	ADAMS ST	CARPENTER AV	to	GROVE AV
11	HOME AV	MADISON ST	to	MONROE AV
12	SCOVILLE AV	MADISON ST	to	WASHINGTON BV
13	HUMPHREY AV	MADISON ST	to	RANDOLPH ST
14	TAYLOR AV	WASHINGTON BV	to	RANDOLPH ST
15	RANDOLPH ST	CUYLER AV	to	LOMBARD AV
16	PLEASANT ST	HUMPHREY AV	to	AUSTIN BV
17	MAPLE AV	PLEASANT ST	to	north end
18	RANDOLPH ST	KENILWORTH AV	to	OAK PARK AV
19	RANDOLPH ST	SCOVILLE AV	to	ELMWOOD AV
20				CANCELED
21				CANCELED
22	GROVE AV	ONTARIO ST	to	ERIE ST
23	AUGUSTA ST	OAK PARK AV	to	RIDGELAND AV
24				CANCELED
25	THOMAS ST	HARLEM AV	to	KENILWORTH AV
26	BERKSHIRE ST	FOREST AV	to	GROVE AV
27	HARVEY AV	THOMAS ST	to	GREENFIELD ST
28	LOMBARD AV	DIVISION ST	to	NORTH AV
29				CANCELED
30	EDMER AV	GREENFIELD ST	to	CDS N/LEMOYNE
31	FAIR OAKS AV	GREENFIELD ST	to	CDS N/LEMOYNE

NOTES:

- NOT ALL BLOCKS FOR MICROSURFACING
NEED SURFACE PATCHING



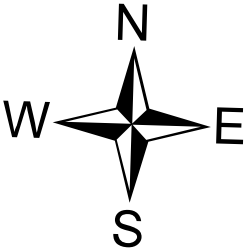
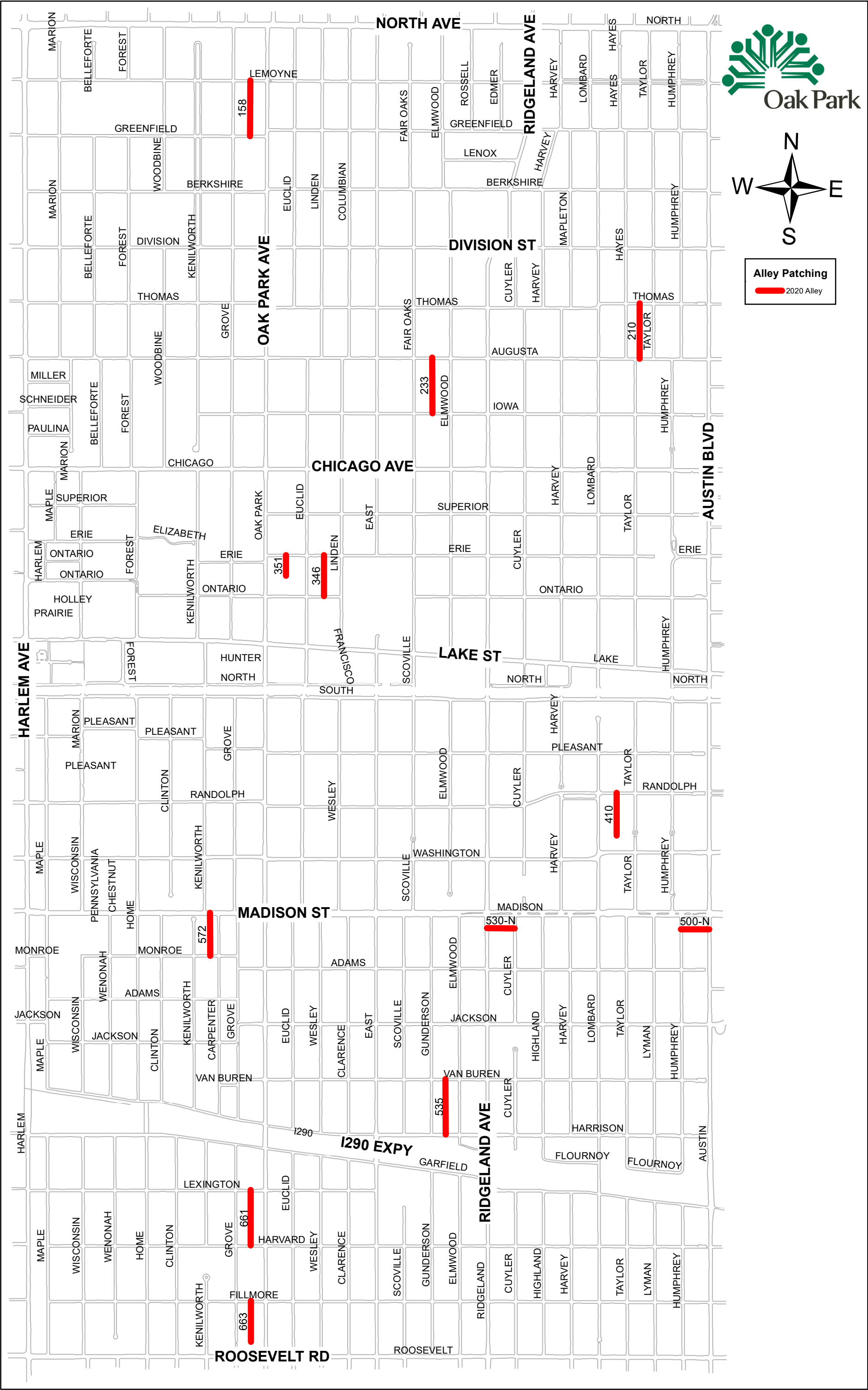


2020 PAVEMENT PRESERVATION CIP 20-6

Surface Patching - Streets
Includes:
SURFACE PATCHING
CRACK FILLING

A	CLINTON AV	ROOSEVELT RD	to	FILLMORE ST
B	CLARENCE AV	HARRISON ST	to	VanBuren ST
C	ADAMS ST	GUNDERSON AV	to	RIDGELAND AV
D	ELMWOOD AV	MADISON ST	to	ADAMS ST
E	LOMBARD AV	MADISON ST	to	ADAMS ST
F	RANDOLPH ST	RIDGELAND AV	to	CUYLER AV
G	PLEASANT ST	EUCLID AV	to	OAK PARK AV
H	EUCLID AV	SOUTH BV	to	PLEASANT ST
I	IOWA ST	EAST AV	to	LINDEN AV
J	IOWA ST	RIDGELAND AV	to	ELMWOOD AV
K	IOWA ST	TAYLOR AV	to	LOMBARD AV
L	KENILWORTH AV	THOMAS ST	to	AUGUSTA ST
M	RIDGELAND AV	DIVISION ST	to	BERKSHIRE ST
N	BERKSHIRE ST	EAST AV	to	FAIR OAKS AV
P	GREENFIELD ST	FAIR OAKS AV	to	EAST AV
R	DIVISION	HARLEM	to	AUSTIN
S	AUSTIN BLVD	LAKE	to	ROOSEVELT
1	GROVE AV	ROOSEVELT RD	to	NORTH END
2	HARVARD ST	CLINTON AV	to	OAK PARK AV
3	WESLEY AV	FILLMORE ST	to	HARVARD ST
4	HARVARD ST	RIDGELAND AV	to	LOMBARD AV
5	GARFIELD ST	TAYLOR AV	to	AUSTIN BV
6	GROVE AV	GARFIELD ST	to	LEXINGTON ST
7				CANCELED
8	EUCLID AV	HARRISON ST	to	JACKSON BV
9	TAYLOR AV	HARRISON ST	to	JACKSON BV
10	ADAMS ST	CARPENTER AV	to	GROVE AV
11	HOME AV	MADISON ST	to	MONROE AV
12	SCOVILLE AV	MADISON ST	to	WASHINGTON BV
13	HUMPHREY AV	MADISON ST	to	RANDOLPH ST
14	TAYLOR AV	WASHINGTON BV	to	RANDOLPH ST
15	RANDOLPH ST	CUYLER AV	to	LOMBARD AV
16	PLEASANT ST	HUMPHREY AV	to	AUSTIN BV
17	MAPLE AV	PLEASANT ST	to	north end
18	RANDOLPH ST	KENILWORTH AV	to	OAK PARK AV
19	RANDOLPH ST	SCOVILLE AV	to	ELMWOOD AV
20				CANCELED
21				CANCELED
22	GROVE AV	ONTARIO ST	to	ERIE ST
23	AUGUSTA ST	OAK PARK AV	to	RIDGELAND AV
24				CANCELED
25	THOMAS ST	HARLEM AV	to	KENILWORTH AV
26	BERKSHIRE ST	FOREST AV	to	GROVE AV
27	HARVEY AV	THOMAS ST	to	GREENFIELD ST
28	LOMBARD AV	DIVISION ST	to	NORTH AV
29				CANCELED
30	EDMER AV	GREENFIELD ST	to	CDS N/LEMOYNE
31	FAIR OAKS AV	GREENFIELD ST	to	CDS N/LEMOYNE

NOTES:
- NOT ALL BLOCKS 1 - 31
NEED SURFACE PATCHING
- NOT ALL BLOCKS OF DIVISION
AND AUSTIN NEED PATCHING



Alley Patching

2020 Alley